

## Registers Update - IT Requirements for ARTL

REGISTERS OF SCOTLAND  
Executive Agency  
Information about Scotland's land & property



This Registers Update is based on an article that appeared in the January 2006 edition of The Journal of The Law Society of Scotland.

UPDATE: 16.1

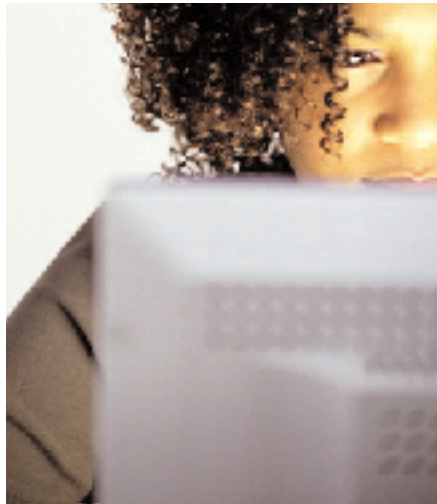
Automated Registration of Title to Land (ARTL) is planned to be introduced on a pilot basis in the autumn of 2006 before being rolled out across the country from spring 2007. Registers Update 16 provided a general introduction to ARTL, while this update describes the technical specification for operating the system.

Further updates will follow as we move nearer to the implementation of the live system. You can also keep up to date with the most recent developments by visiting our website [www.ros.gov.uk/artl](http://www.ros.gov.uk/artl) or by contacting our Key Stakeholder Representatives: Tom Drysdale at [tom.drysdale@ros.gov.uk](mailto:tom.drysdale@ros.gov.uk) and David Preston at [david.preston@ros.gov.uk](mailto:david.preston@ros.gov.uk).

The technology needed to support automated registration of title is straightforward provided intending users have an up to date computer operating system.

Users' IT systems will need to meet certain minimum requirements in order for them to use ARTL. These are in respect of:

- hardware
- operating system
- browser software
- software required for digital signatures
- card management and
- connection to the internet



### Hardware

ARTL will not itself have significant requirements for local disk space on the user's computer and any computer which has the capacity to run the software referred to below should be suitable for use with ARTL.

### Operating System

It is recommended that, for users who have a Windows platform, Windows XP Professional or Home Edition is chosen as the operating system. As Windows 98 and Windows NT will no longer be supported by Microsoft after 30 June 2006, their use for connection to ARTL is not recommended.

An alternative to Windows is a Unix based open source operating system such as Linux. It is our intention to support the use of such systems for ARTL, and intending ARTL users who have them should contact us at the address stated at the end of this update as soon as possible to discuss their requirements in more detail.

It is also likely that a number of potential ARTL users have Apple Mac computers and we will support their use for ARTL. The Mac OS Version X operating system is roughly equivalent to Windows XP and it is anticipated that this will support all the requirements of ARTL.

For all operating systems, it is recommended that the patch level installed is kept up to date as per vendor recommendations in order to ensure that an appropriate level of security is maintained.

### Browser Software

The ARTL system is internet based and is made available to users within an internet browser. This will require users to have a compatible browser installed on their computer.



