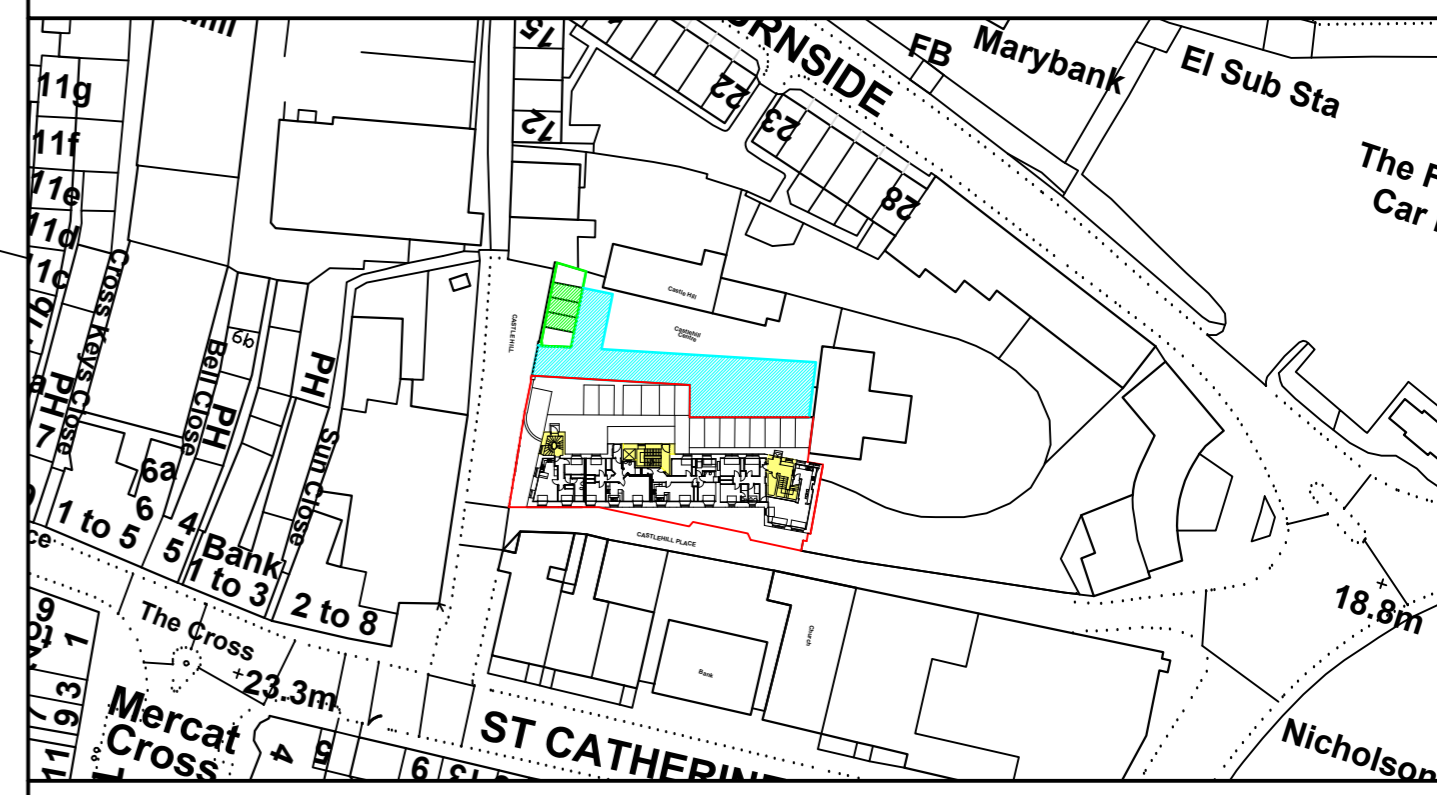
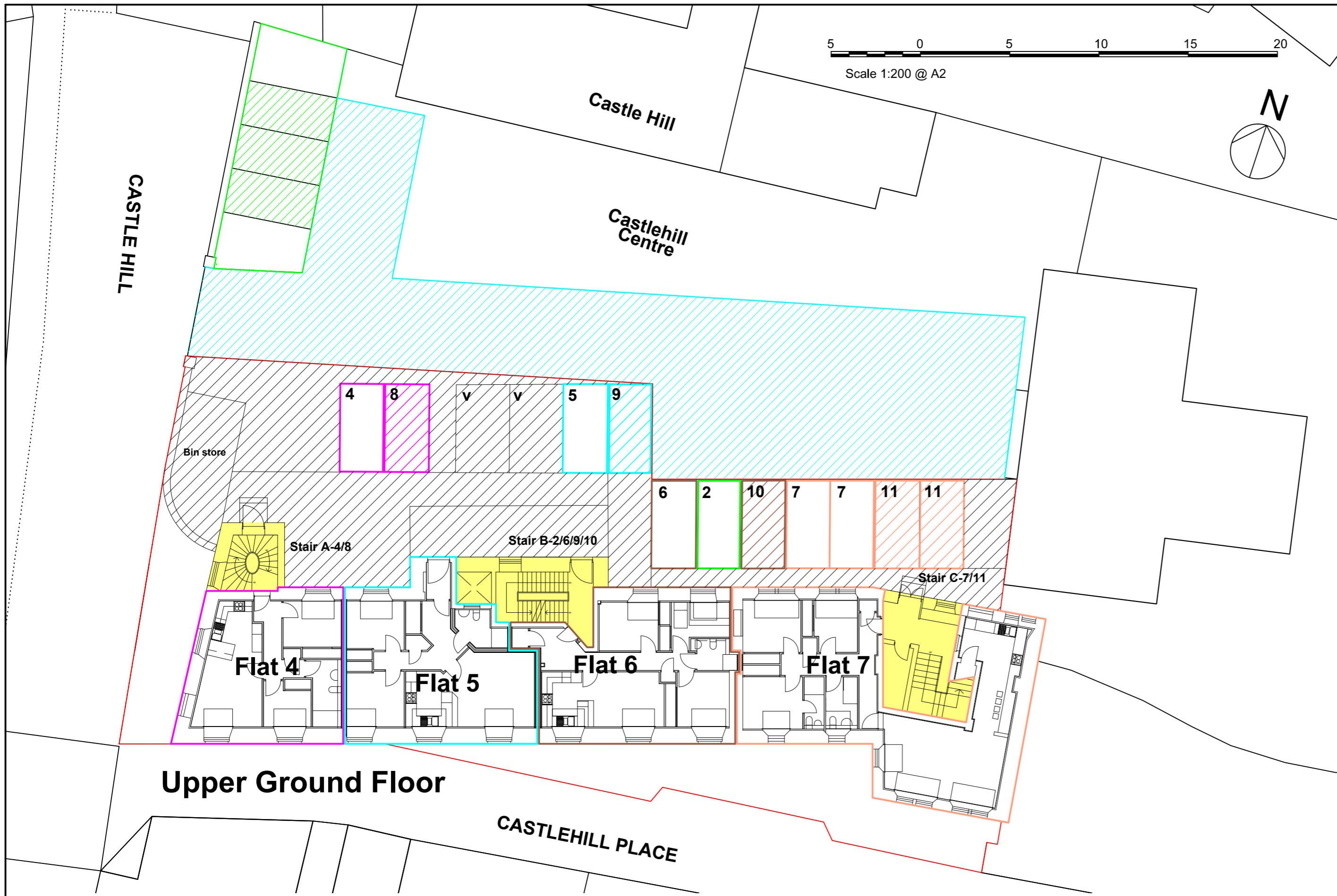


Development Plan Scale 1:200 @ A2

Scale 1:200 @ A2

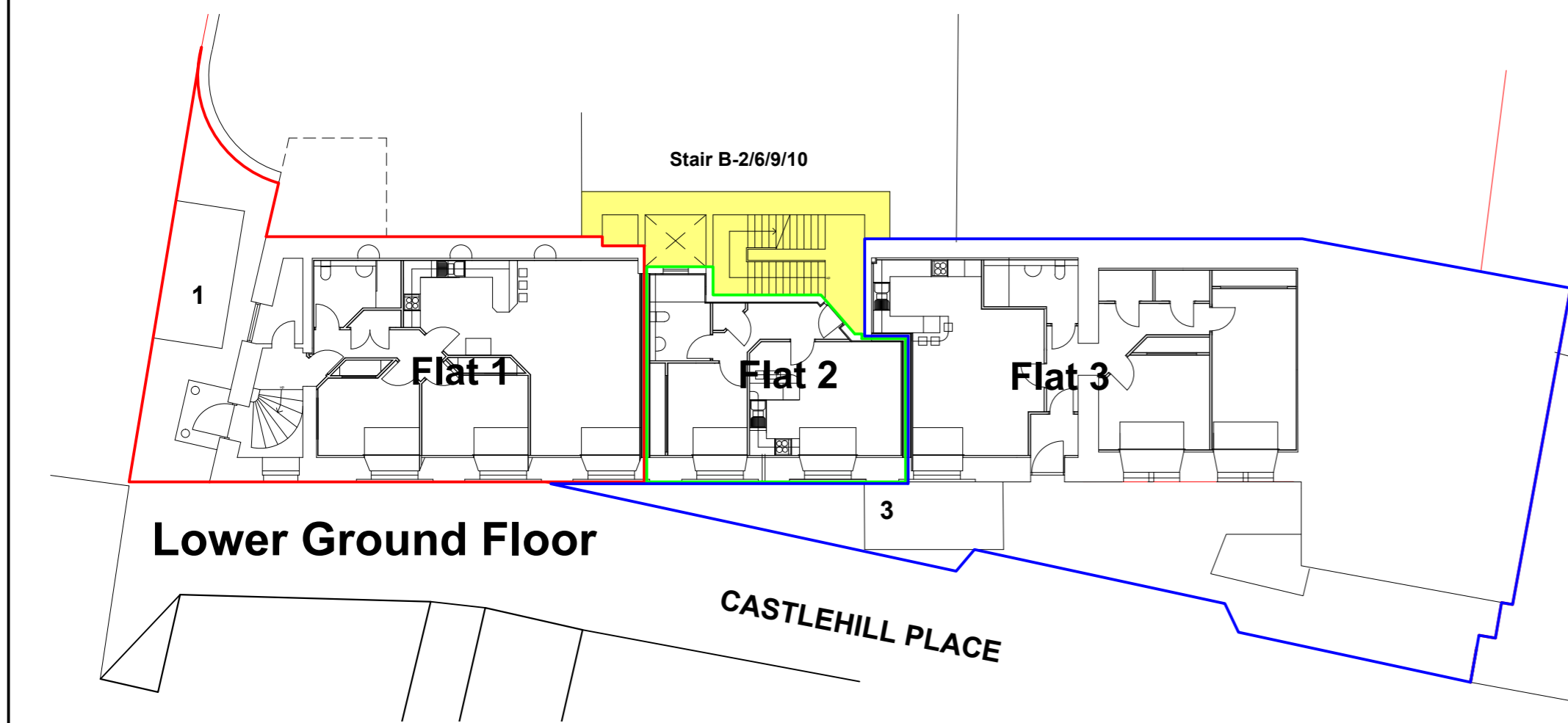


Location Plan 1:1250

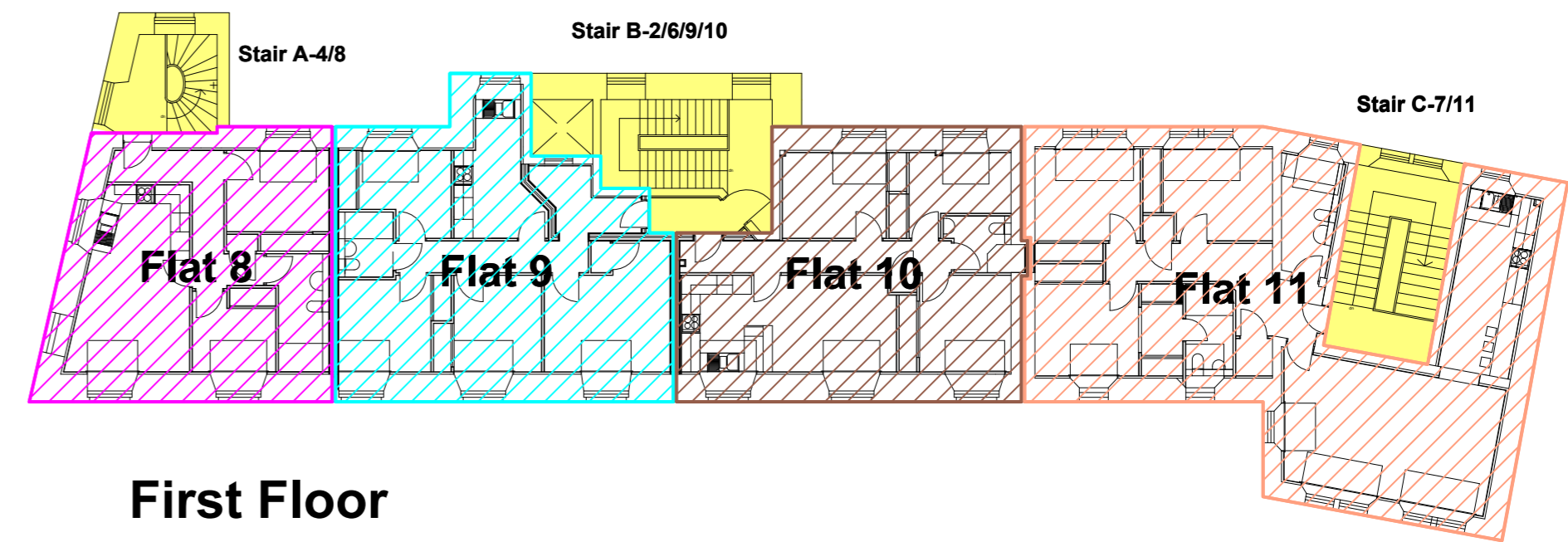
Subjects at Castlehill Cupar KY15 4HA

- Site access hatched in blue
- Common external areas including bin store and visitors parking spaces hatched in black
- Shared parking spaces hatched in green.
- Stair A (Flats 4,8) common stairwell hatched yellow
- Stair B (Flats 2,6,9,10) common stairwell hatched yellow
- Stair C (Flats 7,11) common stairwell hatched yellow
- Lower Ground Floor
- Flat 1 and parking place...outlined in red
- Flat 2 and parking place...outlined in green
- Flat 3 and parking place...outlined in blue
- Upper Ground Floor
- Flat 4 and parking place...outlined in magenta
- Flat 5 and parking place...outlined in cyan
- Flat 6 and parking place...outlined in dark brown
- Flat 7 and parking places...outlined in light brown
- First Floor
- Flat 8 and parking place...outlined and hatched in magenta
- Flat 9 and parking place...outlined and hatched in cyan
- Flat 10 and parking place...outlined and hatched in dark brown
- Flat 11 and parking places...outlined and hatched in light brown

Upper Ground Floor



Lower Ground Floor



First Floor

The Development registered under title FFE108062 and plots 1 to 11 within have been DPA approved by:
 Craig McFadden - 18 February 2016
 Craig McFadden (DPA Officer)