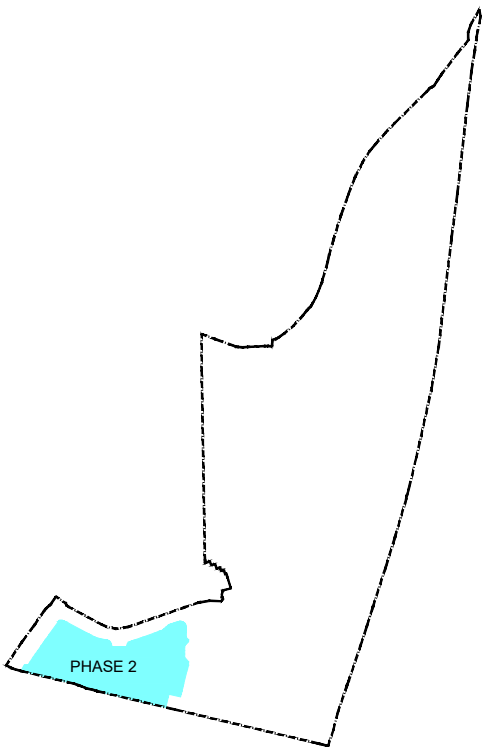


- CYAN - DENOTES DEVELOPMENT BOUNDARY
- RED - DENOTES PLOT BOUNDARY
- LIGHT GREEN - OPEN SPACE (COMMUNALLY OWNED) AND MAINTAINED BY FACTOR
- BLUE - DENOTES PRIVATE ROADS (COMMUNALLY OWNED) MAINTAINED BY FACTOR
- PEACH - DENOTES FOOTPATHS (COMMUNALLY OWNED) MAINTAINED BY FACTOR
- ORANGE - COMMUNAL STAIRWELL MAINTAINED BY FACTOR
- YELLOW - BIN STORE (COMMUNALLY OWNED BY BLOCK 1) MAINTAINED BY FACTOR
- PURPLE - BIN STORE (COMMUNALLY OWNED BY BLOCK 2) MAINTAINED BY FACTOR

NOTES

DO NOT SCALE DRAWINGS

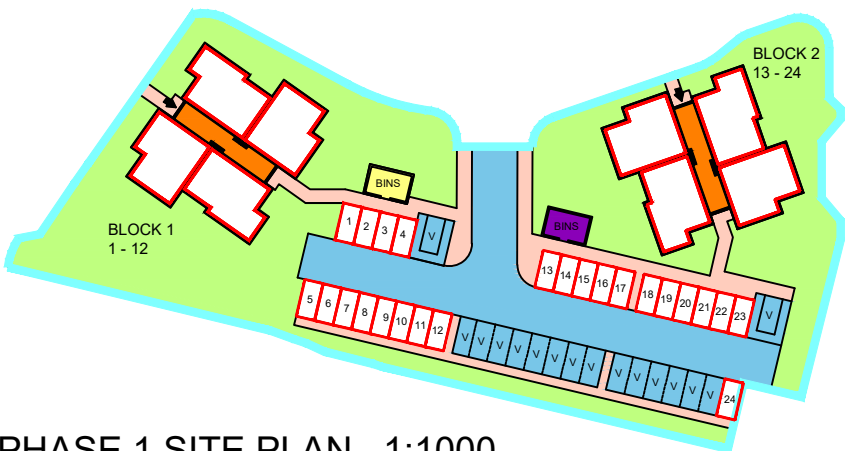


OVERALL SITE PLAN 1:5000

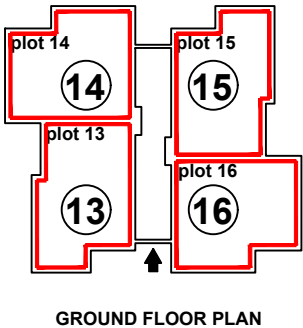
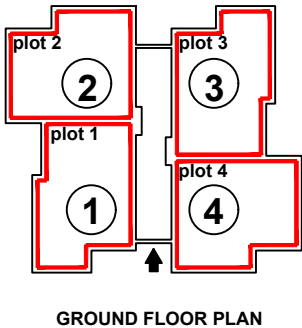
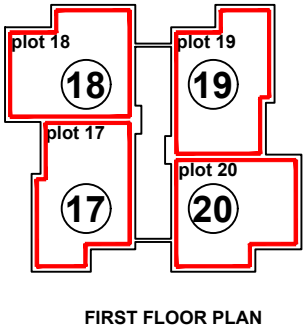
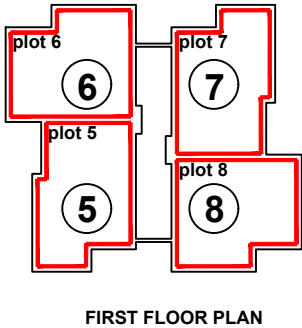
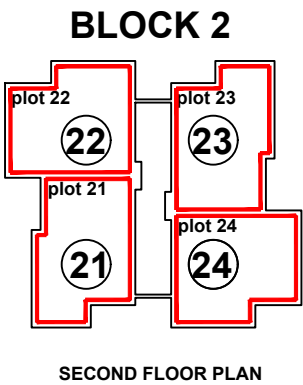
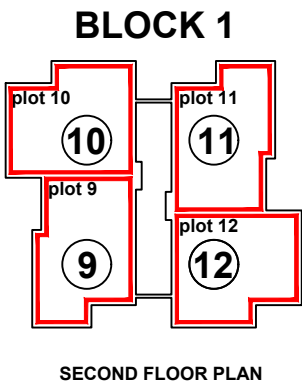
The development registered under title AYR108070 and plots 1 to 24 within have been DPA approved by:

S Pardue - 5th June 2019

Stuart Pardue (DPA Officer)



PHASE 1 SITE PLAN 1:1000



PLOT PLAN NTS

ogilvie

HOMES

Ogilvie Homes Ltd, Ogilvie House,
Pirnhall Business Park,
Stirling, FK7 8ES
Tel: 01786 811811 Fax: 01786 816935

PROJECT

ANNICK ROAD,
IRVINE

DRAWING

MASTER DEED PLAN
PHASE 2

SCALE

1:1500, 1:5000@A3

DATE

05/19

DRAWN BY

GR

JOB No.

0107

DRAWING No.

MDOC-02

REV.

-