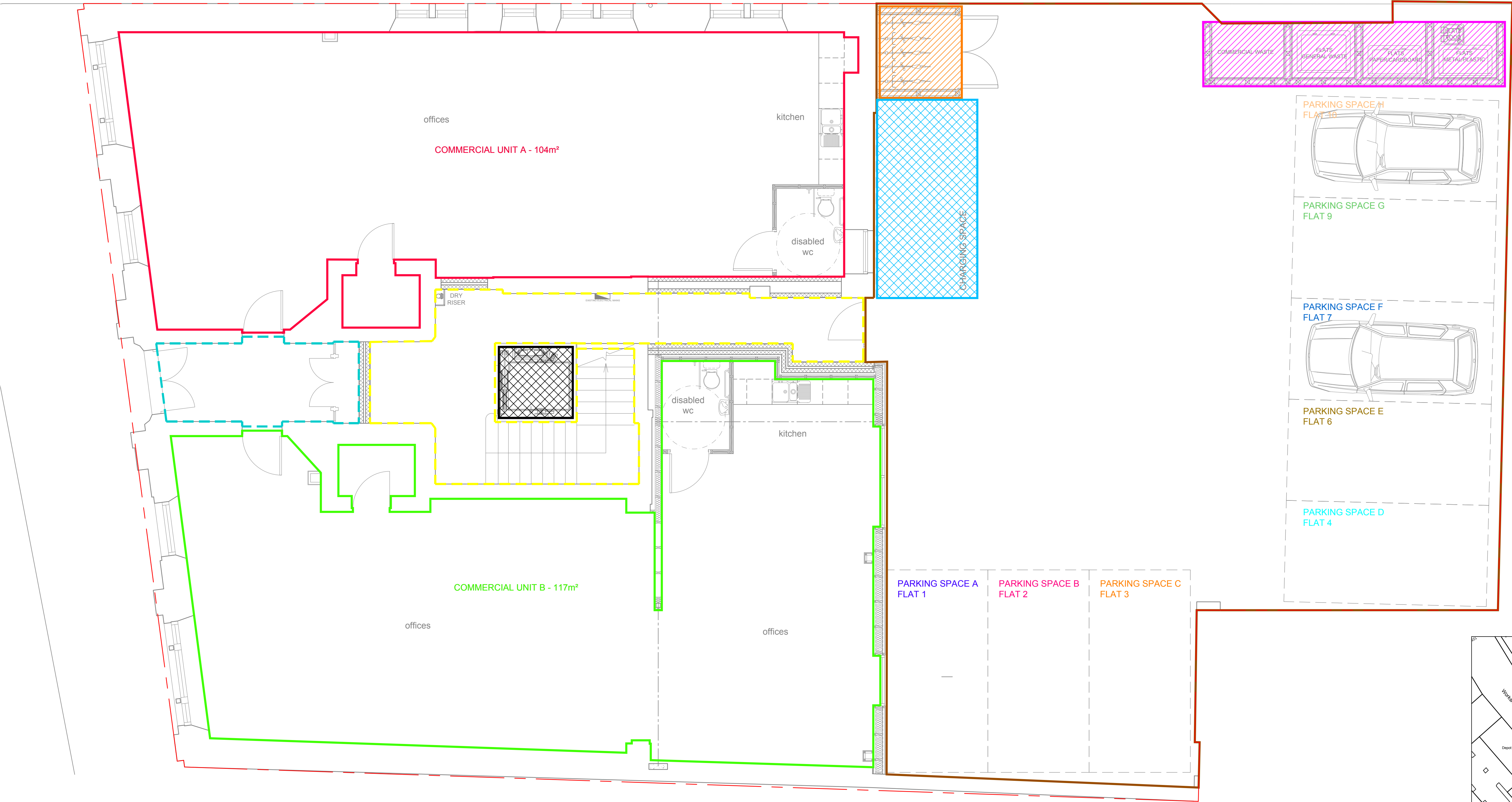


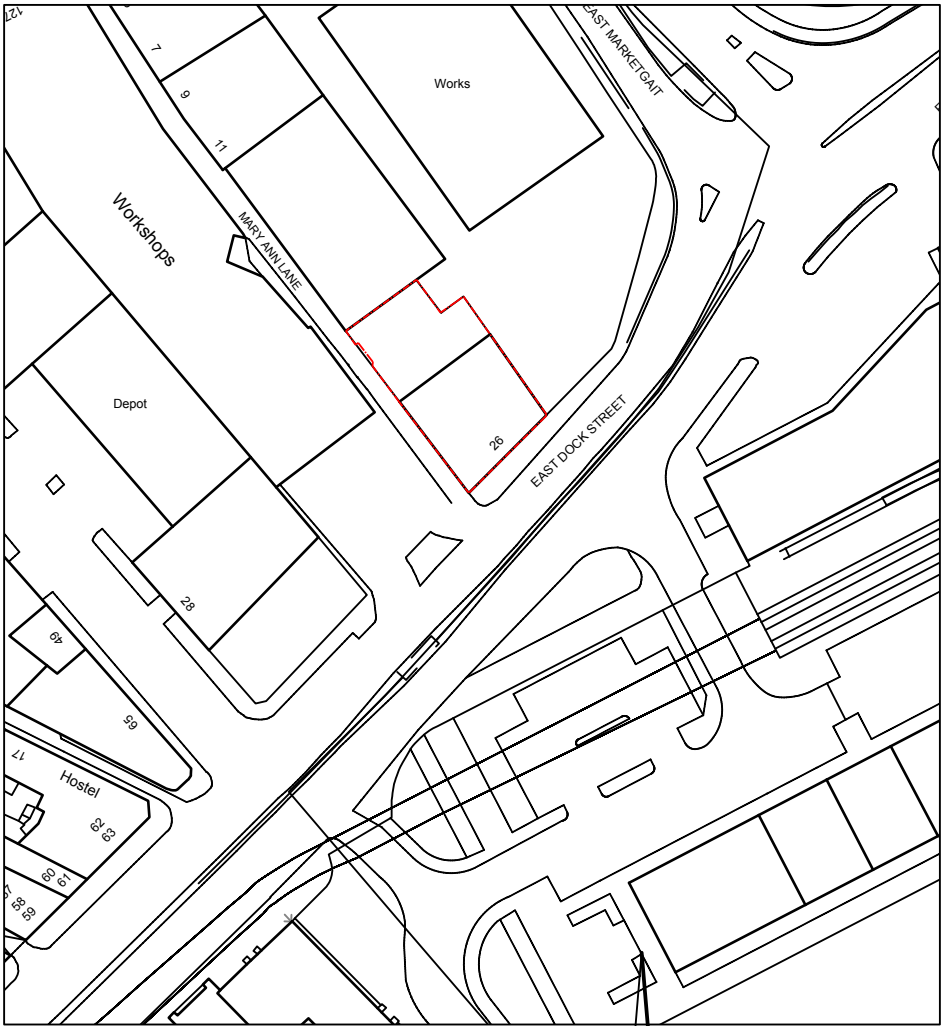
PLAN 1

- EXTERNAL RESIDENTIAL ACCESS
- MARITIME APARTMENTS ENTRANCE AREA
- OFFICE PREMISES ENTRANCE AREA
- OFFICE A MARITIME HOUSE
- OFFICE B MARITIME HOUSE
- BICYCLE STORE
- BIN STORE
- MARITIME HOUSE APARTMENTS
PASSENGER LIFT
- ELECTRIC CAR CHARGING POINT



The Development registered under title ANG65245 and plots 1 to 10 including the commercial units A and B within have been DPA approved by:

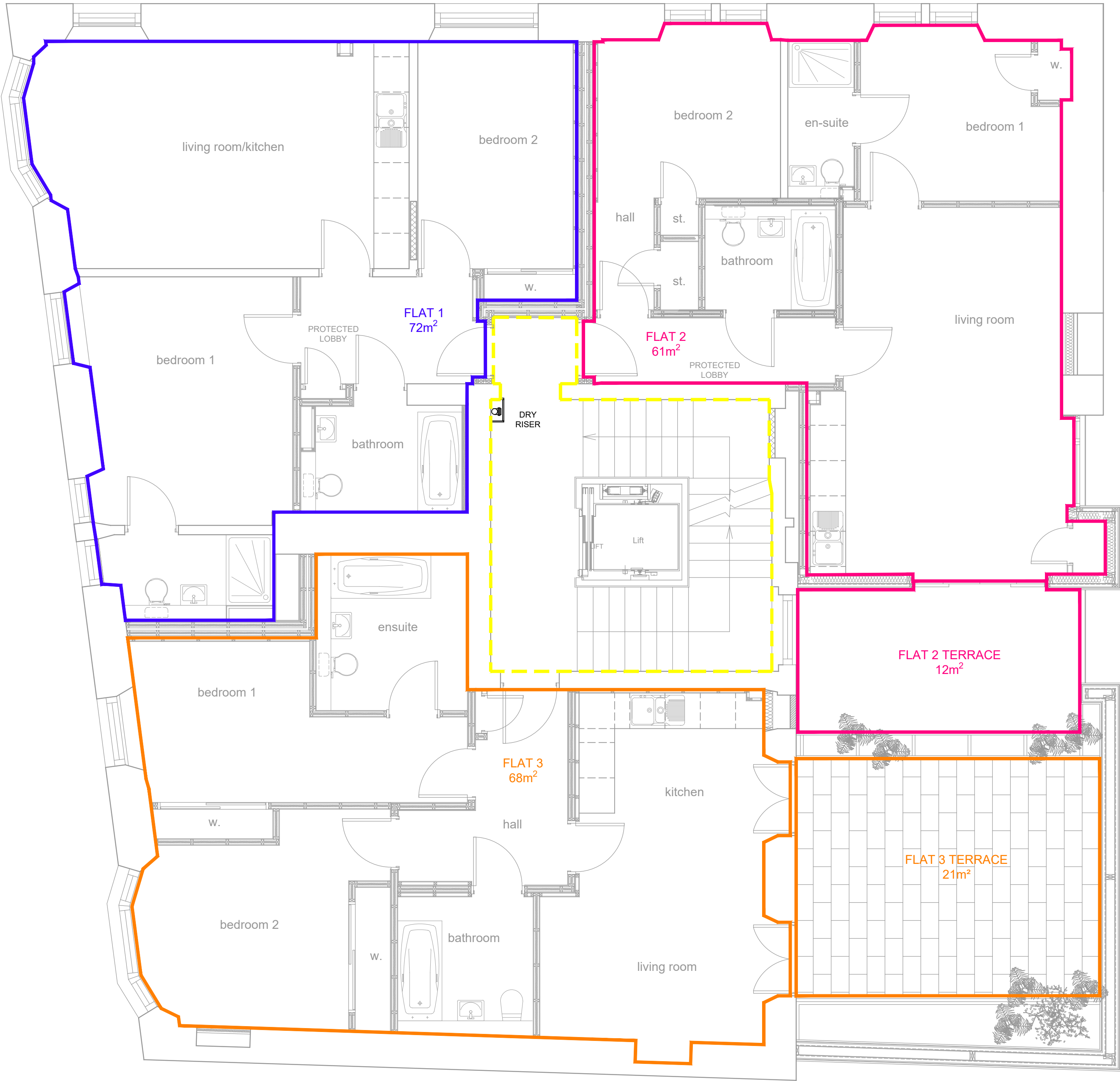
Craig McFadden – 18 September 2019
Craig McFadden (DPA Officer)



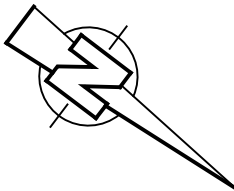
location plan @ 1:1250

Rev		Date	Description
A	29.08.19	Site Boundary amended	
project		client	drawing
Maritime Developments Ltd		Maritime Developments Ltd	Ground Floor Plan
11 Victoria Street			DEED OF CONDITIONS
26 East Dock Street			
Dundee			
DD1 3EY			
scale		date	drg no. rev.
1:50 @ A1		July 2018	DC-01 A

PLAN 2



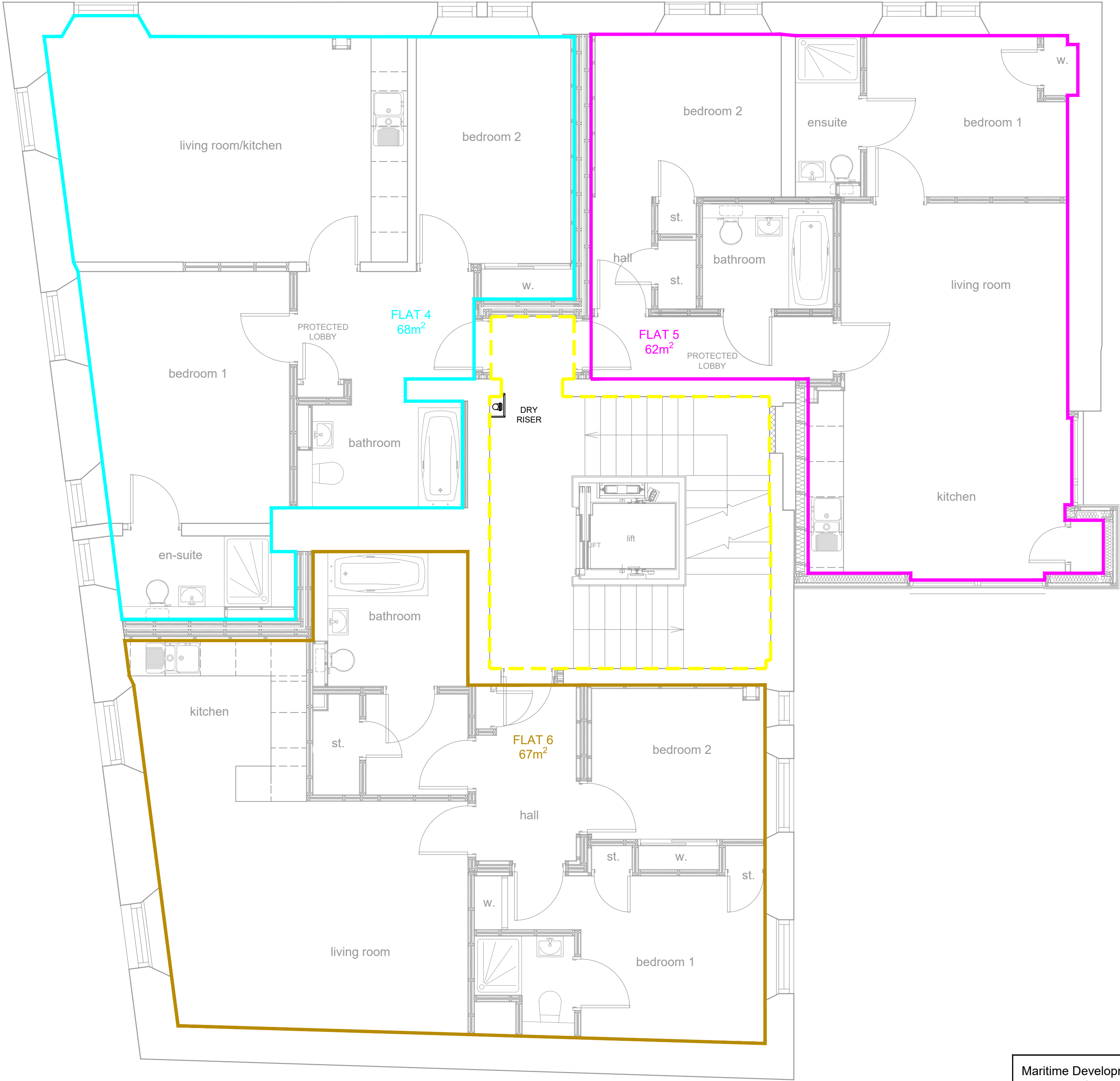
- EXTERNAL RESIDENTIAL ACCESS
- MARITIME APARTMENTS ENTRANCE AREA
- FLAT 1
- FLAT 2
- FLAT 3



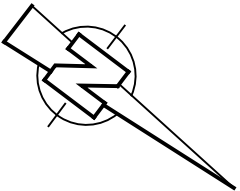
First Floor Plan 1:50

Maritime Developments Ltd 11 Victoria Street Newport-on-Tay Fife DD6 8DJ	project Conversion of DP & L Building 26 East Dock Street Dundee DD1 3EY	client Maritime Developments Ltd	drawing First Floor plan DEED OF CONDITIONS	
	scale 1:50 @ A2	date July 2018	drg no. DC-02	rev. -

PLAN 3



- EXTERNAL RESIDENTIAL ACCESS
- MARITIME APARTMENTS ENTRANCE AREA
- FLAT 4
- FLAT 5
- FLAT 6



Second Floor Plan 1:50

Maritime Developments Ltd 11 Victoria Street Newport-on-Tay Fife DD6 8DJ	project Conversion of DP & L Building 26 East Dock Street Dundee DD1 3EY	client Maritime Developments Ltd	drawing Second Floor Plan DEED OF CONDITIONS	
	scale	date	drg no.	rev.
	1:50	July 2018	DC-03	-

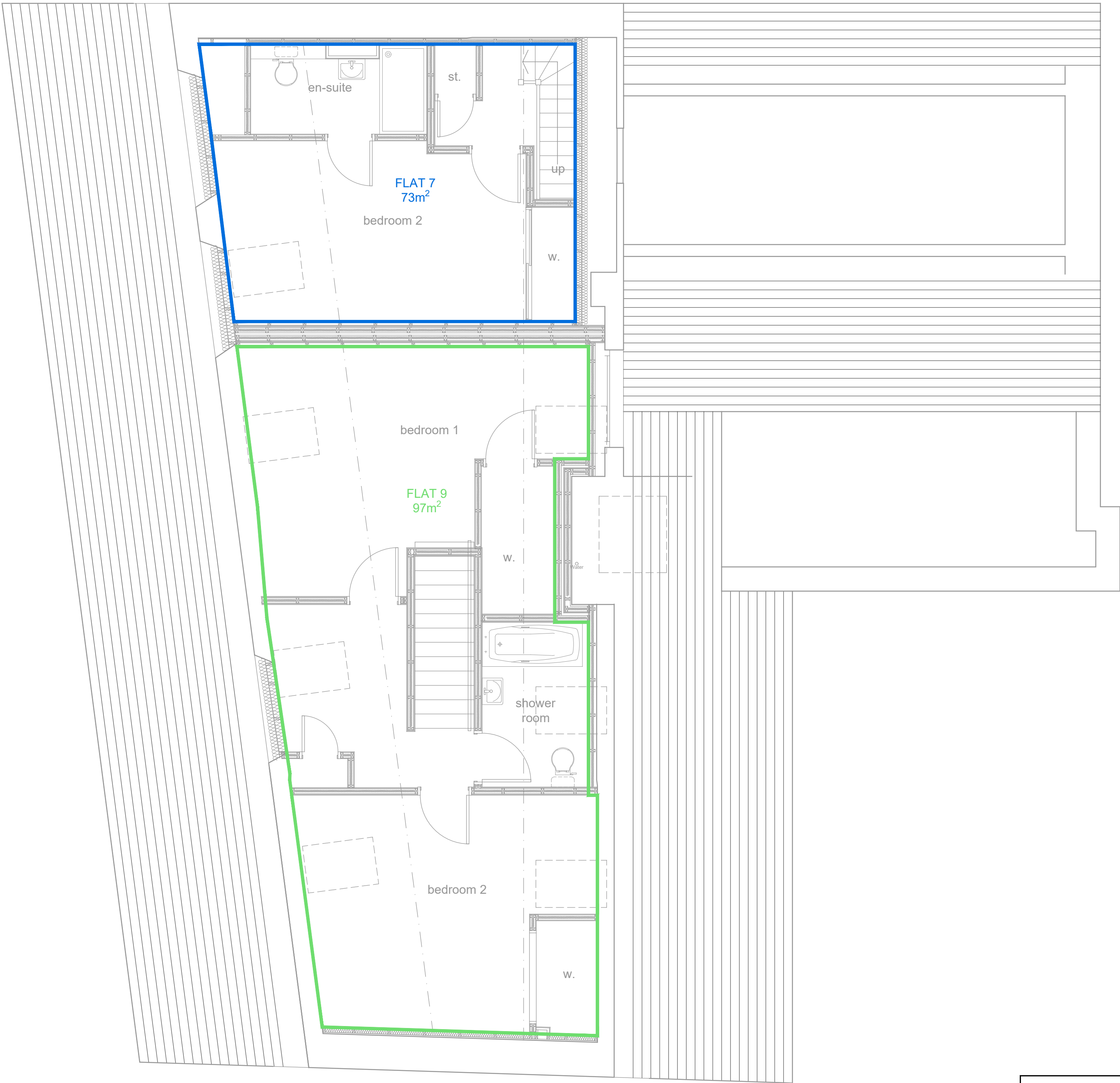
PLAN 4



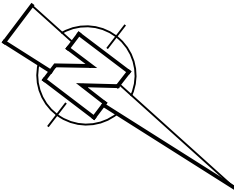
Third Floor Plan 1:50

Maritime Developments Ltd 11 Victoria Street Newport-on-Tay Fife DD6 8DJ	project Conversion of DP & L Building 26 East Dock Street Dundee DD1 3EY	client Maritime Developments Ltd	drawing Third Floor plan DEED OF CONDITIONS	
	scale 1:50	date July 2018	drg no. DC-04	rev. -

PLAN 5



- EXTERNAL RESIDENTIAL ACCESS
- MARITIME APARTMENTS ENTRANCE AREA
- FLAT 7
- FLAT 8
- FLAT 9
- FLAT 10



Fourth Floor Plan 1:50

Maritime Developments Ltd 11 Victoria Street Newport-on-Tay Fife DD6 8DJ	project Conversion of DP & L Building 26 East Dock Street Dundee DD1 3EY	client Maritime Developments Ltd	drawing Fourth Floor plan DEED OF CONDITIONS	
	scale 1:50 @ A2	date July 2018	drg no. DC-05	rev. -