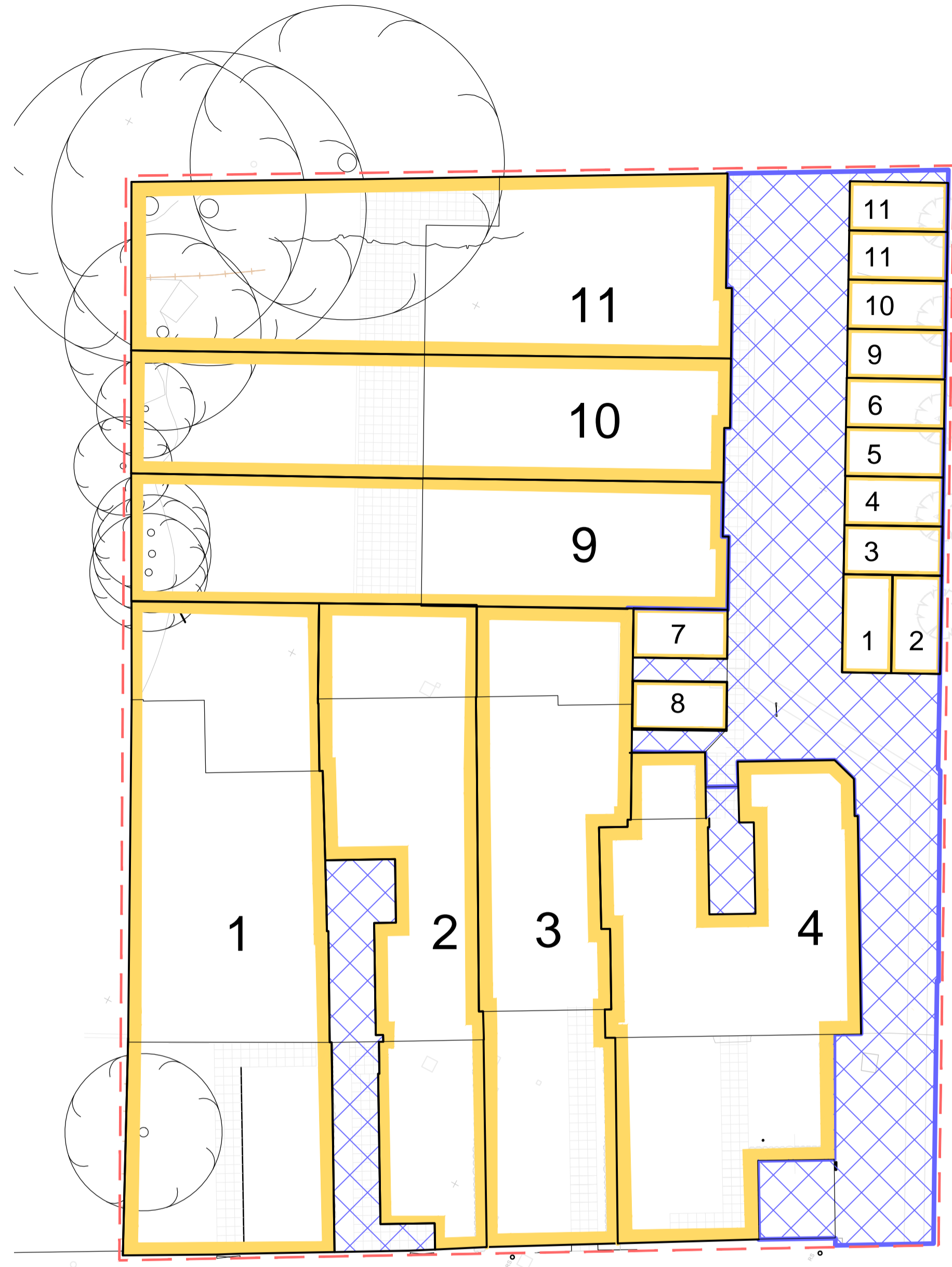


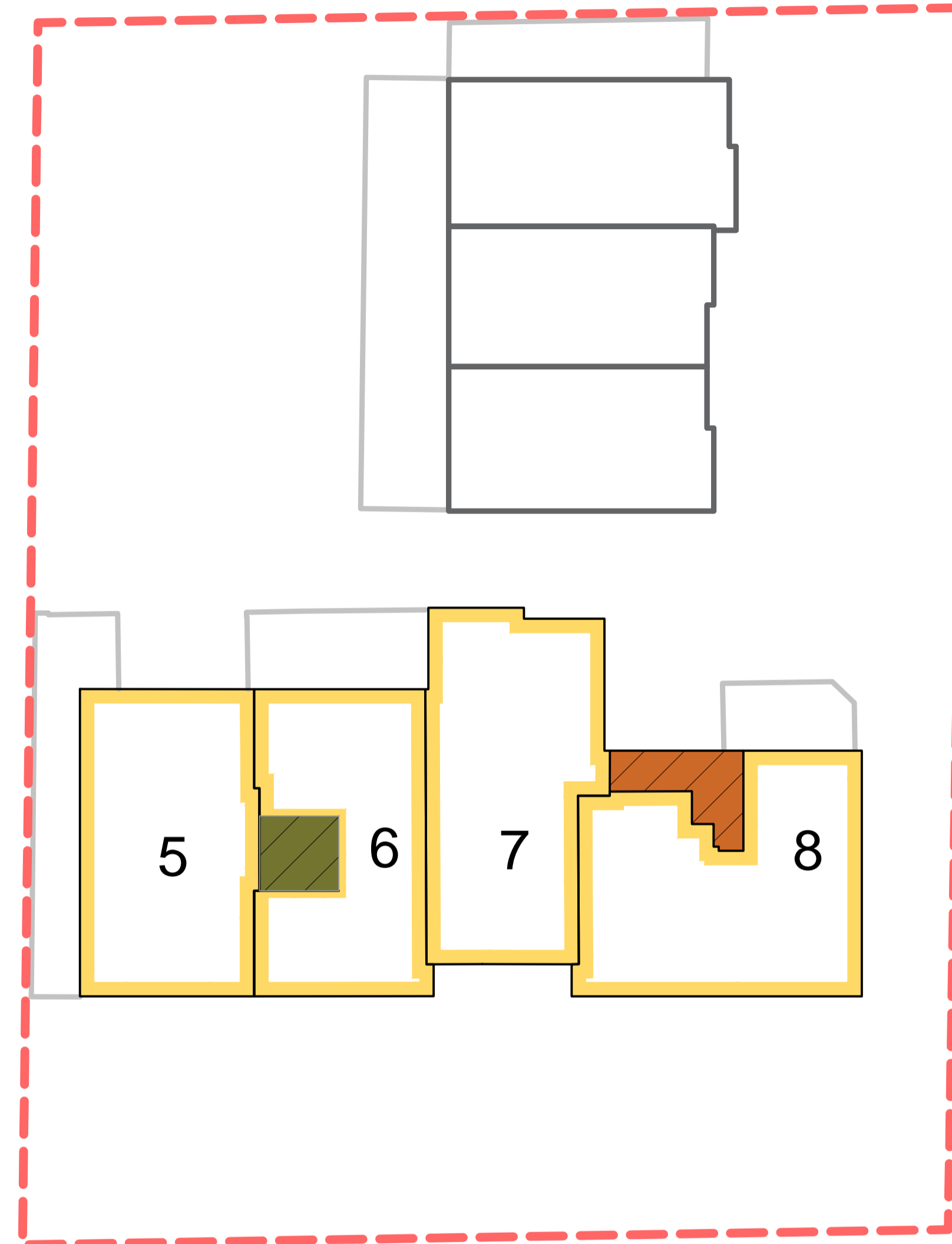
NOTE:  
All proprietary goods and materials are to be fitted in accordance with manufacturer's instructions, Codes of Practice and British Standards. All dimensions to be verified by the Contractor on site. Do not scale drawings, work to figured dimensions only.

© This drawing remains the Copyright of Fouin+Bell Architects Ltd. and may not be reproduced in whole or in any part without prior written permission.

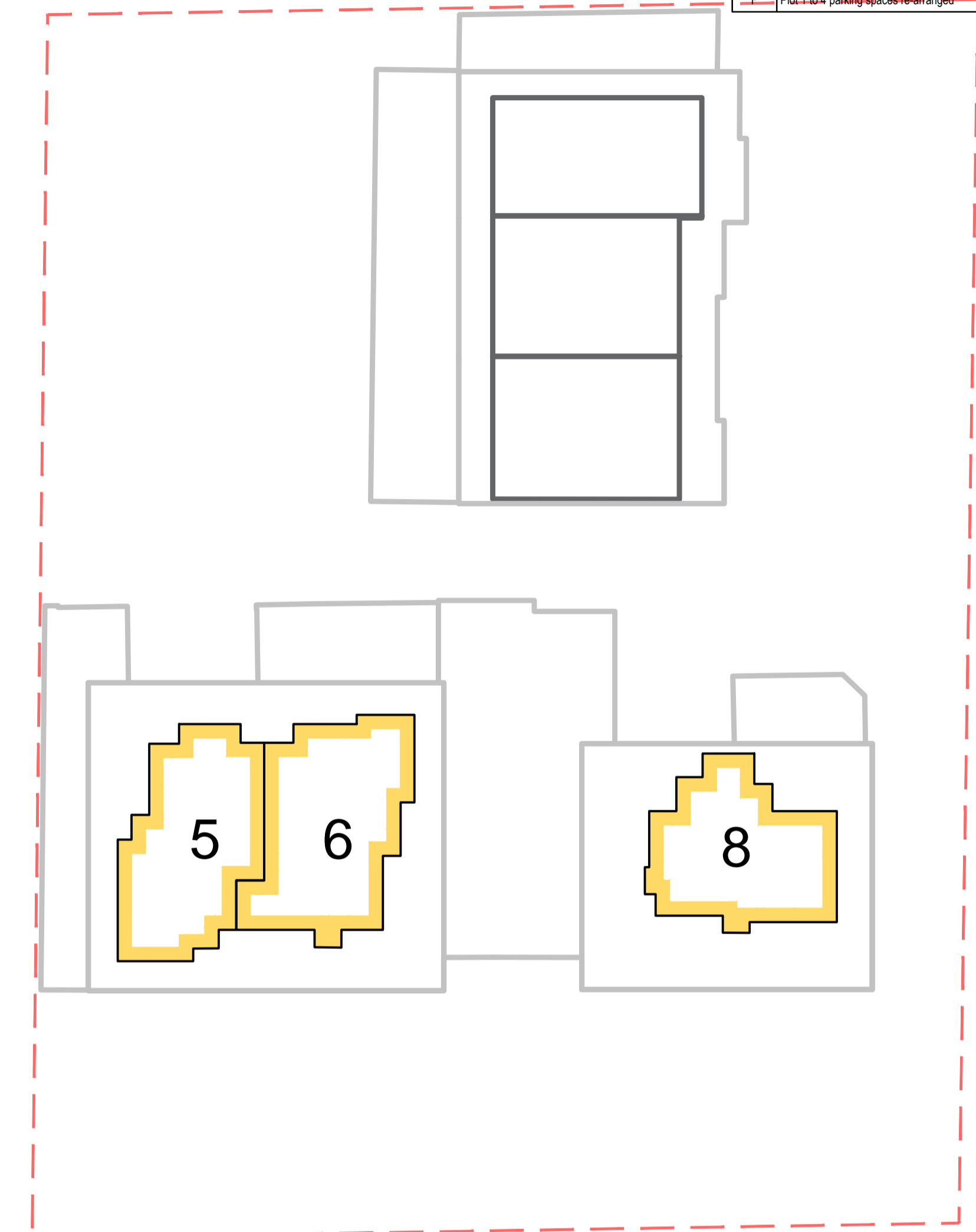
REVISION / DESCRIPTION / DATE	
A Alterations to layout, boundary extents and omission of Basement plan and Townhouses upper floors	18.01.18
B Parking spaces added with hatches, North Point added.	30.01.18
C Car parking adjusted and hatches removed for clarity	5.2.18
D Parking altered. Space behind bin store disposed to plot 4	26.02.18
E First floor landings only go to relevant flats. Hatches updated	27.02.18
F Plot 1 to 4 parking spaces re-arranged	05.03.18



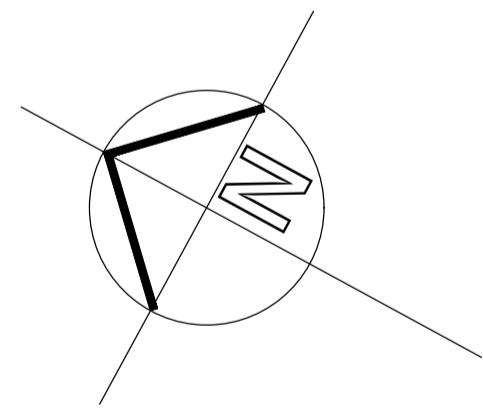
Site Plan - Ground Floor Plan



First Floor Plan

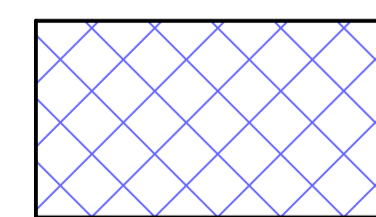


Second Floor Plan



The Development registered under title MID84138 and plots 1 to 11 within have been DPA approved by:  
*Craig McFadden - 5 March 2018*  
Craig McFadden ( DPA Officer)

LEGEND



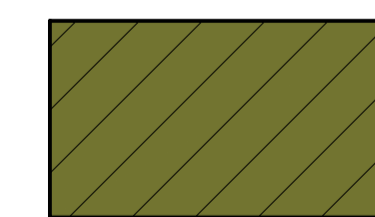
Communal Area Managed by Site Factor



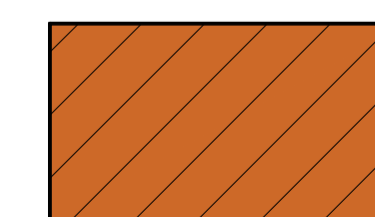
Plot Boundary



Site Boundary



Plot 5 & 6 Stair Managed by Site Factor



Plot 7 & 8 Stair Managed by Site Factor

fouin + bell



architects

1 John's Place Edinburgh EH6 7EL  
T: 0131 478 7100 F: 0131 478 7111  
mail@fouin-bell.com www.fouin-bell.com

CLIENT

MINTO STREET PROPERTIES LLP

PROJECT

RESIDENTIAL DEVELOPMENT  
16 TO 18 MINTO STREET  
EDINBURGH

SCALE @A1

1:200@A1 DATE 17.01.18

DRAWN BY JF CHECKED PHC STAGE

DRAWING: PLANS - DPA

PROJECT NUMBER DRAWING NUMBER REVISION

15-501 DPA-01 F