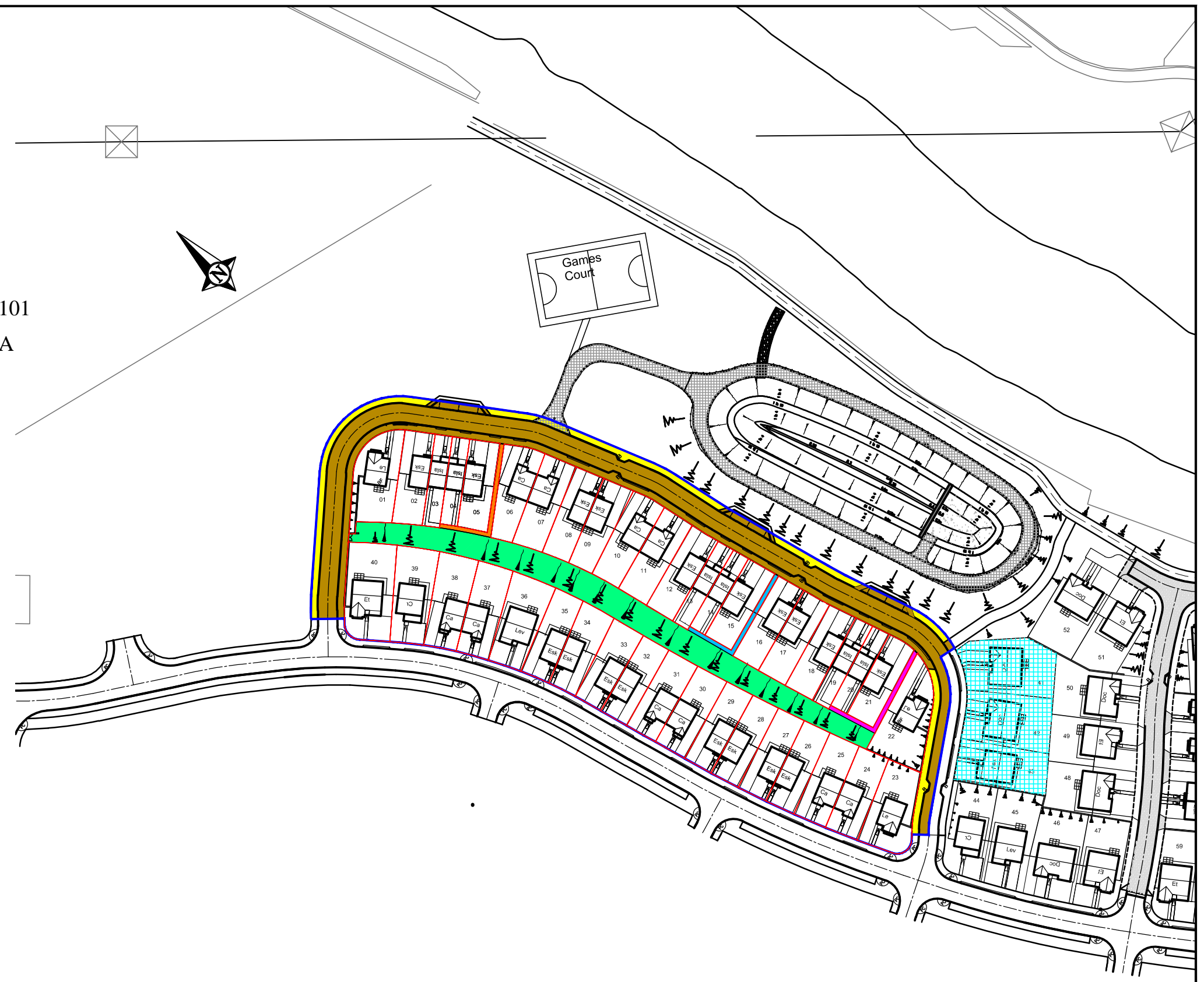


- Legend:**
- - Extent of Deed of Conditions.
 - - Plot Boundaries.
 - - Open Ground (Sharing Plot - All).
 - - Road (Sharing Plot - All).
 - - Service Strips (Sharing Plot - All).
 - - Path (Sharing Plot - Between Units 03 & 04 only).
 - - Path (Sharing Plot - Between Units 13 & 14 only).
 - - Path (Sharing Plot - Between Units 19 & 20 only).
 - Benefitted Proprietor of Servitude over Road Coloured Brown.

The Development registered under Title LAN229101 and Plots 1 to 40 (inclusive) within have been DPA approved by:
I MacLaren - 20th November 2017
 Iain MacLaren (DPA Officer)



T. LAWRIE & PARTNERS
 CONSULTING ENGINEERS
 T.Lawrie & Partners Limited.
 Erskine House, 1 North Avenue
 Clydebank Business Park, Clydebank G81 2DR
 Tel: 0141 952 5700 Fax: 0141 952 3666
 E-mail: admin@tlawrie.com

DAWN
 HOMES LIMITED
 220 West George Street Glasgow G2 2PG
 Tel. 0141-285-6700, Fax. 0141-285-6767
 e-mail: homes@dawn-group.co.uk

REV	DESCRIPTION	DRWN	CHKD	DATE
A	Revised to suit comments from Brodies.	KI	PK	20.11.2017

PROJECT TITLE
**Parcel 2
 Hoover Factory
 Cambuslang**

DRAWING TITLE
**Feu Plan
 Plots 1-40**

DRAWN BY PK	CHECKED BY PK	DATE 14.11.17
SCALE 1:1250		CREATED 14.11.17
DRAWING NUMBER 1885-4000		REVISION A
HARD DISK FILE REFERENCE F:\DWG\1885\1885-4000-1.dwg		