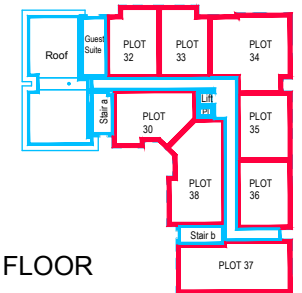
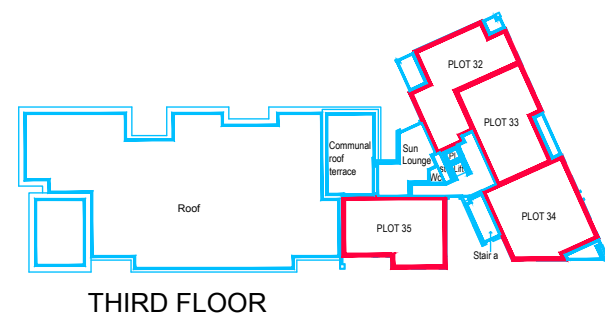


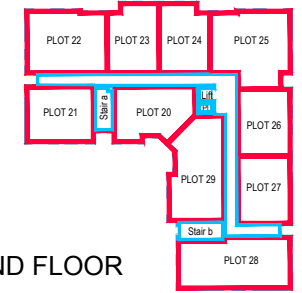
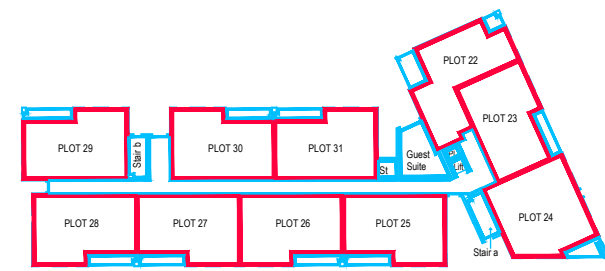
GREENWOOD GROVE EAST

GREENWOOD GROVE WEST



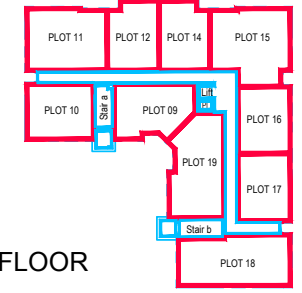
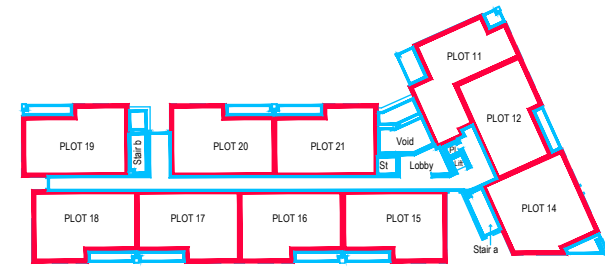
THIRD FLOOR

THIRD FLOOR



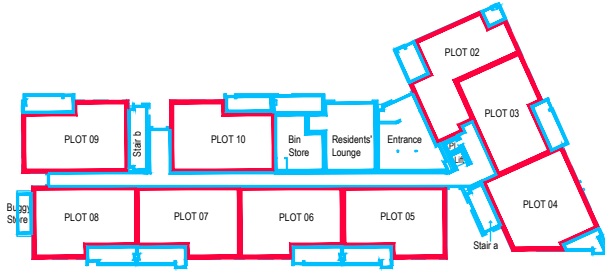
SECOND FLOOR

SECOND FLOOR



FIRST FLOOR

FIRST FLOOR



GROUND FLOOR

GROUND FLOOR

- LEGEND**
- Site Boundary
 - Common Parts Parking
 - Common Parts
 - Common Parts within the building

The Development registered under title REN135836 and plots 2 to 12, 14 to 35 of Greenwood Grove West and plots 2 to 12, 14 to 30 and 32 to 38 of Greenwood Grove East within have been DPA approved by:
Craig McFadden - 8 June 2016
 Craig McFadden (DPA Officer)



11000 Academy Park,
 Gower Street
 Pollokshields,
 Glasgow, G51 1PR
 Telephone: (0141) 420 8329
 Fax : (0141) 427 5774
 Scale 1:1000 @ A3

GREENWOOD GROVE, STEWARTON ROAD, NEWTON MEARNS - DEVELOPMENT PLAN APPROVAL