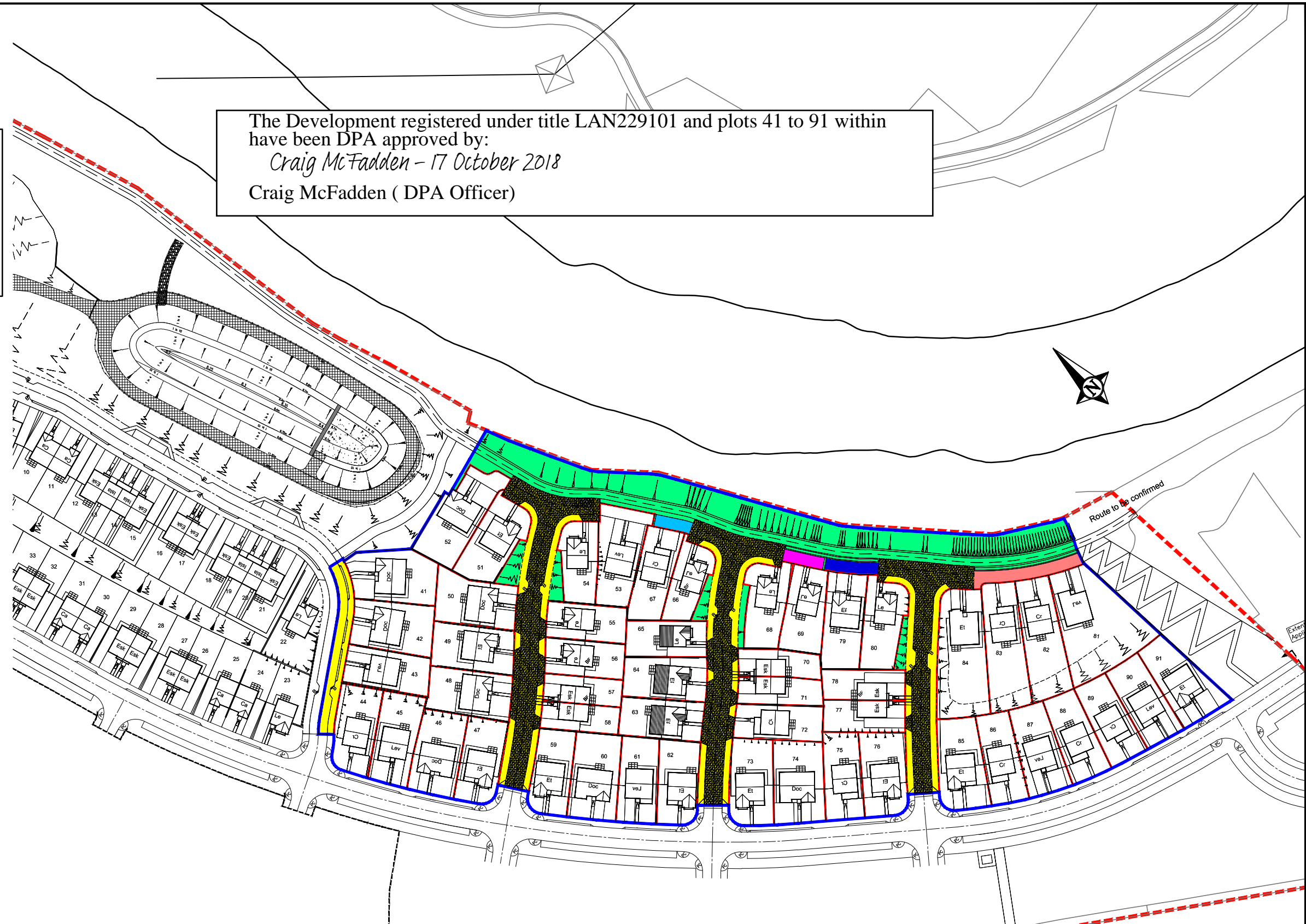


- Legend:**
- Extent of Deed of Conditions.
  - Plot Boundaries.
  - Open Ground (Sharing Plot - All).
  - Ph 2 Roadways (Sharing (Plot 41-91))
  - Driveway (Sharing Plot - Between Units 66 & 67 only).
  - Driveway (Sharing Plot - Between Units 68 & 69 only).
  - Driveway (Sharing Plot - Between Units 79 & 80 only).
  - Driveway (Sharing Plot - Between Units 81-84 only).

The Development registered under title LAN229101 and plots 41 to 91 within  
 have been DPA approved by:  
*Craig McFadden - 17 October 2018*  
 Craig McFadden ( DPA Officer)



**T. LAWRIE & PARTNERS**  
 CONSULTING ENGINEERS  
 T.Lawrie & Partners Limited.  
 Erskine House, 1 North Avenue  
 Clydebank Business Park, Clydebank G81 2DR  
 Tel: 0141 952 5700 Fax: 0141 952 3666  
 E-mail: admin@tlawrie.com

**DAWN**  
 HOMES LIMITED  
 220 West George Street Glasgow G2 2PG  
 Tel. 0141-285-6700, Fax. 0141-285-6767  
 e-mail: homes@dawn-group.co.uk

REV	DESCRIPTION	DRWN	CHKD	DATE
A	REVISED TO ACCORD WITH SOLICITORS COMMENTS.	P.K.	P.K.	28.08.18

PROJECT TITLE	Parcel 2 Hoover Factory Cambuslang
DRAWING TITLE	Feu Plan Plots 41-91

DRAWN BY PK	CHECKED BY PK	DATE 20.08.18
SCALE 1:1250	CREATED 20.08.18	
DRAWING NUMBER 1885-5000	REVISION A	
HARD DISK FILE REFERENCE F:\DWG\1885\1885-5000-1.dwg		