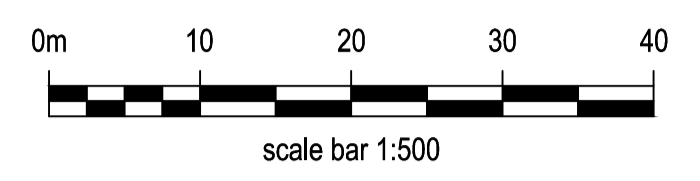


SITE 7 & 8, WESTERCRAIGS

The Development registered under title INV34336, Sites 7 & 8 and Plots 1 to 77 within have been DPA approved by:
Craig McFadden - 10 May 2023
 Craig McFadden (DPA Officer)



- KEY:
- Legal Development Boundary
 - Plot Feu House Boundary
 - Open Space / Landscape Areas
 - Existing storage pond
 - Adopted Road / Footpaths
 - Adopted Service Strip
 - Non-Adopted Road
 - Allocated Parking
 - Shared Parking
 - Shared Footway
 - Visitor Cycle Storage
 - Bin Collection Points
 - Sub-station Location
 - Apartments 1-15 Feu Boundary
 - Apartments 1-15 Bin Collection Points
 - Apartments 1-15 Residents Cycle Storage
 - Apartments 16-36 Feu Boundary
 - Apartments 16-36 Bin Collection Points
 - Apartments 16-36 Residents Cycle Storage
 - Apartments 55-77 Feu Boundary
 - Apartments 55-77 Bin Collection Points
 - Apartments 55-77 Residents Cycle Storage

No.	Revision	Date	By
I	Information revised to suit site layout	May 23	AM
H	Information revised to suit site layout	May 23	AM
G	Information revised to suit site layout	Mar 23	AM
F	Information revised to suit site layout	Jan 23	AM
E	Information revised to suit site layout	Jan 23	AM
D	Information revised to suit site layout	Nov 22	AM
C	Information revised to suit site layout	Nov 22	AM
B	Information revised to suit site layout	Oct 22	AM
A	Information revised to suit site layout	Sep 22	AM

ROBERTSON HOMES

Robertson House, Castle Business Park, Stirling FK9 4TZ
 Tel: 01786 431600 Fax: 01786 431650
 Email: info@robertson.co.uk
 www.robertsonhomes.co.uk

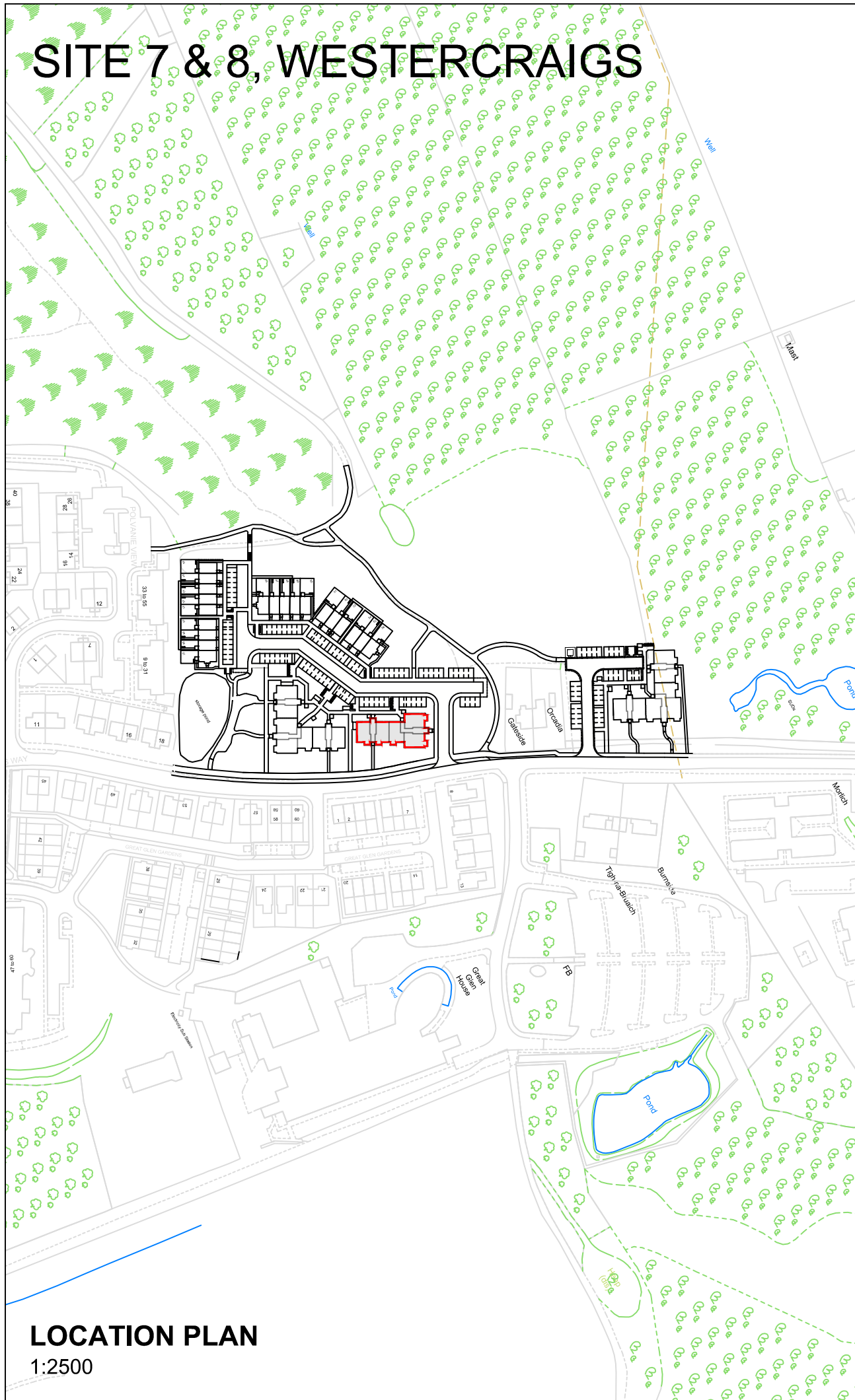
Project Title:
SITE 7 & 8 WESTERCRAIGS INVERNESS

Drawing Title:
DEED OF CONDITIONS

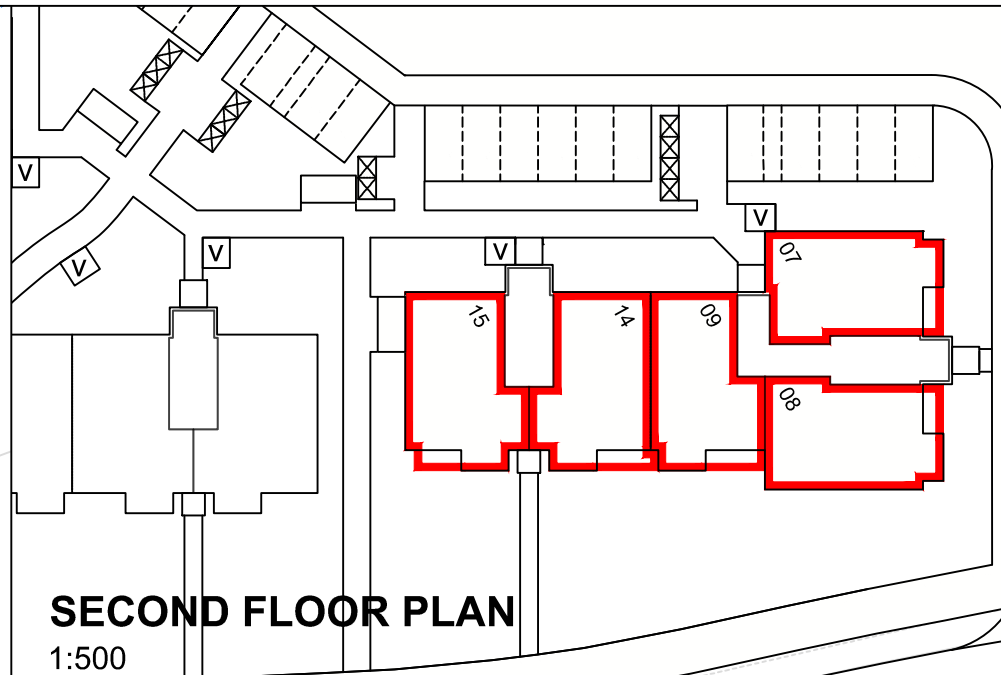
Scale at A1: 1:500	Date: AUG 2022
Drawn: AM	Checked: JM

Drawing No. 1107-8 - DOC-01	Rev: 1
---------------------------------------	------------------

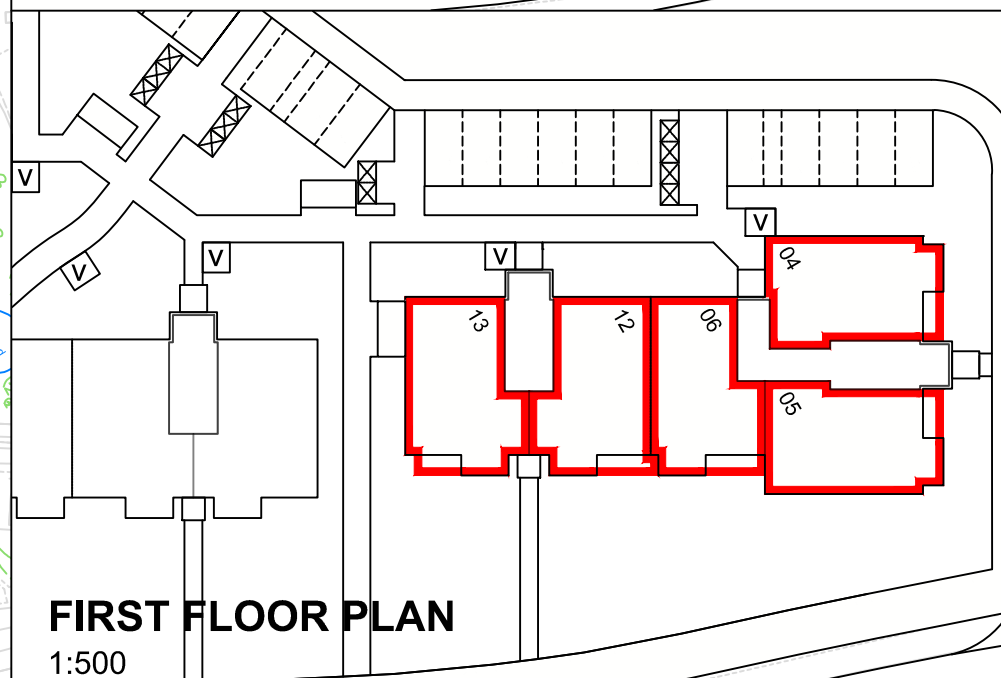
SITE 7 & 8 WESTERCRAIGS



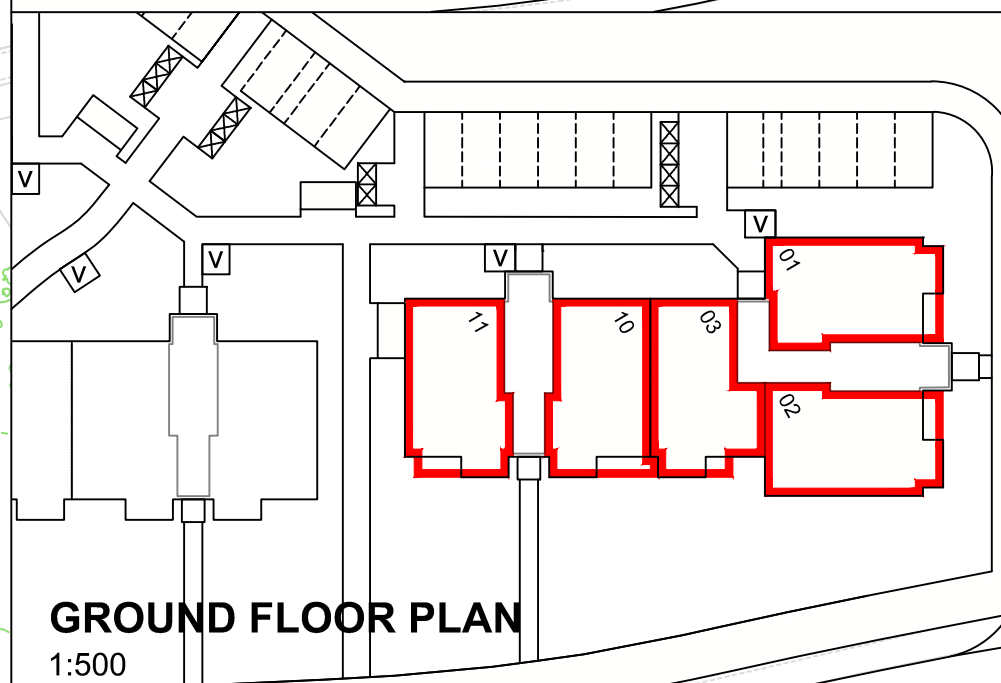
LOCATION PLAN
1:2500



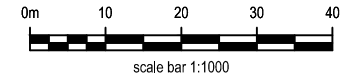
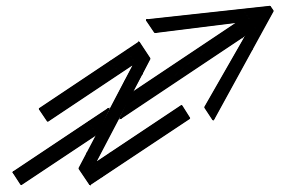
SECOND FLOOR PLAN
1:500



FIRST FLOOR PLAN
1:500



GROUND FLOOR PLAN
1:500



No.	Revision	Date	By



Robertson House, Castle Business Park, Stirling FK9 4TZ
Tel: 01786 431600 Fax: 01786 431650
Email: info@robertson.co.uk
www.robertsonhomes.co.uk

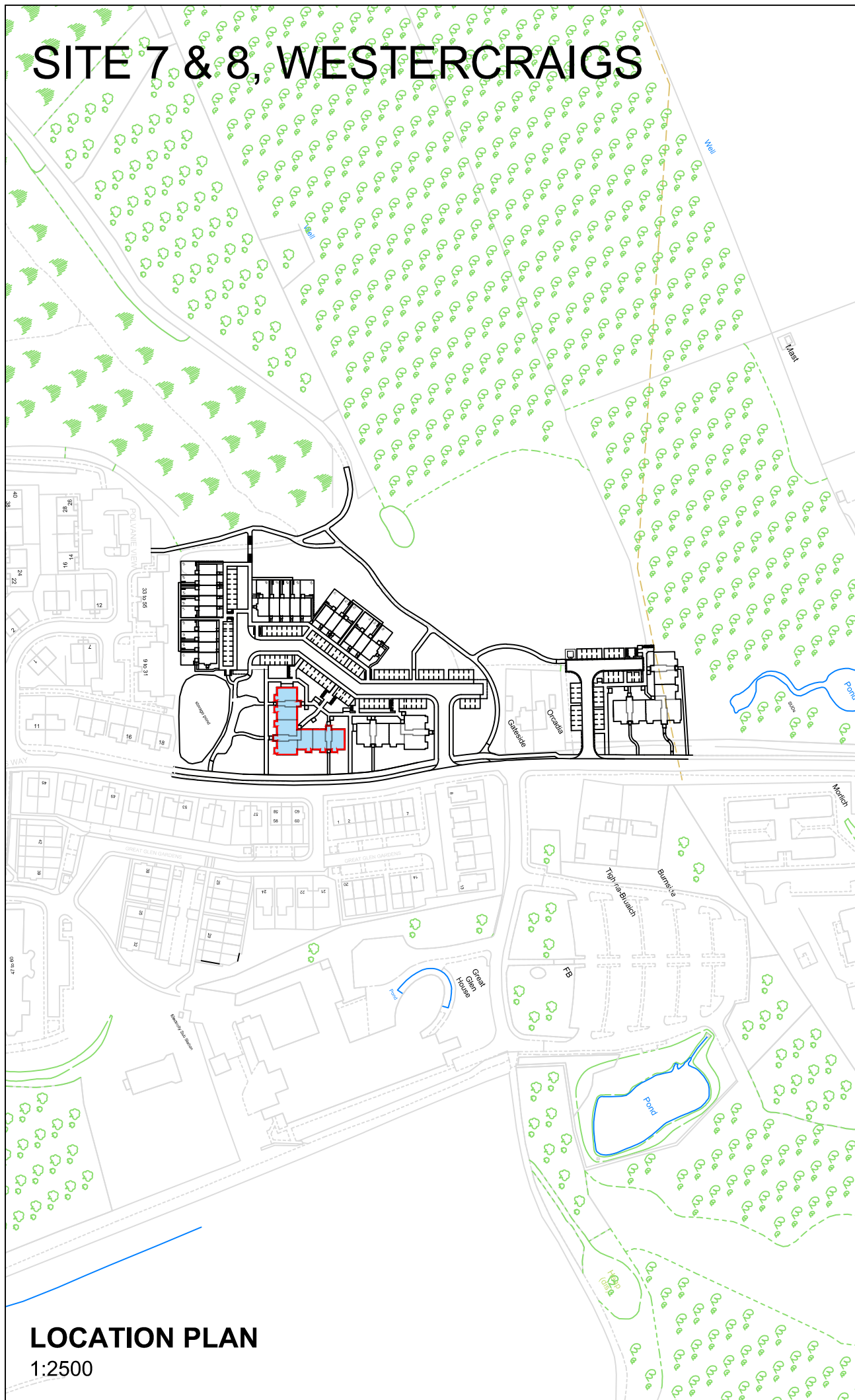
Project Title:
**SITE 7 & 8
WESTERCRAIGS
INVERNESS**

Drawing Title:
**FEU PLAN
BLOCK 2
PLOTS 01-15**

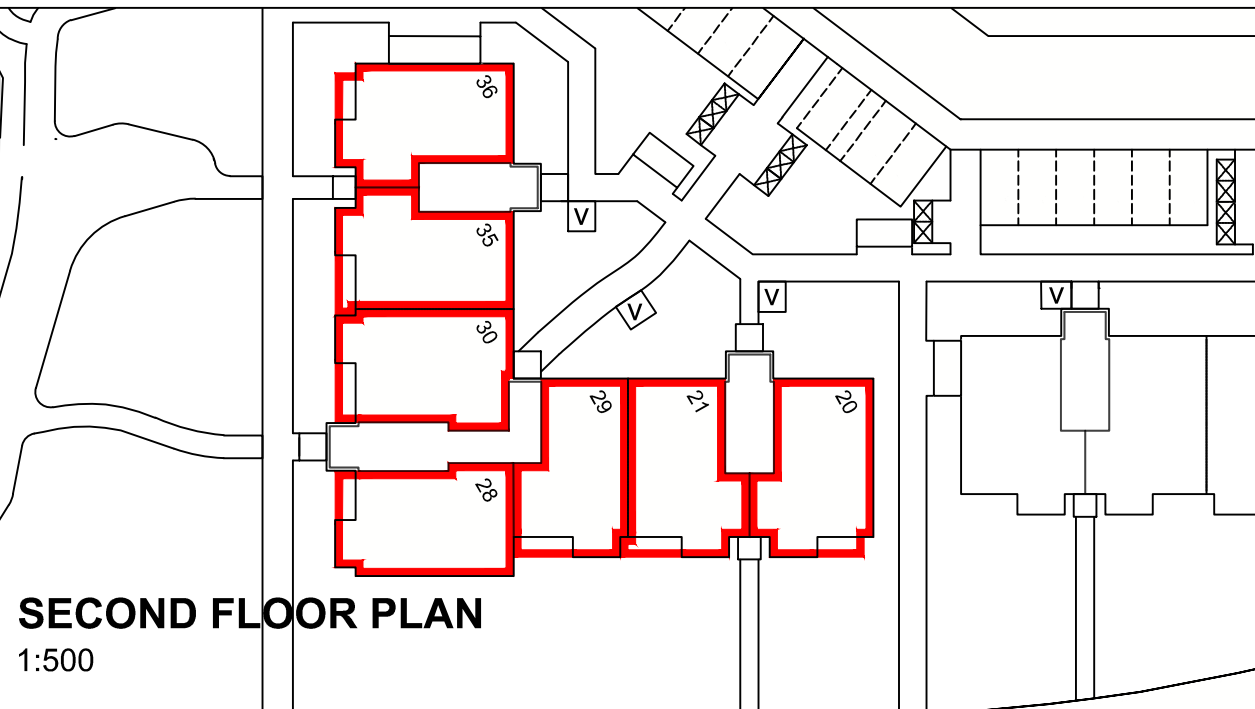
Scale at A3: Various	Date: APR 2023
Drawn: AM	Checked: JM

Drawing No. 1107-8 - FEU-01-15	Rev: -
--	------------------

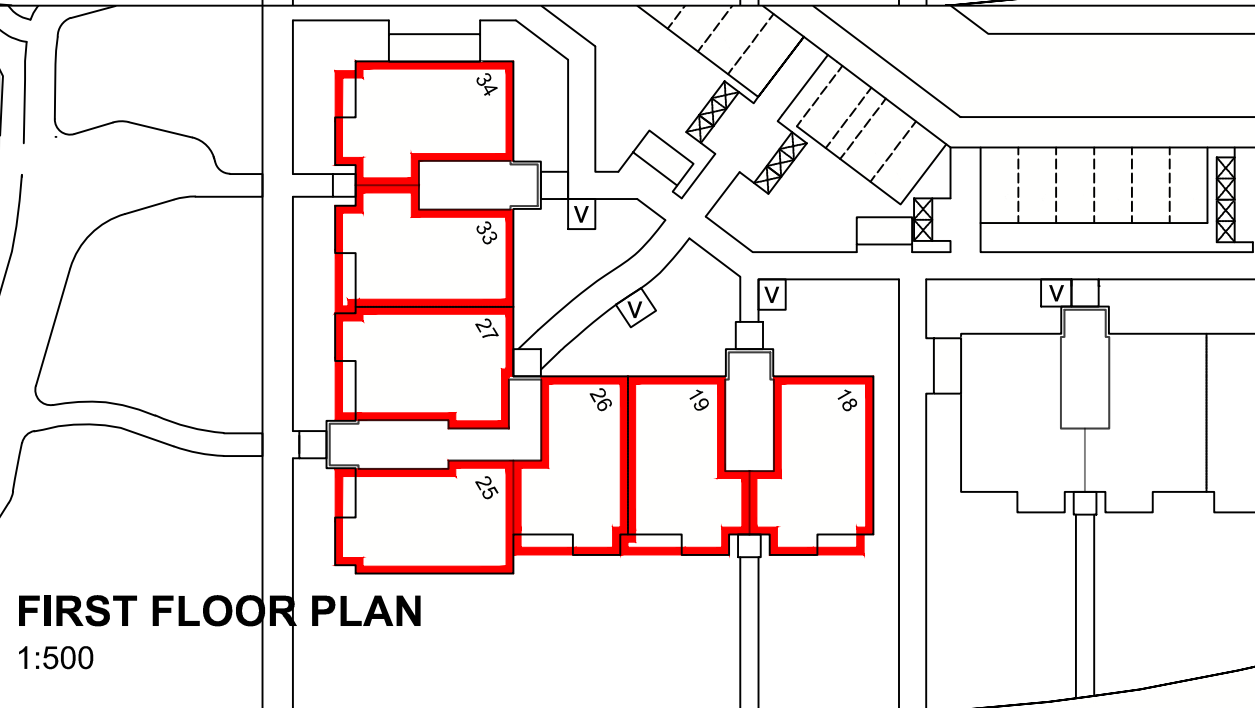
SITE 7 & 8 WESTERCRAIGS



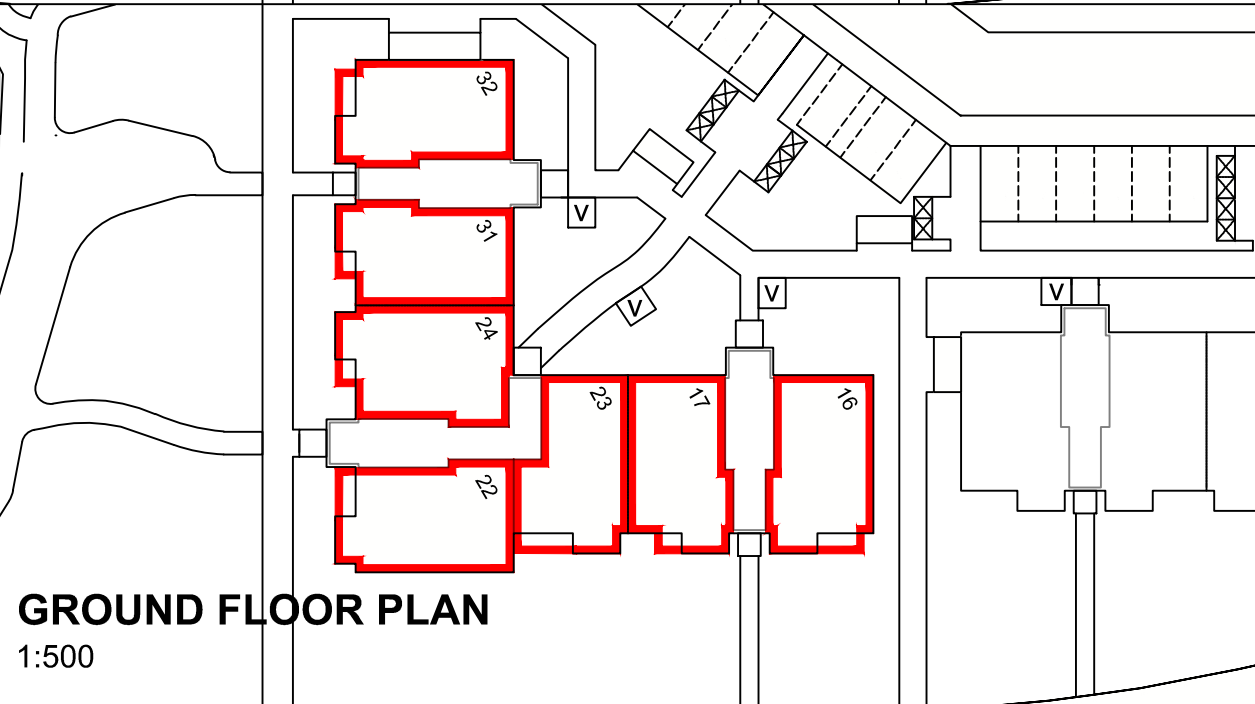
LOCATION PLAN
1:2500



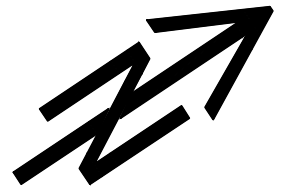
SECOND FLOOR PLAN
1:500



FIRST FLOOR PLAN
1:500



GROUND FLOOR PLAN
1:500



No.	Revision	Date	By



Robertson House, Castle Business Park, Stirling FK9 4TZ
Tel: 01786 431600 Fax: 01786 431650
Email: info@robertson.co.uk
www.robertsonhomes.co.uk

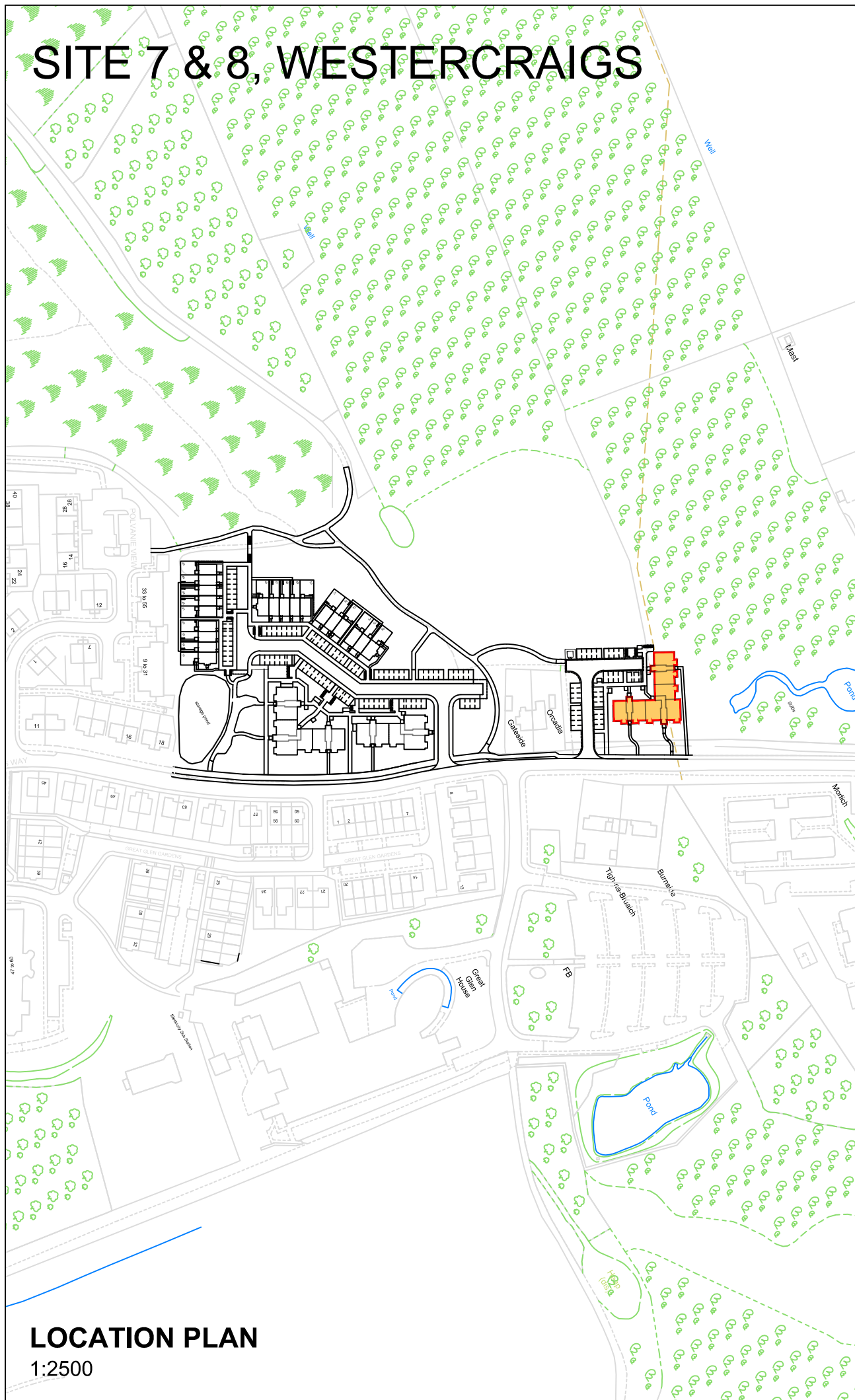
Project Title:
**SITE 7 & 8
WESTERCRAIGS
INVERNESS**

Drawing Title:
**FEU PLAN
BLOCK 1
PLOTS 16-36**

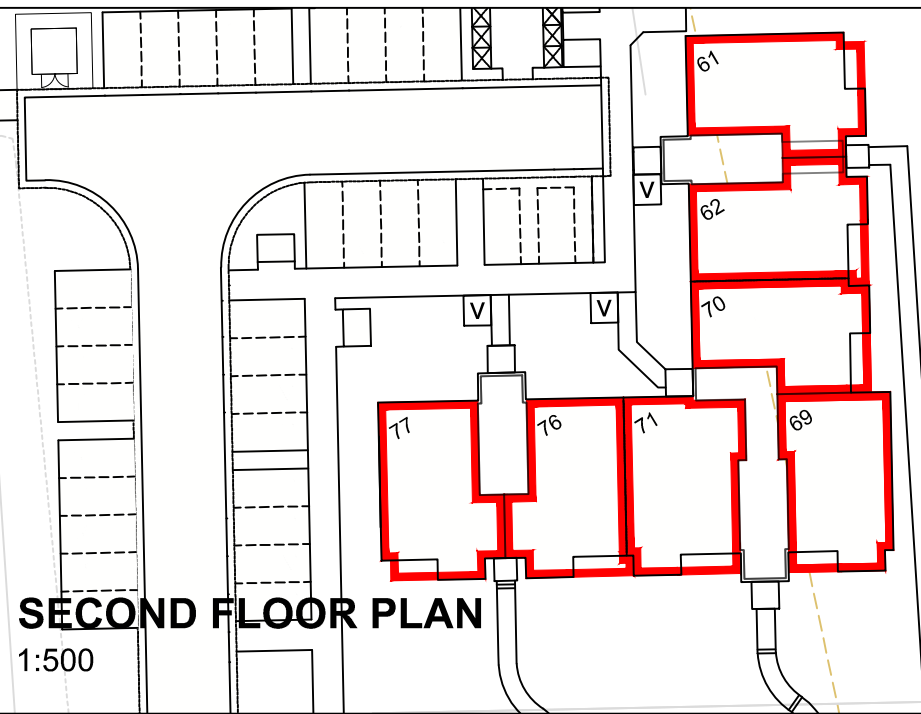
Scale at A3: Various	Date: APR 2023
Drawn: AM	Checked: JM

Drawing No. 1107-8 - FEU-16-36	Rev: -
-----------------------------------	-----------

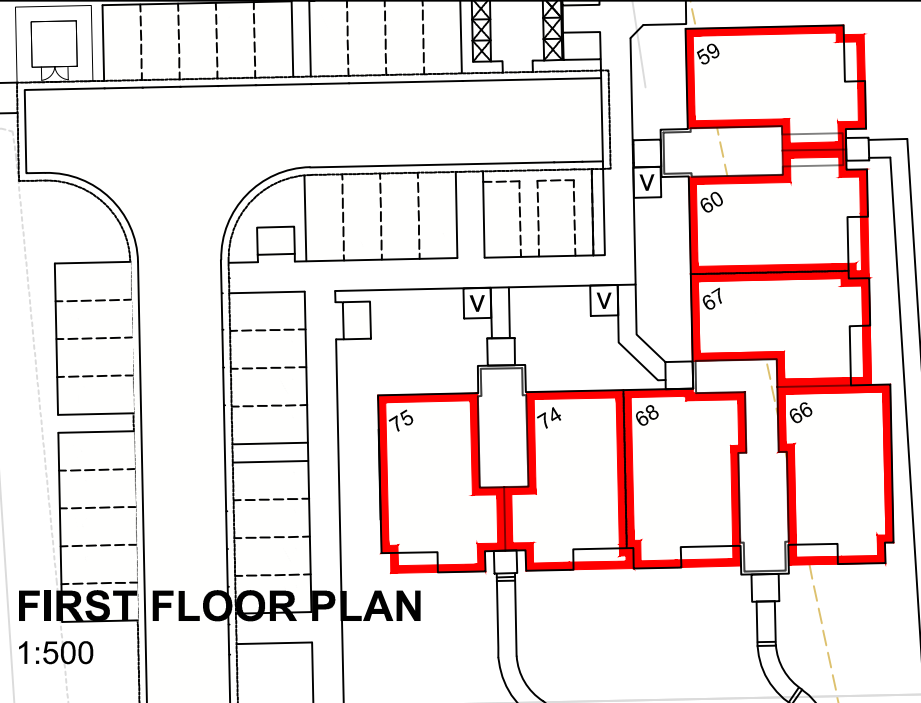
SITE 7 & 8 WESTERCRAIGS



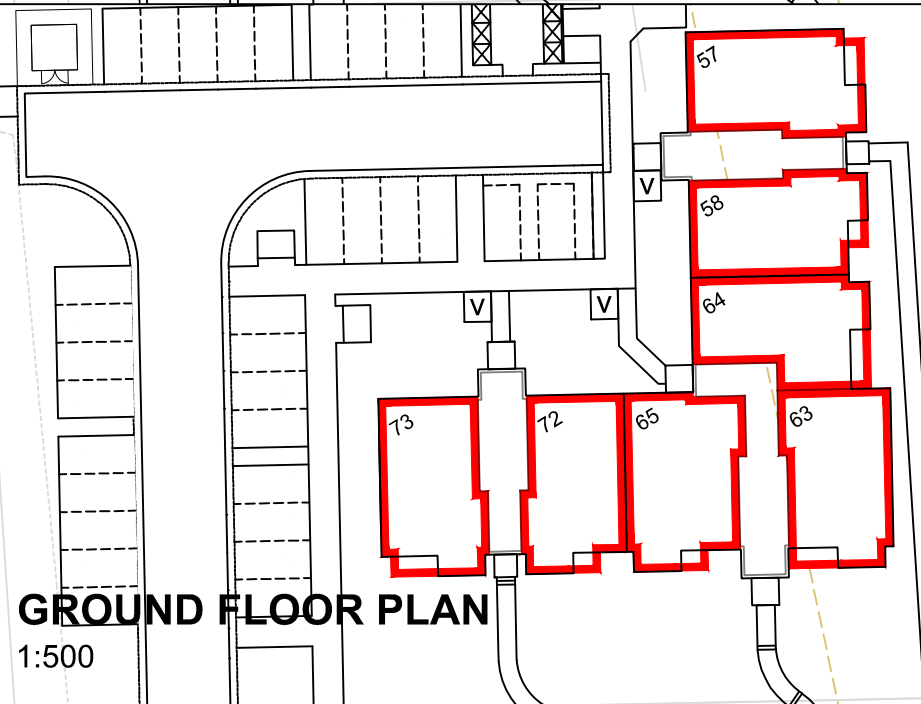
LOCATION PLAN
1:2500



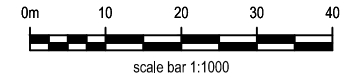
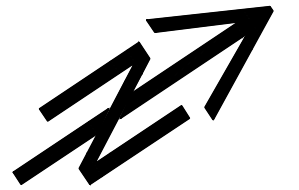
SECOND FLOOR PLAN
1:500



FIRST FLOOR PLAN
1:500



GROUND FLOOR PLAN
1:500



No.	Revision	Date	By



Robertson House, Castle Business Park, Stirling FK9 4TZ
Tel: 01786 431600 Fax: 01786 431650
Email: info@robertson.co.uk
www.robertsonhomes.co.uk

Project Title: SITE 7 & 8 WESTERCRAIGS INVERNESS	
Drawing Title: FEU PLAN BLOCK 3 PLOTS 57-77	
Scale at A3: Various	Date: APR 2023
Drawn: AM	Checked: JM
Drawing No. 1107-8 - FEU-57-77	Rev: -