

GYLEMUIR RD

New Adopted area

The development registered under title MID210562 and all plots within have been DPA approved on behalf of:

The Keeper - 04/10/2023

Keeper of the Registers of Scotland

General Notes

1. Dimensions are in millimetres unless stated otherwise.
2. Levels are in metres AOD unless stated otherwise.
3. Dimensions govern. Do not scale off drawing.
4. All dimensions to be verified on site before proceeding.
5. All discrepancies to be notified in writing to 7N Architects LLP.

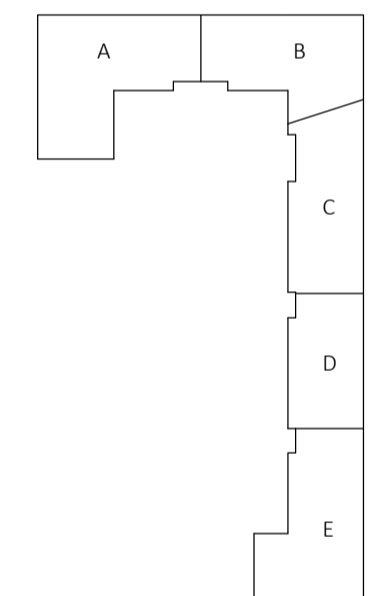
© 7N Architects LLP 2020

General Note

For further detail of site layout and landscaping refer to Landscape Architects Drawings.

Deeds Plan Key

- Rowanbank Gardens, 23-27 Gylemuir Road, Edinburgh
- Rowanbank Gardens Communal Amenity
- Block Communal Amenity
- Block Communal External Amenity
- Individual Apartment Demise
- Individual Plot Terrace, Garden, Balcony Boundary
- Individual Parking Space
- Accessible Parking Space
- Refuse Store
- Garden Cycle Stores
- Motorcycle Parking
- Substation



Rowanbank Gardens,
23-27 Gylemuir Road,
Edinburgh

Affordable Apartments
Core E

6	11.01.22	Updated with DLA Piper comments	7N
5	14.09.21	Updated with DLA Piper comments	7N
4	20.08.21	Updated with DLA Piper comments	7N
3	20.07.21	Parking numbering updated	7N
2	16.07.21	Updated in line with comments	7N
1	10.06.21	First Issue	7N
Rev	Date	Reason For Issue	Chk

7N Architects

7 Randolph Place, Edinburgh EH3 7TE +44 (0) 131 220 5541 www.7narchitects.com

Client
Artisan Real Estate

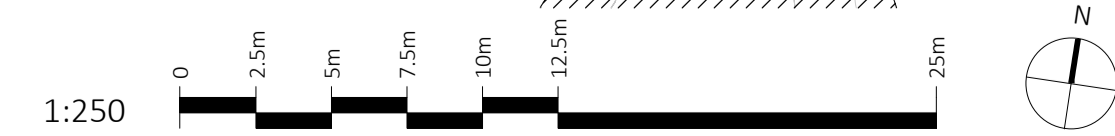
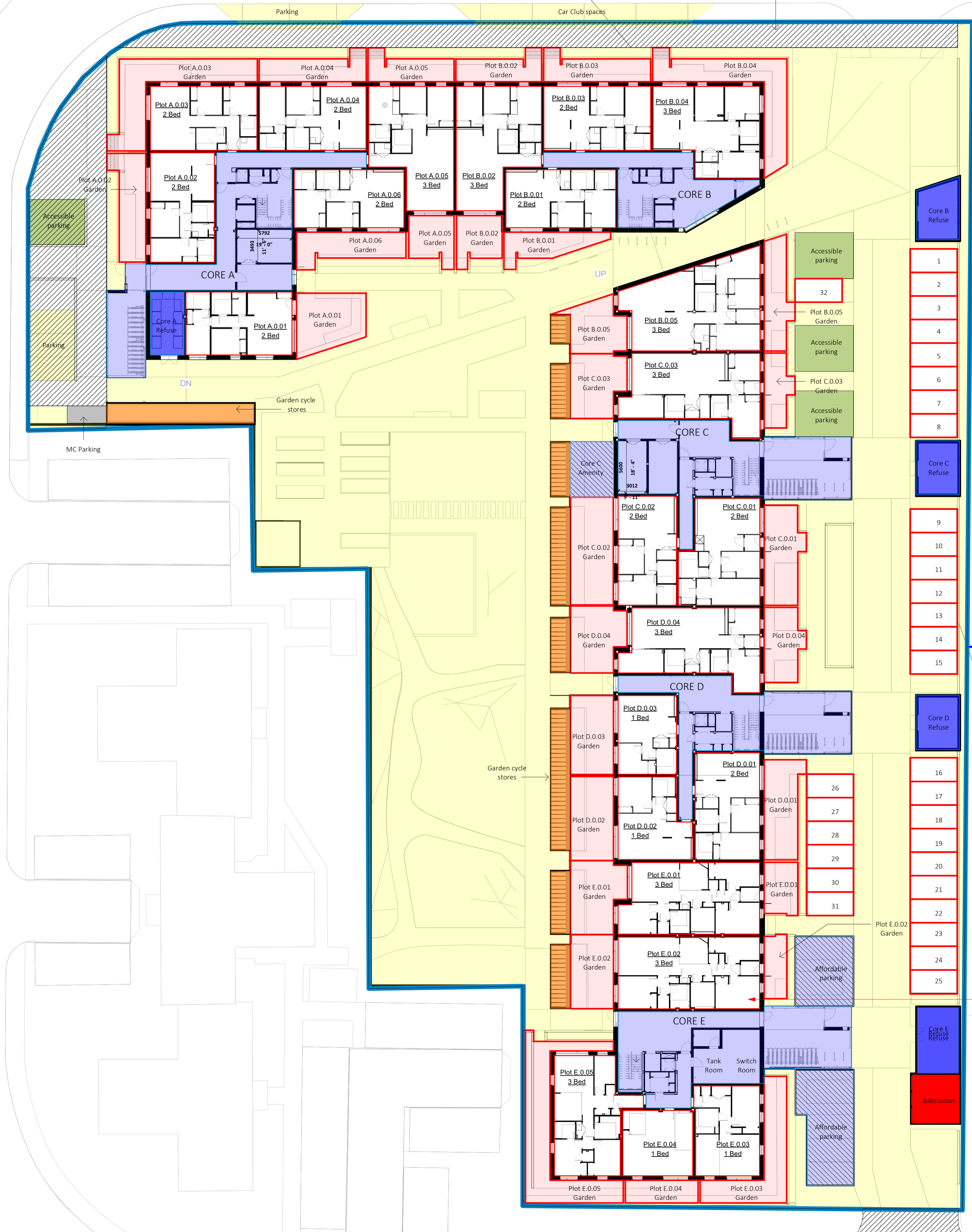
Project
Rowanbank Gardens

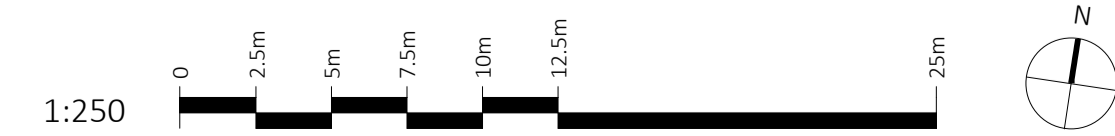
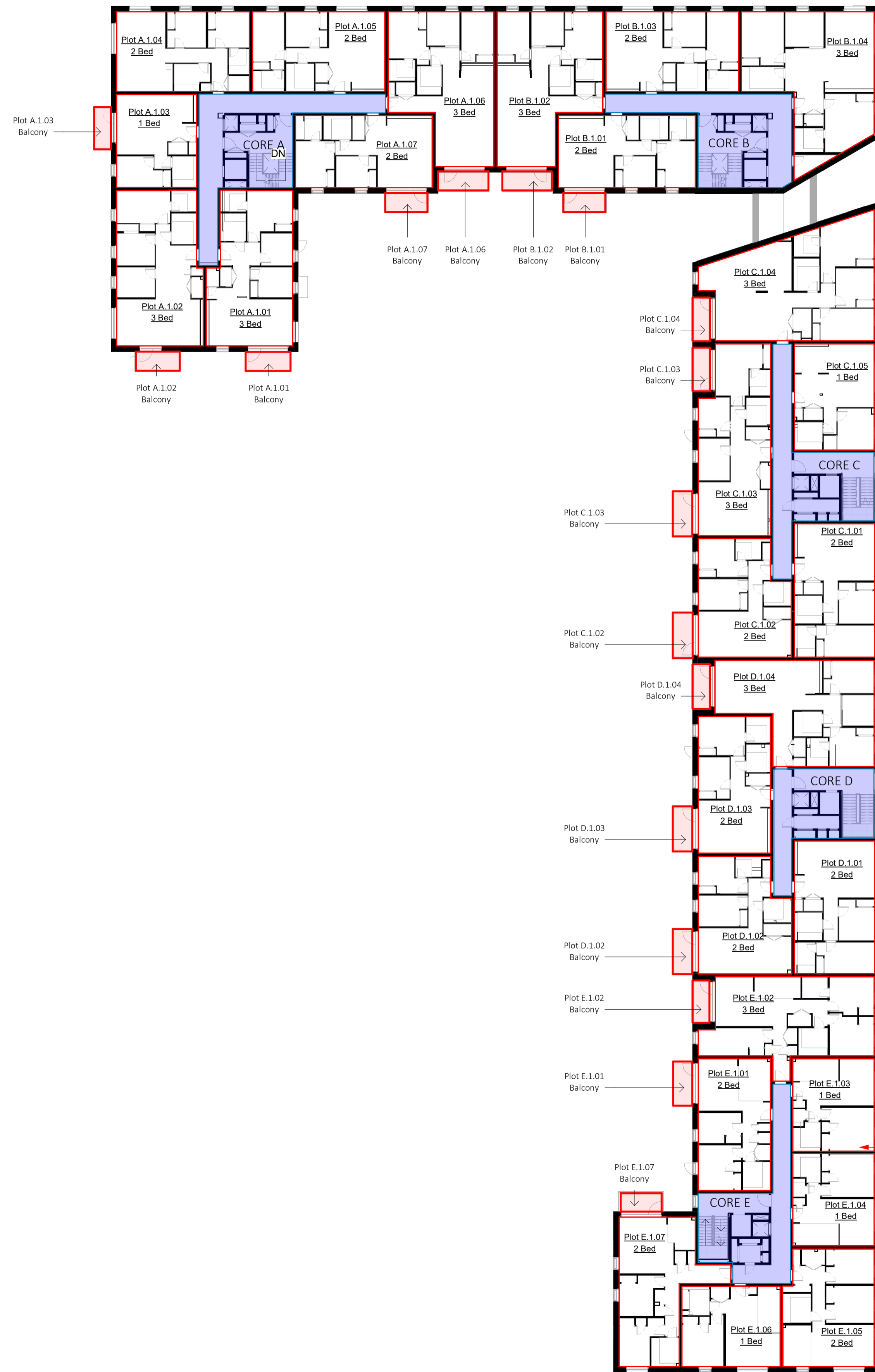
Drawing Title
Private Apartment Demise Plans Level 00
10400 - Demise Plans 1.250

Status
Information

Scale Paper Size Date
As indicated @A1 06/07/21

Project No. Draw No. Rev No.
142 7N-XX-00-DR-A-10410 6





General Notes

1. Dimensions are in millimetres unless stated otherwise.
2. Levels are in metres AOD unless stated otherwise.
3. Dimensions govern. Do not scale off drawing.
4. All dimensions to be verified on site before proceeding.
5. All discrepancies to be notified in writing to 7N Architects (Randolph) Ltd.

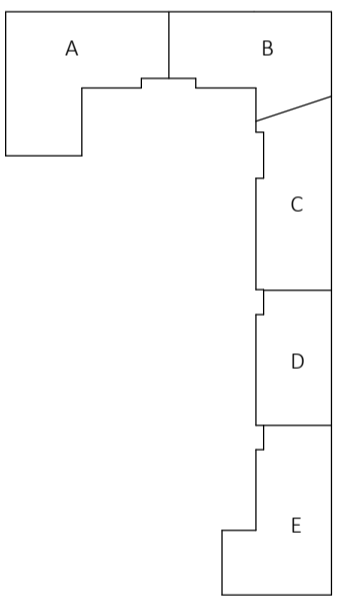
© 7N Architects (Randolph) Ltd 2022

General Note

For further detail of site layout and landscaping refer to Landscape Architects Drawings.

Deeds Plan Key

- Rowanbank Gardens, 23-27 Gylemuir Road, Edinburgh
- Rowanbank Gardens Communal Amenity
- Block Communal Amenity
- Block Communal External Amenity
- Individual Apartment Demise
- Individual Plot Terrace, Garden, Balcony Boundary
- 1 Individual Parking Space
- Accessible Parking Space
- Refuse Store
- Garden Cycle Stores
- Motorcycle Parking
- Substation



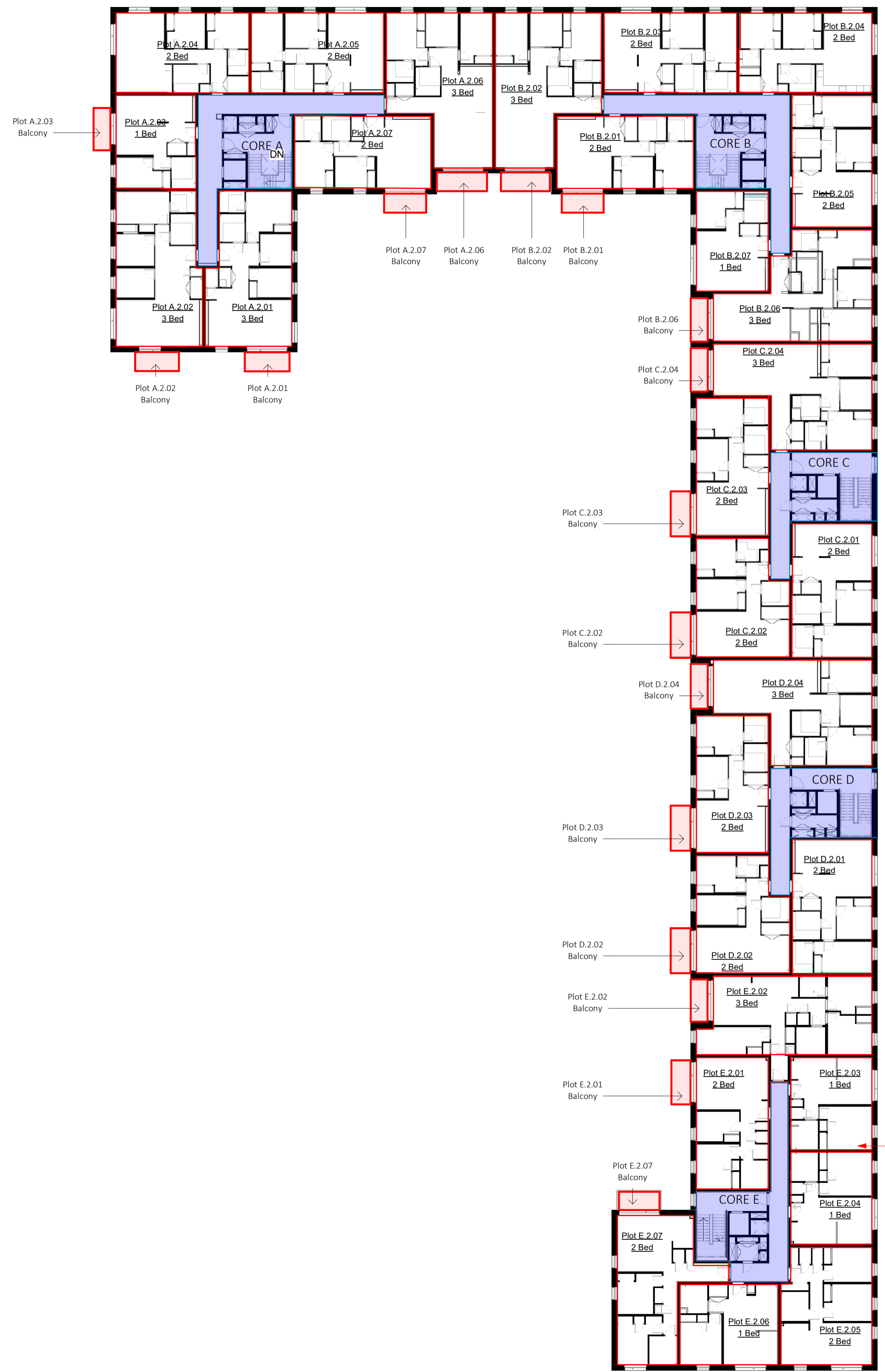
Rev	Date	Reason For Issue	Chk
5	10.10.23	Update C.1.04 Balcony	7N
4	23.05.23	Demise Plan Plot B.1.04	7N
3	20.08.21	Updated with DLA Piper comments	7N
2	16.07.21	Updated in line with comments	7N
1	10.06.21	First Issue	7N

Affordable Apartments
Core E

7N Architects

7 Randolph Place, Edinburgh EH3 7TE +44 (0) 131 220 5541 www.7narchitects.com

Client		
Artisan Real Estate		
Project		
Rowanbank Gardens		
Drawing Title		
Private Apartment Demise Plans Level 01 10400 - Demise Plans 1.250		
Status		
Construction		
Scale	Paper Size	Date
As indicated @A1		06/07/21
Project No.	Draw No.	Rev No.
142	7N-XX-01-DR-A-10411	5



Affordable Apartments
Core E

General Notes

1. Dimensions are in millimetres unless stated otherwise.
2. Levels are in metres AOD unless stated otherwise.
3. Dimensions govern.
Do not scale off drawing.
4. All dimensions to be verified on site before proceeding.
5. All discrepancies to be notified in writing to 7N Architects LLP.

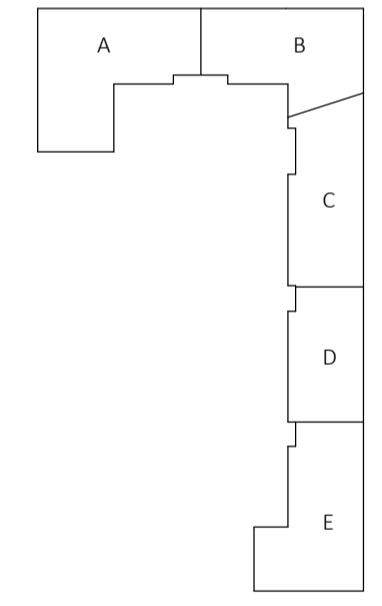
© 7N Architects LLP 2020

General Note

For further detail of site layout and landscaping refer to Landscape Architects Drawings.

Deeds Plan Key

- Rowanbank Gardens, 23-27 Gylemuir Road, Edinburgh
- Rowanbank Gardens Communal Amenity
- Block Communal Amenity
- Individual Apartment Demise
- Individual Plot Terrace, Garden, Balcony Boundary
- 1 Individual Parking Space
- Accessible Parking Space
- Refuse Store
- Garden Cycle Stores
- Motorcycle Parking
- Substation



Rev	Date	Reason For Issue	Chk
3	20.08.21	Updated with DLA Piper comments	7N
2	16.07.21	Updated in line with comments	7N
1	10.06.21	First Issue	7N

7N Architects

7 Randolph Place, Edinburgh EH3 7TE +44 (0) 131 220 5541 www.7narchitects.com

Client
Artisan Real Estate

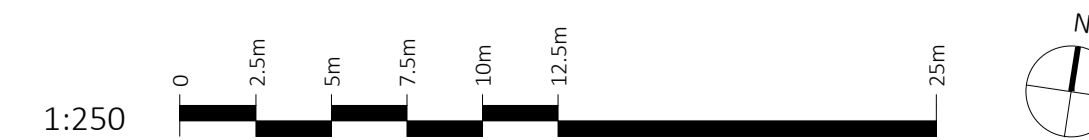
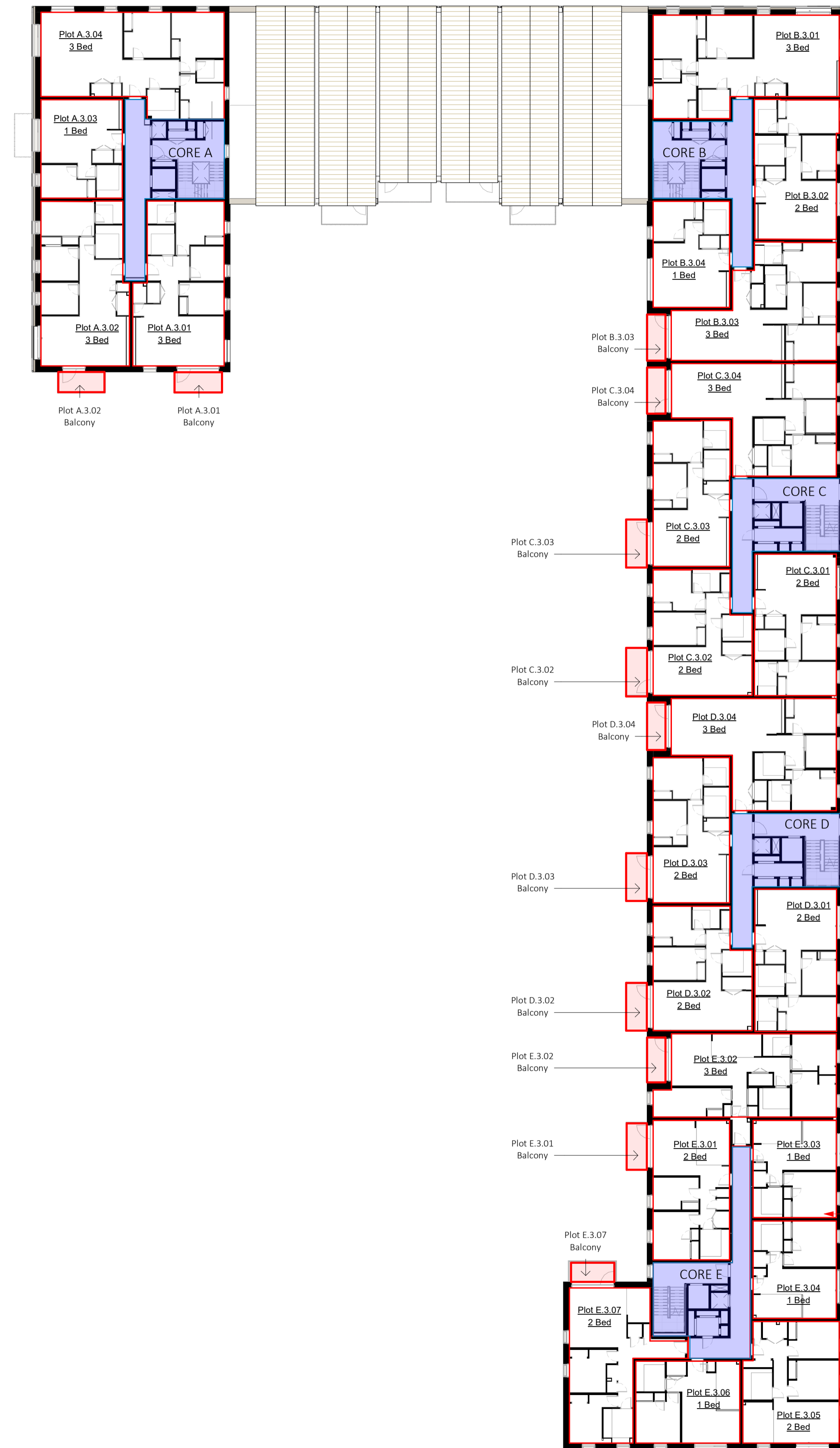
Project
Rowanbank Gardens

Drawing Title
Private Apartment Demise Plans Level 02
10400 - Demise Plans 1.250

Status
Information

Scale Paper Size Date
As indicated @A1 06/09/21

Project No. Draw No. Rev No.
142 7N-XX-02-DR-A-10412 3



General Notes

1. Dimensions are in millimetres unless stated otherwise.
2. Levels are in metres AOD unless stated otherwise.
3. Dimensions govern. Do not scale off drawing.
4. All dimensions to be verified on site before proceeding.
5. All discrepancies to be notified in writing to 7N Architects (Randolph) Ltd.

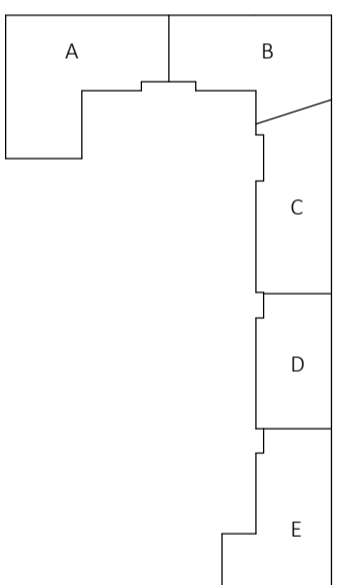
© 7N Architects (Randolph) Ltd 2022

General Note

For further detail of site layout and landscaping refer to Landscape Architects Drawings.

Deeds Plan Key

- Rowanbank Gardens, 23-27 Gylemuir Road, Edinburgh
- Rowanbank Gardens Communal Amenity
- Block Communal Amenity
- Block Communal External Amenity
- Individual Apartment Demise
- Individual Plot Terrace, Garden, Balcony Boundary
- 1 Individual Parking Space
- Accessible Parking Space
- Refuse Store
- Garden Cycle Stores
- Motorcycle Parking
- Substation



Affordable Apartments
Core E

Rev	Date	Reason For Issue	Chk
4	27.09.23	Demise Annotation Updated	7N
3	20.08.21	Updated with DLA Piper comments	7N
2	16.07.21	Updated in line with comments	7N
1	10.06.21	First Issue	7N

7N Architects

7 Randolph Place, Edinburgh EH3 7TE +44 (0) 131 220 5541 www.7narchitects.com

Client
Artisan Real Estate

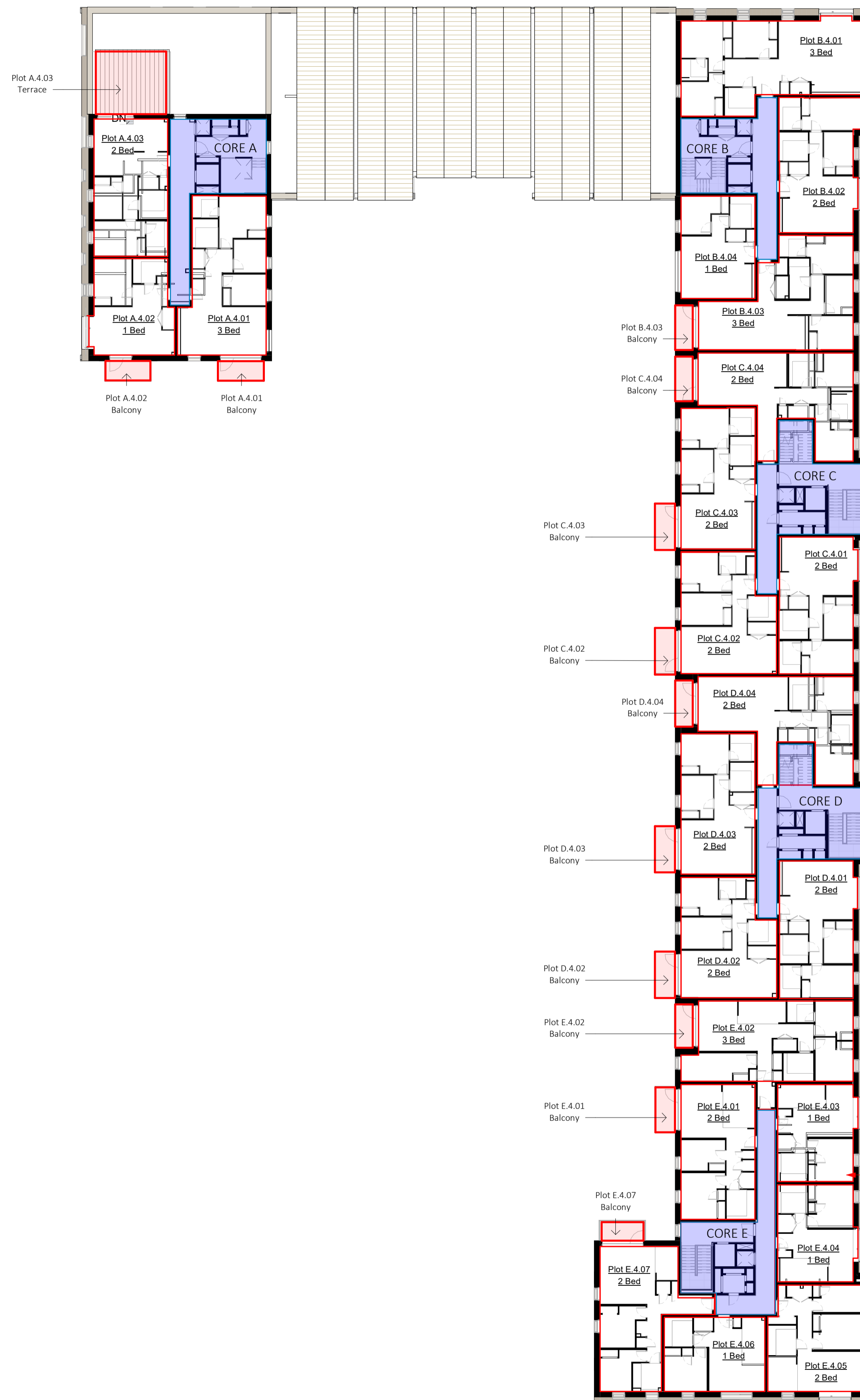
Project
Rowanbank Gardens

Drawing Title
Private Apartment Demise Plans Level 03
10400 - Demise Plans 1.250

Status
Construction

Scale	Paper Size	Date
As indicated	@A1	06/09/21

Project No.	Draw No.	Rev No.
142	7N-XX-03-DR-A-10413	4



General Notes

1. Dimensions are in millimetres unless stated otherwise.
2. Levels are in metres AOD unless stated otherwise.
3. Dimensions govern. Do not scale off drawing.
4. All dimensions to be verified on site before proceeding.
5. All discrepancies to be notified in writing to 7N Architects (Randolph) Ltd.

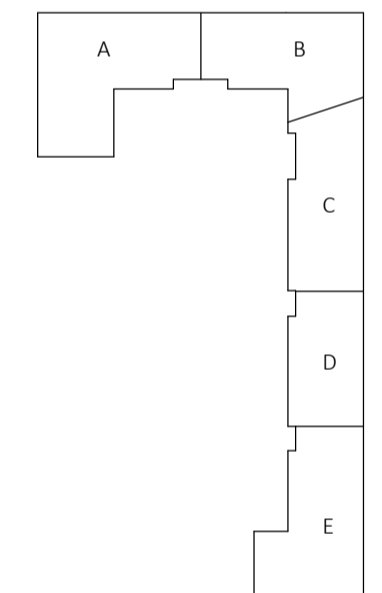
© 7N Architects (Randolph) Ltd 2022

General Note

For further detail of site layout and landscaping refer to Landscape Architects Drawings.

Deeds Plan Key

- Rowanbank Gardens, 23-27 Gylemuir Road, Edinburgh
- Rowanbank Gardens Communal Amenity
- Block Communal Amenity
- Block Communal External Amenity
- Individual Apartment Demise
- Individual Plot Terrace, Garden, Balcony Boundary
- 1 Individual Parking Space
- Accessible Parking Space
- Refuse Store
- Garden Cycle Stores
- Motorcycle Parking
- Substation



Affordable Apartments
Core E

Rev	Date	Reason For Issue	Chk
3	27.09.23	Demise Annotation Updated	7N
2	16.07.21	Updated in line with comments	7N
1	10.06.21	First Issue	7N

7N Architects

7 Randolph Place, Edinburgh EH3 7TE +44 (0) 131 220 5541 www.7narchitects.com

Client
Artisan Real Estate

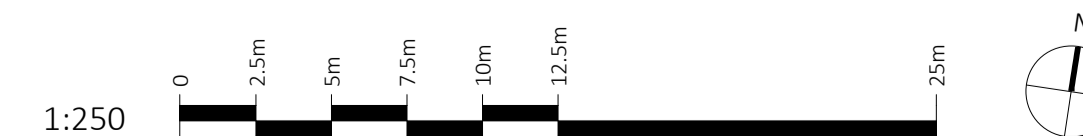
Project
Rowanbank Gardens

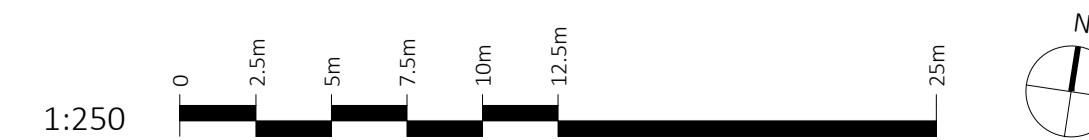
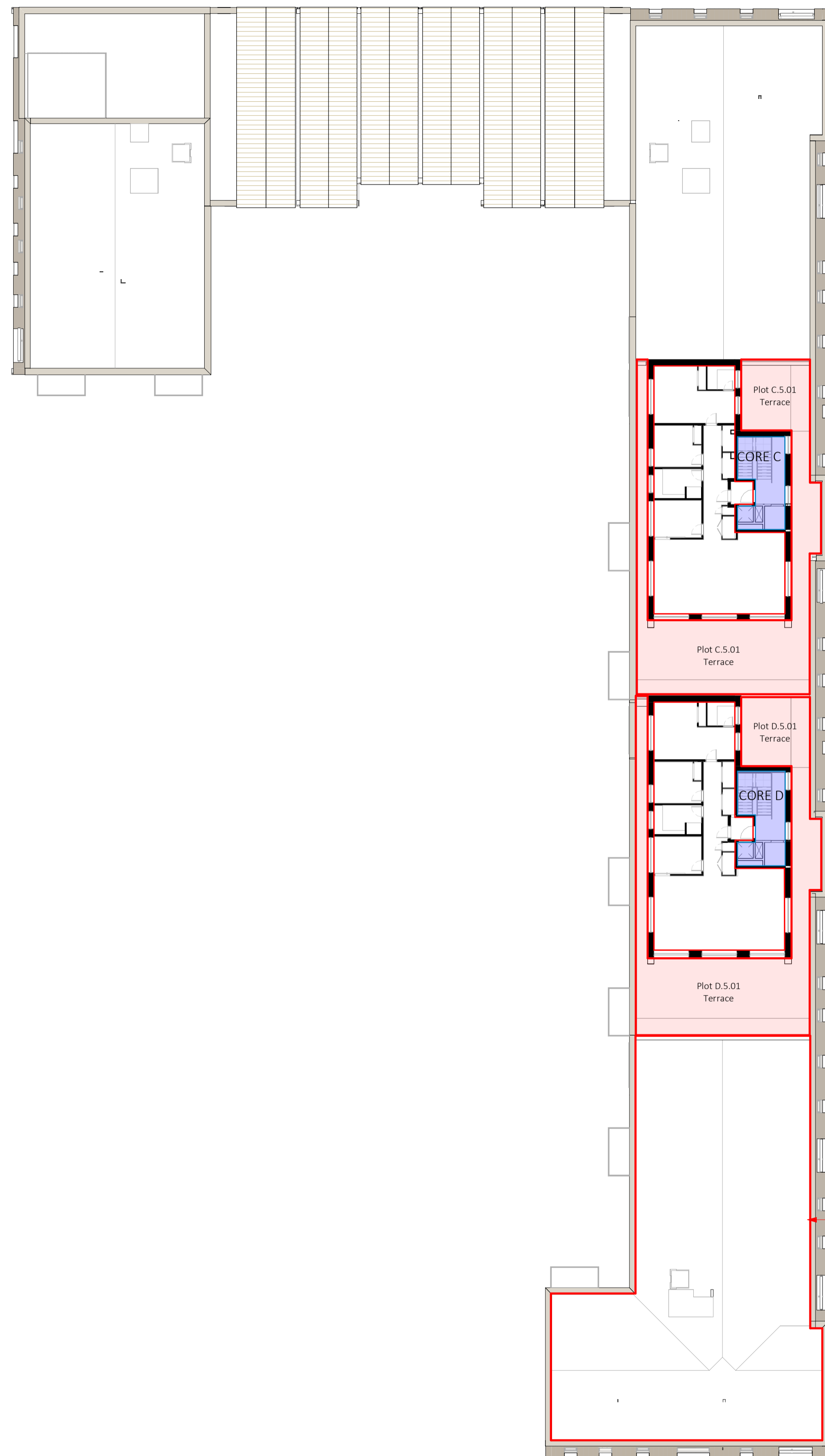
Drawing Title
Private Apartment Demise Plans Level 04
10400 - Demise Plans 1.250

Status
Construction

Scale Paper Size Date
As indicated @A1 06/09/21

Project No. Draw No. Rev No.
142 7N-XX-04-DR-A-10414 3





General Notes

1. Dimensions are in millimetres unless stated otherwise.
2. Levels are in metres AOD unless stated otherwise.
3. Dimensions govern.
Do not scale off drawing.
4. All dimensions to be verified on site before proceeding.
5. All discrepancies to be notified in writing to 7N Architects (Randolph) Ltd.

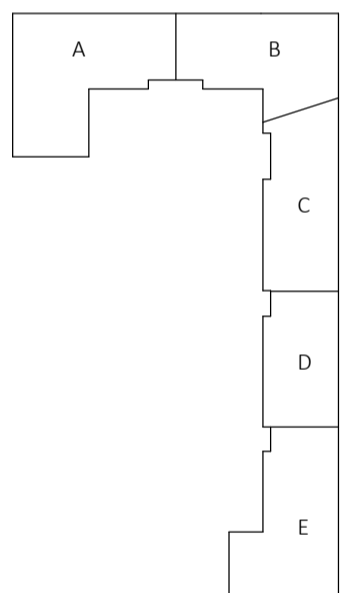
© 7N Architects (Randolph) Ltd 2022

General Note

For further detail of site layout and landscaping refer to Landscape Architects Drawings.

Deeds Plan Key

- Rowanbank Gardens, 23-27 Gylemuir Road, Edinburgh
- Rowanbank Gardens Communal Amenity
- Block Communal Amenity
- Block Communal External Amenity
- Individual Apartment Demise
- Individual Plot Terrace, Garden, Balcony Boundary
- Individual Parking Space
- Accessible Parking Space
- Refuse Store
- Garden Cycle Stores
- Motorcycle Parking
- Substation



Affordable Apartments
Core E

Rev	Date	Reason For Issue	Chk
4	11.04.23	Penthouse Terrace Area Extended	7N
3	20.08.21	Updated with DLA Piper comments	7N
2	16.07.21	Updated in line with comments	7N
1	10.06.21	First Issue	7N

7N Architects

7 Randolph Place, Edinburgh EH3 7TE +44 (0) 131 220 5541 www.7narchitects.com

Client
Artisan Real Estate

Project
Rowanbank Gardens

Drawing Title
Private Apartment Demise Plans Level 05 - 10400 - Demise Plans 1.250

Status
Construction

Scale Paper Size Date
As indicated @A1 06/09/21

Project No. Draw No. Rev No.
142 7N-XX-05-DR-A-10415 4