



NOTE:  
All proprietary goods and materials are to be fitted in accordance with manufacturer's instructions, Codes of Practice and British Standards. All dimensions to be verified by the Contractor on site. Do not scale drawings, work to figured dimensions only.

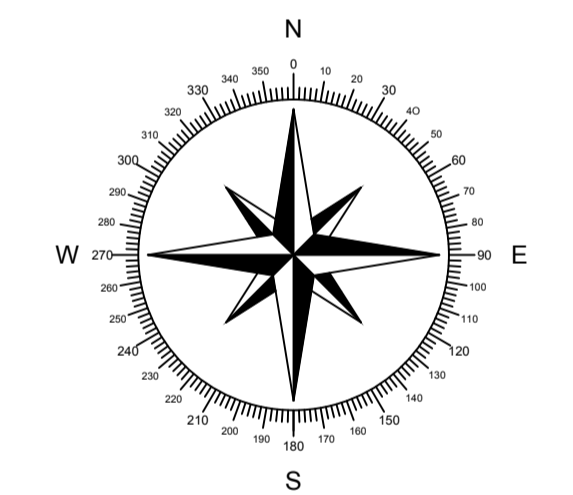
© This drawing remains the Copyright of Fouin+Bell Architects Ltd. and may not be reproduced in whole or in any part without prior written permission.

REVISION / DESCRIPTION / DATE

LEGEND	
	ADOPTED FOOTPATH
	NON-ADOPTED
	DRAINAGE CORRIDOR MANAGED BY FACTOR
	EXTENT OF FLAT/HOUSE
	EXTENT OF PLOT BOUNDARY
	EXTENT OF SHARED SPACE FOR ALL FOUR FLATS
	ADOPTED ROAD
	SERVICE STRIP
	AMENITY SPACE MANAGED BY FACTOR
	CAR PARKING BAY & BIN STORE
	EXTENT OF SHARED SPACE OF GROUND & FIRST FLOOR FLATS
	TIMBER CRIB RETAINING WALLS MANAGED BY FACTOR

The Development registered under title GLA220721 and plots 1 to 56 within the unique DPA identifiers GLA220721 and GLA220721-1ST FLR have been DPA approved by :  
*Craig McFadden - 26 August 2016*  
Craig McFadden ( DPA Officer)

SCALE 1:500 @ A1



**fouin + bell**  
architects

1 John's Place Edinburgh EH6 7EL  
T: 0131 478 7100 F: 0131 478 7111  
mail@fouin-bell.com www.fouin-bell.com

CLIENT

**Westpoint HOMES.**

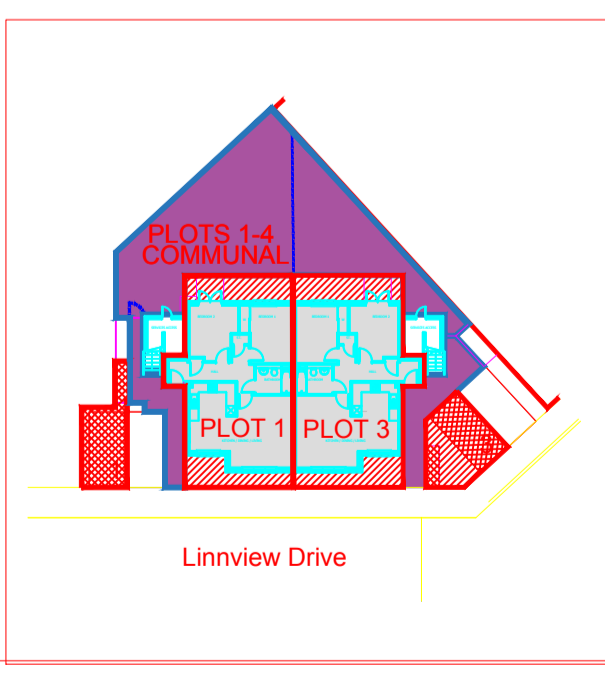
PROJECT  
RESIDENTIAL DEVELOPMENT  
SIMSHILL ROAD  
SIMSHILL  
GLASGOW

SCALE@A1 1:500@A1 1:1000@A3 DATE 25/07/16

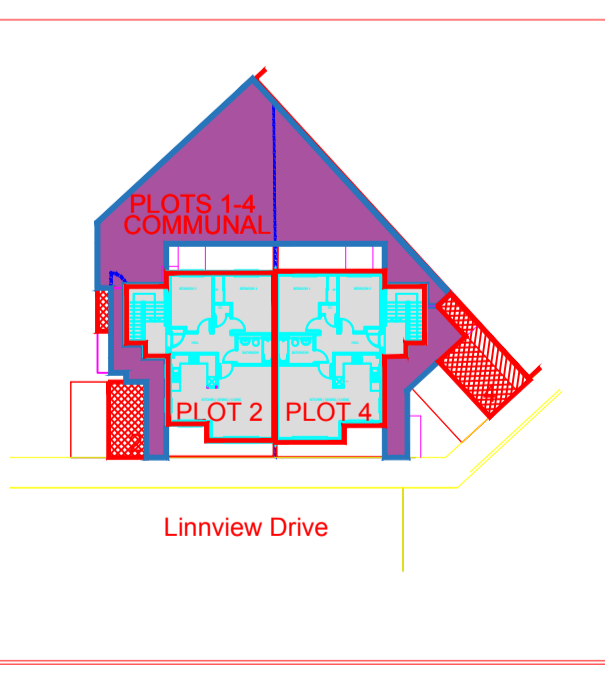
DRAWN BY IP CHECKED IH STAGE SALES

DRAWING  
SITE LAYOUT PLAN

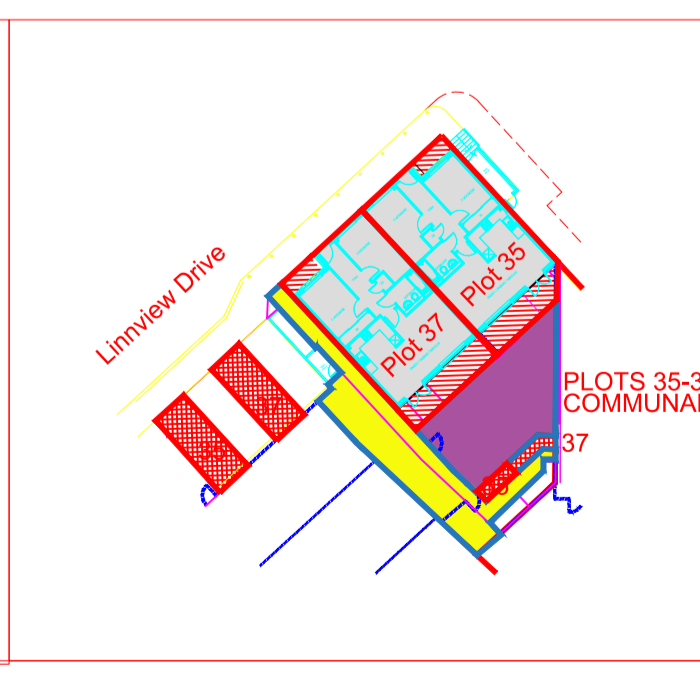
PROJECT NUMBER 15-104 DRAWING NUMBER (TP)00 REVISION



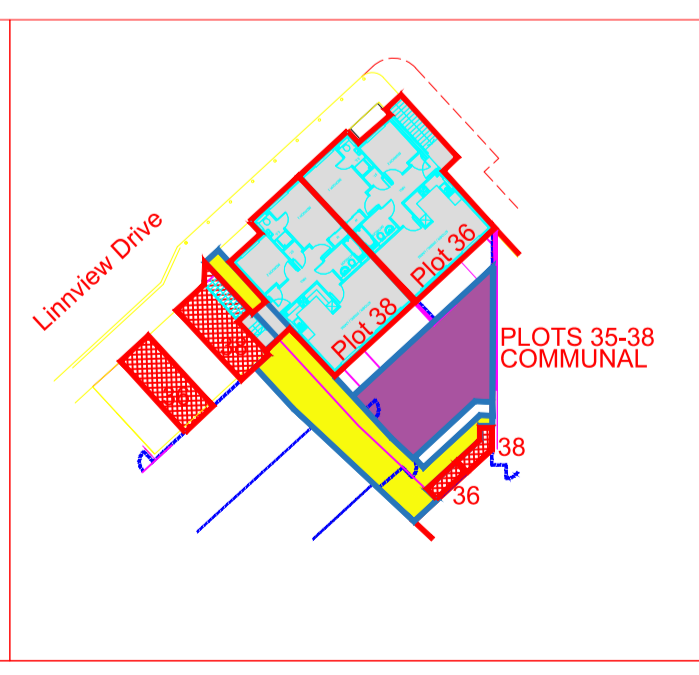
Plots 1 & 3 (Grd Floor Flats)



Plots 2 & 4 (1st Floor Flats)



Plots 35 & 37 (Grd Floor Flats)



Plots 36 & 38 (1st Floor Flats)

SITE PLAN  
1:500