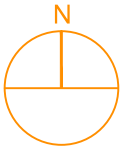
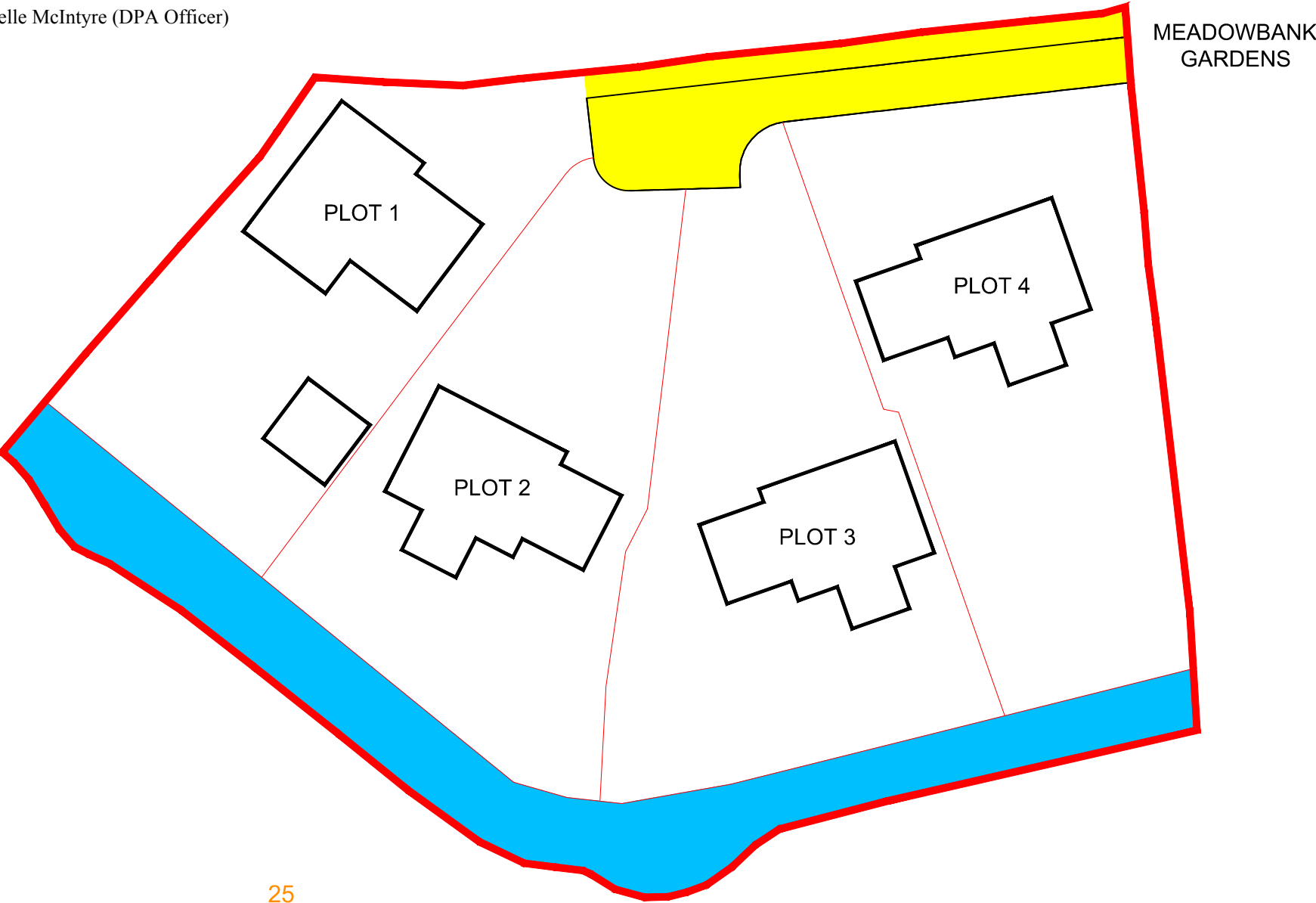


The Development registered under Title ANG79107 and plots 1 to 4 within have been DPA approved by:

D. McIntyre - 22nd January 2019

Danielle McIntyre (DPA Officer)

Project No.	Drawing No.	Rev.
1039	DEEDS	N/A
Rev Data	Amendment	



LEGEND

- ACCESS ROADWAY
- AMENITY AREA

DRAWING TO BE READ IN CONJUNCTION WITH STRUCTURAL ENGINEERS DETAILS AND SPECIFICATION. ENGINEERS DETAILS TO TAKE PRECEDENCE.

CONTRACTOR TO VERIFY ALL DIMENSIONS ON SITE.

ALL DIMENSIONS IN MILLIMETRES UNLESS STATED OTHERWISE.

CONTRACTOR NOT TO SCALE DIMENSIONS FROM DRAWINGS REFER TO ARCHITECT FOR DIMENSIONS IF NOT INDICATED ON THE DRAWING.



187 Strathmartine Road, Dundee, DD3 8BL
t : 01382 831557 f : 01382 831558
e : enquiries@arktx.co.uk

Project Title
RESIDENTIAL DEVELOPMENT
AT
MEADOWBANK GARDENS
WELLBANK
FOR
PENMAN GROUP

Element
DEED OF CONDITIONS

Date DEC '18		Drawn By. KM	
Scale 1:500 @ A4		CAD Ref. NEW BUILD	
Project No. 1039	Type -	Drawing No. DEEDS	Rev. N/A

© Crown Copyright. Ordnance Survey, 2022. All Rights Reserved in Chapter 10 of the Copyright, Design and Patents Act 1988. Data from Ordnance Survey.

