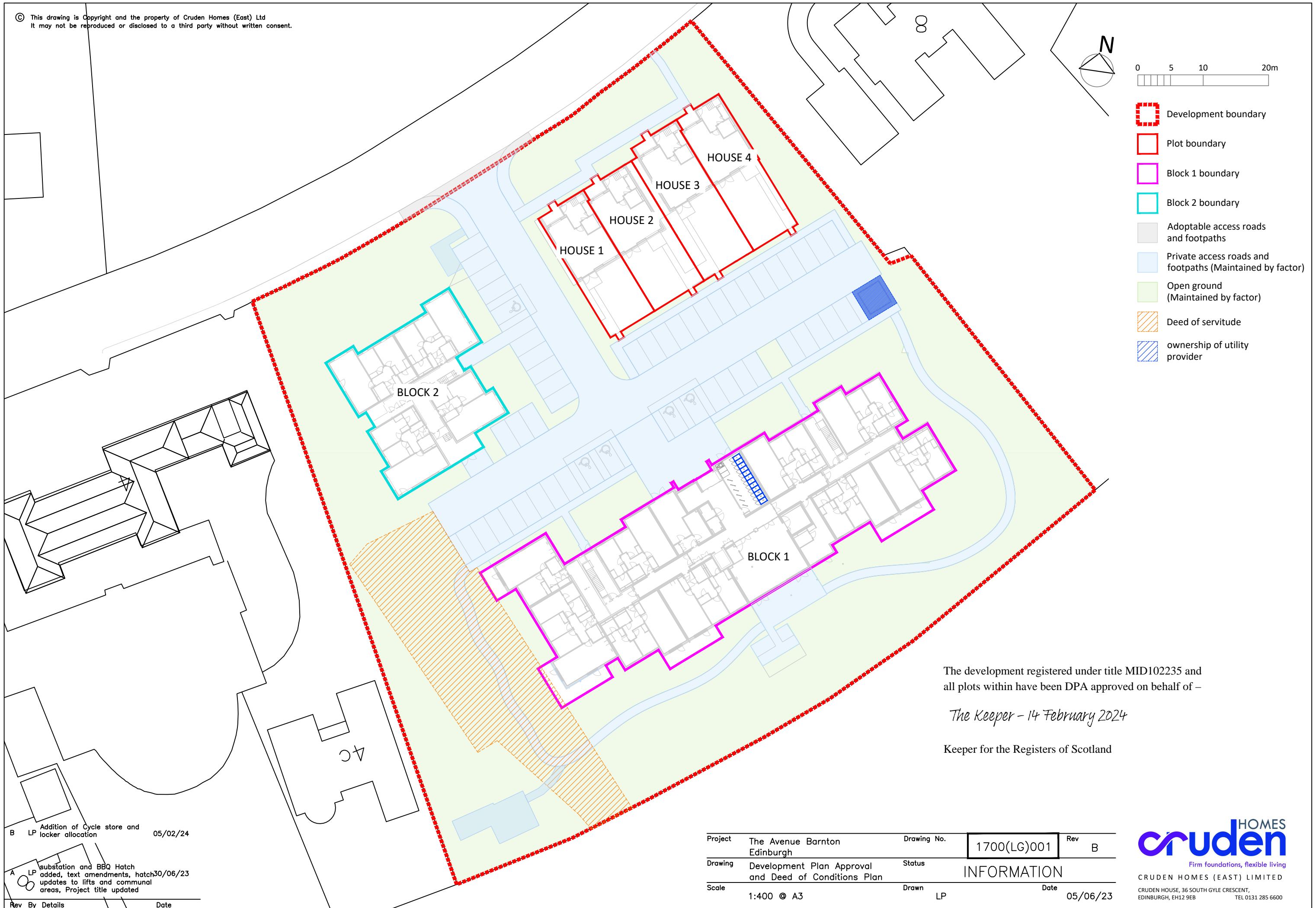
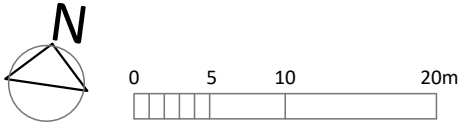


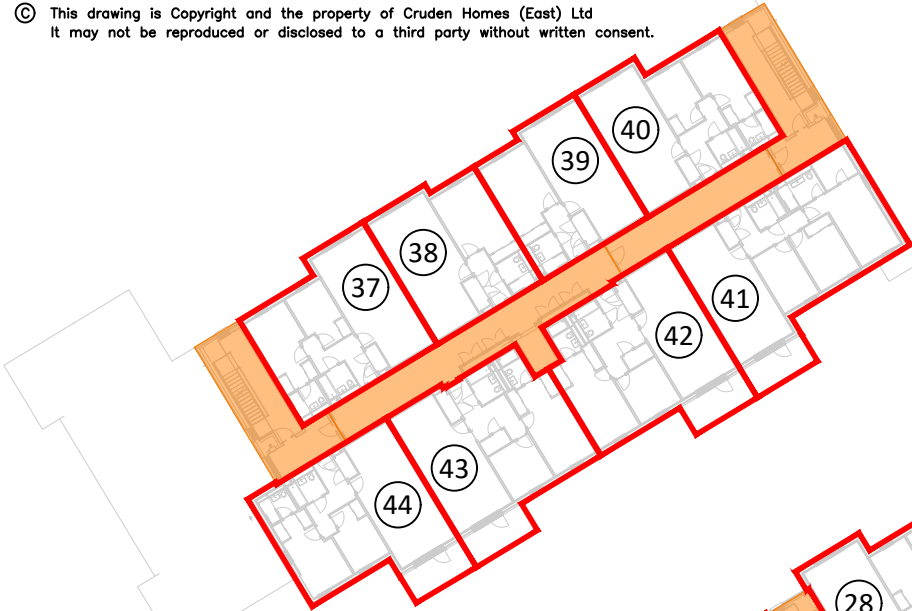
© This drawing is Copyright and the property of Cruden Homes (East) Ltd
It may not be reproduced or disclosed to a third party without written consent.



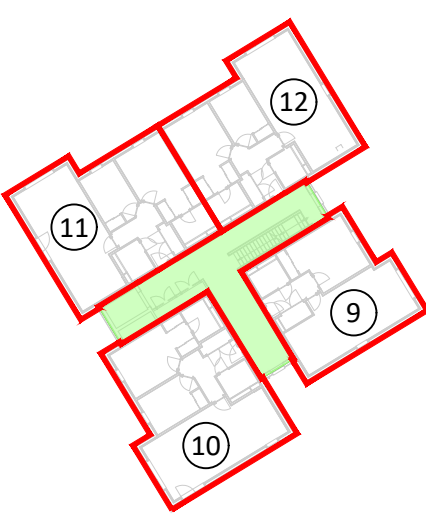
© This drawing is Copyright and the property of Cruden Homes (East) Ltd
It may not be reproduced or disclosed to a third party without written consent.



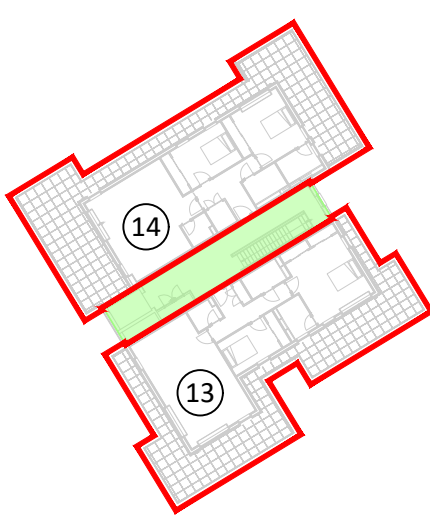
- Plot boundary
- Block 1 boundary
- Block 2 boundary
- Stair A/Block 1
- Stair B/Block 2
- Shared common area



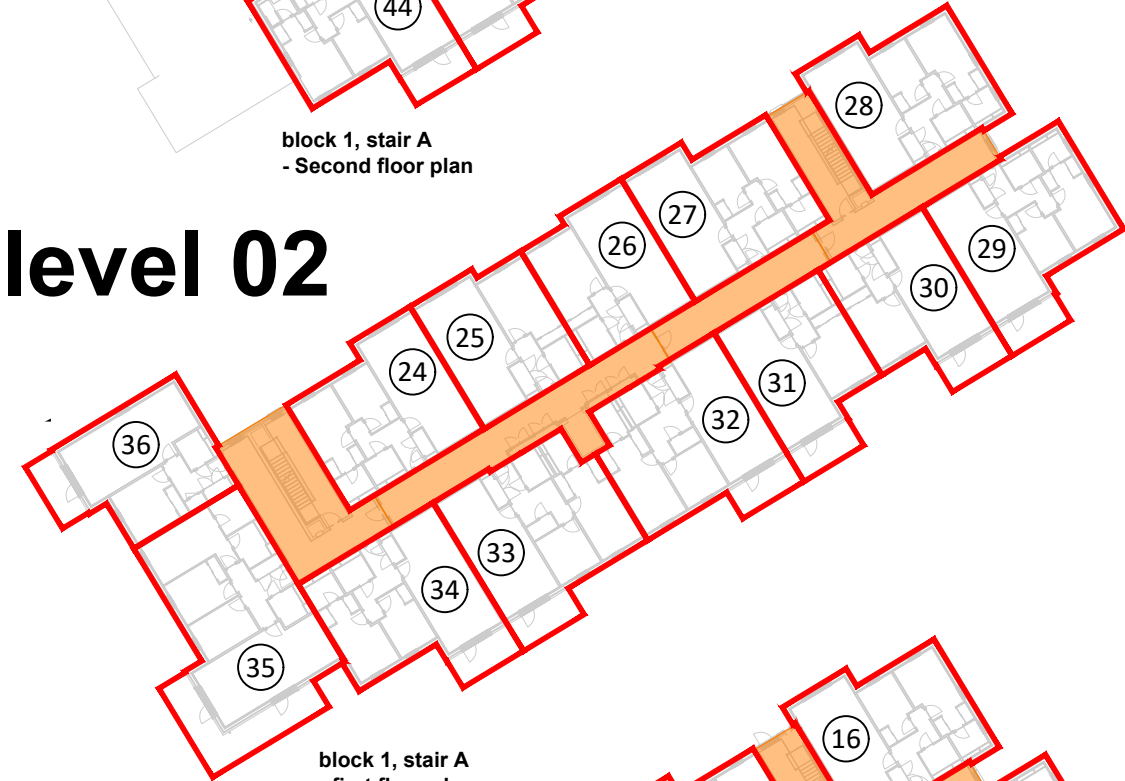
block 1, stair A
- Second floor plan



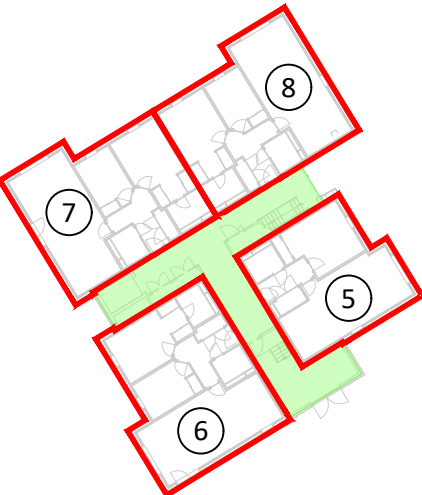
block 2, stair B
- first floor plan



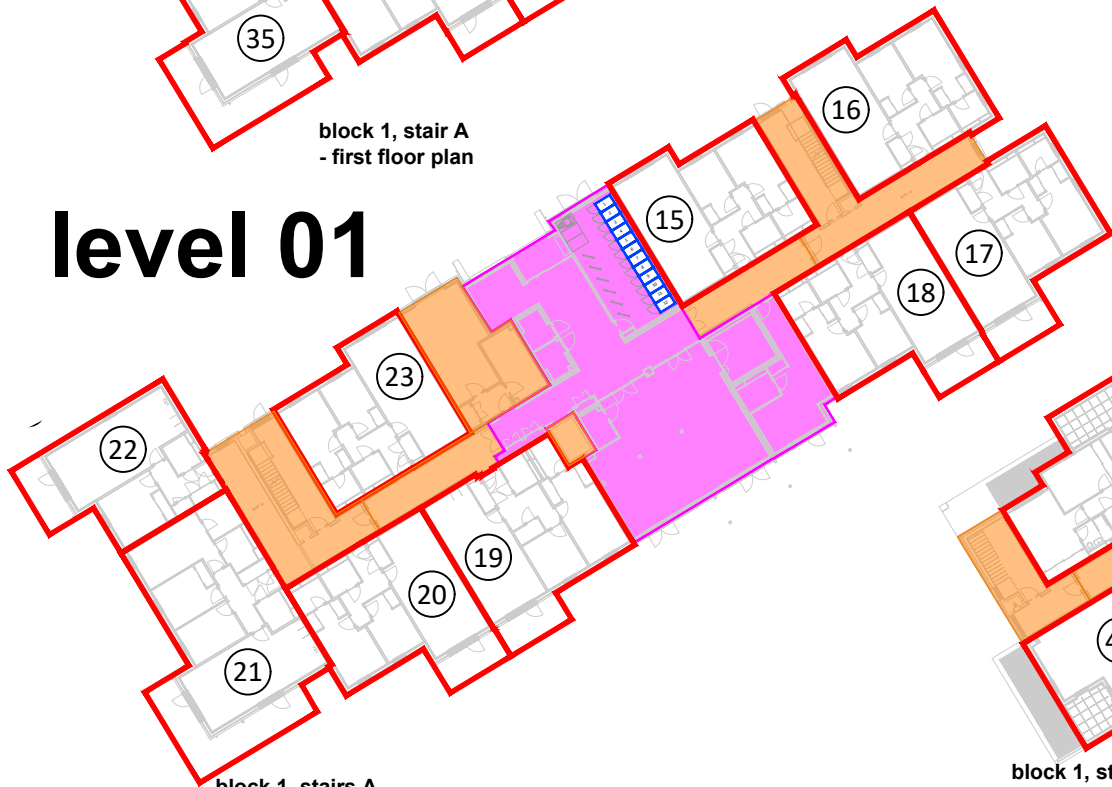
block 2, stair B
- Second floor plan



block 1, stair A
- first floor plan



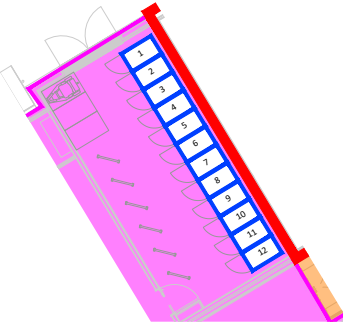
block 2, stairs B
ground floor plan



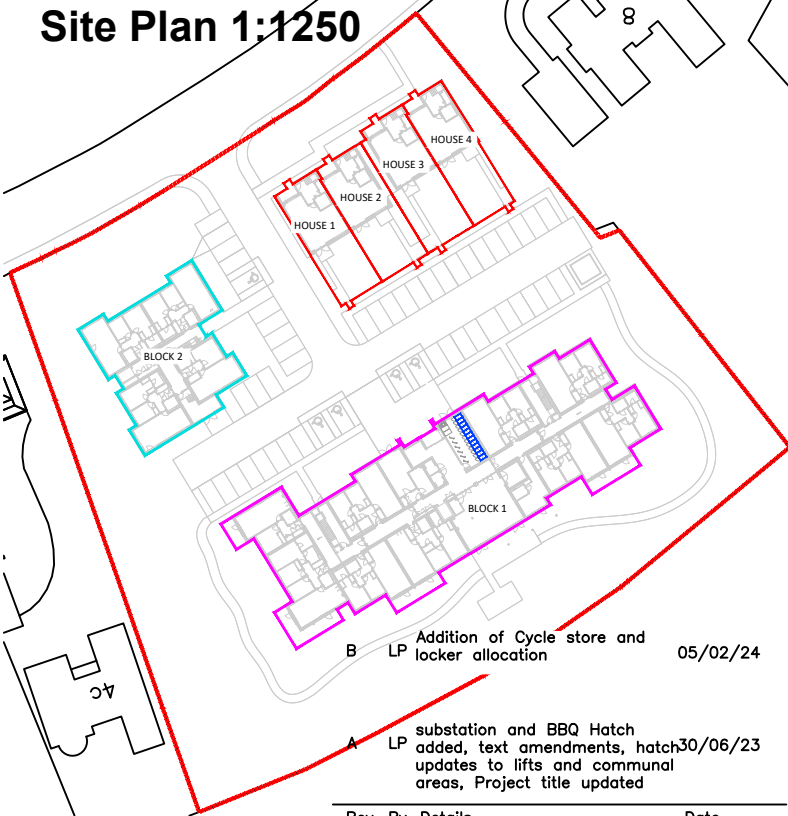
block 1, stairs A
- ground floor plan



block 1, stair A
- Third floor plan



block 1, Communal bike store - Locker Allocation
- ground floor plan



Site Plan 1:1250

Rev	By	Details	Date
B	LP	substation and BBQ Hatch added, text amendments, hatch30/06/23 updates to lifts and communal areas, Project title updated	05/02/24

Project	The Avenue Barnton Edinburgh	Drawing No.	1700(LG)002	Rev	B
Drawing	Development Plan Approval Block 1 Floor Plans	Status	INFORMATION	Date	05/06/23
Scale	1:400 @ A3	Drawn	LP		

cruden HOMES
Firm foundations, flexible living

CRUDEN HOMES (EAST) LIMITED
CRUDEN HOUSE, 36 SOUTH GYLE CRESCENT,
EDINBURGH, EH12 9EB
TEL 0131 285 6600