

Phase 4 of the Development registered under title PTH59420 and plots 139 to 141, 194 to 221 and 234 to 246 within have been DPA approved.

The Keeper - 13 March 2024

Keeper for the Registers of Scotland

NOTES

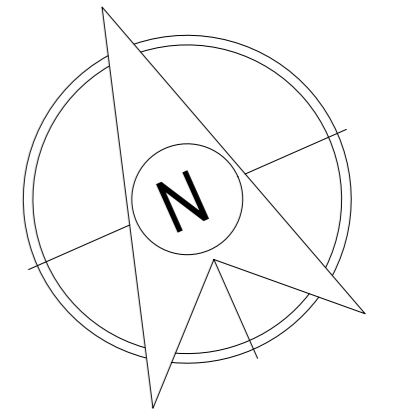
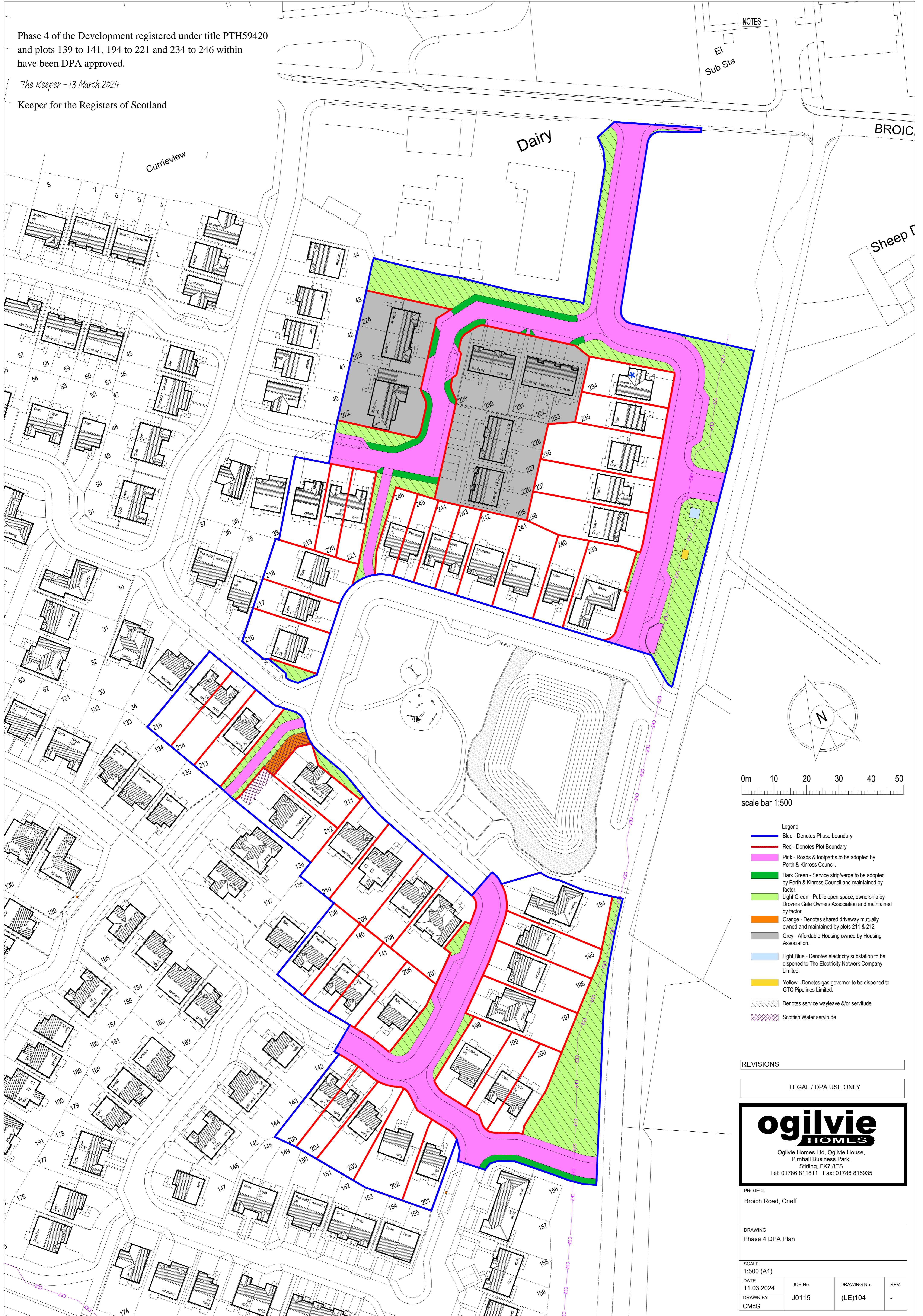
EI
Sub Sta

BROIC

Sheep P

Dairy

Currievue



0m 10 20 30 40 50
scale bar 1:500

Legend

- Blue - Denotes Phase boundary
- Red - Denotes Plot Boundary
- Pink - Roads & footpaths to be adopted by Perth & Kinross Council.
- Dark Green - Service strip/verge to be adopted by Perth & Kinross Council and maintained by factor.
- Light Green - Public open space, ownership by Drovers Gate Owners Association and maintained by factor.
- Orange - Denotes shared driveway mutually owned and maintained by plots 211 & 212
- Grey - Affordable Housing owned by Housing Association.
- Light Blue - Denotes electricity substation to be dispensed to The Electricity Network Company Limited.
- Yellow - Denotes gas governor to be dispensed to GTC Pipelines Limited.
- Denotes service wayleave &/or servitude
- Scottish Water servitude

REVISIONS

LEGAL / DPA USE ONLY

ogilvie
HOMES

Ogilvie Homes Ltd, Ogilvie House,
Pirnhall Business Park,
Stirling, FK7 8ES
Tel: 01786 811811 Fax: 01786 816935

PROJECT
Broich Road, Crieff

DRAWING
Phase 4 DPA Plan

SCALE
1:500 (A1)

DATE	JOB No.	DRAWING No.	REV.
11.03.2024	J0115	(LE)104	-
DRAWN BY CMcG			