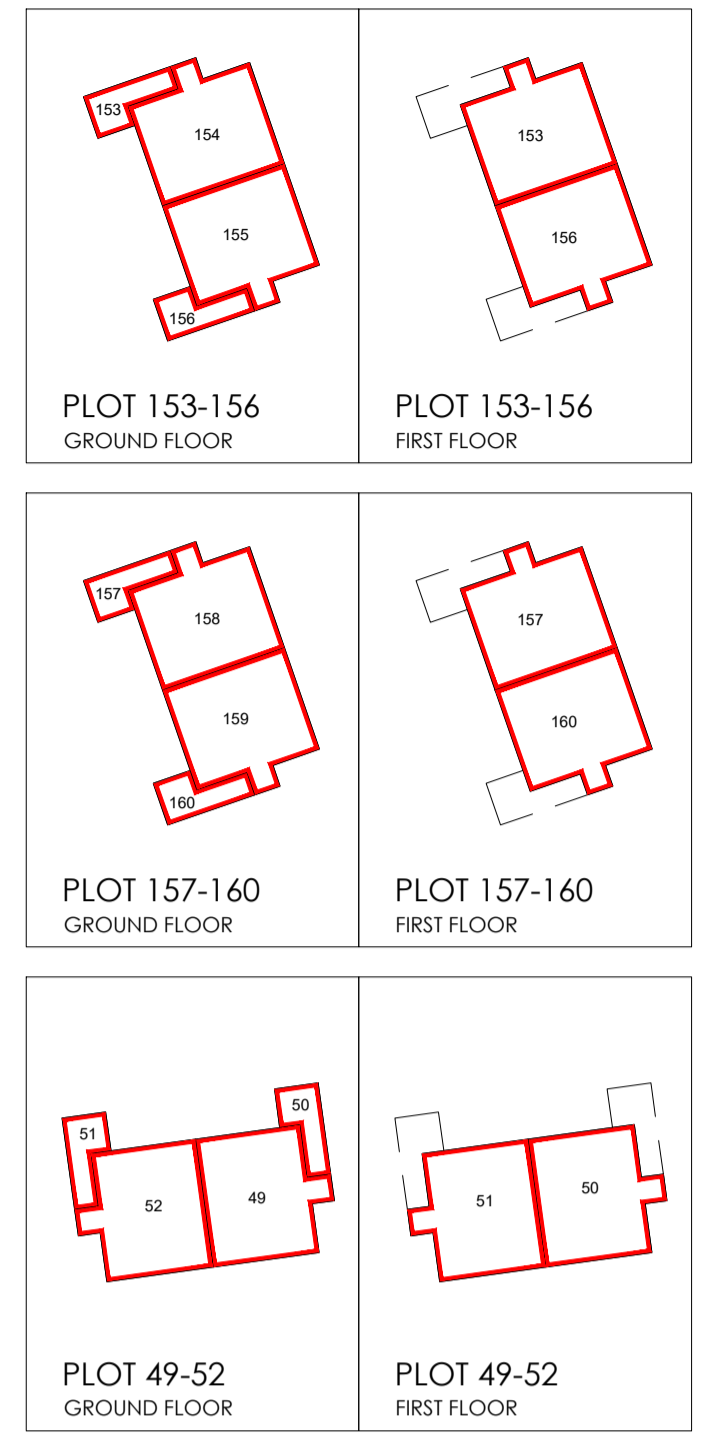
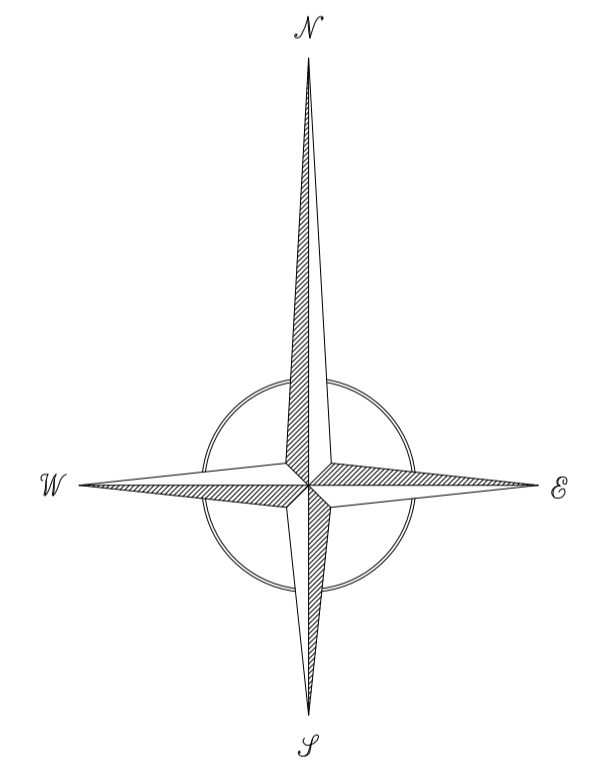




- ### LEGEND
- DENOTES INDIVIDUAL PLOT BOUNDARY.
 - DENOTES SITE BOUNDARY (DARK BLUE)
 - ▨ DENOTES PRIVATE FOOTPATH / LIGHTING MAINTAINED BY THE APPOINTED FACTOR OWNED BY PLOTS 28, 29 + 30 (TINTED RED WITH BLACK DIAGONAL HATCH)
 - ▨ DENOTES PRIVATE FOOTPATH MAINTAINED BY THE APPOINTED FACTOR OWNED BY PLOTS 41, 42, 43 + 44 (TINTED DARK BLUE WITH BLACK CROSS HATCH)
 - ▨ DENOTES PRIVATE FOOTPATH / LIGHTING MAINTAINED BY THE APPOINTED FACTOR OWNED BY PLOTS 41, 42 + 43 (TINTED DARK BLUE WITH BLACK DIAGONAL HATCH)
 - ▨ DENOTES PRIVATE FOOTPATH MAINTAINED BY THE APPOINTED FACTOR OWNED BY PLOTS 47, 48, 49, 50, 51 + 52 (TINTED DARK GREEN WITH BLACK CROSS HATCH)
 - ▨ DENOTES PRIVATE FOOTPATH / LIGHTING MAINTAINED BY THE APPOINTED FACTOR OWNED BY PLOTS 49, 50, 51 + 52 (TINTED LIGHT GREEN WITH BLACK DIAGONAL HATCH)
 - ▨ DENOTES PRIVATE LANDSCAPING MAINTAINED BY THE APPOINTED FACTOR OWNED BY PLOTS 49, 50, 51 + 52 (TINTED LIGHT GREEN WITH BLACK DIAGONAL HATCH)
 - ▨ DENOTES PRIVATE FOOTPATH MAINTAINED BY THE APPOINTED FACTOR OWNED BY PLOTS 56, 57, 58, 59, 60, 61 + 62 (TINTED YELLOW WITH BLACK CROSS HATCH)
 - ▨ DENOTES PRIVATE FOOTPATH / LIGHTING MAINTAINED BY THE APPOINTED FACTOR OWNED BY PLOTS 57, 58, 59, 60 + 61 (TINTED YELLOW WITH BLACK DIAGONAL HATCH)
 - ▨ DENOTES PRIVATE FOOTPATH MAINTAINED BY THE APPOINTED FACTOR OWNED BY PLOTS 63 + 64 (TINTED GREY WITH BLACK CROSS HATCH)
 - ▨ DENOTES PRIVATE FOOTPATH MAINTAINED BY THE APPOINTED FACTOR OWNED BY PLOTS 117, 118, 119, 120, 121 + 122 (TINTED PINK WITH BLACK CROSS HATCH)
 - ▨ DENOTES PRIVATE FOOTPATH / LIGHTING MAINTAINED BY THE APPOINTED FACTOR OWNED BY PLOTS 118, 119, 120 + 121 (TINTED PINK WITH BLACK DIAGONAL HATCH)
 - ▨ DENOTES PRIVATE FOOTPATH / LIGHTING MAINTAINED BY THE APPOINTED FACTOR OWNED BY PLOTS 153, 154, 155, 156, 157, 158, 159 + 160 (TINTED LIGHT BLUE WITH BLACK CROSS HATCH)
 - ▨ DENOTES PRIVATE LANDSCAPING MAINTAINED BY THE APPOINTED FACTOR OWNED BY PLOTS 153, 154, 155, 156, 157, 158, 159 + 160 (TINTED LIGHT BLUE WITH BLACK DIAGONAL HATCH)
 - ▨ DENOTES PRIVATE SHARED ACCESS / PRIVATE LIGHTING (WHERE APPLICABLE) MAINTAINED BY THE APPOINTED FACTOR, OWNED BY PLOTS NOTED BELOW (TINTED ORANGE)
 - A OWNED BY PLOTS 97, 98 AND 99
 - B OWNED BY PLOTS 129, 130 AND 131
 - C OWNED BY PLOTS 1 AND 2
 - DENOTES UTILITY WAYLEAVES



0 METRES 50 100
SCALE



The Development registered under titles DMB99119 & DMB99517 and plots 1 to 52, 79, 87, 88, 93 to 149 & 153 to 171 within have been DPA approved.
The Keeper - 14 April 2025
Keeper for the Registers of Scotland



McLellan Works, Suite 2.01
274 Sauchiehall Street, Glasgow G2 3EH
tel 0141 674 8800
www.cala.co.uk

JOB TITLE
FAULDHEAD

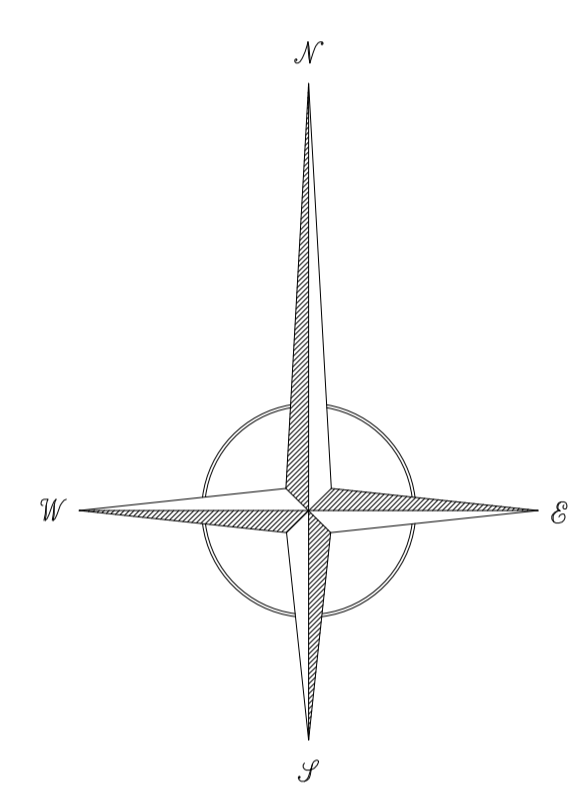
DRAWING TITLE
DPA PLAN

SCALE: 1:1000 SHEET SIZE: A1 DATE: June 23

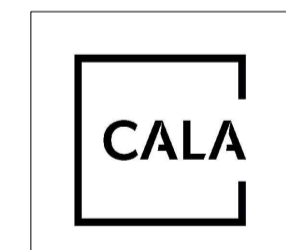
DRAWN BY: MM	PRELIMINARY	FINAL
CHECKED BY:	CENTRAL MASTERED	DEVELOPMENT MASTERED
SITE	159	REV PLOT
MCCOSKER	VER MOD DRG No.	DPA-001 F



- ### LEGEND
- DENOTES SITE BOUNDARY (DARK BLUE)
 - DENOTES FACTORED HEDGE (SOLID LIGHT BLUE LINE)
 - DENOTES ROADS / FOOTPATHS / PARKING TO BE ADOPTED BY THE LOCAL AUTHORITY. (TINTED GREY)
 - DENOTES VERGES TO BE ADOPTED BY THE LOCAL AUTHORITY. MAINTAINED BY FACTOR.
 - DENOTES OPEN SPACE / LANDSCAPING / PLAY AREAS / POND OWNED BY THE RESIDENTS AND MAINTAINED BY THE APPOINTED FACTOR. (TINTED GREEN)
 - DENOTES AREA OF RIVER MAINTAINED BY THE APPOINTED FACTOR. (TINTED LIGHT BLUE)
 - DENOTES PRIVATE FOOTPATHS / DRIVES / LIGHTING / PARKING MAINTAINED BY THE APPOINTED FACTOR. (TINTED MAGENTA)
 - DENOTES AFFORDABLE HOUSING (TINTED BLUE)
 - DENOTES SUDS POND, PUMPING STATION AND ACCESS ROADS ADOPTED BY SCOTTISH WATER. MAINTAINED BY FACTOR. (TINTED PINK)
 - DENOTES SUB STATION AND ACCESS MAINTAINED BY NETWORK OPERATOR. (TINTED YELLOW WITH RED HONEYCOMB OVER)
 - DENOTES PRIVATE FOOTPATH MAINTAINED BY THE APPOINTED FACTOR OWNED BY PLOTS 28, 29, 30 + 31 (TINTED RED WITH BLACK CROSS HATCH)
 - DENOTES PRIVATE FOOTPATH / LIGHTING MAINTAINED BY THE APPOINTED FACTOR OWNED BY PLOTS 28, 29 + 30 (TINTED RED WITH BLACK DIAGONAL HATCH)
 - DENOTES PRIVATE FOOTPATH MAINTAINED BY THE APPOINTED FACTOR OWNED BY PLOTS 41, 42, 43 + 44 (TINTED DARK BLUE WITH BLACK CROSS HATCH)
 - DENOTES PRIVATE FOOTPATH / LIGHTING MAINTAINED BY THE APPOINTED FACTOR OWNED BY PLOTS 41, 42 + 43 (TINTED DARK BLUE WITH BLACK DIAGONAL HATCH)
 - DENOTES PRIVATE FOOTPATH MAINTAINED BY THE APPOINTED FACTOR OWNED BY PLOTS 47, 48, 49, 50, 51 + 52 (TINTED DARK GREEN WITH BLACK CROSS HATCH)
 - DENOTES PRIVATE FOOTPATH / LIGHTING MAINTAINED BY THE APPOINTED FACTOR OWNED BY PLOTS 49, 50, 51 + 52 (TINTED LIGHT GREEN WITH BLACK CROSS HATCH)
 - DENOTES PRIVATE LANDSCAPING MAINTAINED BY THE APPOINTED FACTOR OWNED BY PLOTS 49, 50, 51 + 52 (TINTED LIGHT GREEN WITH BLACK DIAGONAL HATCH)
 - DENOTES PRIVATE FOOTPATH MAINTAINED BY THE APPOINTED FACTOR OWNED BY PLOTS 56, 57, 58, 59, 60, 61 + 62 (TINTED YELLOW WITH BLACK CROSS HATCH)
 - DENOTES PRIVATE FOOTPATH / LIGHTING MAINTAINED BY THE APPOINTED FACTOR OWNED BY PLOTS 57, 58, 59, 60 + 61 (TINTED YELLOW WITH BLACK DIAGONAL HATCH)
 - DENOTES PRIVATE FOOTPATH MAINTAINED BY THE APPOINTED FACTOR OWNED BY PLOTS 63 + 64 (TINTED GREY WITH BLACK CROSS HATCH)
 - DENOTES PRIVATE FOOTPATH MAINTAINED BY THE APPOINTED FACTOR OWNED BY PLOTS 117, 118, 119, 120, 121 + 122 (TINTED PINK WITH BLACK CROSS HATCH)
 - DENOTES PRIVATE FOOTPATH / LIGHTING MAINTAINED BY THE APPOINTED FACTOR OWNED BY PLOTS 118, 119, 120 + 121 (TINTED PINK WITH BLACK DIAGONAL HATCH)
 - DENOTES PRIVATE FOOTPATH / LIGHTING MAINTAINED BY THE APPOINTED FACTOR OWNED BY PLOTS 153, 154, 155, 156, 157, 158, 159 + 160 (TINTED LIGHT BLUE WITH BLACK CROSS HATCH)
 - DENOTES PRIVATE LANDSCAPING MAINTAINED BY THE APPOINTED FACTOR OWNED BY PLOTS 153, 154, 155, 156, 157, 158, 159 + 160 (TINTED LIGHT BLUE WITH BLACK DIAGONAL HATCH)
 - DENOTES PRIVATE SHARED ACCESS / PRIVATE LIGHTING (WHERE APPLICABLE) MAINTAINED BY THE APPOINTED FACTOR. OWNED BY PLOTS NOTED BELOW (TINTED ORANGE)
 - A OWNED BY PLOTS 97, 98 AND 99
 - B OWNED BY PLOTS 129, 130 AND 131
 - C OWNED BY PLOTS 1 AND 2
 - DENOTES UTILITY WAYLEAVES



0 METRES 50 100
SCALE



McLellan Works, Suite 2.01
274 Sauchiehall Street, Glasgow G2 3EH
tel 0141 674 8800
www.cala.co.uk

JOB TITLE
FAULDHEAD

DRAWING TITLE
DMS PLAN

SCALE: 1:1000 SHEET SIZE: A1 DATE: June 23

DRAWN BY: MM	PRELIMINARY	FINAL
CHECKED BY:	CENTRAL MASTERED	DEVELOPMENT MASTERED
SITE	McCOSKER VER MOD DRG No.	REV PLOT
159	DMS-001	I