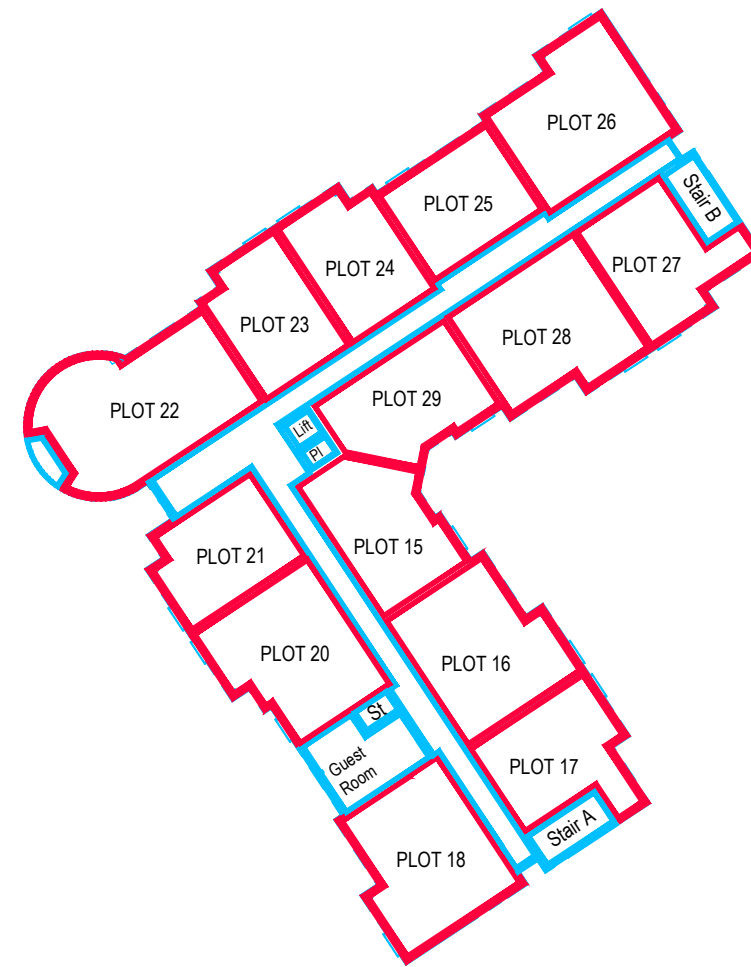


SCALE (METRES)  
0 5 10 15 20

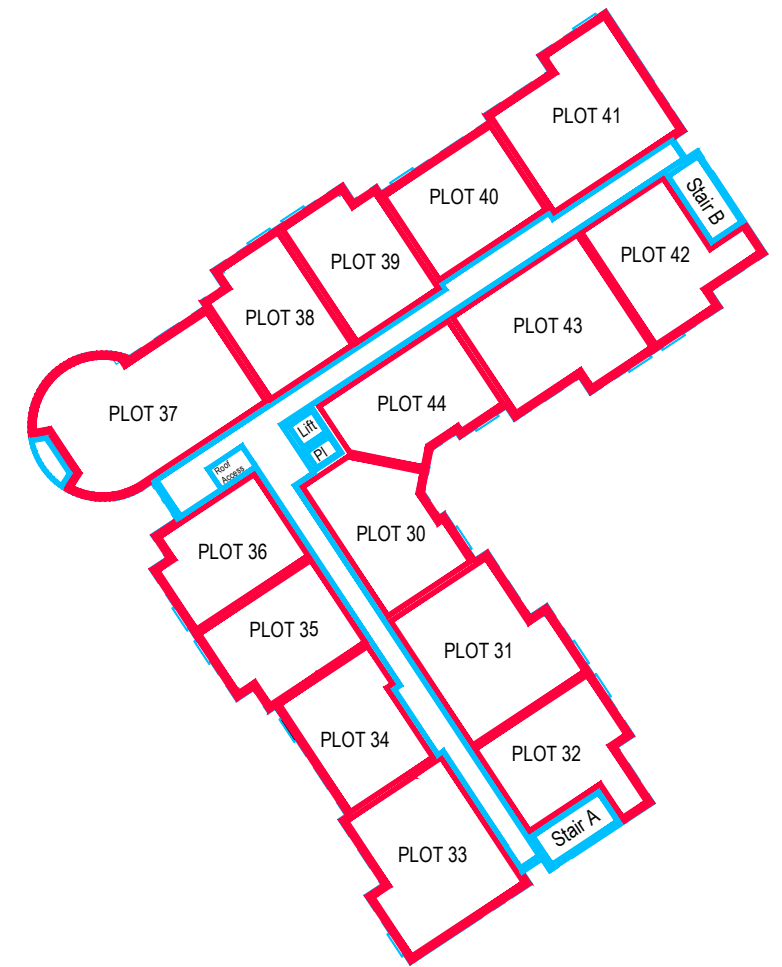


LEGEND

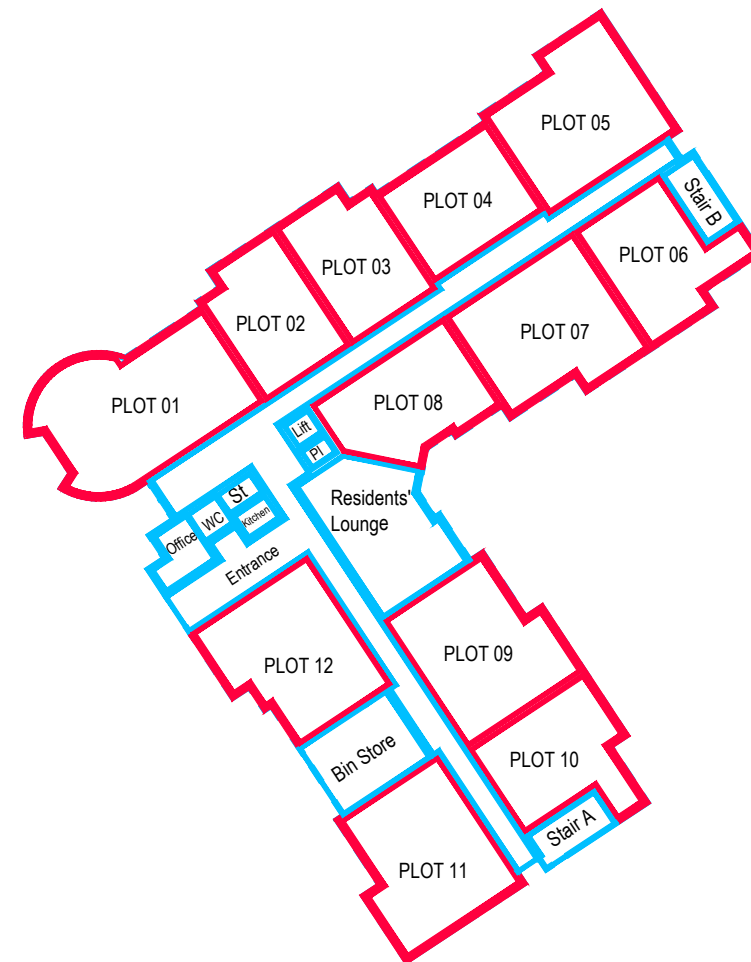
- Site Boundary
- Common Parts Parking
- Common Parts
- Common Parts within the building



FIRST FLOOR



SECOND FLOOR



GROUND FLOOR

The Development registered under title ELN20102 and Flats 1 to 12, 15 to 18 and 20 to 44 within have been DPA approved by:

*D. McIntyre - 11th July 2017*

Danielle McIntyre (DPA Officer)



**McCarthy & Stone**  
The UK's leading retirement housebuilder

11000 Academy Park,  
Gower Street  
Pollokshields,  
Glasgow, G51 1PR  
Telephone: (0141) 420 8329  
Fax : (0141) 427 5774  
Scale 1:500 @ A3

HEUGH ROAD, NORTH BERWICK - DEVELOPMENT PLAN APPROVAL