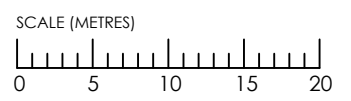
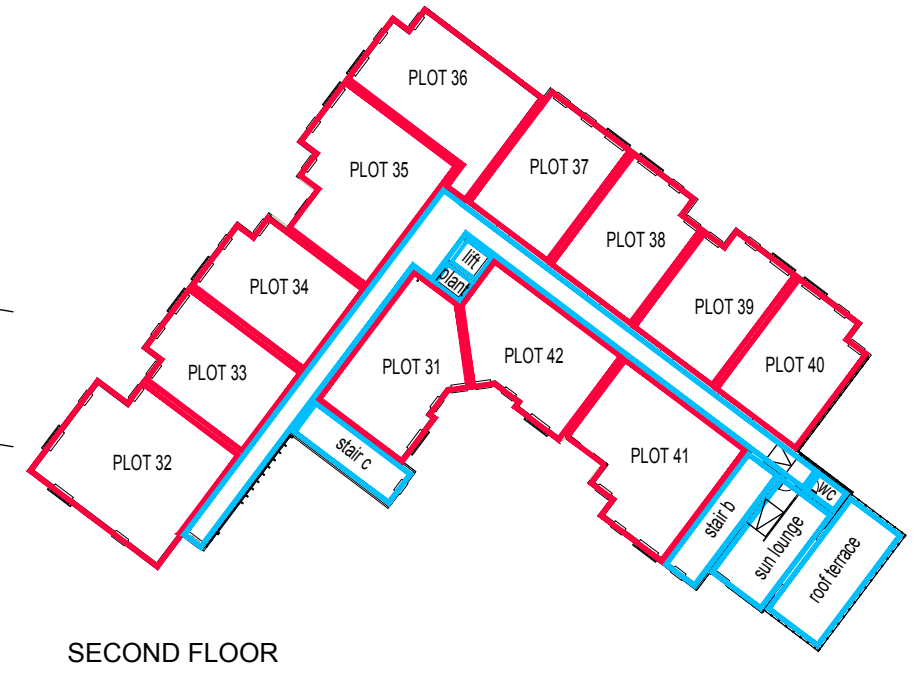


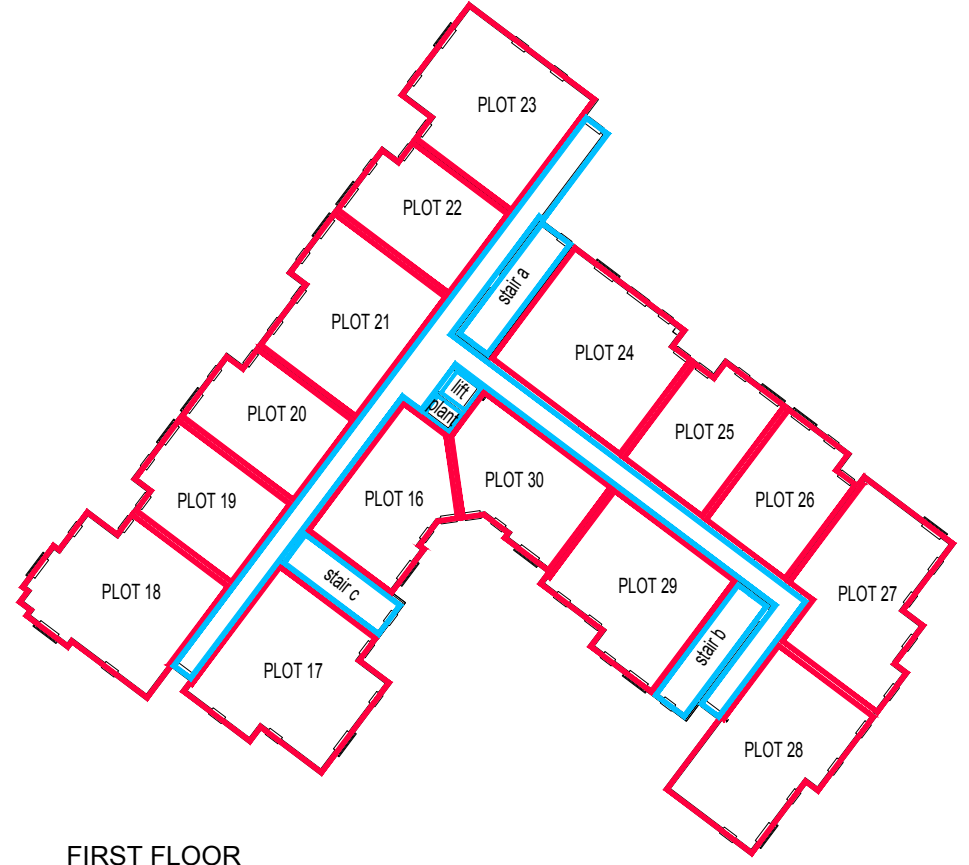
- LEGEND**
- Site Boundary
 - Common Parts Parking
 - Common Parts
 - Common Parts within the building



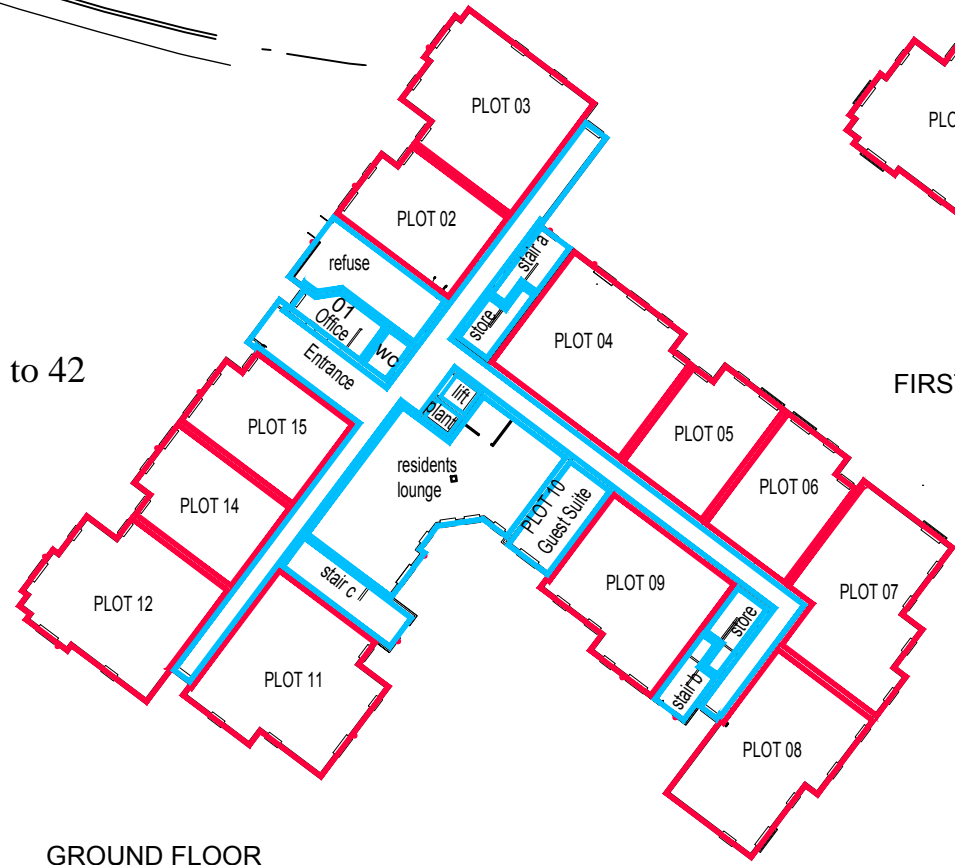
The Development registered under title FFE82070 and plots 2 to 9, 11,12,14 to 42 within the unique DPA identifiers, FFE82070, FFE82070 - 1ST FLR and FFE82070- 2ND FLR have been DPA approved by :
Craig McFadden - 23 May 2017
 Craig McFadden (DPA Officer)



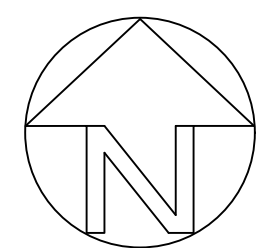
SECOND FLOOR



FIRST FLOOR



GROUND FLOOR



McCarthy & Stone
 The UK's leading retirement housebuilder

11000 Academy Park,
 Gower Street
 Pollokshields,
 Glasgow, G51 1PR
 Telephone: (0141) 420 8329
 Fax : (0141) 427 5774
 Scale 1:500 @ A3

PITTENWEEM ROAD, ANSTRUTHER - DEVELOPMENT PLAN APPROVAL