



DPA LEGEND

- BLOCK 1 - SCIENNES APARTMENTS (SA)
- SCIENNES PHARMACY (SP)
- BLOCK 2 - MILLERFIELD TOWNHOUSES (MT)
- BLOCK 3 - MILLERFIELD APARTMENTS (MA)
- BLOCK 4 - RILLBANK TOWNHOUSES (RT)
- BLOCK 5 - RILLBANK EAST APARTMENTS (REA)
- BLOCK 6 - RILLBANK WEST APARTMENTS (RWA)
- SHARED BOUNDARY - PLOTS 55 AND 60
- SHARED BOUNDARY - PLOTS 46 AND 47
- SHARED BOUNDARY - PLOTS 46 AND 49
- SHARED BOUNDARY - COMMON TO MT / MA / RT / REA BLOCKS
- BLOCK OUTLINE
- INDIVIDUAL PLOT BOUNDARY
- PATH/ ACCESS COMMON TO MT / MA / RT / REA BLOCKS
- EXTERNAL PLANT COMMON TO MA AND REA BLOCKS

TO BE ADDED:

SERVICE STRIPS IN PRIVATE GARDENS

ALL SERVICES AND ROUTES
(DRAINAGE/WATER/SPEN/SPRINKLER/OPENREACH)

P07	Date 43	AR	Updated to comments
P06	07/03/24	AR	Boundary Added
P05	20/02/24	AR	Lot 03 Boundary Extents Update
P04	07/02/23	AR	Updated to suit latest landscaping plans
P03	18/01/24	AR	Updated as Noted
P02	11/12/23	AR	Updated to comments
P01	see title	-	First issue
Rev	Date	By	Notes

INFORMATION

General Notes:

- This drawing is copyright, reserved and remains the property of Fletcher Joseph Architects.
- All levels and dimensions are to be checked on site by the contractor prior to fabrication, and any discrepancies must be reported immediately to the Architect.
- All dimensions are to be read off this drawing and NOT scaled.
- All work to be executed in strict accordance with the by-laws and regulations of the local authorities.
- All work to conform to applicable codes of the British Standards.
- Where indicated/required, all drawings are to be read in conjunction with all other documents issued by Fletcher Joseph and/or other professions.

1:500

0 5 10 15 25 m

N

FLETCHER JOSEPH ASSOCIATES
Architects

5 Millar Place • Edinburgh • EH10 5HJ
T: 0131 447 5000
E: admin@fletcherjoseph.com
W: www.fletcherjoseph.com

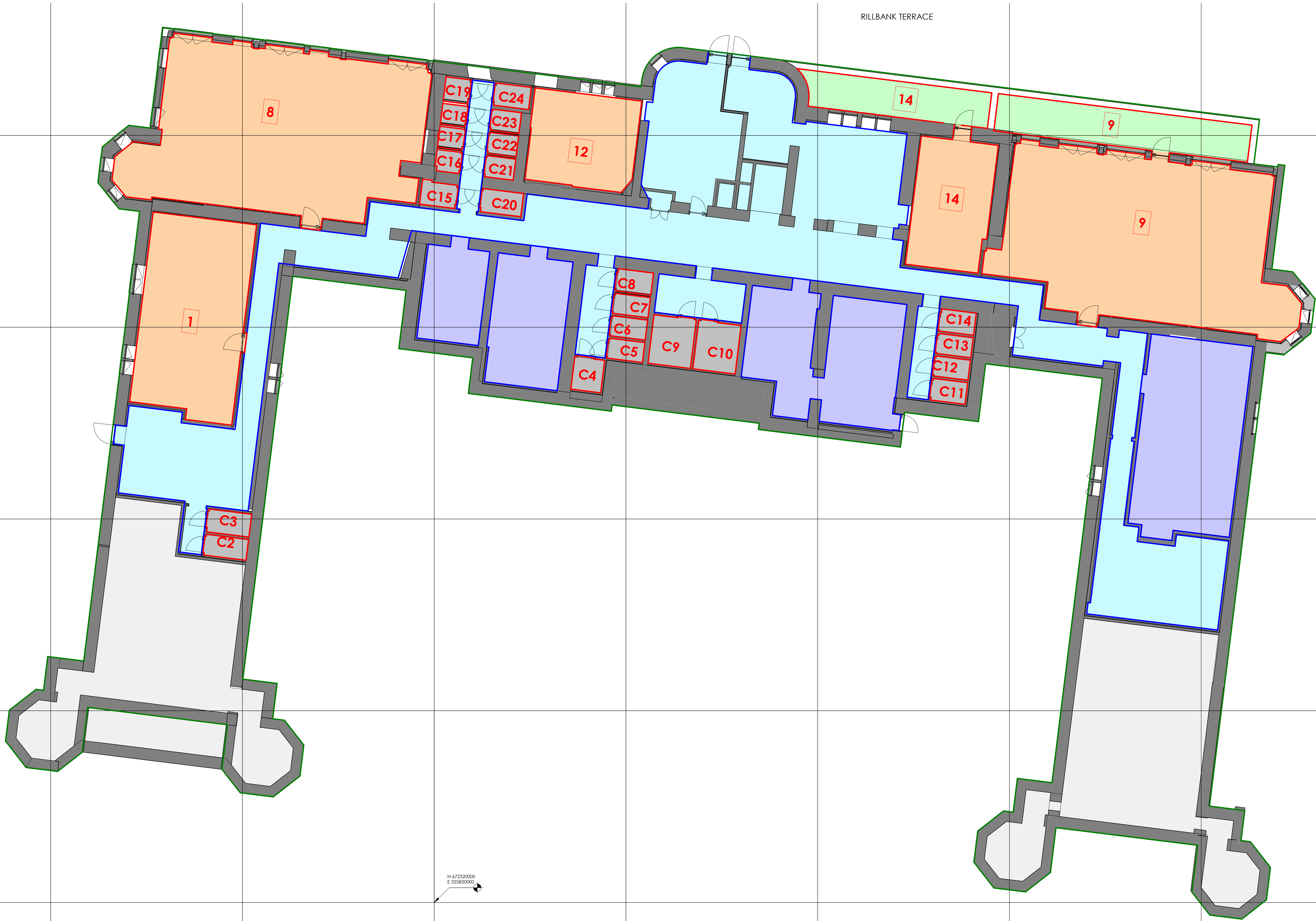
Client	SQUARE & CRESCENT		
Project	Royal Hospital for Sick Children Sciennes Road Edinburgh, EH9 1LF		
Title	Site Development Plan DPA Plan Royal Meadows		
Date	Scale @ A1	Last Revision	
03/11/23	1:500	Date 43	
Drawn By	Checked By	Revised By	
AR	FJA	AR	
Drawing No.	Rev		
22785-FJA-ZZ-ZZ-DR-A-0090	P07		

The Development registered under title
MID234683 and plots 1 to 38 within have
been DPA approved.

The Keeper – 18 November 2024

Keeper for the Registers of Scotland

- Notes**
- Landscape in abeyance, TBC by OPEN - S&C
 - Gridlines imported from OS Map Licence number 100022432



- Legend**
- Private plots
 - Private balconies
 - Private gardens / Terraces
 - Private cellar
 - Courtyard car parking space
 - Shared landscaping
 - Stair Common Parts
 - Plant room
 - Shared Parking Courtyard
 - Common footpath
 - Block boundary
 - Double height space
 - Area not included in the current floor plan view

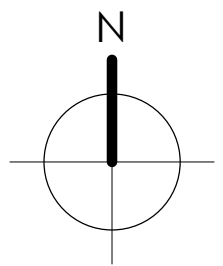
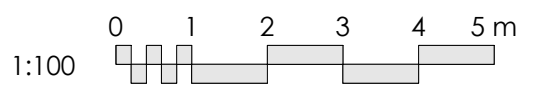
Notes

- Gridlines imported from OS Map Licence number 100022432

P06	13.11.24	JC	Changed as per Burness Paul comments
P05	02.04.24	JC	Updated with Registers comments
P04	13.03.24	JC	Updated with S&C comments
P03	26.02.24	JC	Updated as per BP comments
P02	19.02.24	JC	Updated as per BP comments
P01	see dwg	—	Information issue
Rev	Date	By	Notes

INFORMATION

- General Notes:**
- This drawing is copyright, reserved and remains the property of Fletcher Joseph Architects.
 - All levels and dimensions are to be checked on site by the contractor prior to fabrication, and any discrepancies must be reported immediately to the Architect.
 - All dimensions are to be read off this drawing and NOT scaled.
 - All work to be executed in strict accordance with the bylaws and regulations of the local authorities.
 - All work to conform to applicable codes of the British Standards.
 - Where indicated/required, all drawings are to be read in conjunction with all other documents issued by Fletcher Joseph and/or other professions.



FLETCHER JOSEPH ASSOCIATES
Architects

5 Millar Place • Edinburgh • EH10 5HJ
T: 0131 447 5000
E: admin@fletcherjoseph.com
W: www.fletcherjoseph.com

Client

SQUARE & CRESCENT

Project
Royal Hospital for Sick Children

Title
DPA plan -Lower Ground Floor

Hospital Building (Lot 01)

Date	Scale @ A1	Last Revision
07.02.24	1:100	13.11.24
Drawn By	Checked By	Revised By
AB	JC	JC

Drawing No.	Rev
22785-FJA-HB-LG-DR-A-0050	P06

HBLG



Legend

- Private plots
- Private balconies
- Private gardens / Terraces
- Private cellar
- Courtyard car parking space
- Shared landscaping
- Stair Common Parts
- Plant room
- Shared Parking Courtyard
- Common footpath
- Block boundary
- Double height space
- Area not included in the current floor plan view

Notes

- Gridlines imported from OS Map Licence number 100022432

General Notes:

- This drawing is copyright, reserved and remains the property of Fletcher Joseph Architects.
- All levels and dimensions are to be checked on site by the contractor prior to fabrication, and any discrepancies must be reported immediately to the Architect.
- All dimensions are to be read off this drawing and NOT scaled.
- All work to be executed in strict accordance with the bylaws and regulations of the local authorities.
- All work to conform to applicable codes of the British Standards.
- Where indicated/required, all drawings are to be read in conjunction with all other documents issued by Fletcher Joseph and/or other professions.

Information

1:100

N

FLETCHER JOSEPH ASSOCIATES
Architects

5 Millar Place • Edinburgh • EH10 5HJ
T: 0131 447 5000
E: admin@fletcherjoseph.com
W: www.fletcherjoseph.com

Client
SQUARE & CRESCENT

Project
Royal Hospital for Sick Children

Title
DPA plan - Ground Floor

Date	Scale @ A1	Last Revision
26.10.23	1:100	13.11.24
Drawn By JC	Checked By AR	Revised By JC
Drawing No. 22785-FJA-HB-00-DR-A-0051	Rev P07	

HB 00



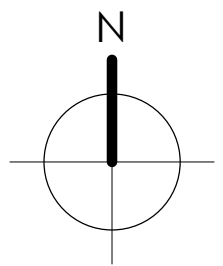
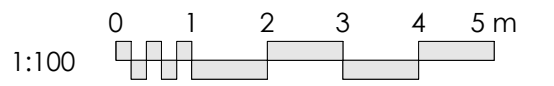
- Legend**
- Private plots
 - Private balconies
 - Private gardens / Terraces
 - Private cellar
 - Courtyard car parking space
 - Shared landscaping
 - Stair Common Parts
 - Plant room
 - Shared Parking Courtyard
 - Common footpath
 - Block boundary
 - Double height space
 - Area not included in the current floor plan view

- Notes**
- Gridlines imported from OS Map Licence number 100022432

P03	13.11.24	JC	Changed as per Burness Paul comments
P02	13.03.24	JC	Updated with S&C comments
P01	see dwg	—	Information issue
Rev	Date	By	Notes

INFORMATION

- General Notes:**
- This drawing is copyright, reserved and remains the property of Fletcher Joseph Architects.
 - All levels and dimensions are to be checked on site by the contractor prior to fabrication, and any discrepancies must be reported immediately to the Architect.
 - All dimensions are to be read off this drawing and NOT scaled.
 - All work to be executed in strict accordance with the bylaws and regulations of the local authorities.
 - All work to conform to applicable codes of the British Standards.
 - Where indicated/required, all drawings are to be read in conjunction with all other documents issued by Fletcher Joseph and/or other professions.



FLETCHER JOSEPH ASSOCIATES
Architects

5 Millar Place • Edinburgh • EH10 5HJ
T: 0131 447 5000
E: admin@fletcherjoseph.com
W: www.fletcherjoseph.com

Client
SQUARE & CRESCENT

Project
Royal Hospital for Sick Children

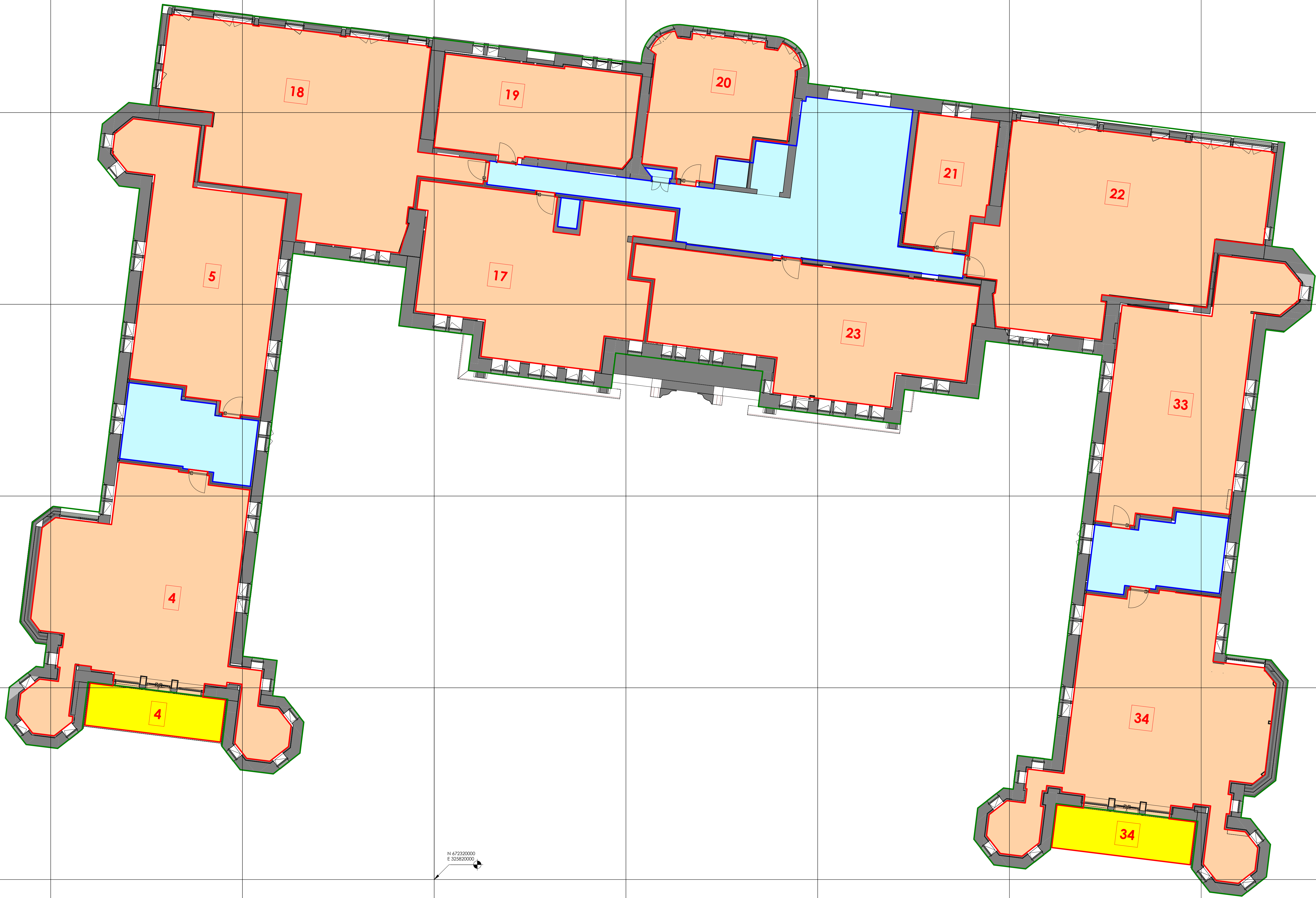
Title
DPA plan - Ground Floor Mezzanine

Hospital Building (Lot 01)

Date	Scale @ A1	Last Revision
07.02.24	1:100	13.11.24
Drawn By	Checked By	Revised By
AB	JC	JC

Drawing No.	Rev
22785-FJA-HB-M0-DR-A-0052	P03

HB M0



- Legend**
- Private plots
 - Private balconies
 - Private gardens / Terraces
 - Private cellar
 - Courtyard car parking space
 - Shared landscaping
 - Stair Common Parts
 - Plant room
 - Shared Parking Courtyard
 - Common footpath
 - Block boundary
 - Double height space
 - Area not included in the current floor plan view

Notes

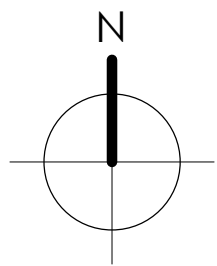
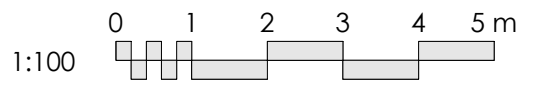
- Gridlines imported from OS Map Licence number 100022432

P04	13.11.24	JC	Changed as per Burness Paul comments
P03	13.03.24	JC	Updated with S&C comments
P02	19.02.24	JC	Updated as per BP comments
P01	see dwg	--	Information issue
Rev	Date	By	Notes

INFORMATION

General Notes:

- This drawing is copyright, reserved and remains the property of Fletcher Joseph Architects.
- All levels and dimensions are to be checked on site by the contractor prior to fabrication, and any discrepancies must be reported immediately to the Architect.
- All dimensions are to be read off this drawing and NOT scaled.
- All work to be executed in strict accordance with the bylaws and regulations of the local authorities.
- All work to conform to applicable codes of the British Standards.
- Where indicated/required, all drawings are to be read in conjunction with all other documents issued by Fletcher Joseph and/or other professions.



FLETCHER JOSEPH ASSOCIATES
Architects

5 Millar Place • Edinburgh • EH10 5HJ
T: 0131 447 5000
E: admin@fletcherjoseph.com
W: www.fletcherjoseph.com

Client
SQUARE & CRESCENT

Project
Royal Hospital for Sick Children

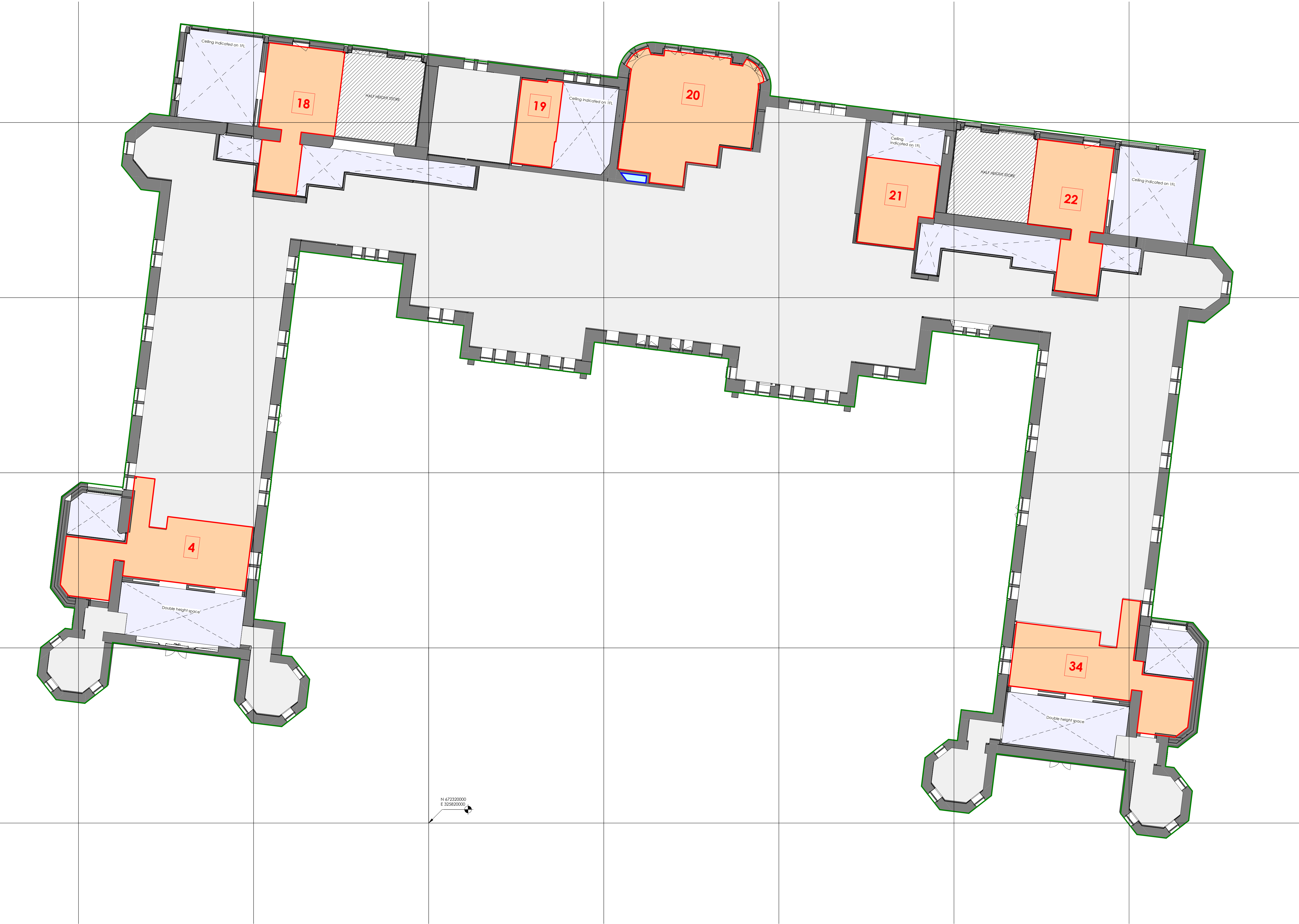
Title
DPA plan - 1st Floor

Hospital Building (Lot 01)

Date	Scale @ A1	Last Revision
07.02.24	1:100	13.11.24
Drawn By	Checked By	Revised By
AB	JC	JC

Drawing No.	Rev
22785-FJA-HB-01-DR-A-0053	P04

HB01



Legend

- Private plots
- Private balconies
- Private gardens / Terraces
- Private cellar
- Courtyard car parking space
- Shared landscaping
- Stair Common Parts
- Plant room
- Shared Parking Courtyard
- Common footpath
- Block boundary
- Double height space
- Area not included in the current floor plan view

Notes

- Gridlines imported from OS Map Licence number 100022432

General Notes:

- This drawing is copyright, reserved and remains the property of Fletcher Joseph Architects.
- All levels and dimensions are to be checked on site by the contractor prior to fabrication, and any discrepancies must be reported immediately to the Architect.
- All dimensions are to be read off this drawing and NOT scaled.
- All work to be executed in strict accordance with the bylaws and regulations of the local authorities.
- All work to conform to applicable codes of the British Standards.
- Where indicated/required, all drawings are to be read in conjunction with all other documents issued by Fletcher Joseph and/or other professions.

0 1 2 3 4 5 m

1:100

N

FLETCHER JOSEPH ASSOCIATES
Architects

5 Millar Place • Edinburgh • EH10 5HJ

T: 0131 447 5000
E: admin@fletcherjoseph.com
W: www.fletcherjoseph.com

Client

SQUARE & CRESCENT

Project

Royal Hospital for Sick Children

Title

DPA plan - 1st Floor Mezzanine

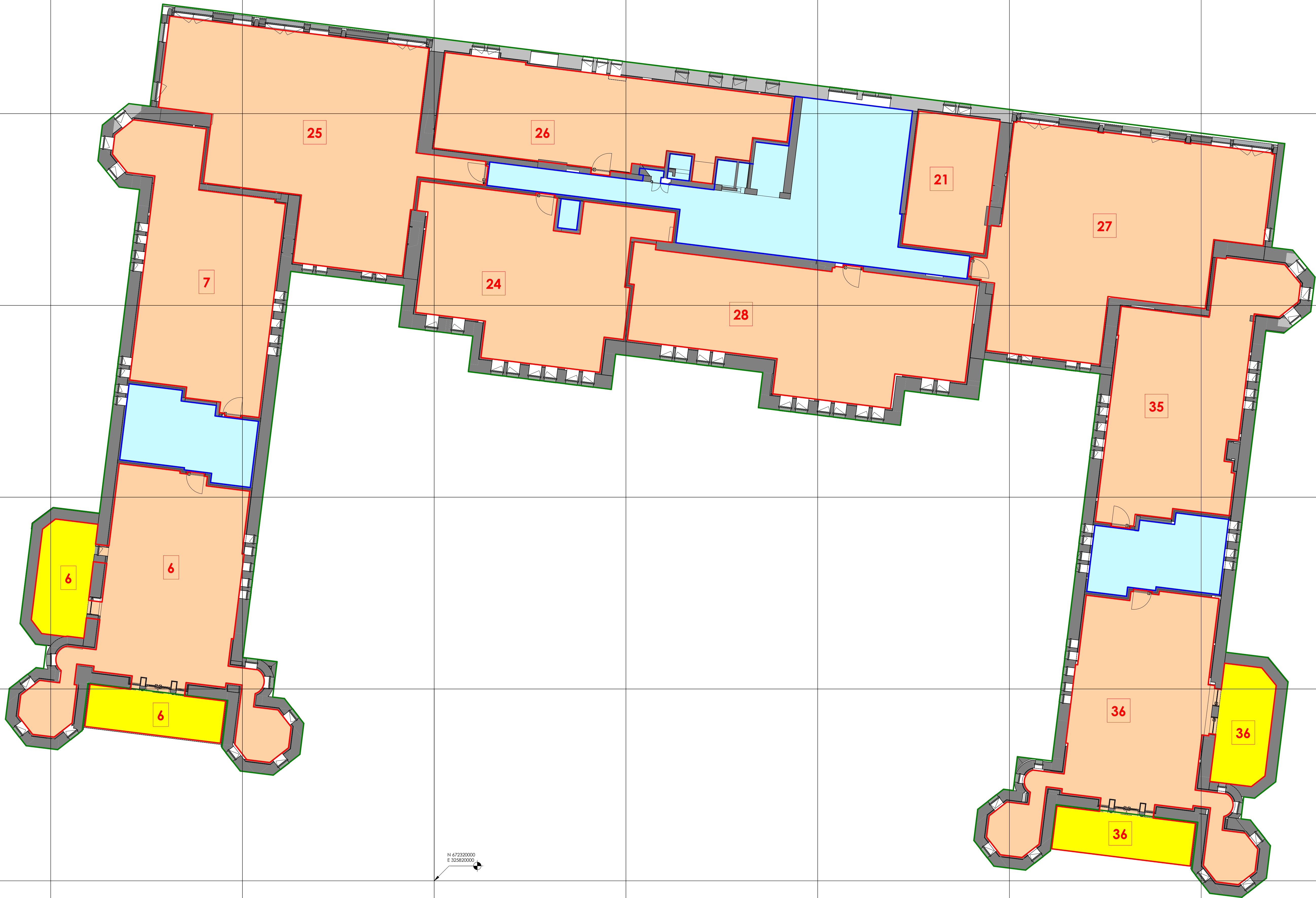
Hospital Building (Lot 01)

Date	Scale @ A1	Last Revision
07.02.24	1:100	13.11.24
Drawn By	Checked By	Revised By
AB	JC	JC

Drawing No. 22785-FJA-HB-M1-DR-A-0054

Rev P03

HBM1



- Legend**
- Private plots
 - Private balconies
 - Private gardens / Terraces
 - Private cellar
 - Courtyard car parking space
 - Shared landscaping
 - Stair Common Parts
 - Plant room
 - Shared Parking Courtyard
 - Common footpath
 - Block boundary
 - Double height space
 - Area not included in the current floor plan view

Notes

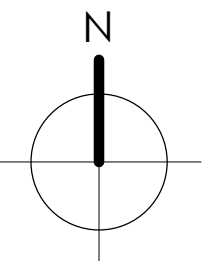
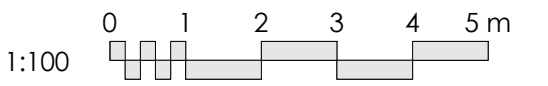
- Gridlines imported from OS Map Licence number 100022432

P04	13.11.24	JC	Changed as per Burness Paul comments
P03	13.03.24	JC	Updated with S&C comments
P02	19.02.24	JC	Updated as per BP comments
P01	see dwg	—	Information issue
Rev	Date	By	Notes

INFORMATION

General Notes:

- This drawing is copyright, reserved and remains the property of Fletcher Joseph Architects.
- All levels and dimensions are to be checked on site by the contractor prior to fabrication, and any discrepancies must be reported immediately to the Architect.
- All dimensions are to be read off this drawing and NOT scaled.
- All work to be executed in strict accordance with the by-laws and regulations of the local authorities.
- All work to conform to applicable codes of the British Standards.
- Where indicated/required, all drawings are to be read in conjunction with all other documents issued by Fletcher Joseph and/or other professions.



FLETCHER JOSEPH ASSOCIATES
Architects

5 Millar Place • Edinburgh • EH10 5HJ
T: 0131 447 5000
E: admin@fletcherjoseph.com
W: www.fletcherjoseph.com

Client

SQUARE & CRESCENT

Project

Royal Hospital for Sick Children

Title

DPA plan - 2nd Floor

Hospital Building (Lot 01)

Date	Scale @ A1	Last Revision
07.02.24	1:100	13.11.24
Drawn By	Checked By	Revised By
AB	JC	JC

Drawing No.	Rev
22785-FJA-HB-02-DR-A-0055	P04

HB02



HBM2

Legend

- Private plots
- Private balconies
- Private gardens / Terraces
- Private cellar
- Courtyard car parking space
- Shared landscaping
- Stair Common Parts
- Plant room
- Shared Parking Courtyard
- Common footpath
- Block boundary
- Double height space
- Area not included in the current floor plan view

Notes

- Gridlines imported from OS Map Licence number 100022432

P03 13.11.24 JC Changed as per Burness Paul comments
P02 13.03.24 JC Updated with S&C comments
P01 see dwg -- Information issue

Rev	Date	By	Notes
-----	------	----	-------

INFORMATION

General Notes:

- This drawing is copyright, reserved and remains the property of Fletcher Joseph Architects.
- All levels and dimensions are to be checked on site by the contractor prior to fabrication, and any discrepancies must be reported immediately to the Architect.
- All dimensions are to be read off this drawing and NOT scaled.
- All work to be executed in strict accordance with the by-laws and regulations of the local authorities.
- All work to conform to applicable codes of the British Standards.
- Where indicated/required, all drawings are to be read in conjunction with all other documents issued by Fletcher Joseph and/or other professions.

0 1 2 3 4 5 m

1:100

N

FLETCHER JOSEPH ASSOCIATES
Architects

5 Millar Place • Edinburgh • EH10 5HJ
T: 0131 447 5000
E: admin@fletcherjoseph.com
W: www.fletcherjoseph.com

Client

SQUARE & CRESCENT

Project

Royal Hospital for Sick Children

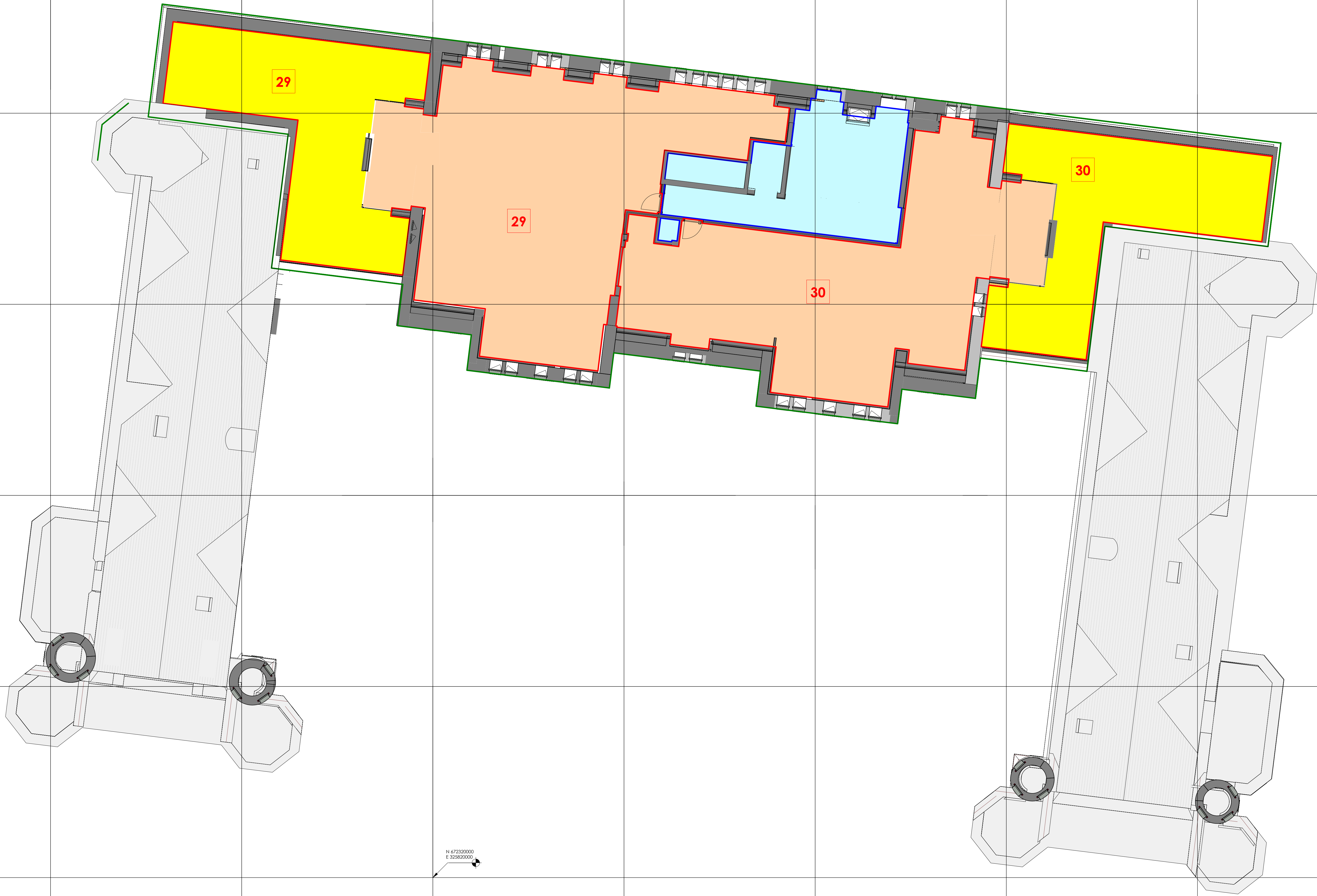
Title

DPA plan -2nd Floor Mezzanine

Hospital Building (Lot 01)

Date	Scale @ A1	Last Revision
07.02.24	1:100	13.11.24
Drawn By	Checked By	Revised By
AB	JC	JC

Drawing No.	Rev
22785-FJA-HB-M2-DR-A-0056	P03



- Legend**
- Private plots
 - Private balconies
 - Private gardens / Terraces
 - Private cellar
 - Courtyard car parking space
 - Shared landscaping
 - Stair Common Parts
 - Plant room
 - Shared Parking Courtyard
 - Common footpath
 - Block boundary
 - Double height space
 - Area not included in the current floor plan view

Notes

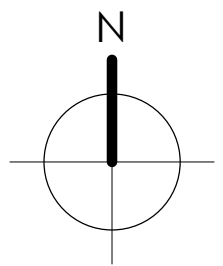
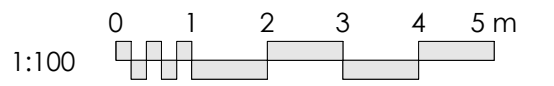
- Gridlines imported from OS Map Licence number 100022432

P04	13.11.24	JC	Changed as per Burness Paul comments
P03	13.03.24	JC	Updated with S&C comments
P02	19.02.24	JC	Updated as per BP comments
P01	see dwg	—	Information issue
Rev	Date	By	Notes

INFORMATION

General Notes:

- This drawing is copyright, reserved and remains the property of Fletcher Joseph Architects.
- All levels and dimensions are to be checked on site by the contractor prior to fabrication, and any discrepancies must be reported immediately to the Architect.
- All dimensions are to be read off this drawing and NOT scaled.
- All work to be executed in strict accordance with the bylaws and regulations of the local authorities.
- All work to conform to applicable codes of the British Standards.
- Where indicated/required, all drawings are to be read in conjunction with all other documents issued by Fletcher Joseph and/or other professions.



FLETCHER JOSEPH ASSOCIATES
Architects

5 Millar Place • Edinburgh • EH10 5HJ
T: 0131 447 5000
E: admin@fletcherjoseph.com
W: www.fletcherjoseph.com

Client

SQUARE & CRESCENT

Project
Royal Hospital for Sick Children

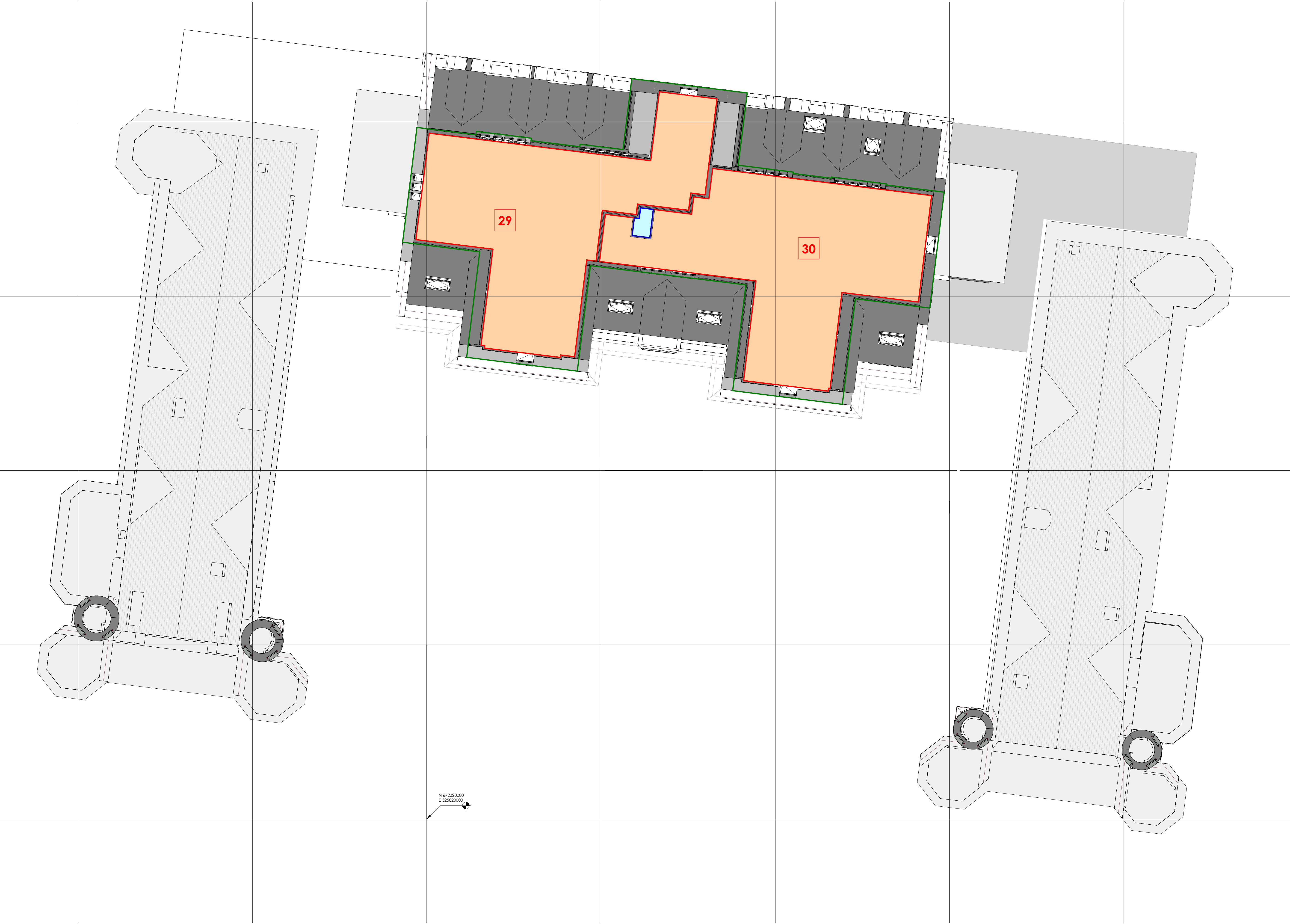
Title
DPA plan - 3rd Floor

Hospital Building (Lot 01)

Date	Scale @ A1	Last Revision
07.02.24	1:100	13.11.24
Drawn By	Checked By	Revised By
AB	JC	JC

Drawing No.	Rev
22785-FJA-HB-03-DR-A-0057	P04

HB03



Legend

- Private plots
- Private balconies
- Private gardens / Terraces
- Private cellar
- Courtyard car parking space
- Shared landscaping
- Stair Common Parts
- Plant room
- Shared Parking Courtyard
- Common footpath
- Block boundary
- Double height space
- Area not included in the current floor plan view

Notes

- Gridlines imported from OS Map Licence number 100022432

P03	13.03.24	JC	Updated with S&C comments
P02	19.02.24	JC	Updated as per BP comments
P01	see dwg	-	Information issue
Rev	Date	By	Notes

INFORMATION

General Notes:

- This drawing is copyright, reserved and remains the property of Fletcher Joseph Architects.
- All levels and dimensions are to be checked on site by the contractor prior to fabrication, and any discrepancies must be reported immediately to the Architect.
- All dimensions are to be read off this drawing and NOT scaled.
- All work to be executed in strict accordance with the by-laws and regulations of the local authorities.
- All work to conform to applicable codes of the British Standards.
- Where indicated/required, all drawings are to be read in conjunction with all other documents issued by Fletcher Joseph and/or other professions.

0 1 2 3 4 5 m

1:100

N

FLETCHER JOSEPH ASSOCIATES
Architects

5 Millar Place • Edinburgh • EH10 5HJ
T: 0131 447 5000
E: admin@fletcherjoseph.com
W: www.fletcherjoseph.com

Client

SQUARE & CRESCENT

Project

Royal Hospital for Sick Children

Title

DPA plan - 4th Floor

Hospital Building (Lot 01)		
Date	Scale @ A1	Last Revision
07.02.24	1:100	13.03.24
Drawn By	Checked By	Revised By
AB	JC	JC
Drawing No.	Rev	
22785-FJA-HB-04-DR-A-0058	P03	

HB04