

- SITE BOUNDARY
- SUB-STATION
- COMMON PATH WITH ACCESS RIGHTS AND SERVITUDE
- ADOPTED ROADS AND PATHS (MAINTAINED BY COUNCIL)
- ADOPTED ROADS AND PATHS - CITY CAR CLUB (MAINTAINED BY COUNCIL)
- ADOPTED SURFACE (LANDSCAPING MAINTAINED BY FACTOR)
- ADOPTED VERGE/ FUTURE ROADS AND PATHS (LANDSCAPING MAINTAINED BY FACTOR)
- ADOPTED VERGE/ FUTURE PATH (LANDSCAPING MAINTAINED BY FACTOR)
- COMMON OPEN SPACE (MAINTAINED BY FACTOR)
- PRIVATE BALCONIES ABOVE COMMON GROUND AND/ OR SHARED PATHS
- SHARED RESIDENTIAL PARKING (MAINTAINED BY FACTOR)
- SHARED RESIDENTIAL PARKING ACCESS (MAINTAINED BY FACTOR)
- GROUND LEVEL PEND (MAINTAINED BY FACTOR)
- SHARED FOOTPATHS (MAINTAINED BY FACTOR)
- SHARED FOOTPATHS WITH COMMERCIAL ACCESS OVER (MAINTAINED BY FACTOR)
- WATER STORE (MAINTAINED BY FACTOR)
- COMMERCIAL BIN STORE PATH (MAINTAINED BY PROPRIETOR)
- COMMERCIAL BIN STORE (MAINTAINED BY PROPRIETOR)
- RSL CYCLE STORE (MAINTAINED BY RSL)
- RSL BIN STORE (MAINTAINED BY RSL)

WARNING TO HOUSE-PURCHASERS
PROPERTY MISDESCRIPTIONS ACT 1991

BUYERS ARE WARNED THAT THIS IS A WORKING DRAWING AND IS NOT INTENDED TO BE TREATED AS DESCRIPTIVE MATERIAL DESCRIBING IN RELATION TO ANY PARTICULAR PROPERTY OR DEVELOPMENT, ANY OF THE SPECIFIED MATTERS PRESCRIBED BY ANY ORDER MADE UNDER THE ABOVE ACT. THE CONTENTS OF THIS DRAWING MAY BE SUBJECT TO CHANGE AT ANY TIME AND ALTERATIONS AND VARIATIONS CAN OCCUR DURING THE PROGRESS OF THE WORKS WITHOUT REVISION OF DRAWING. CONSEQUENTLY THE LAYOUT, FORM, CONTENT AND DIMENSIONS OF THE FINISHED CONSTRUCTION MAY DIFFER MATERIALLY FROM THOSE SHOWN. NOR DO THE CONTENTS OF THIS DRAWING CONSTITUTE A CONTRACT, PART OF ANY CONTRACT OR WARRANTY.

The Development registered under title MID212511 and plots 71, 72, 77, 80, 81, 83 to 86, 90, 92, 93, 98 and 106 to 212 within have been DPA approved.

The Keeper - 04 January 2024

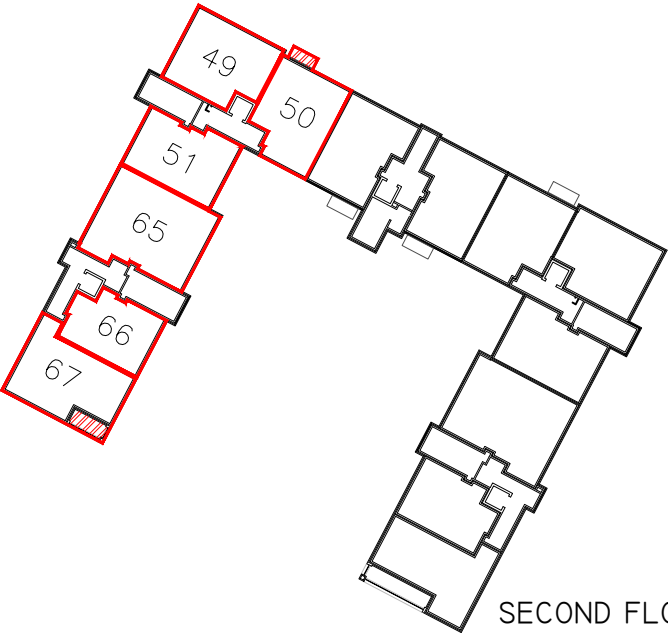
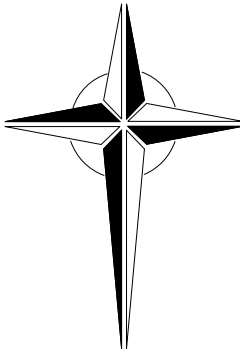
Keeper for the Registers of Scotland



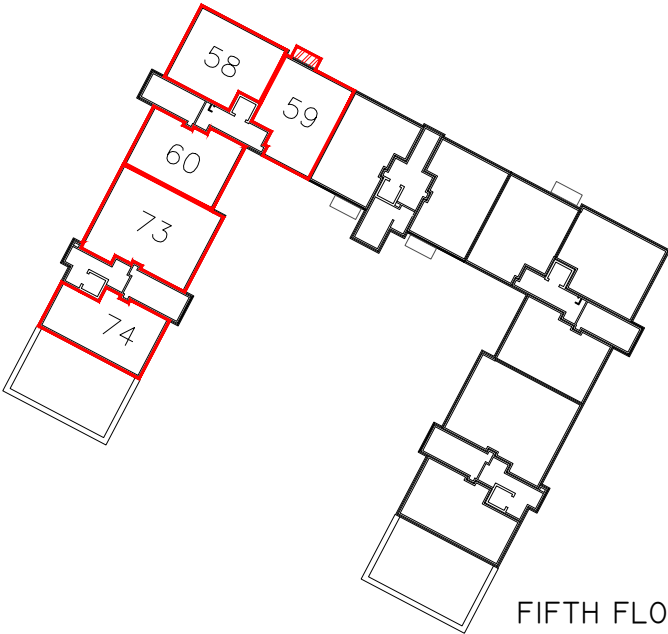
DEVELOPMENT		BATH ROAD EDINBURGH	
TITLE		DEVELOPMENT PLAN APPROVAL	
SCALES	1:1250@A3	DRG. No.	
DATE	MAY'22		H7821/DPA/02'B

BUYERS ARE WARNED THAT THIS IS A WORKING DRAWING AND IS NOT INTENDED TO BE TREATED AS DESCRIPTIVE MATERIAL DESCRIBING IN RELATION TO ANY PARTICULAR PROPERTY OR DEVELOPMENT, ANY OF THE SPECIFIED MATTERS PRESCRIBED BY ANY ORDER MADE UNDER THE ABOVE ACT. THE CONTENTS OF THIS DRAWING MAY BE SUBJECT TO CHANGE AT ANY TIME AND ALTERATIONS AND VARIATIONS CAN OCCUR DURING THE PROGRESS OF THE WORKS WITHOUT REVISION OF DRAWING. CONSEQUENTLY THE LAYOUT, FORM, CONTENT AND DIMENSIONS OF THE FINISHED CONSTRUCTION MAY DIFFER MATERIALLY FROM THOSE SHOWN. NOR DO THE CONTENTS OF THIS DRAWING CONSTITUTE A CONTRACT, PART OF ANY CONTRACT OR WARRANTY.

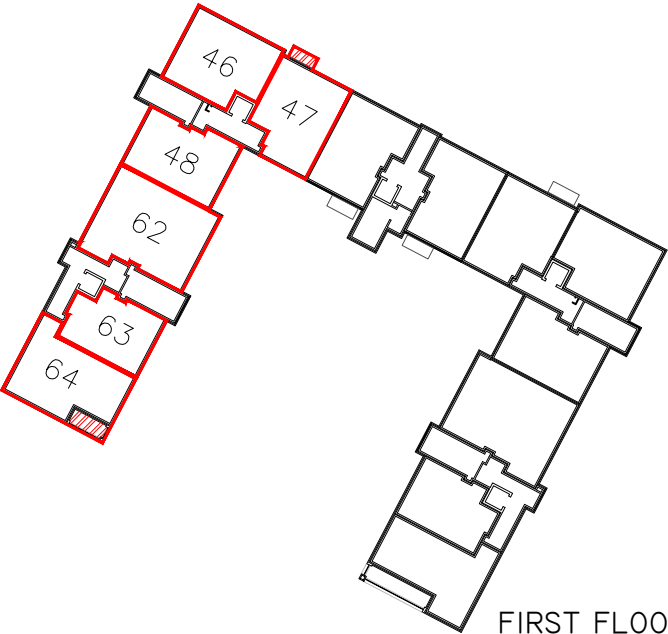
NORTH



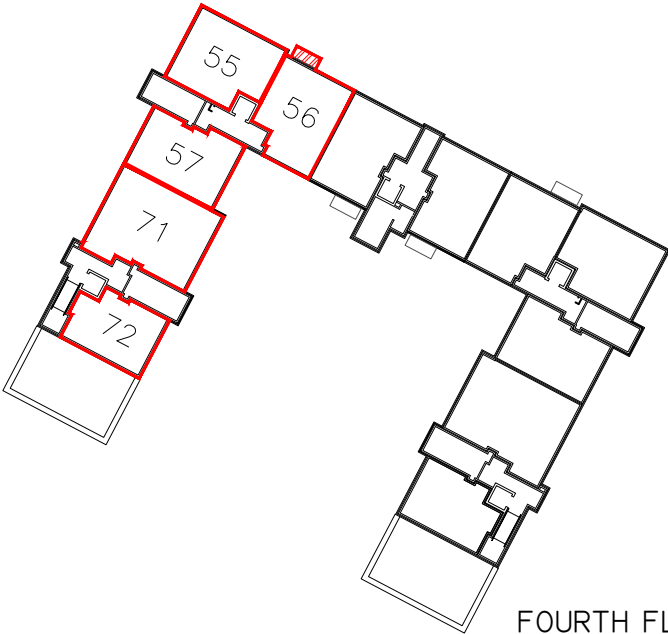
SECOND FLOOR



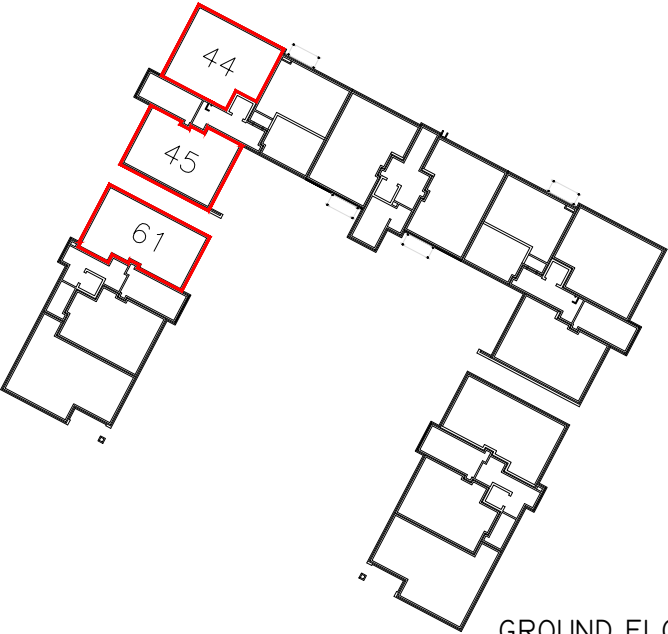
FIFTH FLOOR



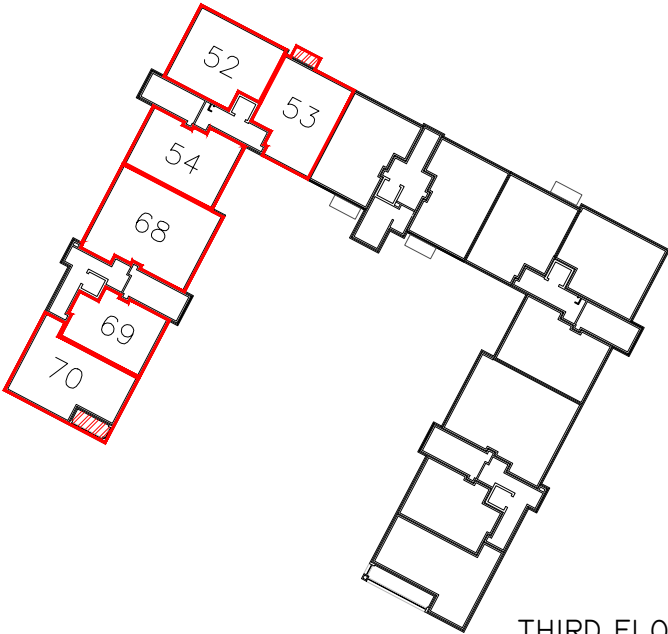
FIRST FLOOR



FOURTH FLOOR



GROUND FLOOR



THIRD FLOOR



FEU BOUNDARY



PLOT BALCONY



BARRATT
HOMES

DEVELOPMENT

**BATH ROAD
EDINBURGH**

TITLE

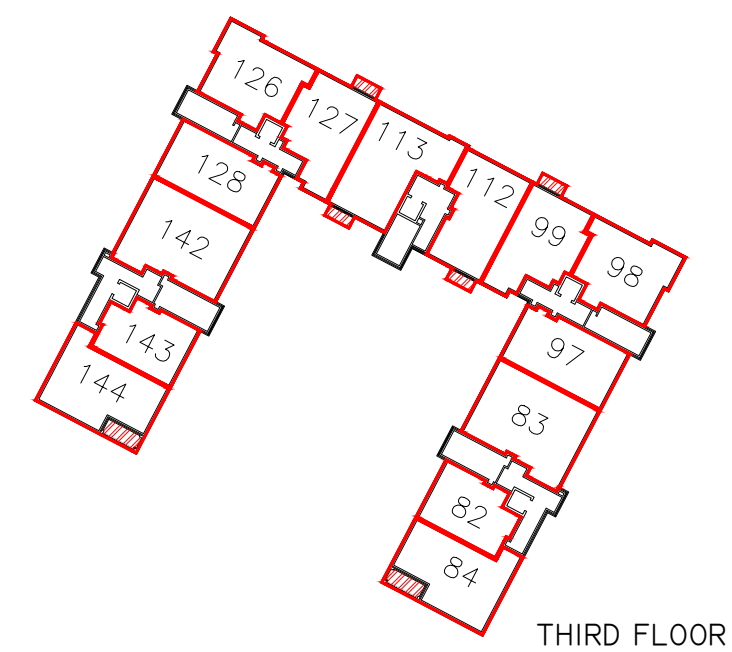
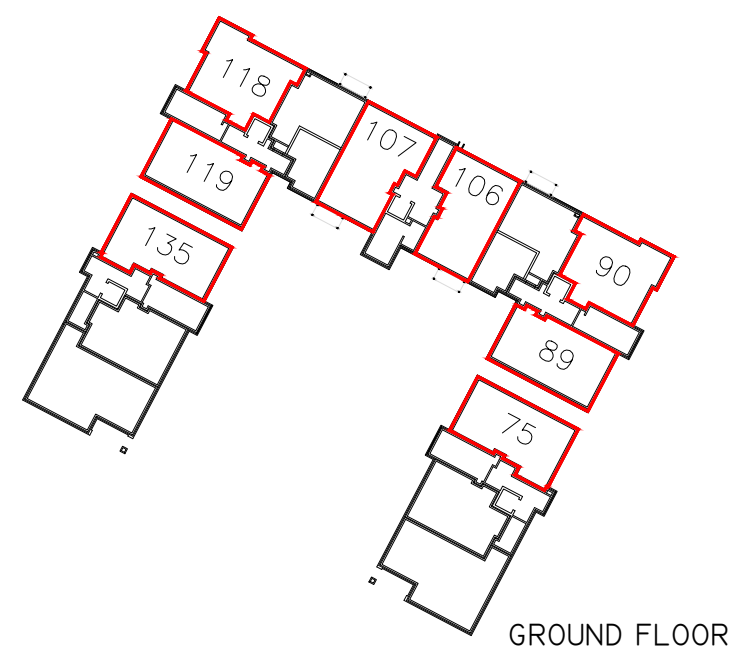
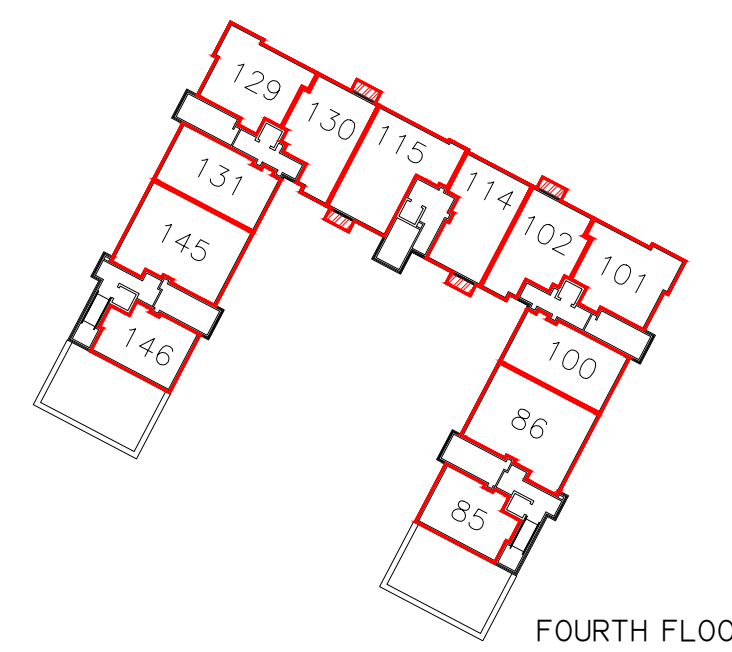
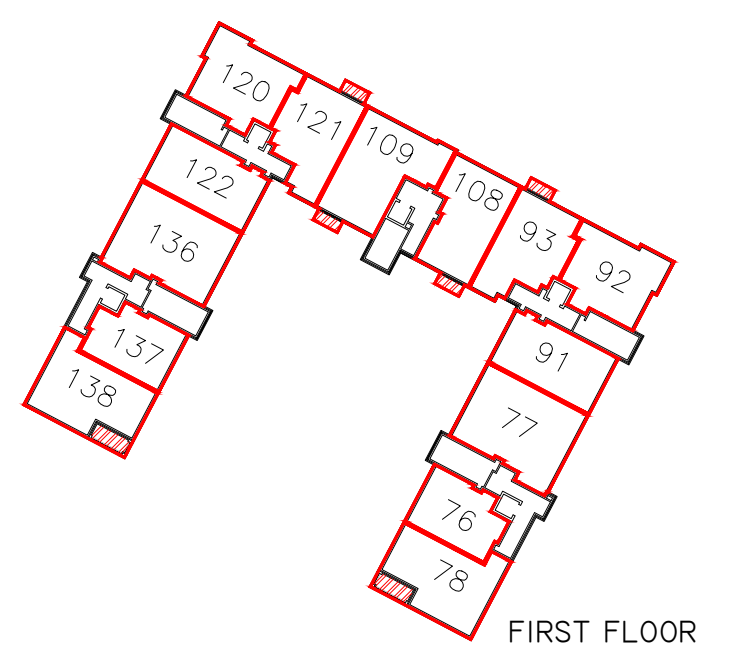
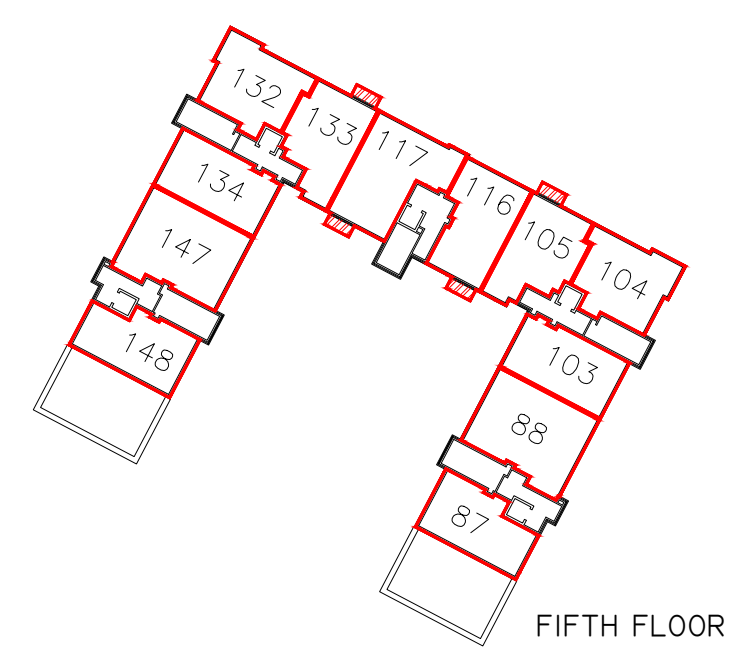
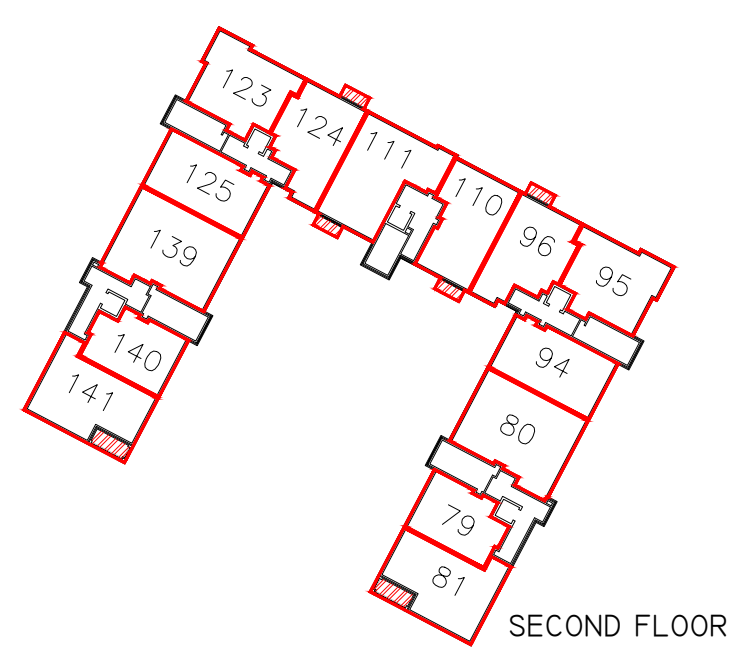
**DEVELOPMENT PLAN APPROVAL
DEED PLANS - BLOCK 1**

SCALES **1:750@A3**

DRG. No.

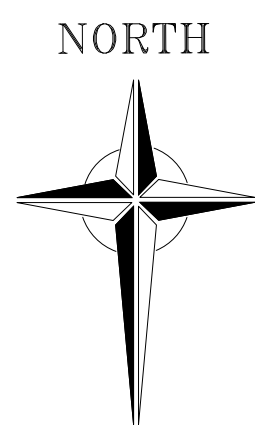
DATE **OCT'22**

H7821/DPA/03



WARNING TO HOUSE-PURCHASERS
PROPERTY MISDESCRIPTIONS ACT 1991

BUYERS ARE WARNED THAT THIS IS A WORKING DRAWING AND IS NOT INTENDED TO BE TREATED AS DESCRIPTIVE MATERIAL DESCRIBING IN RELATION TO ANY PARTICULAR PROPERTY OR DEVELOPMENT, ANY OF THE SPECIFIED MATTERS PRESCRIBED BY ANY ORDER MADE UNDER THE ABOVE ACT. THE CONTENTS OF THIS DRAWING MAY BE SUBJECT TO CHANGE AT ANY TIME AND ALTERATIONS AND VARIATIONS CAN OCCUR DURING THE PROGRESS OF THE WORKS WITHOUT REVISION OF DRAWING. CONSEQUENTLY THE LAYOUT, FORM, CONTENT AND DIMENSIONS OF THE FINISHED CONSTRUCTION MAY DIFFER MATERIALLY FROM THOSE SHOWN. NOR DO THE CONTENTS OF THIS DRAWING CONSTITUTE A CONTRACT, PART OF ANY CONTRACT OR WARRANTY.



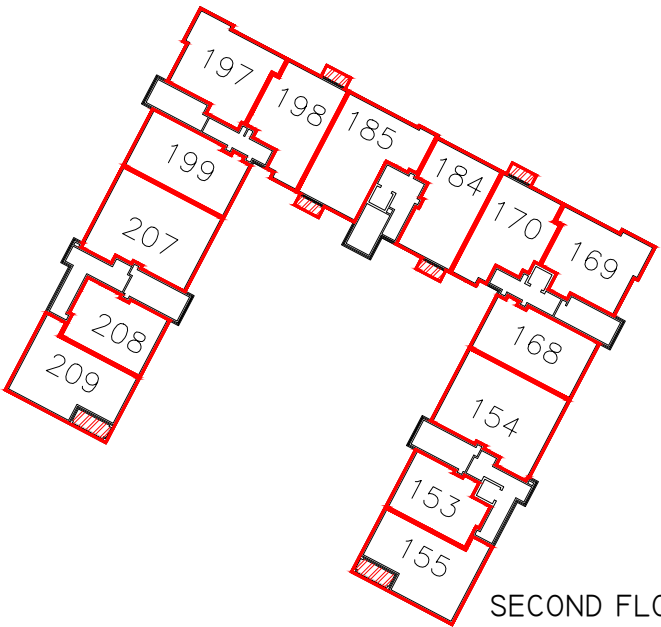
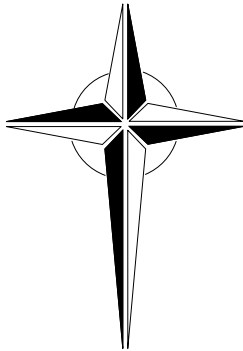
- FEU BOUNDARY
- PLOT BALCONY



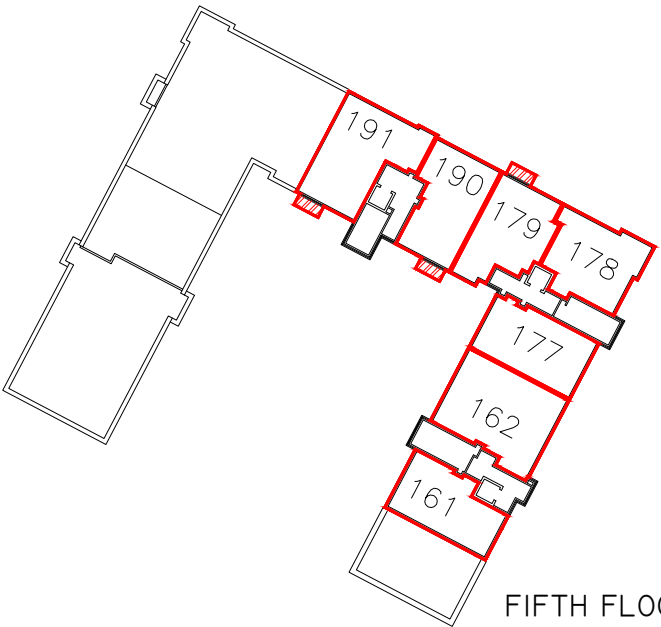
DEVELOPMENT		BATH ROAD EDINBURGH	
TITLE		DEVELOPMENT PLAN APPROVAL DEED PLANS - BLOCK 2	
SCALES	1:750@A3	DRG. No. H7821/DPA/04	
DATE	MAR'23		

BUYERS ARE WARNED THAT THIS IS A WORKING DRAWING AND IS NOT INTENDED TO BE TREATED AS DESCRIPTIVE MATERIAL DESCRIBING IN RELATION TO ANY PARTICULAR PROPERTY OR DEVELOPMENT, ANY OF THE SPECIFIED MATTERS PRESCRIBED BY ANY ORDER MADE UNDER THE ABOVE ACT. THE CONTENTS OF THIS DRAWING MAY BE SUBJECT TO CHANGE AT ANY TIME AND ALTERATIONS AND VARIATIONS CAN OCCUR DURING THE PROGRESS OF THE WORKS WITHOUT REVISION OF DRAWING. CONSEQUENTLY THE LAYOUT, FORM, CONTENT AND DIMENSIONS OF THE FINISHED CONSTRUCTION MAY DIFFER MATERIALLY FROM THOSE SHOWN. NOR DO THE CONTENTS OF THIS DRAWING CONSTITUTE A CONTRACT, PART OF ANY CONTRACT OR WARRANTY.

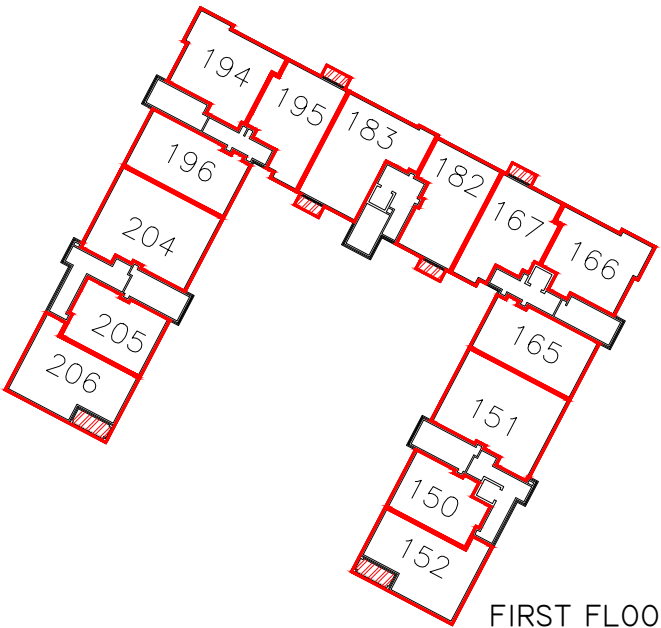
NORTH



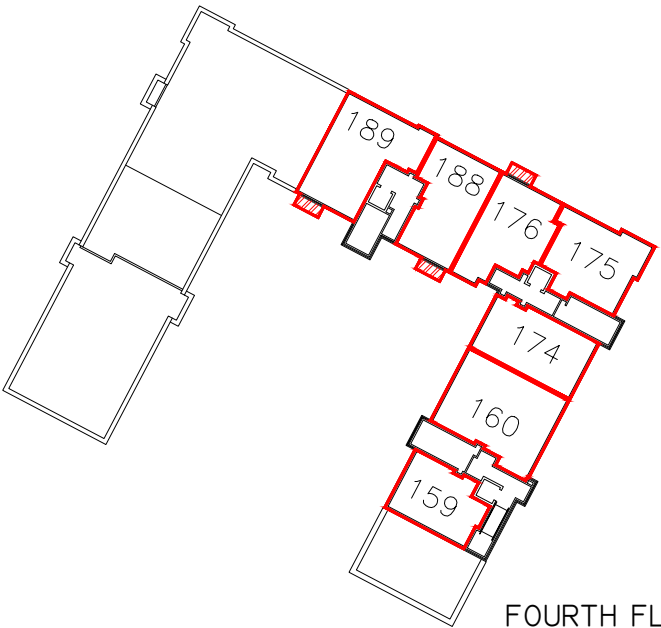
SECOND FLOOR



FIFTH FLOOR



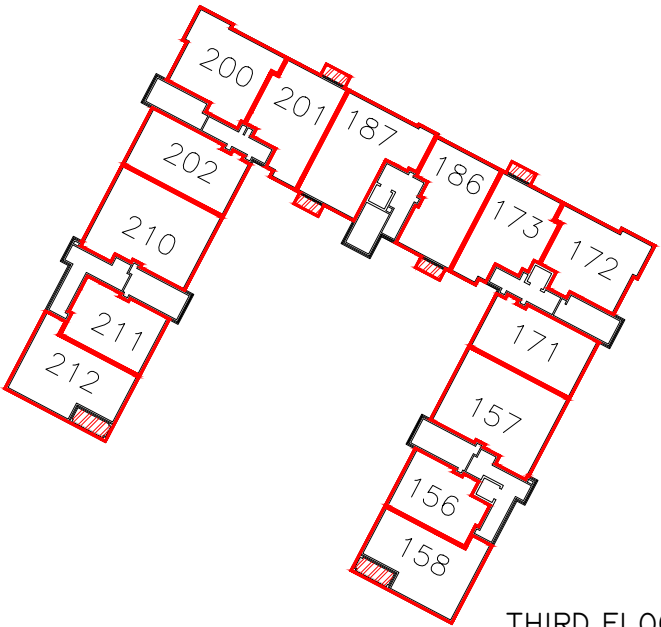
FIRST FLOOR



FOURTH FLOOR



GROUND FLOOR



THIRD FLOOR

- FEU BOUNDARY
- PLOT BALCONY



BARRATT
HOMES

DEVELOPMENT		BATH ROAD EDINBURGH	
TITLE		DEVELOPMENT PLAN APPROVAL DEED PLANS - BLOCK 3	
SCALES	1:750@A3	DRG. No.	
DATE	DEC'23	H7821/DPA/05	