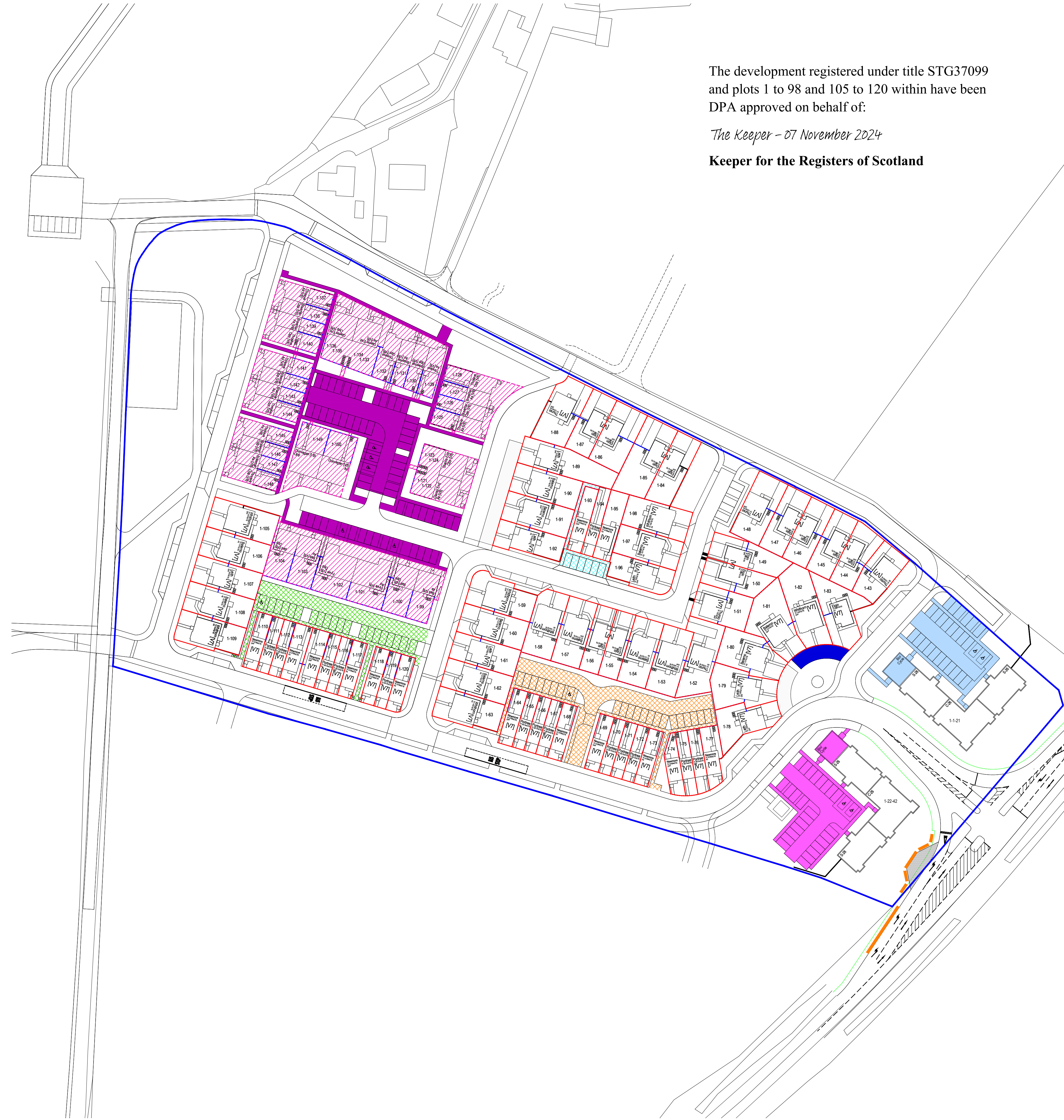
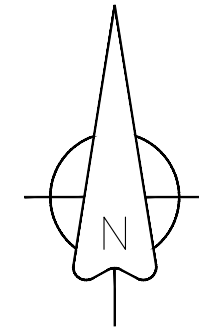
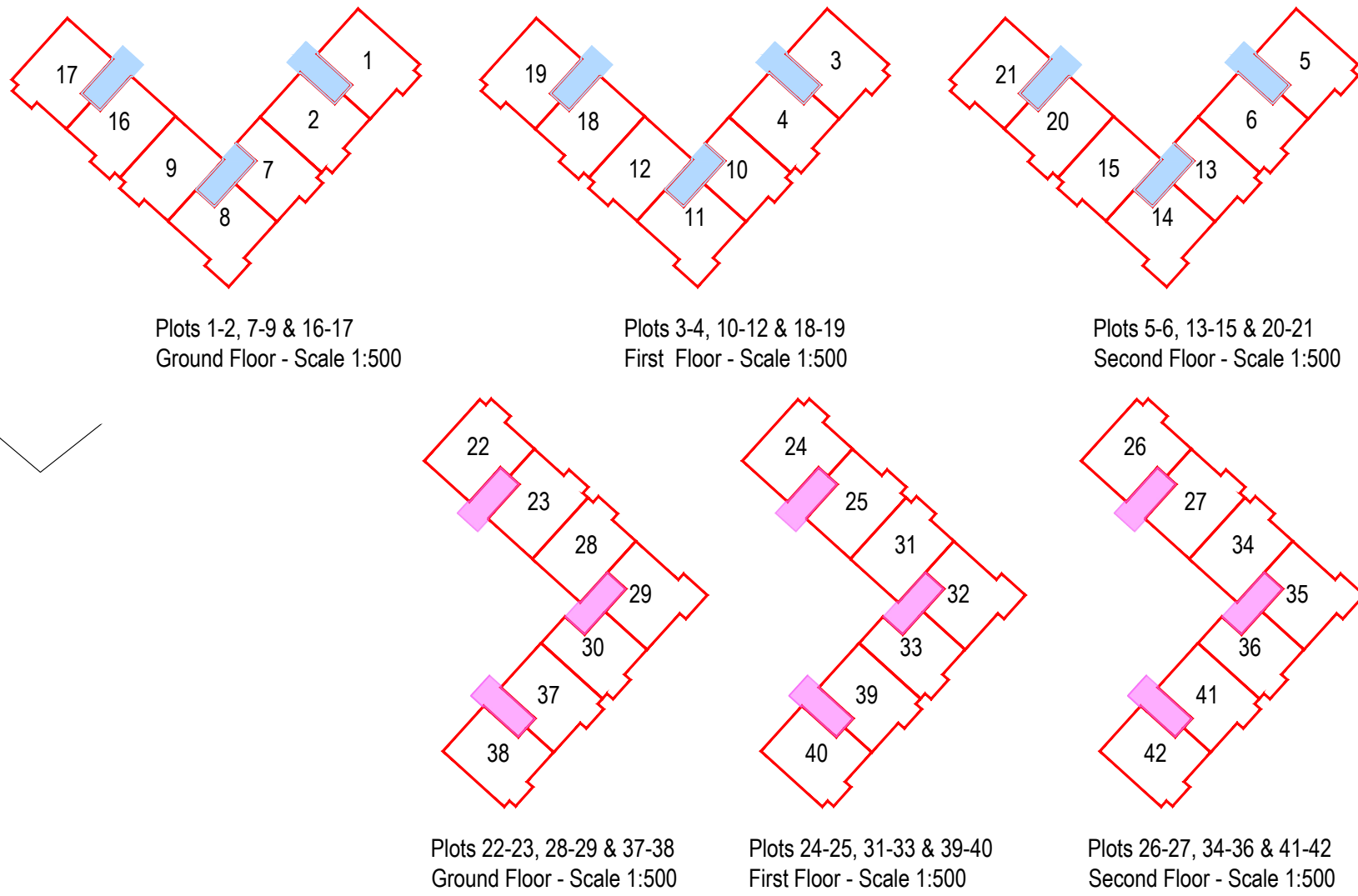


The development registered under title STG37099 and plots 1 to 98 and 105 to 120 within have been DPA approved on behalf of:

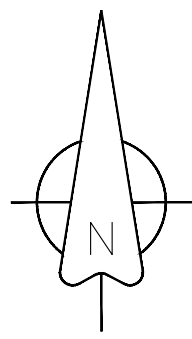
The Keeper – 07 November 2024

Keeper for the Registers of Scotland



- LEGEND**
- Title Boundary
 - Substation & associated hardstanding area to be adopted & maintained by utility provider. (Light Brown)
 - Public electric vehicle charging points & associated hardstanding to be adopted & maintained by the factor. (Cyan)
 - Housing, soft landscaping, and hardstanding adopted & maintained by Housing Association. Plots 99-104 & 121-150 (Pink Diagonal Hatch & Pink Dashed Boundary)
 - Private hardstanding area, lighting & electrical vehicle charging points shared between plots 99-104 & 121-150, maintained by factor, with wayleave access as a service strip, sewer wayleave or fibre cable wayleave. (Purple)
 - Private hardstanding, lighting, bin/ cycle store, electrical vehicle charging points & communal areas shared between plots 1-21, maintained by factor, with wayleave access as a service strip, sewer wayleave or fibre cable wayleave. (Light Blue)
 - Private hardstanding, lighting, bin/ cycle store, electrical vehicle charging points & communal areas shared between plots 22-42, maintained by factor, with wayleave access as a service strip, sewer wayleave or fibre cable wayleave. (Pink)
 - Private hardstanding area, lighting & electrical vehicle charging points shared between plots 64-77, maintained by factor, with wayleave access as a service strip, sewer wayleave or fibre cable wayleave. (Orange Cross-hatch)
 - Private hardstanding area & lighting shared between plots 78-80, maintained by factor, with wayleave access as a service strip, sewer wayleave or fibre cable wayleave. (Peach)
 - Private hardstanding area & lighting shared between plots 81-83, maintained by factor, with wayleave access as a service strip, sewer wayleave or fibre cable wayleave. (Dark Blue)
 - Private hardstanding area & lighting shared between plots 89-92, maintained by factor, with wayleave access as a service strip, sewer wayleave or fibre cable wayleave. (Dark Red)
 - Private hardstanding area & lighting shared between plots 93-95, maintained by factor, with wayleave access as a service strip, sewer wayleave or fibre cable wayleave. (Cyan Cross-hatch)
 - Private hardstanding area, lighting & electrical vehicle charging points shared between plots 110-120, maintained by factor, with wayleave access as a service strip, sewer wayleave or fibre cable wayleave. (Green Cross-hatch)





LEGEND

- Title Boundary
- Roadways, footpaths & parking adopted & maintained by Stirling Council Roads Department with wayleave access as a service strip, sewer wayleave or fibre cable wayleave & wayleave access to future development/ phases. (Grey)
- Public open space, pathways, street furniture, artwork, feature walls, equipped play & landscaping maintained by factor with with wayleave access as a service strip, sewer wayleave or fibre cable wayleave, wayleave access to future development/ phases. (Pale Green)
- Service strip and/ or swales adopted by Stirling Roads Department & maintained by factor with wayleave access to future development/ phases. (Yellow)
- Filter trench locations to be adopted by Stirling Roads Department & maintained by factor with wayleave access to future development/ phases. (Orange)
- Private front gardens owned by associated plot & maintained by factor. (Dark Green)
- Substation & associated hardstanding area to be adopted & maintained by utility provider. (Light Brown)
- Public electric vehicle charging points & associated hardstanding to be adopted & maintained by the factor. (Cyan)
- Plot paths adopted by Stirling Council Roads Department & maintained by associated plot with wayleave access as a service strip, sewer wayleave or fibre cable wayleave. (Dark Brown)
- Housing, soft landscaping, and hardstanding adopted & maintained by Housing Association. Plots 99-104 & 121-150 (Pink Diagonal Hatch & Pink Dashed Boundary)
- Private hardstanding area, lighting & electrical vehicle charging points shared between plots 99-104 & 121-150, maintained by factor, with wayleave access as a service strip, sewer wayleave or fibre cable wayleave. (Purple)
- Private hardstanding, lighting, bin/ cycle store, electrical vehicle charging points & communal areas shared between plots 1-21, maintained by factor, with wayleave access as a service strip, sewer wayleave or fibre cable wayleave. (Light Blue)
- Private hardstanding, lighting, bin/ cycle store, electrical vehicle charging points & communal areas shared between plots 22-42, maintained by factor, with wayleave access as a service strip, sewer wayleave or fibre cable wayleave. (Pink)
- Private hardstanding area, lighting & electrical vehicle charging points shared between plots 64-77, maintained by factor, with wayleave access as a service strip, sewer wayleave or fibre cable wayleave. (Orange Cross-hatch)
- Private hardstanding area & lighting shared between plots 78-80, maintained by factor, with wayleave access as a service strip, sewer wayleave or fibre cable wayleave. (Peach)
- Private hardstanding area & lighting shared between plots 81-83, maintained by factor, with wayleave access as a service strip, sewer wayleave or fibre cable wayleave. (Dark Blue)
- Private hardstanding area & lighting shared between plots 89-92, maintained by factor, with wayleave access as a service strip, sewer wayleave or fibre cable wayleave. (Dark Red)
- Private hardstanding area & lighting shared between plots 93-95, maintained by factor, with wayleave access as a service strip, sewer wayleave or fibre cable wayleave. (Cyan Cross-hatch)
- Private hardstanding area, lighting & electrical vehicle charging points shared between plots 110-120, maintained by factor, with wayleave access as a service strip, sewer wayleave or fibre cable wayleave. (Green Cross-hatch)

