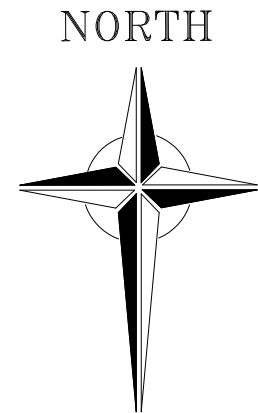


- SITE TITLE BOUNDARY - MID227383
- BLOCK 1, STAIRS 1-5 - PLOTS 1-66
- BLOCK 2, STAIRS 6-8 - PLOTS 67-105



The Development registered under title MID227383 and plots 1 to 66 within have been DPA approved.

The Keeper - 02 June 225

Keeper for the Registers of Scotland

WARNING TO HOUSE-PURCHASERS
PROPERTY MISDESCRIPTORS ACT 1991

BUYERS ARE WARNED THAT THIS IS A WORKING DRAWING AND IS NOT INTENDED TO BE TREATED AS DESCRIPTIVE MATERIAL DESCRIBING IN RELATION TO ANY PARTICULAR PROPERTY OR DEVELOPMENT, ANY OF THE SPECIFIED MATTERS PRESCRIBED BY ANY ORDER MADE UNDER THE ABOVE ACT. THE CONTENTS OF THIS DRAWING MAY BE SUBJECT TO CHANGE AT ANY TIME AND ALTERATIONS AND VARIATIONS CAN OCCUR DURING THE PROGRESS OF THE WORKS WITHOUT REVISION OF DRAWING. CONSEQUENTLY THE LAYOUT, FORM, CONTENT AND DIMENSIONS OF THE FINISHED CONSTRUCTION MAY DIFFER MATERIALLY FROM THOSE SHOWN. NOR DO THE CONTENTS OF THIS DRAWING CONSTITUTE A CONTRACT, PART OF ANY CONTRACT OR WARRANTY.

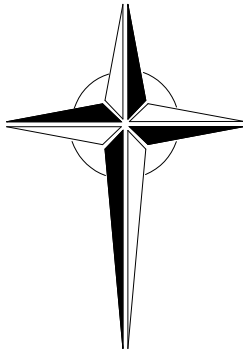


BARRATT
HOMES

DEVELOPMENT	
TOWER STREET EDINBURGH	
TITLE	
DEVELOPMENT PLAN APPROVAL BLOCK OUTLINES	
SCALES	1:1250@A3
DATE	MAY'25
DRG. No.	H8058/DPA/00

BUYERS ARE WARNED THAT THIS IS A WORKING DRAWING AND IS NOT INTENDED TO BE TREATED AS DESCRIPTIVE MATERIAL DESCRIBING IN RELATION TO ANY PARTICULAR PROPERTY OR DEVELOPMENT, ANY OF THE SPECIFIED MATTERS PRESCRIBED BY ANY ORDER MADE UNDER THE ABOVE ACT. THE CONTENTS OF THIS DRAWING MAY BE SUBJECT TO CHANGE AT ANY TIME AND ALTERATIONS AND VARIATIONS CAN OCCUR DURING THE PROGRESS OF THE WORKS WITHOUT REVISION OF DRAWING. CONSEQUENTLY THE LAYOUT, FORM, CONTENT AND DIMENSIONS OF THE FINISHED CONSTRUCTION MAY DIFFER MATERIALLY FROM THOSE SHOWN. NOR DO THE CONTENTS OF THIS DRAWING CONSTITUTE A CONTRACT, PART OF ANY CONTRACT OR WARRANTY.

NORTH



SECOND FLOOR



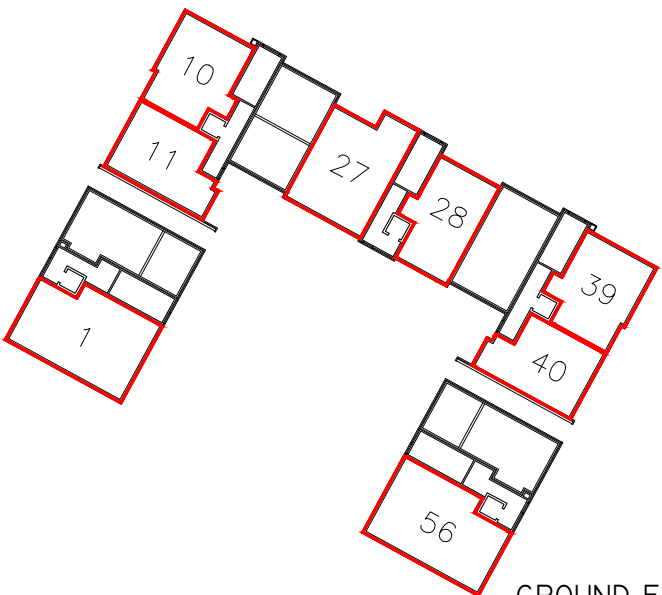
FIFTH FLOOR



FIRST FLOOR



FOURTH FLOOR



GROUND FLOOR



THIRD FLOOR

 PLOT BOUNDARY



BARRATT
HOMES

DEVELOPMENT		
TOWER STREET EDINBURGH		
TITLE		
DEVELOPMENT PLAN APPROVAL DEED PLANS - BLOCK 1		
SCALES	1:750@A3	DRG. No.
DATE	MAY'25	H8058/DPA/02