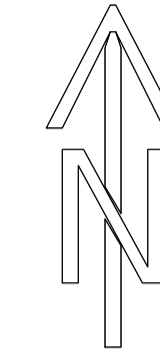
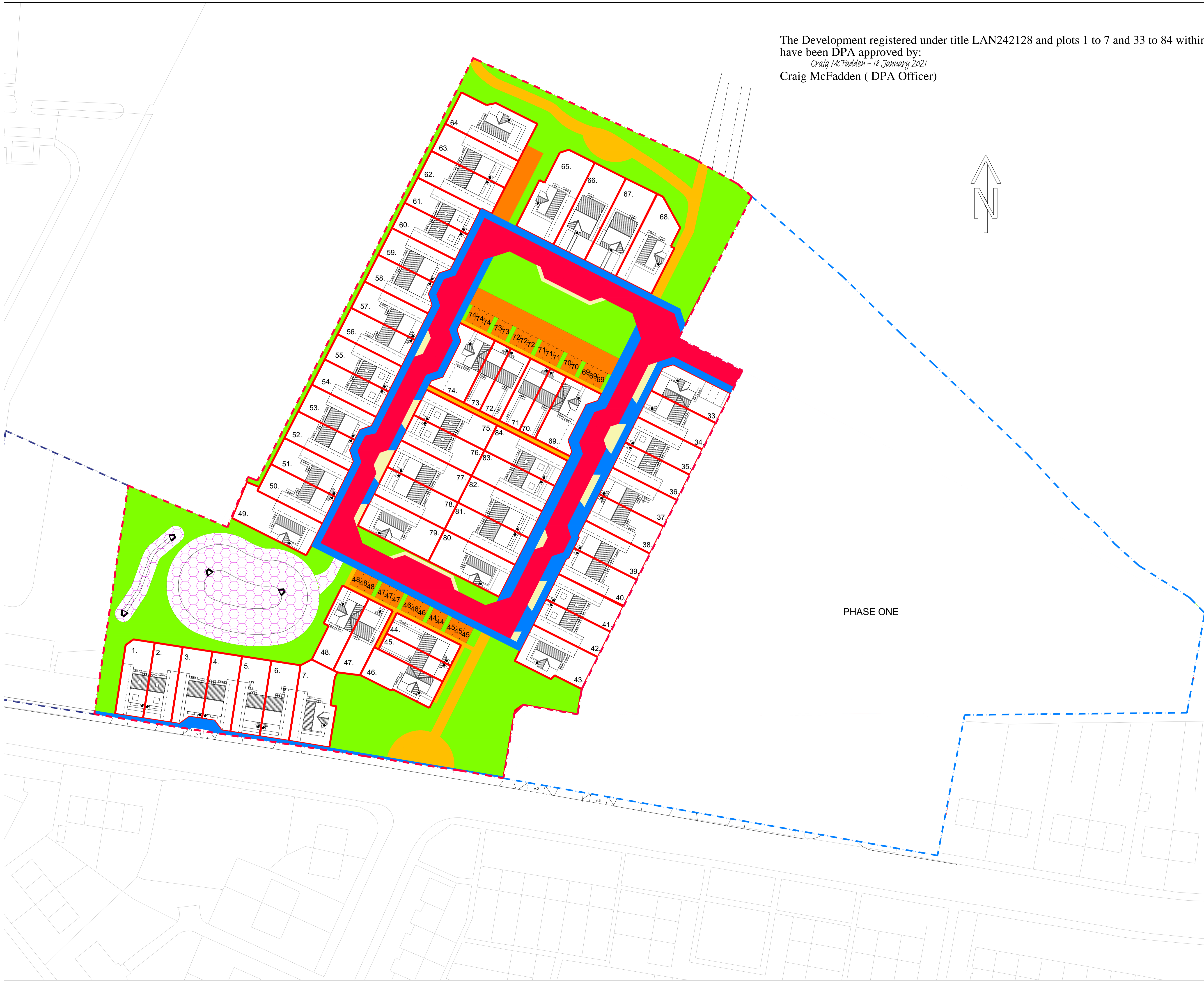


The Development registered under title LAN242128 and plots 1 to 7 and 33 to 84 within  
 have been DPA approved by:  
 Craig McFadden - 18 January 2021  
 Craig McFadden ( DPA Officer)



Legend

- Soft Landscaping
- Shared Surface
- Common Footpath
- Adoptable Footpath
- Adoptable Road
- Adoptable Verge
- SUDS
- Plot Boundary
- Site Boundary
- Phase One Boundary



PHASE ONE

Rev	A Update to site boundary; allocated parking numbers added 01.09.20 PM --		
Details	Date	By	Chk

DATE	29.07.19	DRAWN	PM
SCALE	1:500@A1	CHK	--

Deed of Conditions  
Phase Two Plan

RAVENS CRAIG  
MOTHERWELL

Dwg No	RNC(10)102	Rev	A
--------	------------	-----	---

Keepmoat, Unit 3, Cambuslang Court, Glasgow,  
G32 8FH.  
Tel: 0141 641 5930 www.keepmoat.com

