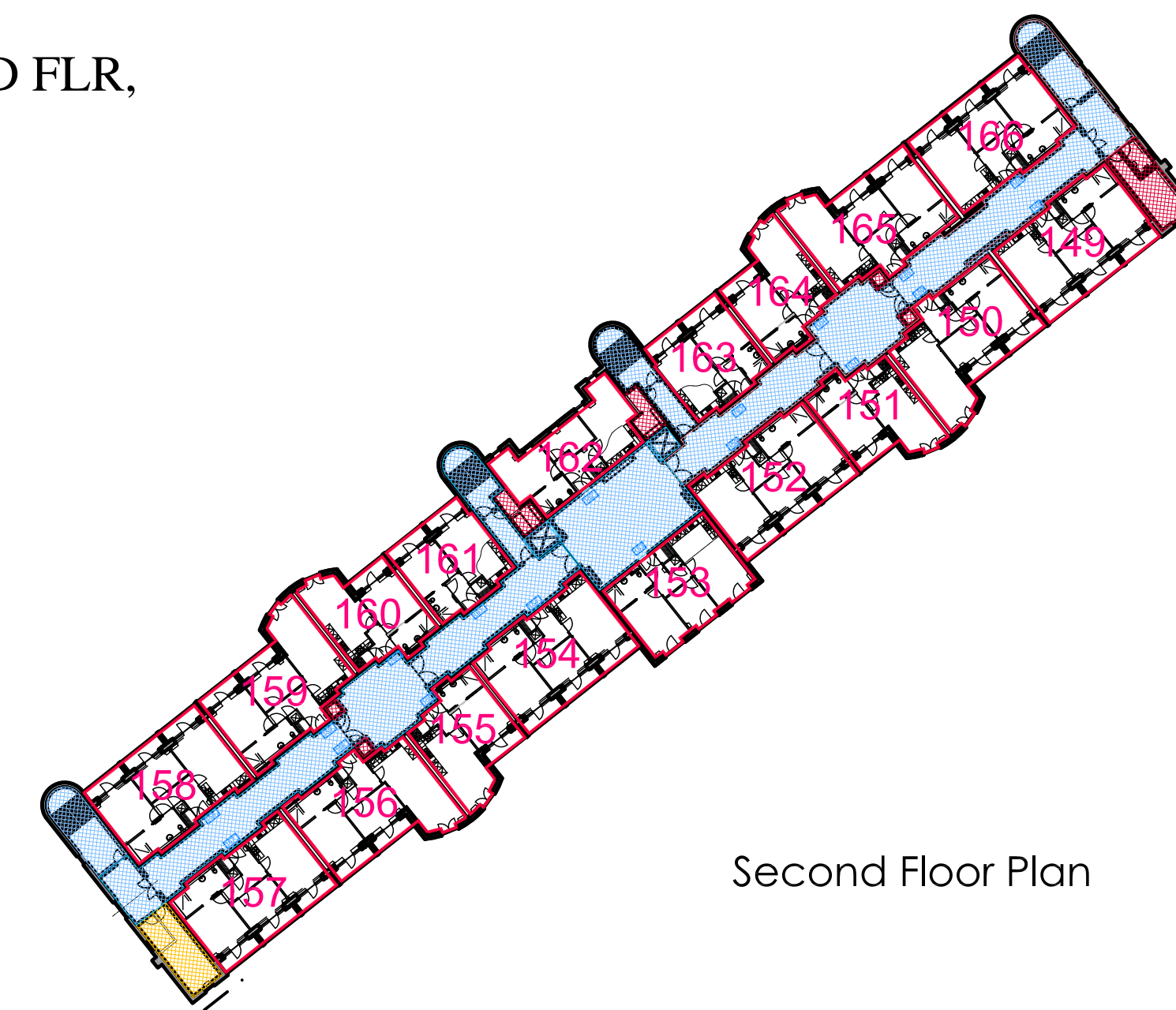
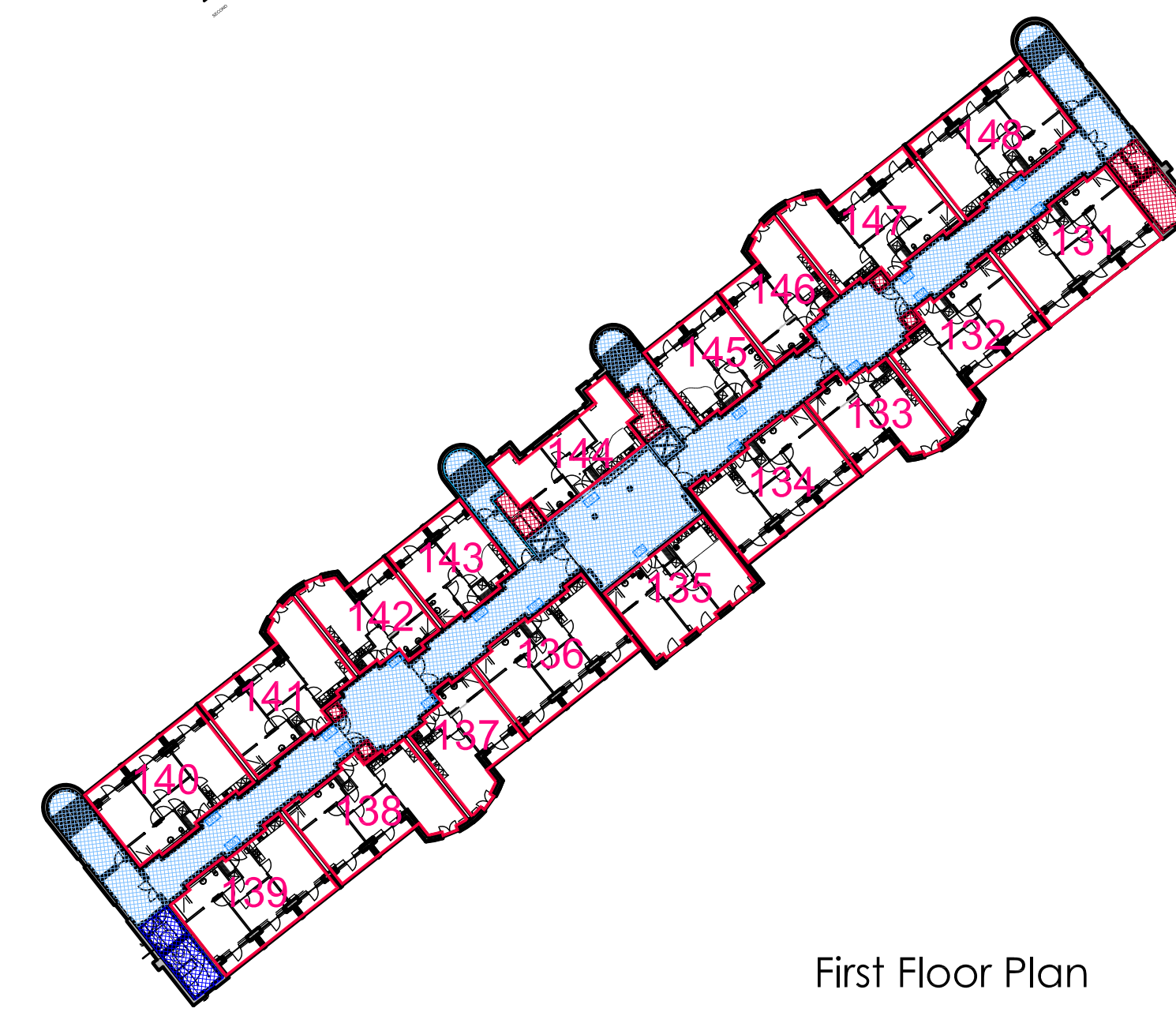


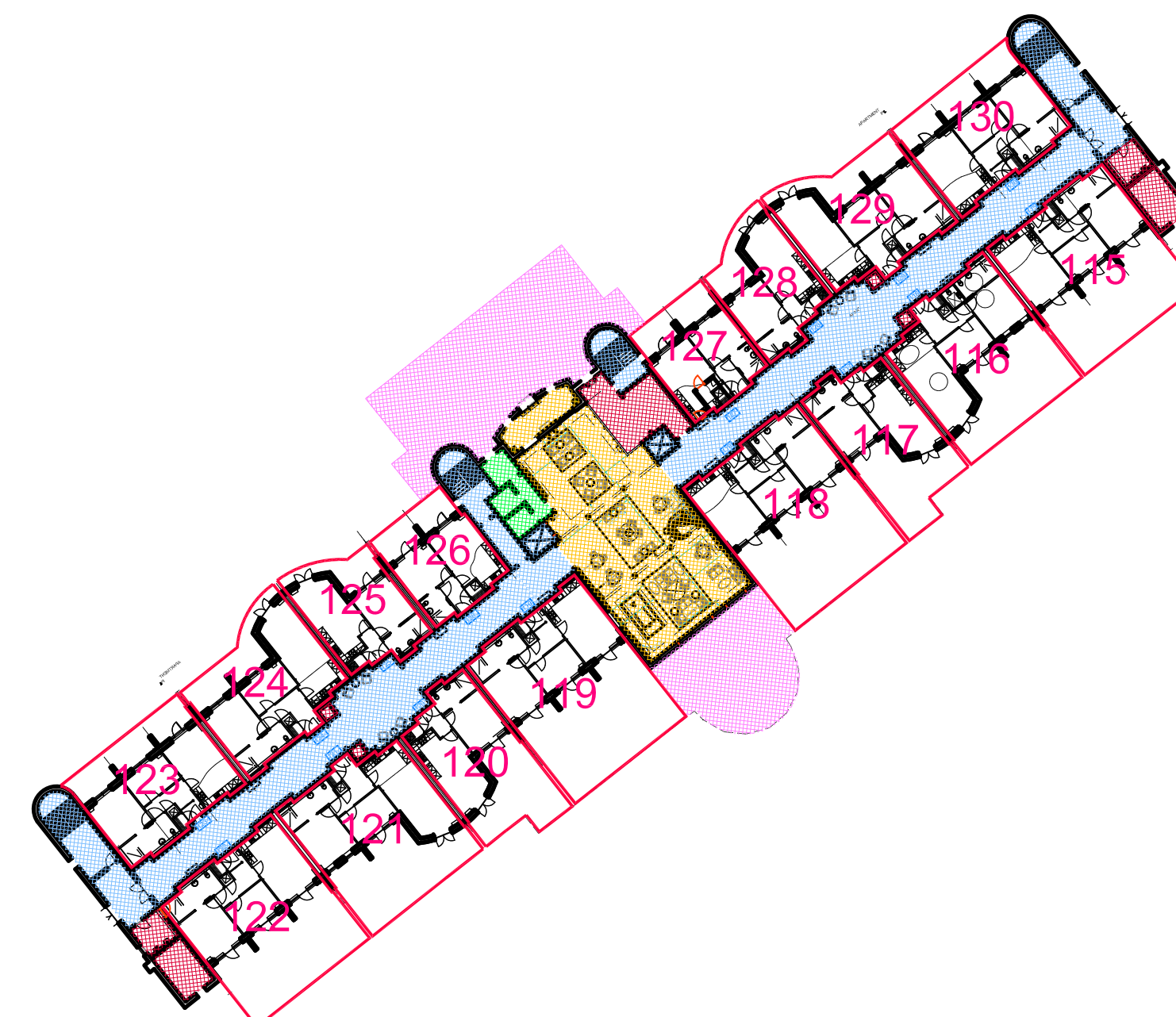
The Development registered under title LAN203332 and plots 115 to 166 within the unique DPA identifiers LAN203332-GRD FLR,
 LAN203332-1ST FLR and LAN203332- 2ND FLR have been DPA approved by :
 Craig McFadden - 27 September 2016
 Craig McFadden (DPA Officer)



Second Floor Plan



First Floor Plan



Ground Floor Plan

Notes
 Do not scale from this drawing. All sizes to be taken and checked on site by the contractor prior to the preparation of shop drawings or fabrication of parts. Any discrepancies should be brought to the immediate attention of the architect.
 NB This drawing information has been produced for Methodist Housing Association and has been prepared for purposes of Development Plan Approval. It is not intended for construction or for use by any other person or for any other purpose.

- Circulation
- MHA Retained
- Lounge
- Toilets
- Assisted Bathroom
- Bin Store
- External
- Site Boundary

Rev	Date	Description	Rev by
Status		Stage 5 - Construction	

pda
PETER DRUMMOND, ARCHITECT
 Architecture - Heritage - Conservation

60 Bank Street, Kilmarnock, KA1 1ER
 130 Stanley Street, Glasgow, G41 1JH
 T: 01563 898228/0141 530 7955
 E: mail@pdaarch.co.uk

Client:
 Alteration to Nethervale, Auchlochlan
 for MHA

Drawing Title:
 Development Plan Approval

Project Architect	PD	Drawn by	AC	Checked by	
Scale	1/500 @ A1	Rev Number	15020	Drawing Number	DPA 001 A
Date	Sept '16				