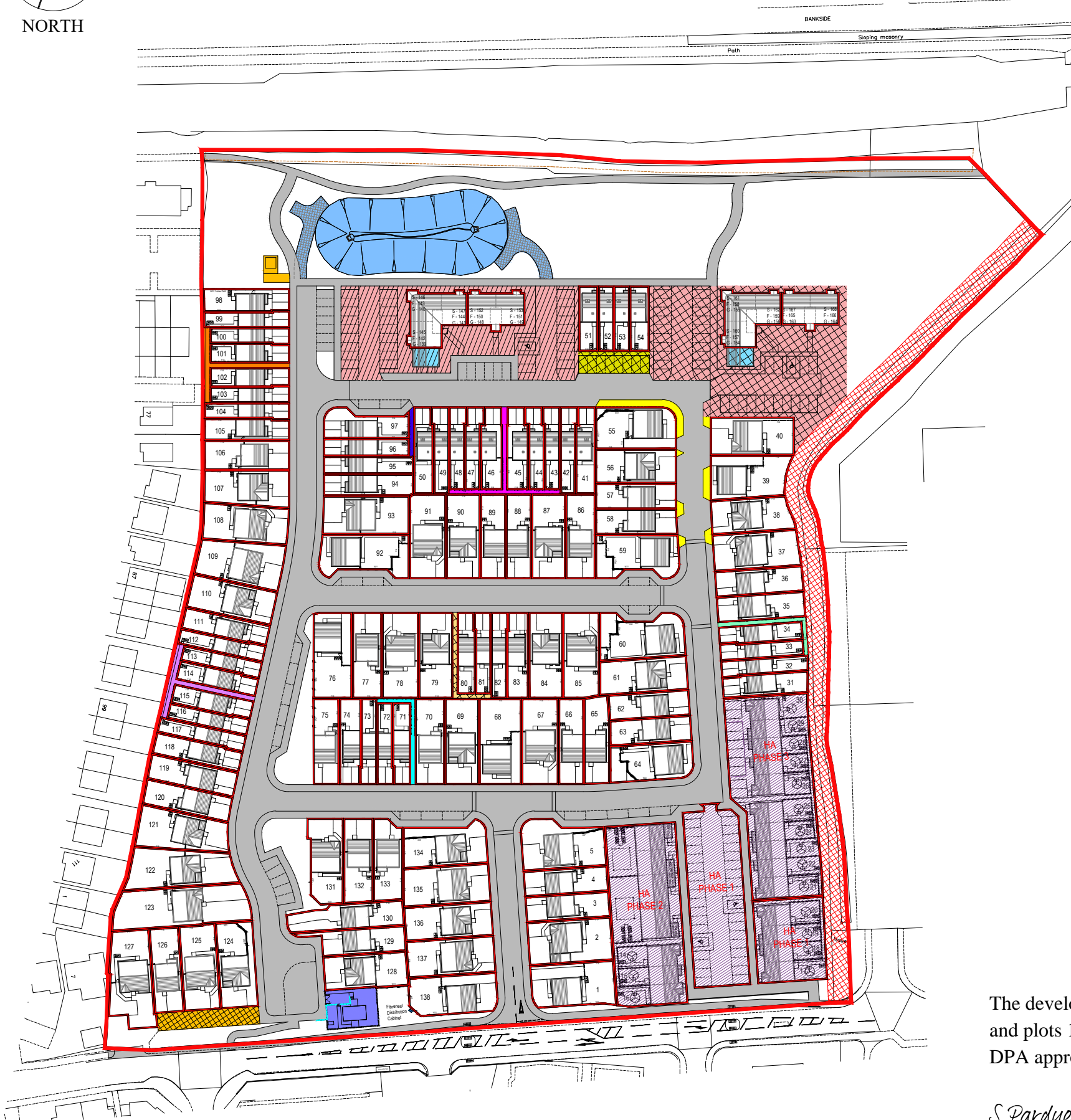
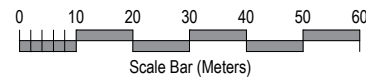
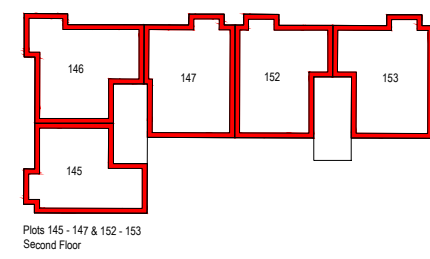


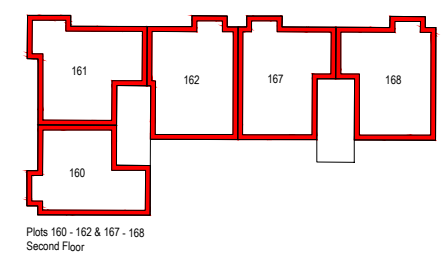
NORTH



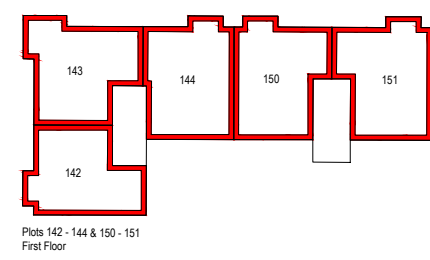
LEGEND			
	Site Boundary		FibreNest distribution cabinet location, area maintained by factor. (Blue)
	Roadways, footways & parking adopted and maintained by Falkirk Council Roads Department. (Grey)		Suds Basin and access track adopted and maintained by Scottish Water (Light Blue).
	Gas Governor, hard standing and landscaping owned and maintained by Scottish Gas. (Dark Blue)		Scottish Water Sewer Wayleave (Red Checked Hatch)
	Sub Station, and hard standing owned and maintained by Energy Assets. (Light Orange)		Service strip adopted by Falkirk Council Roads Department and maintained by associated plot. (Yellow)
	Private hard standing area shared between plots 154-168 maintained by factor, wayleave access to FibreNest. (Pink with Checked Black Hatch)		Private hard standing area shared between plots 51-54 maintained by factor, wayleave access to FibreNest. (Light Green with Checked Black Hatch)
	Private hard standing area shared between plots 139-153 maintained by factor, wayleave access to FibreNest & Scottish Water. (Pink with Diagonal Black Hatch)		Private hard standing area shared between plots 124-127 maintained by factor, wayleave access to FibreNest. (Light Orange with Checked Black Hatch)
	Private bin/cycle store for plots 154-168 maintained by factor. (Cyan with Checked Black Hatch)		Private hard standing area shared between plots 71-73 maintained by factor, wayleave access to FibreNest. (Cyan)
	Private bin/cycle store for plots 139-153 adopted and maintained by factor. (Cyan with Diagonal Black Hatch)		Private hard standing area shared between plots 112-117 maintained by factor, wayleave access to FibreNest. (Light Purple)
	Private hard standing area shared between plots 99-104 maintained by factor, wayleave access to FibreNest. (Orange)		Private hard standing area shared between plots 80-82 maintained by factor, wayleave access to FibreNest. (Peach with Checked Black Hatch)
	Private hard standing area shared between plots 32-34 maintained by factor, wayleave access to FibreNest. (Turquoise)		Private hard standing area shared between plots 42-49 maintained by factor, wayleave access to FibreNest. (Dark Pink)
	Private hard standing area shared between plots 95-97 maintained by factor, wayleave access to FibreNest. (Dark Purple)		Shared hard and Landscaping maintained by Housing Association including wayleave access to FibreNest. (Purple Diagonal Hatch)



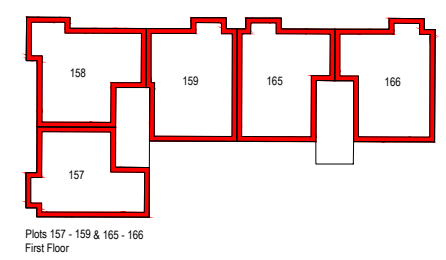
Plots 145 - 147 & 152 - 153 Second Floor



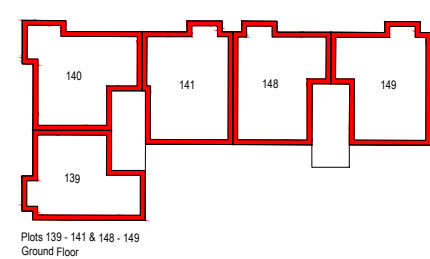
Plots 160 - 162 & 167 - 168 Second Floor



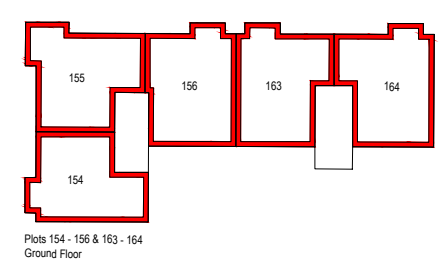
Plots 142 - 144 & 150 - 151 First Floor



Plots 157 - 159 & 165 - 166 First Floor



Plots 139 - 141 & 148 - 149 Ground Floor



Plots 154 - 156 & 163 - 164 Ground Floor

The development registered under title STG38060 and plots 1 to 5 and 31 to 168 within have been DPA approved by:

S Pardue - 7th October 2019

Stuart Pardue (DPA Officer)

Persimmon Homes

Persimmon Homes East Scotland
Unit 1
Wester Inch Business Park
Old Well Court
Bathgate
West Lothian
EH48 2TQ

26th January 2018



Etna Road, Falkirk - DPA - Rev D