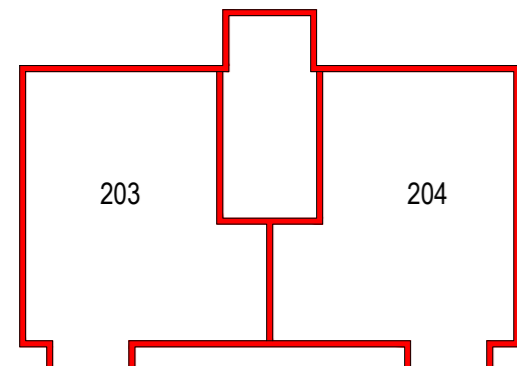
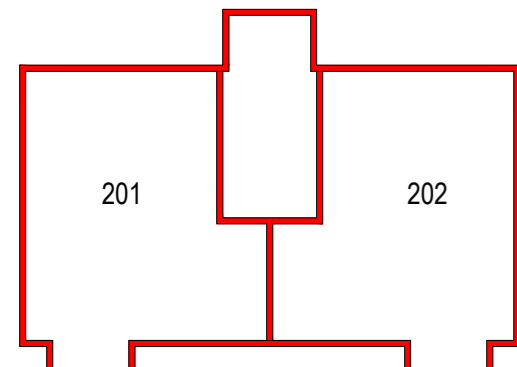


Plots 205-206 Second Floor



Plots 203-204 First Floor

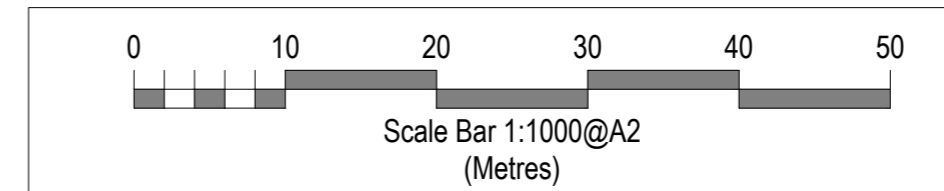


Plots 201-202 Ground Floor

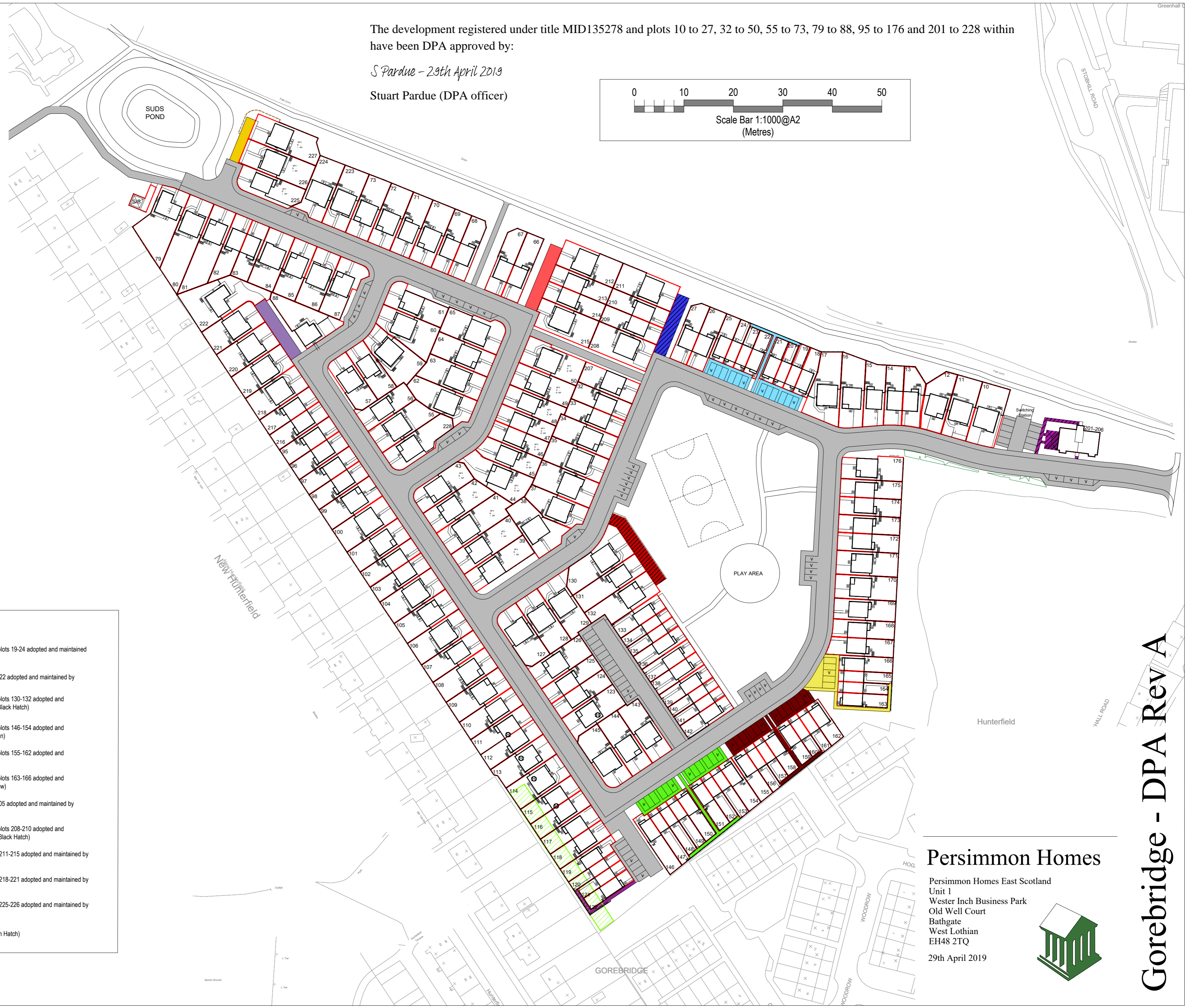
The development registered under title MID135278 and plots 10 to 27, 32 to 50, 55 to 73, 79 to 88, 95 to 176 and 201 to 228 within have been DPA approved by:

S Pardue - 29th April 2019

Stuart Pardue (DPA officer)

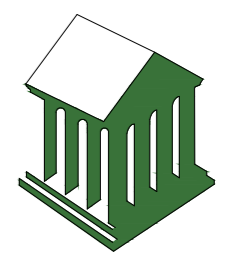


LEGEND	
	Site Boundary
	Shared hard standing areas for plots 19-24 adopted and maintained by factor. (Light Blue)
	Shared drive way for plots 120-122 adopted and maintained by factor. (Purple)
	Shared hard standing areas for plots 130-132 adopted and maintained by factor. (Red with Black Hatch)
	Shared hard standing areas for plots 146-154 adopted and maintained by factor. (Light Green)
	Shared hard standing areas for plots 155-162 adopted and maintained by factor. (Red)
	Shared hard standing areas for plots 163-166 adopted and maintained by factor. (Light Yellow)
	Shared areas for flat plots 201-205 adopted and maintained by factor. (Purple with Black Hatch)
	Shared hard standing areas for plots 208-210 adopted and maintained by factor. (Blue with Black Hatch)
	Shared driveway areas for plots 211-215 adopted and maintained by factor. (Light Red)
	Shared driveway areas for plots 218-221 adopted and maintained by factor. (Light Purple)
	Shared driveway areas for plots 225-226 adopted and maintained by factor. (Yellow)
	Scottish Water Wayleave. (Green Hatch)



Persimmon Homes

Persimmon Homes East Scotland
 Unit 1
 Wester Inch Business Park
 Old Well Court
 Bathgate
 West Lothian
 EH48 2TQ
 29th April 2019



Gorebridge - DPA Rev A