



LEGEND


- Overall Site Boundary
- Plot Boundary (noted in light blue where Plot Boundary meets Site Boundary)
- Adopted Roads
- Adopted Paths
- Existing Adopted Pathways (outwith ownership boundary)
- Proposed Adopted Road (outwith ownership boundary)
- Adopted Public Space
- Servitude Areas
- Mews Boundary
- Mansion Boundary

The development registered under title FFE127929 and plots 1 to 41, Mews units 1 to 5 and Mansion units 1 to 9 within have been DPA approved by:

*D MacDonald 26 Apr 2021*

David MacDonald (DPA Officer)

Master Drawn by: - Last Revision Date: - Master Dwg No: - Master Revision: -



EASY LIVING

HOMES

Eastfield Ind. Est. Glenrothes, Fife, KY7 4NS  
Tel: 01592 770020 Fax: 01592 807060 Web : www.eld.uk.com

Copyright in this design is reserved to Easy Living Developments and these drawings are supplied on the express condition that they are to be treated as confidential and are not to be copied photographically or otherwise or communicated to any third party without prior written consent of Easy Living Developments.

Date	Drawing Revision	Index	By

PROJECT / CLIENT:  
Proposed Development at  
Forth Park, Kirkcaldy

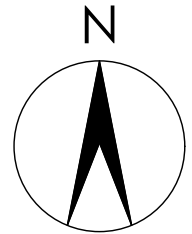
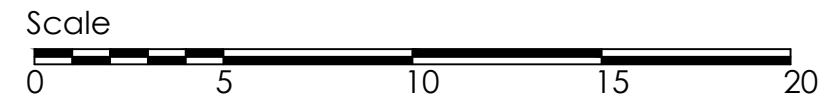
DRAWING:  
Development Plan Approval  
Overall Site Plan

Drawn/altered by: KHB Checked by: - Date: 30/09/19 Scales: 1:500

Site Code: 043 Job Code: DPA Drawing No.: 001 Revision: -

A1





LEGEND

- Boundary Extent of Mews Grounds
- Individual Unit Boundary
- Factored Communal Space & Access
- Unit 1
- Unit 2
- Unit 3
- Unit 4
- Unit 5
- Unit 1 Parking Allocation
- Unit 2 Parking Allocation
- Unit 3 Parking Allocation
- Unit 4 Parking Allocation
- Unit 5 Parking Allocation
- Visitor Parking (Communal factor)
- Unit 5 Garden

Master Drawn by:	Last Revision Date:	Master Dwg No:	Master Revision:
-	-	-	-

# EASY LIVING

HOMES

Eastfield Ind. Est. Glenrothes, Fife, KY7 4NS  
Tel: 01592 770020 Fax: 01592 807060 Web : www.eld.uk.com

Copyright in this design is reserved to Easy Living Developments and these drawings are supplied on the express condition that they are to be treated as confidential and are not to be copied photographically or otherwise or communicated to any third party without prior written consent of Easy Living Developments.

Date	Drawing Revision	Index	By

PROJECT / CLIENT:

Proposed Development at  
Forth Park, Kirkcaldy

DRAWING:

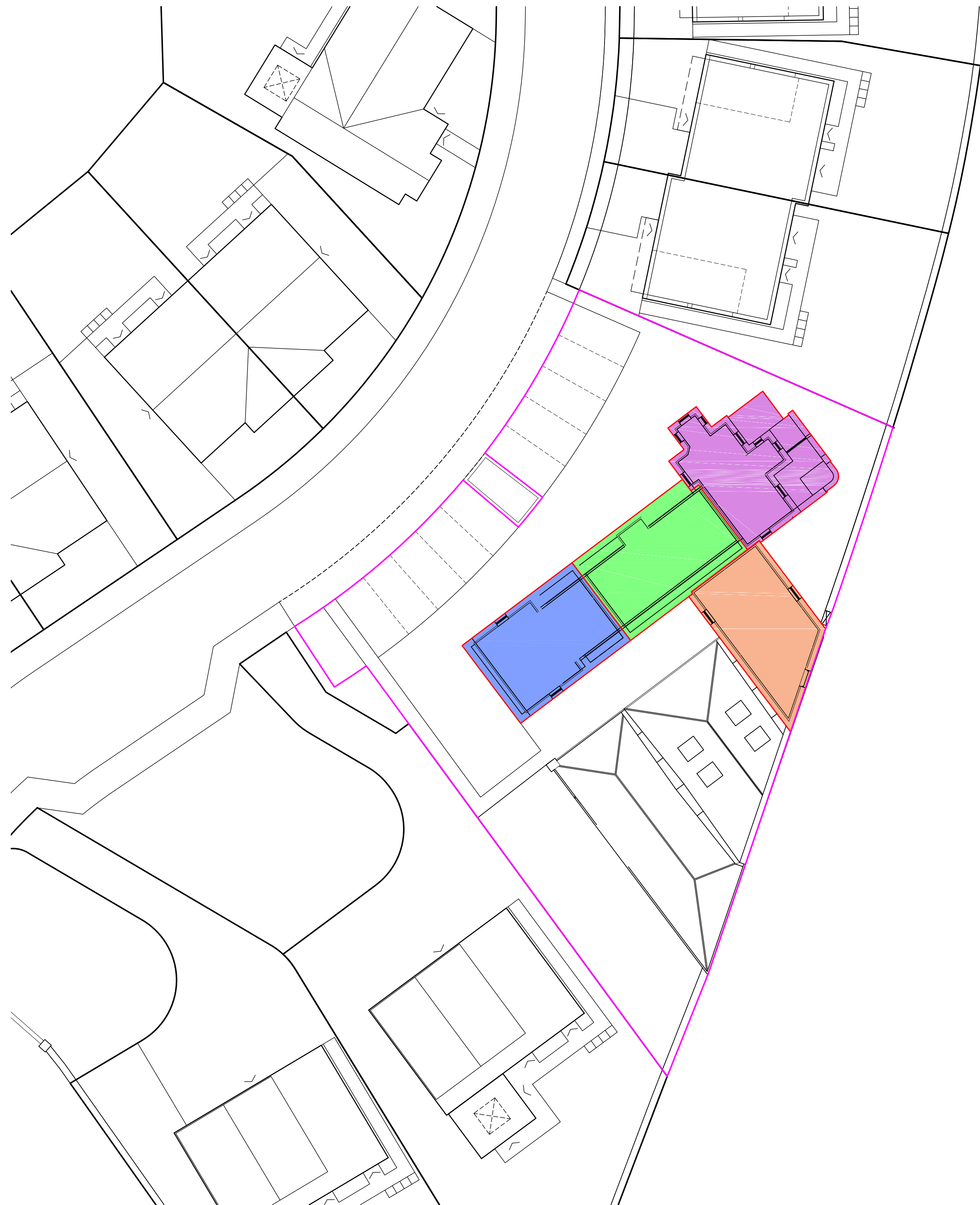
Development Plan Approval

Mews Block Ground Floor

A1

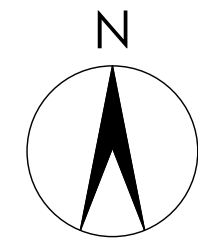
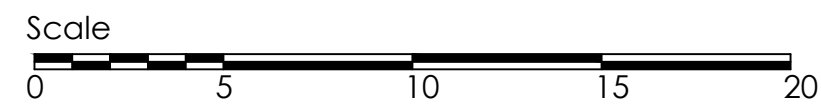
Drawn/alterd by:	Checked by:	Date:	Scales:
MW	-	12/11/20	1:200

Site Code:	Job Code:	Drawing No.:	Revision:
043	DPA	002	-



LEGEND

- Boundary Extent of Mews Grounds
- Individual Unit Boundary
- Unit 1
- Unit 2
- Unit 3
- Unit 5



Master Drawn by:	Last Revision Date:	Master Dwg No:	Master Revision:
-	-	-	-



**EASY LIVING**  
HOMES

Eastfield Ind. Est. Glenrothes, Fife, KY7 4NS  
Tel: 01592 770020 Fax: 01592 807060 Web : www.eld.uk.com

Copyright in this design is reserved to Easy Living Developments and these drawings are supplied on the express condition that they are to be treated as confidential and are not to be copied photographically or otherwise or communicated to any third party without prior written consent of Easy Living Developments.

Date	Drawing Revision	Index	By

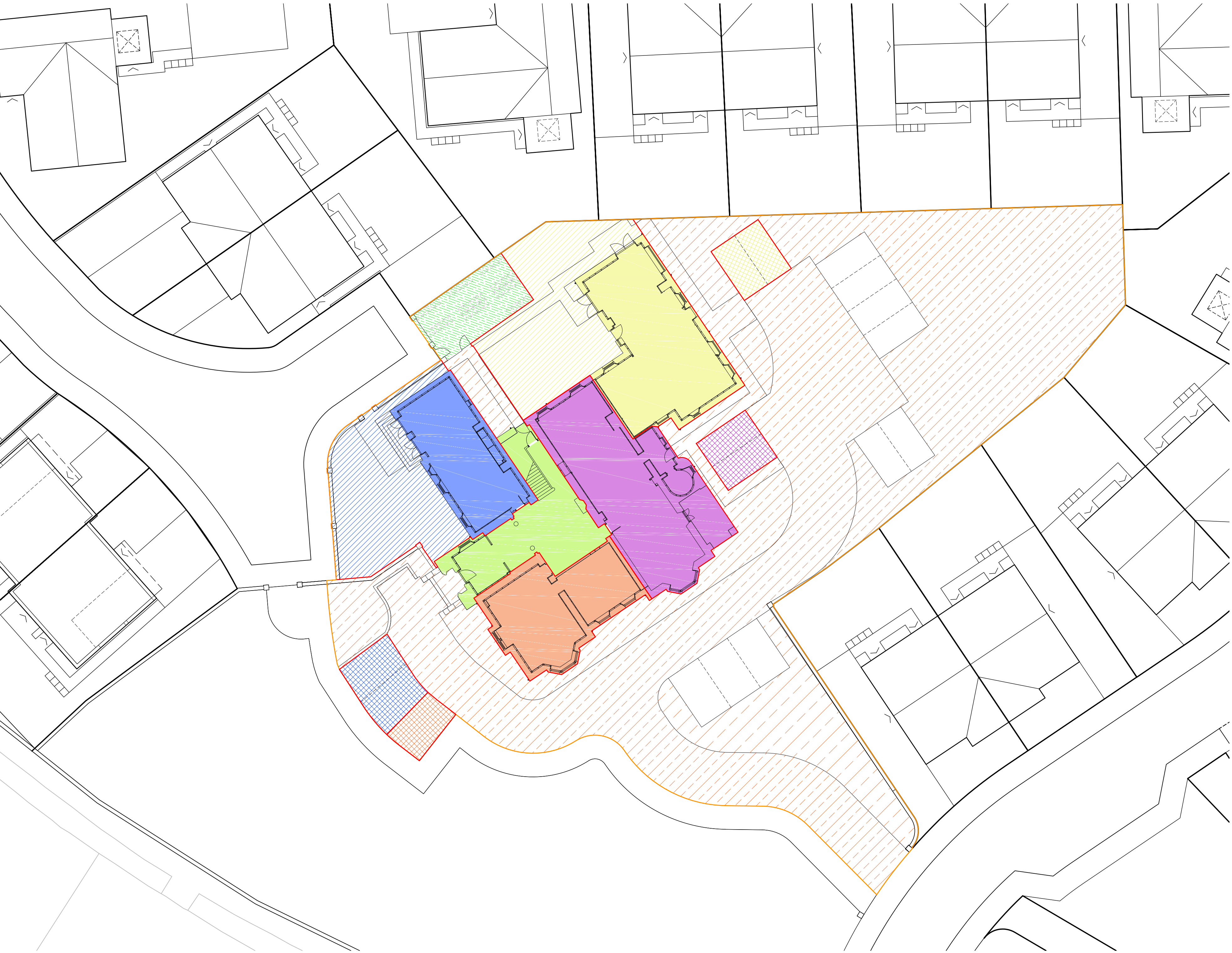
PROJECT / CLIENT:
Proposed Development at Forth Park, Kirkcaldy

DRAWING:	A1
Development Plan Approval	
Mews Block First Floor	

Drawn/alterred by:	Checked by:	Date:	Scales:
MW	-	12/11/20	1:200

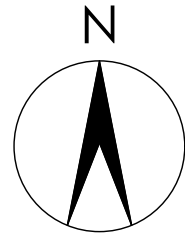
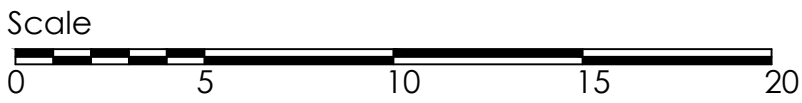
Site Code:	Job Code:	Drawing No.:	Revision:
043	DPA	003	-





LEGEND

- Boundary Extent of Mansion Grounds
- Individual Unit Boundary
- Factored Communal Space & Access
- Communal Entrance Hall and Circulation
- Communal Bin Store
- Unit 1
- Unit 2
- Unit 3
- Unit 4
- Unit 1 Parking Allocation
- Unit 2 Parking Allocation
- Unit 3 Parking Allocation
- Unit 4 Parking Allocation
- Unit 1 Garden
- Unit 4 Garden



Master Drawn by:	Last Revision Date:	Master Dwg No:	Master Revision:
-	-	-	-



## EASY LIVING HOMES

Eastfield Ind. Est. Glenrothes, Fife, KY7 4NS  
Tel: 01592 770020 Fax: 01592 807060 Web : [www.eld.uk.com](http://www.eld.uk.com)

Copyright in this design is reserved to Easy Living Developments and these drawings are supplied on the express condition that they are to be treated as confidential and are not to be copied photographically or otherwise or communicated to any third party without prior written consent of Easy Living Developments.

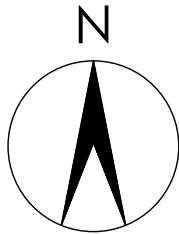
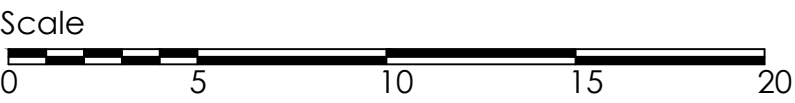
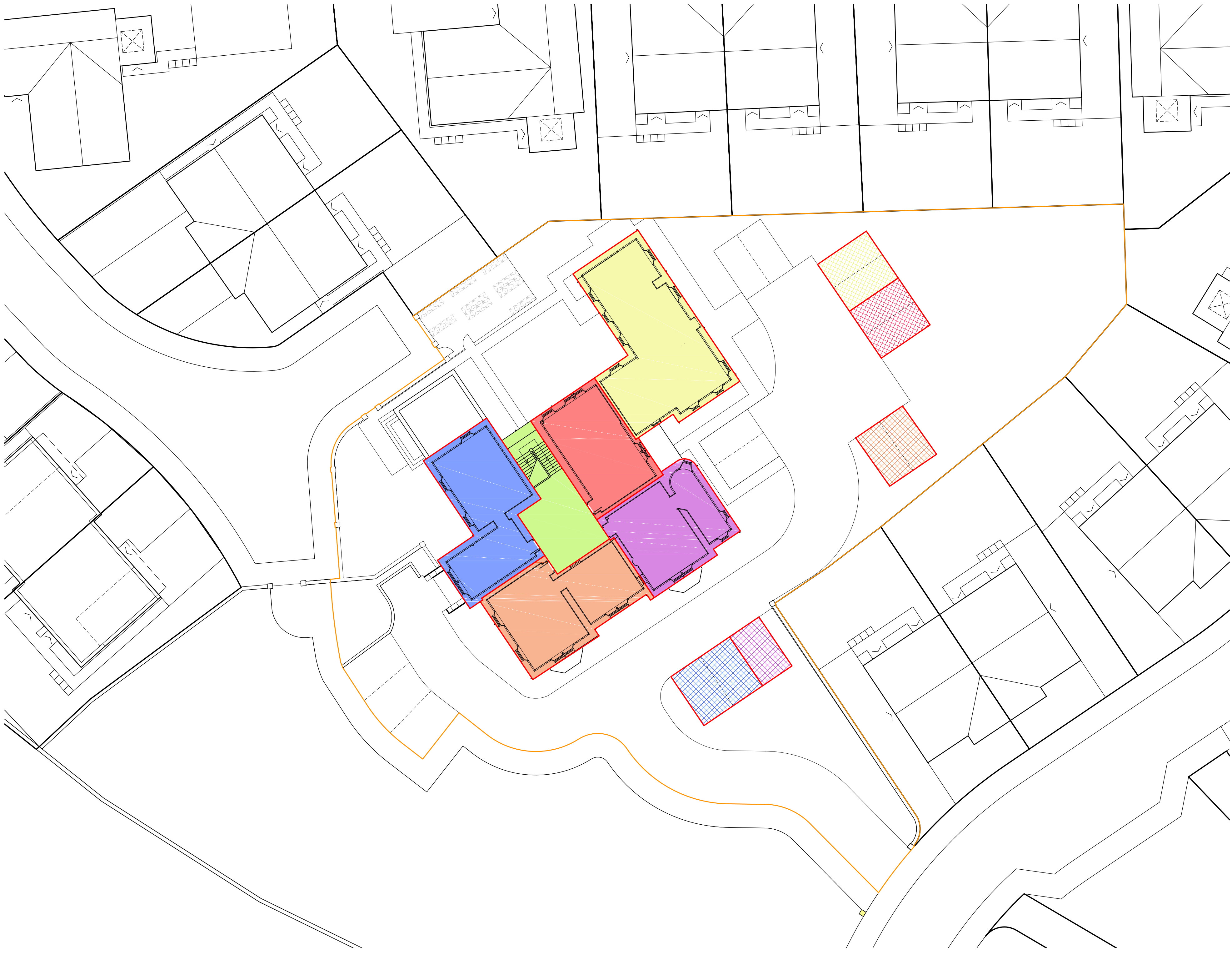
Date	Drawing Revision	Index	By

PROJECT / CLIENT:  
Proposed Development at  
Forth Park, Kirkcaldy

DRAWING:  
Development Plan Approval  
Mansion House Ground Floor

Drawn/alterd by:	Checked by:	Date:	Scales:
MW	-	12/11/20	1:200
Site Code:	Job Code:	Drawing No.:	Revision:
043	DPA	004	-





LEGEND

- Boundary Extent of Mansion Grounds
- Individual Unit Boundary
- Communal Entrance Hall and Circulation
- Unit 5
- Unit 6
- Unit 7
- Unit 8
- Unit 9
- Unit 5 Parking Allocation
- Unit 6 Parking Allocation
- Unit 7 Parking Allocation
- Unit 8 Parking Allocation
- Unit 9 Parking Allocation

Master Drawn by:	Last Revision Date:	Master Dwg No:	Master Revision:
-	-	-	-

# EASY LIVING HOMES

Eastfield Ind. Est. Glenrothes, Fife, KY7 4NS  
Tel: 01592 770020 Fax: 01592 807060 Web : www.eld.uk.com

Copyright in this design is reserved to Easy Living Developments and these drawings are supplied on the express condition that they are to be treated as confidential and are not to be copied photographically or otherwise or communicated to any third party without prior written consent of Easy Living Developments.

Date	Drawing Revision	Index	By

PROJECT / CLIENT:

Proposed Development at  
Forth Park, Kirkcaldy

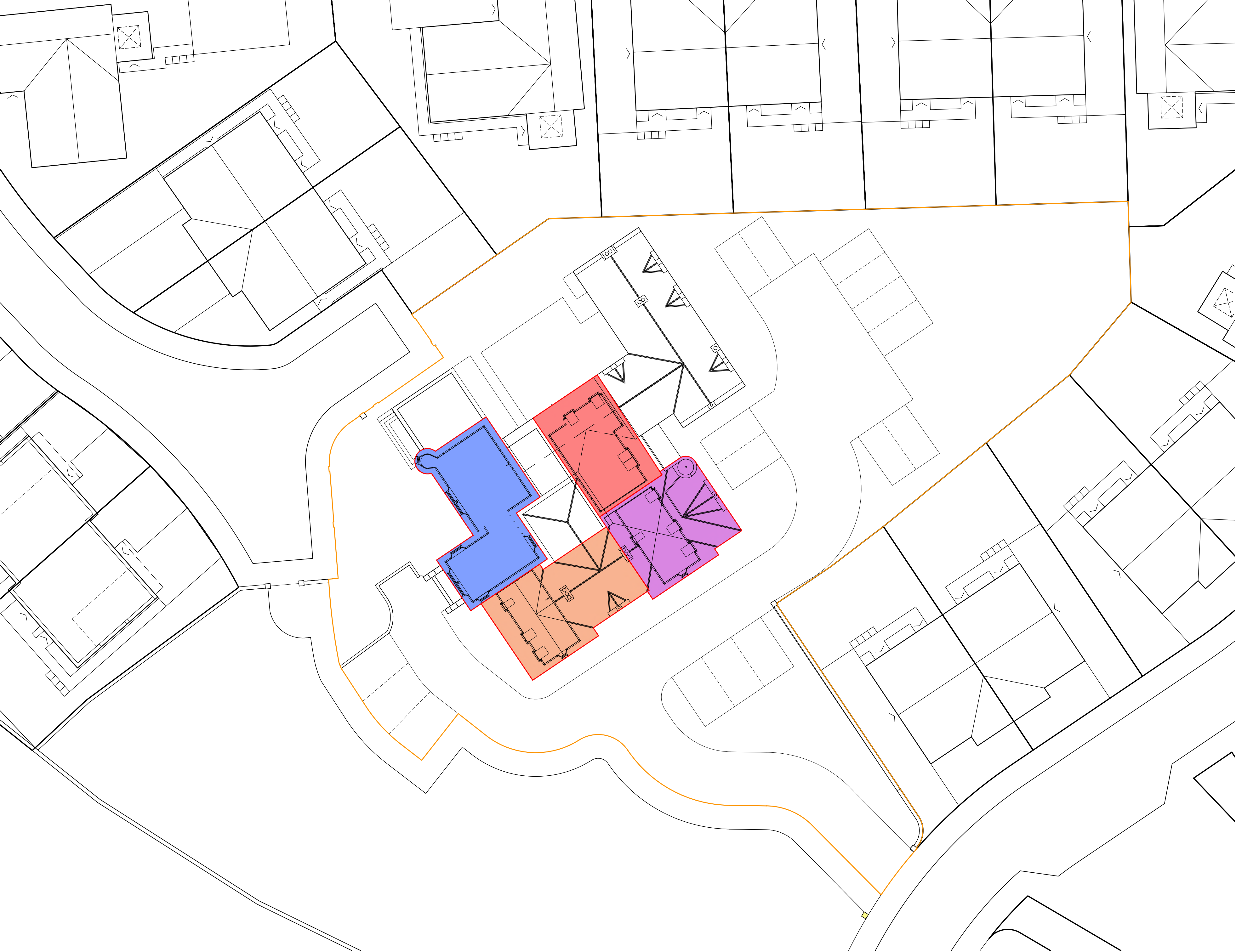
DRAWING:

Development Plan Approval

Mansion House First Floor

Drawn/alterd by:	Checked by:	Date:	Scales:
MW	-	12/11/20	1:200
Site Code:	Job Code:	Drawing No.:	Revision:
043	DPA	005	-





LEGEND

- Boundary Extent of Mansion Grounds
- Individual Unit Boundary
- Unit 5
- Unit 6
- Unit 7
- Unit 8

Master Drawn by:	Last Revision Date:	Master Dwg No:	Master Revision:
-	-	-	-



# EASY LIVING

HOMES

Eastfield Ind. Est. Glenrothes, Fife, KY7 4NS  
Tel: 01592 770020 Fax: 01592 807060 Web : www.eld.uk.com

Copyright in this design is reserved to Easy Living Developments and these drawings are supplied on the express condition that they are to be treated as confidential and are not to be copied photographically or otherwise or communicated to any third party without prior written consent of Easy Living Developments.

Date	Drawing Revision	Index	By
27/04/21	Legend amended	A	KHB

PROJECT / CLIENT:  
Proposed Development at  
Forth Park, Kirkcaldy

DRAWING:  
Development Plan Approval  
Mansion House Second Floor

Drawn/altered by:	Checked by:	Date:	Scales:
MW	-	12/11/20	1:200
Site Code:	Job Code:	Drawing No.:	Revision:
043	DPA	006	A