

The development registered under title ELN21784 and plots 34 to 93 and 117 to 119 within have been DPA approved by:

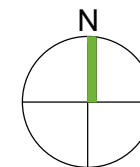
*D MacDonald - 29 April 2021*

David MacDonald (DPA Officer)

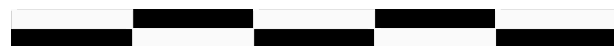


Key :

- Access and Service Routes (Roads and footpaths for adoption)
- Adoptable Verges
- Common Parts of the Development (Factored areas)
- Common Parts of the Development (Play area)
- Common Parts of the Development (Parking courtyards incl. visitor spaces)
- Block (of flats)
- Common Parts of the Development (Cycle stores)
- Bin Store (Common for private flats)
- Allocated parking spaces
- Disabled parking spaces
- Block Entrance Paths (Common for each block)
- Shared Access Path (Refer to plot numbers)
- Development boundary line
- Shared Private Driveway (Plots 60-63)
- Substation



SCALE 1:1250




0

100m

This is the plan referred to foregoing Deed of Conditions by Mactaggart & Mickel Homes Limited

- B Updated to reflect written DOC 15-03-2021
- A Updated to latest layout 26-01-2021

	Development: <b>PHASE.1B..LETHINGTON.GARDENS</b>	Drg no: <b>0183.1B.DPA</b>	Rev: <b>B</b>	1 Atlantic Quay Robertson Street Glasgow G2 8JB Tel: 0141 332 0001 Fax: 0141 248 4921  Web: <a href="http://www.macmic.co.uk">www.macmic.co.uk</a> E-mail: <a href="mailto:homes@macmic.co.uk">homes@macmic.co.uk</a>
	Drawing Title: <b>DPA : Phase 1B</b>	Drawn by: <b>CMCW</b>	Checked by: <b>VARIOUS</b>	