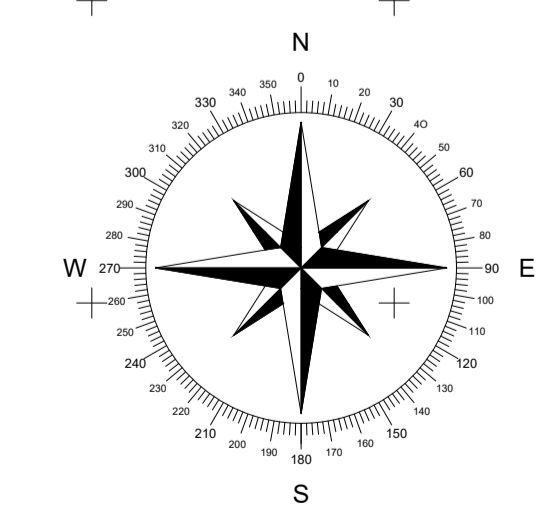
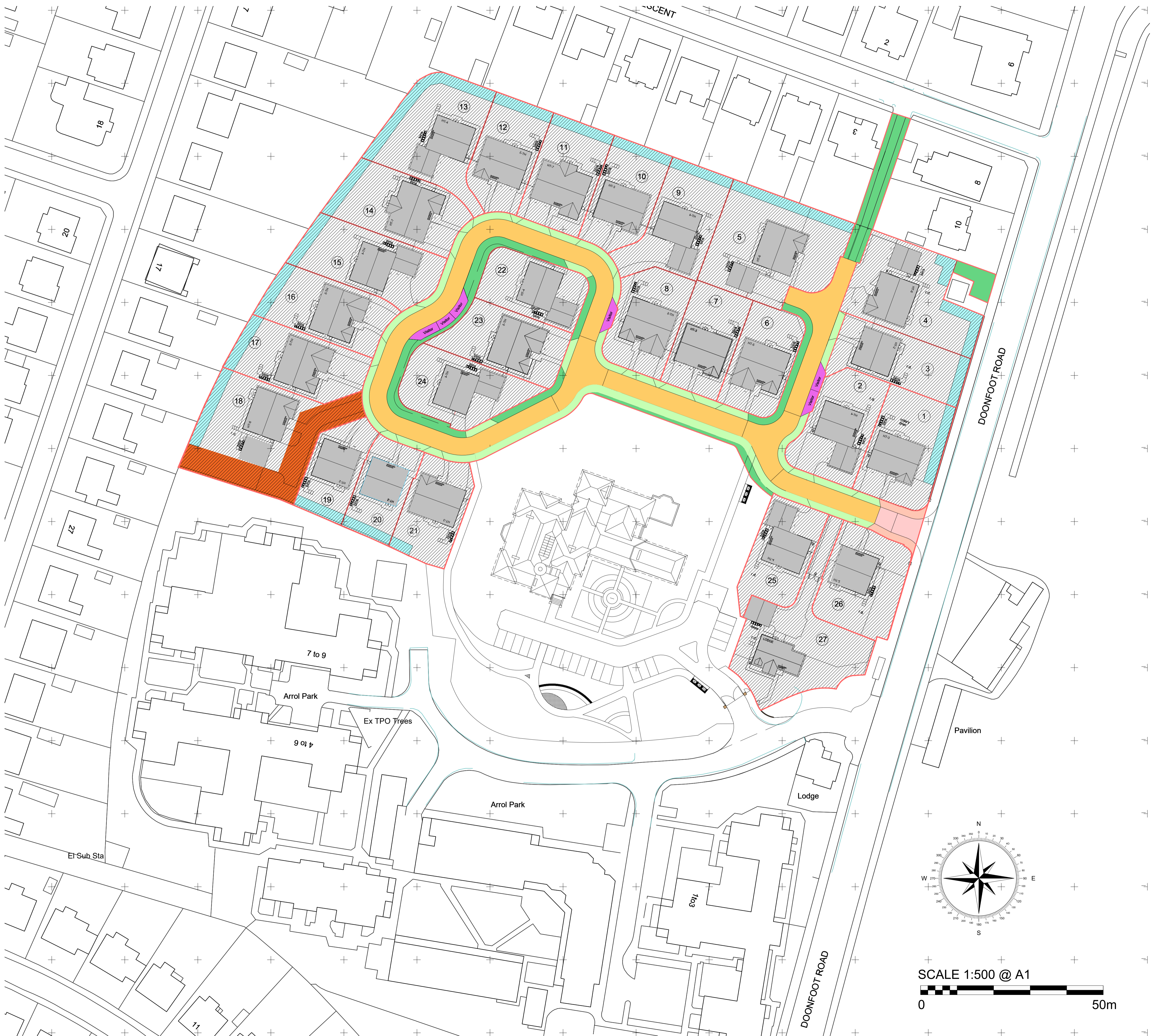


NOTE:
 All proprietary goods and materials are to be fitted in accordance with manufacturer's instructions, Codes of Practice and British Standards. All dimensions to be verified by the Contractor on site. Do not scale drawings, work to figured dimensions only.

© This drawing remains the Copyright of Fouin+Bell Architects Ltd. and may not be reproduced in whole or in any part without prior written permission.
 REVISION / DESCRIPTION / DATE

- LEGEND
- ADOPTED FOOTPATH
 - ADOPTED SHARED SURFACE
 - ADOPTED VISITOR CAR PARKING SPACES
 - EXTENT OF PLOT BOUNDARY
 - WAYLEAVE CORRIDOR MANAGED BY PLOT OWNER
 - ADOPTED ROAD
 - ADOPTED SERVICE STRIP
 - AMENITY SPACE MANAGED BY FACTOR
 - EXTENT OF FLAT/HOUSE
 - TREE BELT AREA

The development registered under title AYR126353 and plots 3 to 5, 16 to 21 and 24 within have been DPA approved by:
D MacDonald 23/03/2022
 David MacDonald (DPA Officer)



SCALE 1:500 @ A1
 0 50m



CLIENT		
Westpoint HOMES		
PROJECT		
RESIDENTIAL DEVELOPMENT DOONFOOT ROAD AYR		
SCALE@A1	DATE	
1:500	06-04-21	
DRAWN BY	CHECKED	STAGE
ip	IP	TITLES
DRAWING		
Development Plan Approval		
PROJECT NUMBER	DRAWING NUMBER	REVISION
20-141	(DPA)00	D