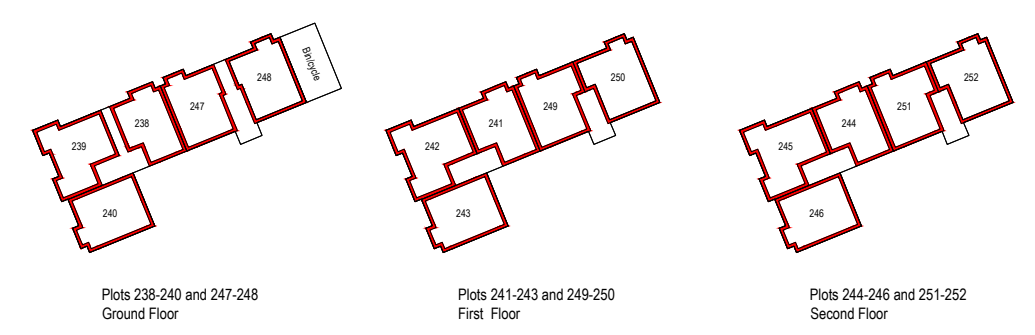


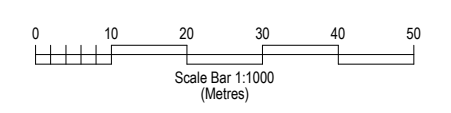
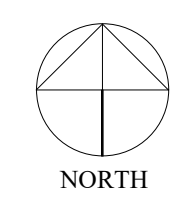
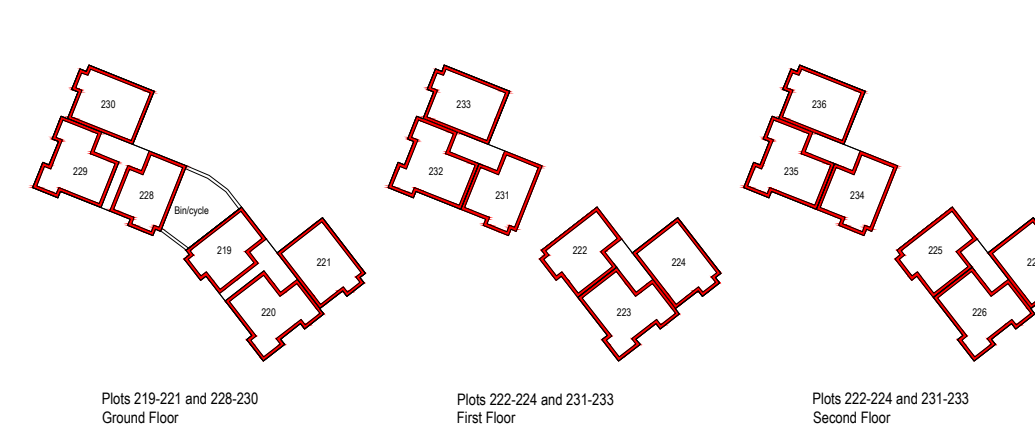
Block Plots 238-246 & 247-252



Block Plots 169-177 & 178-186



Block Plots 219-227 & 228-236



LEGEND

- Site Boundary
- Shared hardstanding 1 adopted & maintained by factor. (Orange) - Plots 146-148
- Shared hardstanding 2 adopted & maintained by factor. (Blue) - Plots 151-154
- Shared hardstanding 3 adopted & maintained by factor. (Peach cross hatch) - Plots 152-154
- Shared hardstanding 4 adopted & maintained by factor. (Cyan with black hatch) - Plots 155-157
- Shared hardstanding 5 adopted & maintained by factor. (Light Yellow) - Plots 256-257
- Shared hardstanding 6 adopted & maintained by factor. (Cyan) - Plots 275-277
- Shared hardstanding 7 adopted & maintained by factor. (Turquoise) - Plots 270-272
- Shared hardstanding 8 adopted & maintained by factor. (Brown cross hatch) - Plots 289-291
- Shared hardstanding 9 adopted & maintained by factor. (Mint Green cross hatch) - Plots 285-287
- Shared hardstanding 10 adopted & maintained by factor. (Purple) - Plots 301-302
- Shared hardstanding 11 adopted & maintained by factor. (Light Orange) - Plots 295-297 & 298-300
- Shared hardstanding 12 adopted & maintained by factor. (Light Red) - Plots 211-214
- Shared hardstanding 13 adopted & maintained by factor. (Indigo cross hatch) - Plots 216-218
- Shared hardstanding 14 adopted & maintained by factor. (Sky Blue) - Plots 187-189
- Shared hardstanding 15 adopted & maintained by factor. (Brown) - Plots 169-189
- Shared hardstanding courtyard 1 adopted & maintained by factor. (Light red with black hatch) - Plots 238-252
- Shared hardstanding courtyard 2 adopted & maintained by factor. (hot pink with black hatch) - Plots 169-186
- Shared hardstanding courtyard 3 adopted & maintained by factor. (Orange with black hatch) - Plots 219-227 and 228-236
- Shared soft landscaped area, paths, railings and bin/cycle store adopted & maintained by factor (Cyan with black hatch) - Plots 219-227 & 228-236
- Shared soft landscaped area, paths, railings and bin/cycle store adopted & maintained by factor. (Light Yellow with black hatch) - Plots 238-252
- Shared soft landscaped area, paths, railings and bin/cycle store adopted & maintained by factor. (Bright Yellow with black hatch) - Plots 169-186
- FibreNest distribution cabinet to be maintained by FibreNest. (Olive Green)

The Development registered under title MID174837 and plots 167, 168, 187 to 194, 201 to 236, 271 to 273, 277, 279, 281, 282, 284 to 309 and 311 within have been DPA approved.

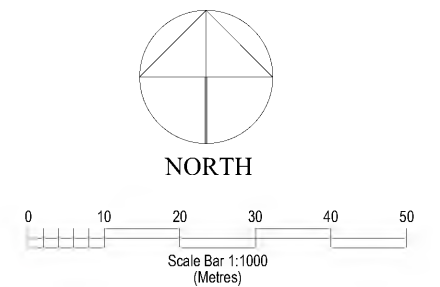
The Keeper - 24 November 2023

Keeper for the Registers of Scotland

Persimmon Homes

Persimmon Homes East Scotland
 Unit 1
 Wester Inch Business Park
 Old Well Court
 Bathgate
 West Lothian
 EH48 2TQ
 10th August 2021





- LEGEND**
- Site Boundary
 - Roadways, footways & parking adopted and maintained by City of Edinburgh Council Roads Department.
 - Public Open space & landscaping maintained by Factor. (Green)
 - Soft landscaped service strip adopted by City of Edinburgh Council Roads department and maintained by factor. (Yellow)
 - Shared hardstanding 1 adopted & maintained by factor. (Orange) - Plots 146-148
 - Shared hardstanding 2 adopted & maintained by factor. (Blue) - Plots 151-154
 - Shared hardstanding 3 adopted & maintained by factor. (Peach cross hatch) - Plots 152-154
 - Shared hardstanding 4 adopted & maintained by factor. (Cyan with black hatch) - Plots 155-157
 - Shared hardstanding 5 adopted & maintained by factor. (Light Yellow) - Plots 256-257
 - Shared hardstanding 6 adopted & maintained by factor. (Cyan) - Plots 275-277
 - Shared hardstanding 7 adopted & maintained by factor. (Turquoise) - Plots 270-272
 - Shared hardstanding 8 adopted & maintained by factor. (Brown cross hatch) - Plots 289-291
 - Shared hardstanding 9 adopted & maintained by factor. (Mint Green cross hatch) - Plots 285-287
 - Shared hardstanding 10 adopted & maintained by factor. (Purple) - Plots 301-302
 - Shared hardstanding 11 adopted & maintained by factor. (Light Orange) - Plots 295-297 & 298-300
 - Shared hardstanding 12 adopted & maintained by factor. (Light Red) - Plots 211-214
 - Shared hardstanding 13 adopted & maintained by factor. (Indigo cross hatch) - Plots 216-218
 - Shared hardstanding 14 adopted & maintained by factor. (Sky Blue) - Plots 187-189
 - Shared hardstanding 15 adopted & maintained by factor. (Brown) - Plots 169-189
 - Shared hardstanding courtyard 1 adopted & maintained by factor. (Light red with black hatch) - Plots 238-252
 - Shared hardstanding courtyard 1 adopted & maintained by factor. (hot pink with black hatch) - Plots 169-186
 - Shared hardstanding courtyard 2 adopted & maintained by factor. (Orange with black hatch) - Plots 219-227 and 228-236
 - Shared soft landscaped area, paths and bin/cycle store adopted & maintained by factor (Cyan with black hatch) - Plots 219-227 & 228-236
 - Shared soft landscaped area, paths and bin/cycle store adopted & maintained by factor. (Light Yellow with black hatch) - Plots 238-252
 - Shared soft landscaped area, paths and bin/cycle store adopted & maintained by factor. (Bright Yellow with black hatch) - Plots 169-186
 - FibreNest distribution cabinet to be maintained by FibreNest. (Olive Green)

Persimmon Homes
 Persimmon Homes East Scotland
 Unit 1
 Wester Inch Business Park
 Old Well Court
 Bathgate
 West Lothian
 EH48 2TQ
 10th August 2021

