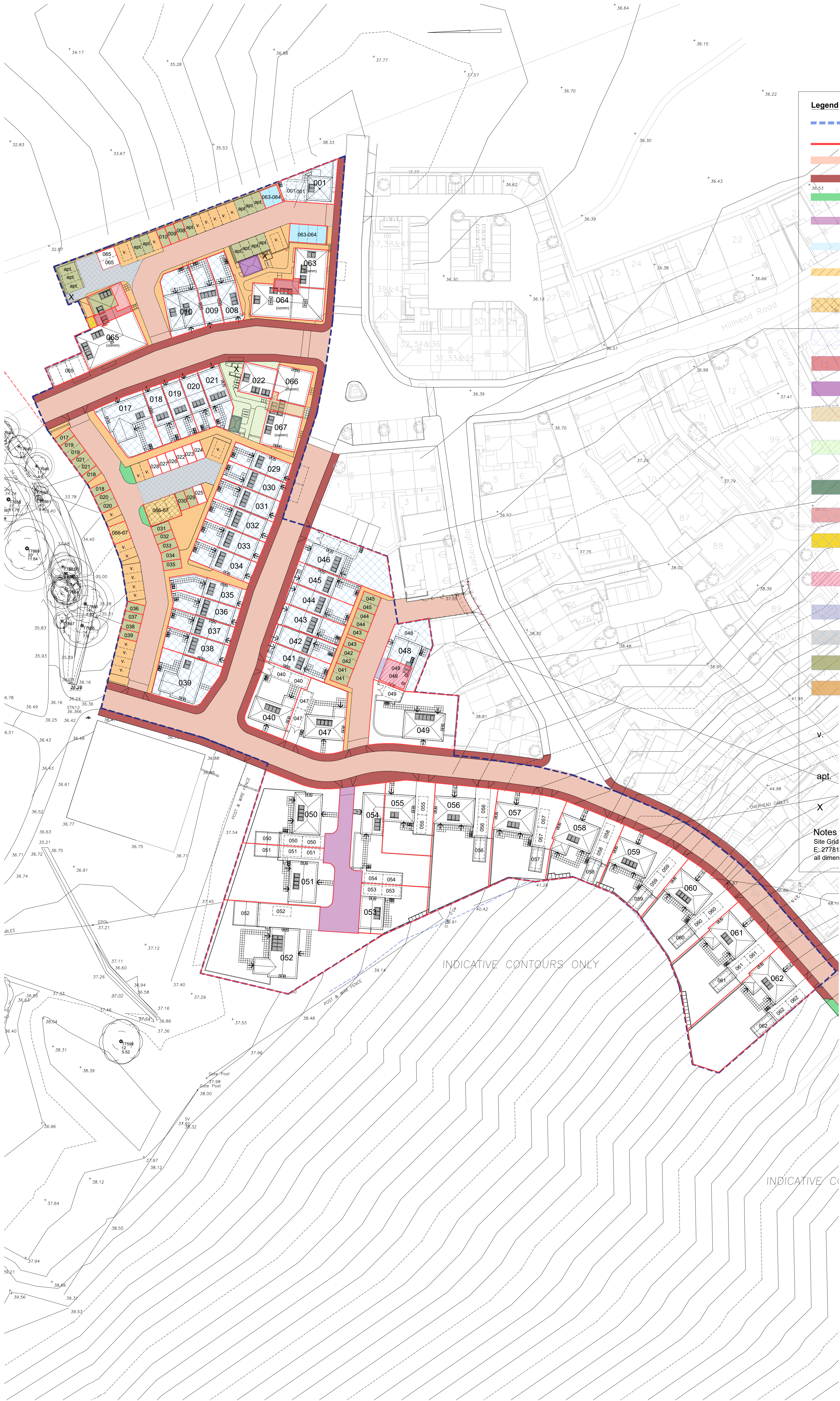


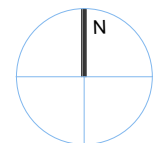
Drawing to be scaled for planning purposes only. Dimensions must not be scaled from this drawing for construction. All dimensions to be checked prior to commencing work or prior to any components being manufactured. Any discrepancy to be reported. All work and material to comply fully with all current & relevant British Standards Codes of Practice, building regulations, IEE regulations and all HSE acts.

Revisions		
Rev	Date	Comment
B	Nov 24	Amended in line with original site purchase titles between PFPS and CRE. Updated to construction stage site plan layout
C	April 25	Amended per client/legal comments
D	May 25	Legend for common areas plots 22-26/66/67 amended



- Legend**
- Development boundary
 - Individual plot boundary
 - Adopted roads
 - Adopted footpaths
 - Adopted verge
 - Shared private road/driveway to Plots 50-55 inclusive
 - Shared commercial parking spaces to Plots 63-64 inclusive
 - Shared commercial parking spaces to Plots 66-67 inclusive (open spaces)
 - Car Barn Parking spaces Shared commercial parking spaces to Plots 66-67 inclusive (open spaces)
 - Units owned by Castle Rock Edinvar
 - Common stairwell to apartments - owned by Castle Rock Edinvar
 - Bin/Cycle store in common ownership of plots 02-07 inclusive
 - Common stairwell to ORS apartments - plots 22-28 inclusive - Shared Ownership
 - External spaces in common ownership of plots 22-28 inclusive and Plots 66&67 (Hard and soft landscaping to internal courtyards)
 - Bin/Cycle store in common ownership of plots 22-28 inclusive
 - Common bin/cycle storage to apartments plots 11-16 - owned by Castle Rock Edinvar
 - Common entrance to apartments plots 11-16 and commercial unit plot 65 - owned by Castle Rock Edinvar
 - Car parking (2-spaces) for plot 49 within structure of plot 48 (flat over)
 - Servitude rights over external space - Plot 49 access to car parking
 - Private car parking area road surface PFPS ownership, factored to all properties
 - Car parking spaces owned by CRE
 - External spaces in PFPS ownership, factored to all properties (Hard and soft landscaping to internal courtyards)
 - visitor parking space - in ownership of PFPS, factored to all properties
 - Apartment parking space - common to plots - 02-07 & 11 & 16 inclusive - in ownership of Castle Rock Edinvar
 - External bin storage area - Commercial Units

Notes :
Site Grid Reference: NH778501
E: 277813, N: 850115
all dimensions 'or' thereby;



The Development to be registered under titles INV56381 & INV56382 and plots 22 to 28, 40, 47 and 49 to 67 within have been DPA approved.

The Keeper - 20 May 2025

Keeper for the Registers of Scotland

MGA ARCHITECTURE
www.mgaarchitecture.co.uk

Project
**Mixed Use Development
Tornagrain Phase 5
PFP Scotland**

Drawing
**Development Plan Approval
Ground Floor Level**

Date **Oct 24** Scales **1:500@A1**

Project Nr. **1421** Drawing Nr. **DPA-001**Rev. **D**

22 Rubislaw Terrace, Aberdeen, AB10 1XE - 01224 643117 - office@m-g-a.co.uk
This drawing is copyright of Michael Gilmour Associates Ltd. ©

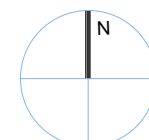
Drawing to be scaled for planning purposes only. Dimensions must not be scaled from this drawing for construction. All dimensions to be checked prior to commencing work or prior to any components being manufactured. Any discrepancy to be reported. All work and material to comply fully with all current & relevant British Standards Codes of Practice, building regulations, IEE regulations and all HSE acts.

Revisions		
Rev	Date	Comment
B	Nov 24	Amended in line with original site purchase titles between PFPS and CRE. Updated to construction stage site plan layout
C	April 25	Amended per client/legal comments
D	May 25	Legend for common areas plots 22-26/66/67 amended

Legend

- Development boundary
- Individual plot boundary
- Adopted roads
- Adopted footpaths
- Adopted verge
- Shared private road/driveway to Plots 50-55 inclusive
- Shared commercial parking spaces to Plots 63-64 inclusive
- Shared commercial parking spaces to Plots 66-67 inclusive (open spaces)
- Car Barn Parking spaces
Shared commercial parking spaces to Plots 66-67 inclusive (open spaces)
- Units owned by Castle Rock Edinvar
- Common stairwell to apartments - owned by Castle Rock Edinvar
- Bin/Cycle store in common ownership of plots 02-07 inclusive
- Common stairwell to ORS apartments - plots 22-28 inclusive - Shared Ownership
- External spaces in common ownership of plots 22-28 inclusive and Plots 66&67
(Hard and soft landscaping to internal courtyards)
- Bin/Cycle store in common ownership of plots 22-28 inclusive
- Common bin/cycle storage to apartments plots 11-16 - owned by Castle Rock Edinvar
- Common entrance to apartments plots 11-16 and commercial unit plot 65 - owned by Castle Rock Edinvar
- Car parking (2-spaces) for plot 49 within structure of plot 48 (flat over)
- Servitude rights over external space - Plot 49 access to car parking
- Private car parking area road surface
PFPS ownership, factored to all properties
- Car parking spaces owned by CRE
- External spaces in PFPS ownership, factored to all properties
(Hard and soft landscaping to internal courtyards)
- visitor parking space - in ownership of PFPS, factored to all properties
- Apartment parking space - common to plots - 02-07 & 11 & 16 inclusive - in ownership of Castle Rock Edinvar
- External bin storage area - Commercial Units

Notes :
Site Grid Reference: NH778501
E: 277813 , N: 850115
all dimensions 'or' thereby;



INDICATIVE CONTOURS ONLY

INDICATIVE CO

MGA ARCHITECTURE
www.mgaarchitecture.co.uk

Project
Mixed Use Development
Tornagrain Phase 5
PFPS Scotland

Drawing
Development Plan Approval
First Floor Level

Date **Oct 24** Scales **1:500@A1**

Project Nr. **1421** Drawing Nr. **DPA-002** Rev. **D**

22 Rubislaw Terrace, Aberdeen, AB10 1XE - 01224 643117 - office@m-g-a.co.uk
This drawing is copyright of Michael Gilmour Associates Ltd. ©

0m 10m 20m
Scale 1:500

Drawing to be scaled for planning purposes only. Dimensions must not be scaled from this drawing for construction. All dimensions to be checked prior to commencing work or prior to any components being manufactured. Any discrepancy to be reported. All work and material to comply fully with all current & relevant British Standards Codes of Practice, building regulations, IEE regulations and all HSE acts.

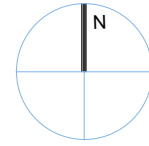
Revisions		
Rev	Date	Comment
B	Nov 24	Amended in line with original site purchase titles between PFPS and CRE. Updated to construction stage site plan layout.
C	April 25	Amended per client/legal comments
D	May 25	Legend for common areas plots 22-26/66/67 amended

Legend

- Development boundary
- Individual plot boundary
- Adopted roads
- Adopted footpaths
- Adopted verge
- Shared private road/driveway to Plots 50-55 inclusive
- Shared commercial parking spaces to Plots 63-64 inclusive
- Shared commercial parking spaces to Plots 66-67 inclusive (open spaces)
- Car Barn Parking spaces
- Shared commercial parking spaces to Plots 66-67 inclusive (open spaces)
- Units owned by Castle Rock Edinvar
- Common stairwell to apartments - owned by Castle Rock Edinvar
- Bin/Cycle store in common ownership of plots 02-07 inclusive
- Common stairwell to ORS apartments - plots 22-28 inclusive - Shared Ownership
- External spaces in common ownership of plots 22-28 inclusive and Plots 66&67 (Hard and soft landscaping to internal courtyards)
- Bin/Cycle store in common ownership of plots 22-28 inclusive
- Common bin/cycle storage to apartments plots 11-16 - owned by Castle Rock Edinvar
- Common entrance to apartments plots 11-16 and commercial unit plot 65 - owned by Castle Rock Edinvar
- Car parking (2-spaces) for plot 49 within structure of plot 48 (flat over)
- Servitude rights over external space - Plot 49 access to car parking
- Private car parking area road surface PFPS ownership, factored to all properties
- Car parking spaces owned by CRE
- External spaces in PFPS ownership, factored to all properties (Hard and soft landscaping to internal courtyards)
- visitor parking space - in ownership of PFPS, factored to all properties
- Apartment parking space - common to plots - 02-07 & 11 & 16 inclusive - in ownership of Castle Rock Edinvar
- External bin storage area - Commercial Units

Notes :

Site Grid Reference: NH778501
E: 277813 , N: 850115
all dimensions 'or' thereby;



INDICATIVE CONTOURS ONLY

INDICATIVE CO

MGA ARCHITECTURE
www.mgaarchitecture.co.uk

Project
Mixed Use Development
Tornagrain Phase 5
PFPS Scotland

Drawing
Development Plan Approval
Second Floor Level

Date **Oct 24** Scales **1:500@A1**

Project Nr. **1421** Drawing Nr. **DPA-003** Rev. **D**

22 Rubislaw Terrace, Aberdeen, AB10 1XE - 01224 643117 - office@m-g-a.co.uk
This drawing is copyright of Michael Gilmour Associates Ltd. ©

0m 10m 20m
Scale 1:500