



SITE PLAN (SCALE 1:500)

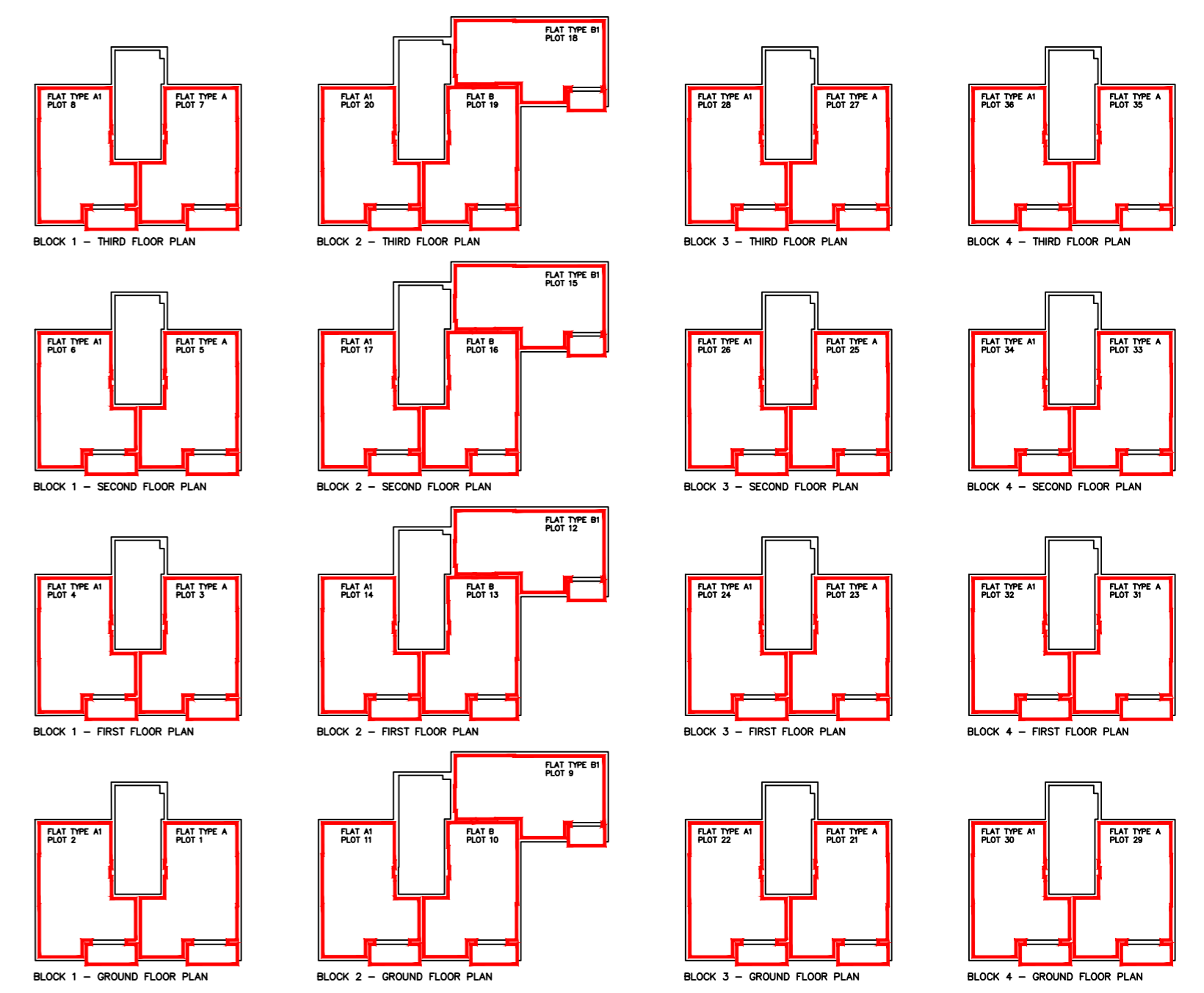
The development registered under title AYR62120 and plots 1 to 36 within have been DPA approved by:
D MacDonald - 2 Feb 2021
 David MacDonald (DPA Officer)

LEGEND

- CYAN - DENOTES DEVELOPMENT BOUNDARY
- RED - DENOTES PLOT BOUNDARY
- LIGHT GREEN - DENOTES OPEN SPACE COMMUNALLY OWNED AND MAINTAINED BY FACTOR
- DARK GREEN - DENOTES SHORE LINE COMMUNALLY OWNED
- LIGHT PINK - DENOTES PRIVATE ROADS COMMUNALLY OWNED AND MAINTAINED BY FACTOR
- PEACH - DENOTES FOOTPATHS COMMUNALLY OWNED AND MAINTAINED BY FACTOR
- ORANGE - DENOTES COMMUNAL STAIRWELL MAINTAINED BY FACTOR
- YELLOW - DENOTES BIN STORE COMMUNALLY OWNED BY BLOCK 1 AND MAINTAINED BY FACTOR
- PURPLE - DENOTES BIN STORE COMMUNALLY OWNED BY BLOCK 2 AND MAINTAINED BY FACTOR
- DARK PINK - DENOTES BIN STORE COMMUNALLY OWNED BY BLOCK 3 AND MAINTAINED BY FACTOR
- DARK BLUE - DENOTES BIN STORE COMMUNALLY OWNED BY BLOCK 4 AND MAINTAINED BY FACTOR
- DENOTES SERVICE WAYLEAVE

NOTES
DO NOT SCALE DRAWINGS

SCALE BAR (m)
0 5 10 15 20 25 30 35



PLOT PLANS (SCALE 1:500)

REVISIONS

--	--

ogilvie
HOMES

Ogilvie Homes Ltd, Ogilvie House,
 Pirnhall Business Park,
 Stirling, FK7 8ES
 Tel: 01786 811811 Fax: 01786 816935

PROJECT RESIDENTIAL DEVELOPMENT SITE AT SHORE ROAD, SKELMORLIE			
DRAWING MASTER DEED OF CONDITIONS PLAN PHASE 2			
SCALE 1/500 @ A2			
DATE 01/2021	JOB No. J0116	DRAWING No. MDOC-002	REV. -
DRAWN BY CMcG			