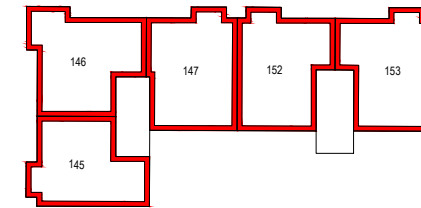
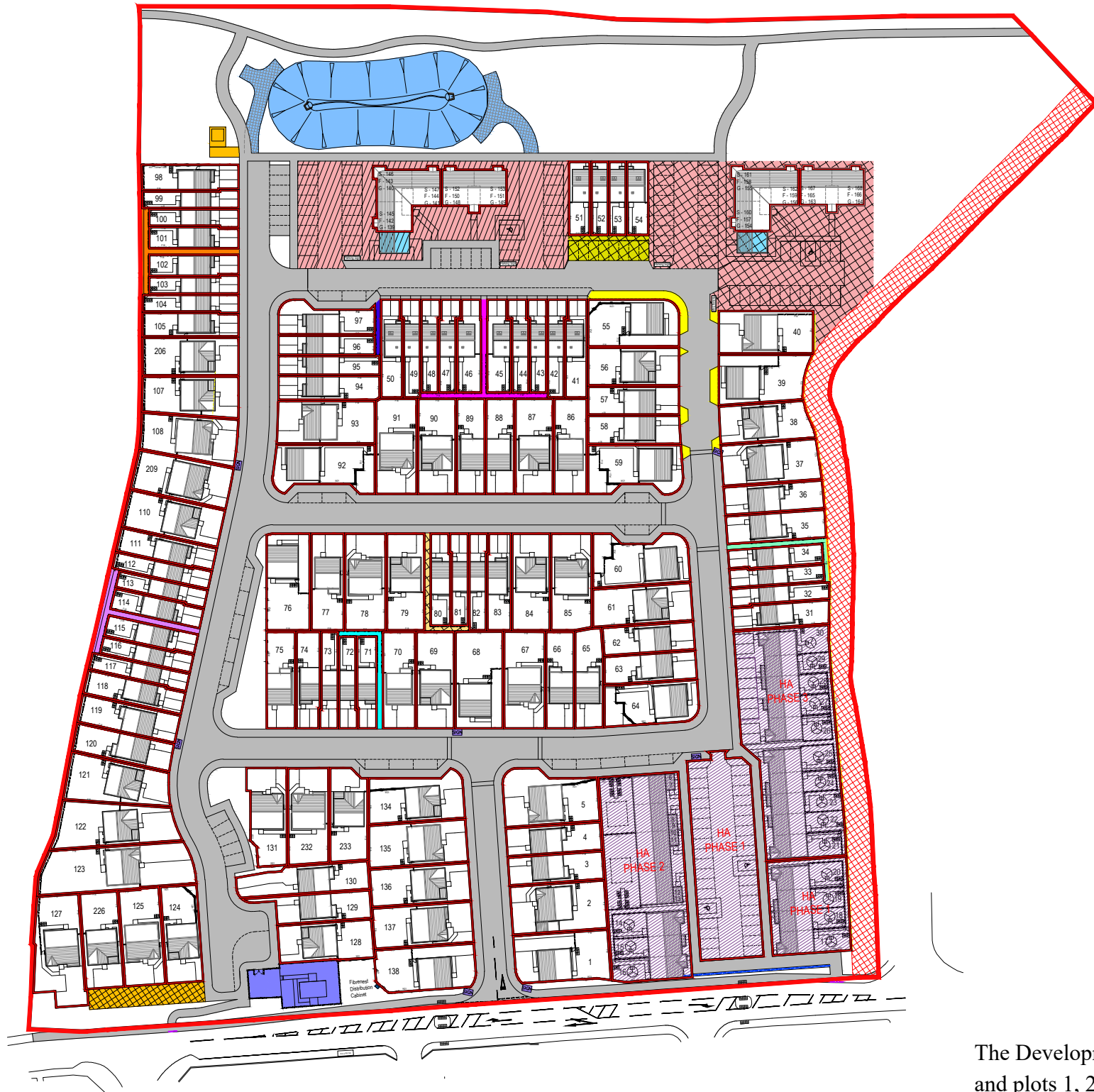
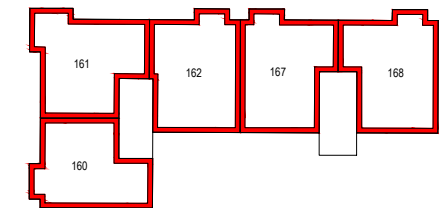


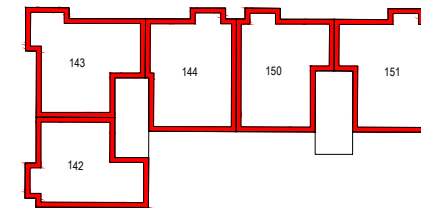
LEGEND	
	Site Boundary
	Roadways, footways & parking adopted and maintained by Falkirk Council Roads Department. (Grey)
	Gas Governor, hard standing and landscaping owned and maintained by Scottish Gas. wayleave access to FibreNest & Scottish Water. (Dark Blue)
	Sub Station, and hard standing owned and maintained by Energy Assets. (Light Orange)
	Private hard standing area shared between plots 154-168 maintained by factor, wayleave access to FibreNest. (Pink with Checked Black Hatch)
	Private hard standing area shared between plots 139-153 maintained by factor. (Pink with Diagonal Black Hatch)
	Private bin/cycle store for plots 154-168 maintained by factor. (Cyan with Checked Black Hatch)
	Private bin/cycle store for plots 139-153 adopted and maintained by factor. (Cyan with Diagonal Black Hatch)
	Private hard standing area shared between plots 95-104 maintained by factor, wayleave access to FibreNest. (Orange)
	Private hard standing area shared between plots 32-34 maintained by factor, wayleave access to FibreNest. (Turquoise)
	Private hard standing area shared between plots 95-97 maintained by factor, wayleave access to FibreNest. (Dark Purple)
	FibreNest distribution cabinet location, area maintained by factor. (Blue)
	Suds Basin and access track adopted and maintained by Scottish Water (Light Blue).
	Scottish Water Sewer Wayleave (Red Checked Hatch)
	Service strip adopted by Falkirk Council Roads Department and maintained by associated plot. (Yellow)
	Private hard standing area shared between plots 51-54 maintained by factor, wayleave access to FibreNest. (Light Green with Checked Black Hatch)
	Private hard standing area shared between plots 124-127 maintained by factor, wayleave access to FibreNest. (Light Orange with Checked Black Hatch)
	Private hard standing area shared between plots 71-73 maintained by factor, wayleave access to FibreNest. (Cyan)
	Private hard standing area shared between plots 112-117 maintained by factor, wayleave access to FibreNest. (Light Purple)
	Private hard standing area shared between plots 80-82 maintained by factor, wayleave access to FibreNest. (Peach with Checked Black Hatch)
	Private hard standing area shared between plots 42-49 maintained by factor, wayleave access to FibreNest. (Dark Pink)
	Shared hard and Landscaping maintained by Housing Association including wayleave access to FibreNest (Purple Diagonal Hatch)



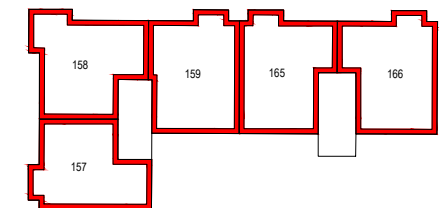
Plots 145 - 147 & 152 - 153  
Second Floor



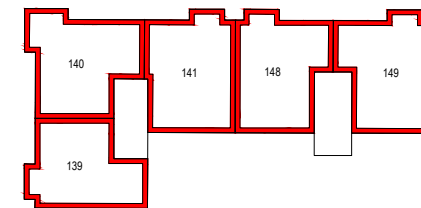
Plots 160 - 162 & 167 - 168  
Second Floor



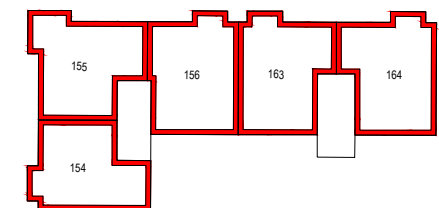
Plots 142 - 144 & 150 - 151  
First Floor



Plots 157 - 159 & 165 - 166  
First Floor



Plots 139 - 141 & 148 - 149  
Ground Floor



Plots 154 - 156 & 163 - 164  
Ground Floor

The Development registered under title STG38060 and plots 1, 2, 124, 125, 126, 127, 128 & 130 within have been DPA approved.

*The Keeper - 06 October 2023*

Keeper for the Registers of Scotland

## Persimmon Homes

Persimmon Homes East Scotland  
Unit 1  
Wester Inch Business Park  
Old Well Court  
Bathgate  
West Lothian  
EH48 2TQ  
26th January 2018

