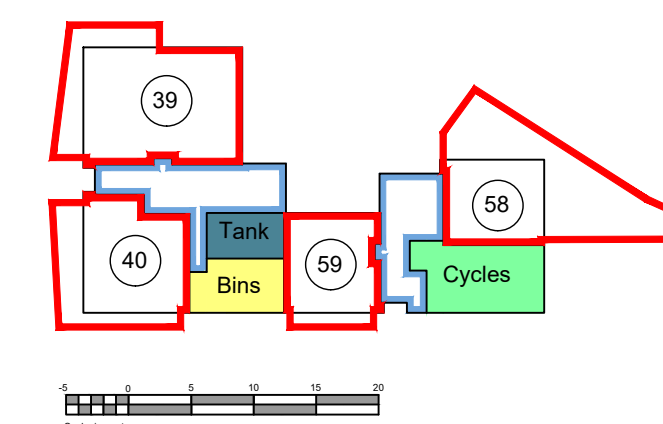
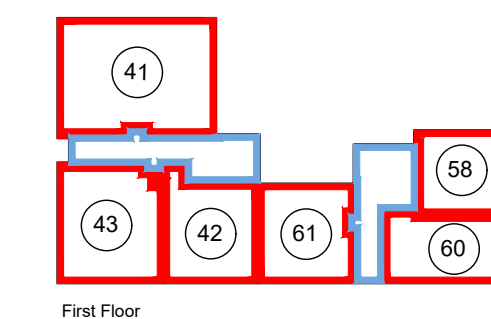
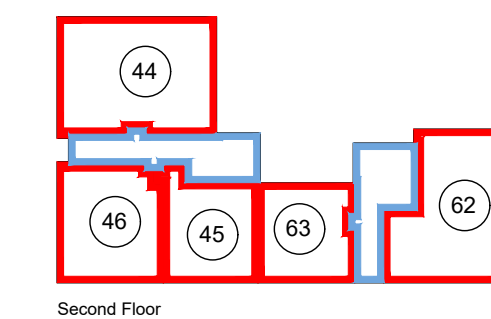
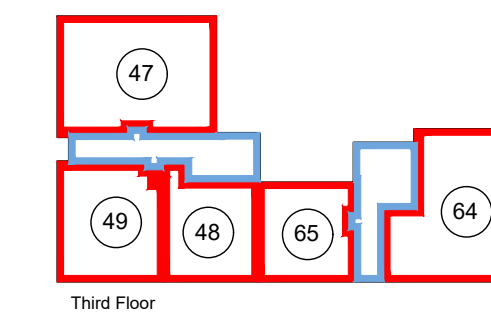
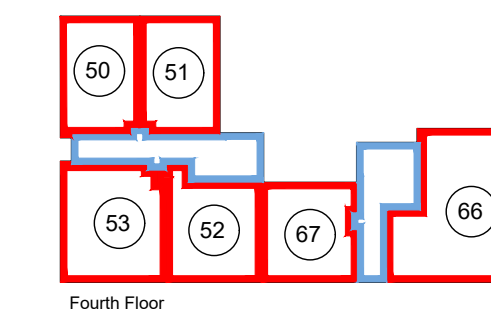
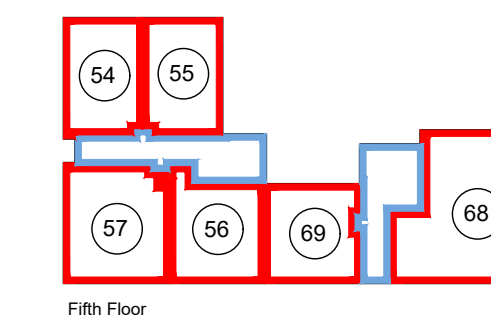


-5 0 5 10 15 20 25 30
Scale in metres



- Plot Boundary
- Site Boundary
- 28 Plot Number
- Common Landscaping
- Common Footpath
- Common Adoptable Footpath
- Cycle Store - Block A
- Cycle Store - Block B
- Cycle Store - Block C
- Bin Store - Block A
- Bin Store - Block B
- Bin Store - Block C
- Plant Room serving Blocks A-C
- Tank Room serving Block A-C
- Common Areas
- Common Adoptable Roadway
- Common Car Parking
- Common Adoptable Car Parking
- Substation
- Gas Governor

The Development registered under title MID221124 and plots 1 to 69 within have been DPA approved.

The Keeper - 08 January 2025

Keeper for the Registers of Scotland



28, CRAMOND ROAD SOUTH, EDINBURGH EH4 6AB
tel. 0131 336 2181 fax. 0131 336 4037 e-mail arch@jsmart.co.uk

