

Drawing to be scaled for Planning purposes only. Dimensions must not be scaled from this drawing for construction. All dimensions to be checked prior to commencing work or prior to any components being manufactured. Any discrepancy to be reported. All work and material to comply fully with all current & relevant British Standards Codes of Practice, building regulations, IEE regulations and all HSE acts.

Revisions		
Rev	Date	Comment
B	June 23	Updated per legal and Moray Estate comments
C	Aug 23	Lagnachree footpath hatch updated
D	July 24	Allocated parking spaces for plots 53-60
E	Jan 25	Plot 55-60 external works corner amended to CRE ownership
F	May 25	Plot 57/58 numbering corrected per construction plot numbering

The Development registered under titles INV54150 and INV54151 and plots 13 to 15, 19, 34 to 39, 41, 53 to 68 and blocks 1 to 6, 22 to 33 and 42 to 52 within have been DPA approved.

*The Keeper - 03 June 2025*

Keeper for the Registers of Scotland

Legend

Development boundary

Individual plot boundary

Adopted roads

Adopted footpaths

Adopted verge

Visitor Parking  
Plots 53-60(inclusive)

Common Area External Areas  
Plots 53-60(inclusive)

Common Area Bin Store  
Plots 53-60(inclusive)

Common Stairwell - Plots 53-60(inclusive)

Owned and maintained by Tornagrain Owners  
Association

Parking space (1no) for Plot 33 within FOG  
block plot 48

Owned by Castle Rock Edinvar

Owned by CRE with access rights to plots  
07&08 for access

Notes :

Site Grid Reference: NH783506  
E: 278389 N: 850607  
all dimensions to thereby;

D P A



MGA ARCHITECTURE  
www.mgaarchitecture.co.uk

Project  
Residential Development  
Blocks 20-21 Tornagrain  
PFP Developments

Drawing  
Site Layout  
DPA Plan - GF Layout

Date Nov 22 Scales 1:500@A1 Rev F

Project Nr. 1374 Drawing Nr. DPA001

22 Rubislaw Terrace, Aberdeen, AB10 1XE - 01224 643117 - office@m-g-a.co.uk  
This drawing is copyright of Michael Gilmore Associates Ltd. ©

0m 10m 20m  
Scale 1:500



Drawing to be scaled for Planning purposes only. Dimensions must not be scaled from this drawing for construction. All dimensions to be checked prior to commencing work or prior to any components being manufactured. Any discrepancy to be reported. All work and material to comply fully with all current & relevant British Standards Codes of Practice, building regulations, IEE regulations and all HSE acts.

Revisions		
Rev	Date	Comment
B	June 23	Updated per legal and Moray Estate comments
C	Aug 23	Lagnachree footpath hatch updated
D	Jan 25	Plot 55-60 external works corner amended to CRE ownership
E	May 25	Plots 57/58 numbering corrected per construction plot numbering

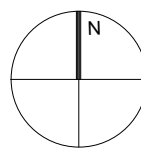


**Legend**

- Development boundary
- Individual plot boundary
- Adopted roads
- Adopted footpaths
- Adopted verge
- Visitor Parking  
Plots 53-60(inclusive)
- Common Area External Areas  
Plots 53-60(inclusive)
- Common Area Bin Store  
Plots 53-60(inclusive)
- Common Stairwell - Plots 53-60(inclusive)
- Owned and maintained by Tornagrain Owners Association
- Parking space (1no) for Plot 33 within FOG block plot 48
- Owned by Castle Rock Edinvar
- Owned by CRE with access rights to plots 07&08 for access

**Notes :**

Site Grid Reference: NH783506  
E: 278389 N: 850607  
all dimensions 'or thereby';



**D P A**



**MGA ARCHITECTURE**  
www.mgaarchitecture.co.uk

Project  
**Residential Development  
Blocks 20-21 Tornagrain  
PFP Developments**

Drawing  
**Site Layout  
DPA Plan - First Floor Level**

Date **Nov 22** Scales **1:500@A1** Rev **E**

Project Nr. **1374** Drawing Nr. **DPA002**

Scale 1:500  
0m 10m 20m

22 Rubislaw Terrace, Aberdeen, AB10 1XE - 01224 643117 - office@m-g-a.co.uk  
This drawing is copyright of Michael Gilmour Associates Ltd. ©



Drawing to be scaled for Planning purposes only. Dimensions must not be scaled from this drawing for construction. All dimensions to be checked prior to commencing work or prior to any components being manufactured. Any discrepancy to be reported. All work and material to comply fully with all current & relevant British Standards Codes of Practice, building regulations, IEE regulations and all HSE acts.

Revisions		
Rev	Date	Comment
B	June 23	Updated per legal and Moray Estate comments
C	Aug 23	Lagnachree footpath hatch updated
D	Jan 25	Plot 55-60 external works corner amended to CRE ownership

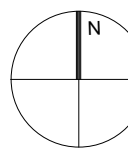


**Legend**

- Development boundary
- Individual plot boundary
- Adopted roads
- Adopted footpaths
- Adopted verge
- Visitor Parking  
Plots 53-60(inclusive)
- Common Area External Areas  
Plots 53-60(inclusive)
- Common Area Bin Store  
Plots 53-60(inclusive)
- Common Stairwell - Plots 53-60(inclusive)
- Owned and maintained by Tornagrain Owners Association
- Parking space (1no) for Plot 33 within FOG block plot 48
- Owned by Castle Rock Edinvar
- Owned by CRE with access rights to plots 07&08 for access

**Notes :**

Site Grid Reference: NH783506  
E: 278389 N: 850607  
all dimensions to thereby;



**D P A**



**MGA ARCHITECTURE**  
www.mgaarchitecture.co.uk

Project  
**Residential Development  
Blocks 20-21 Tornagrain  
PFP Developments**

Drawing  
**Site Layout  
DPA Plan - Second Floor Level**

Date **Nov 22** Scales **1:500@A1** Rev **D**

Project Nr. **1374** Drawing Nr. **DPA003**

Scale 1:500

22 Rubislaw Terrace, Aberdeen, AB10 1XE - 01224 643117 - office@m-g-a.co.uk  
This drawing is copyright of Michael Gilmour Associates Ltd. ©