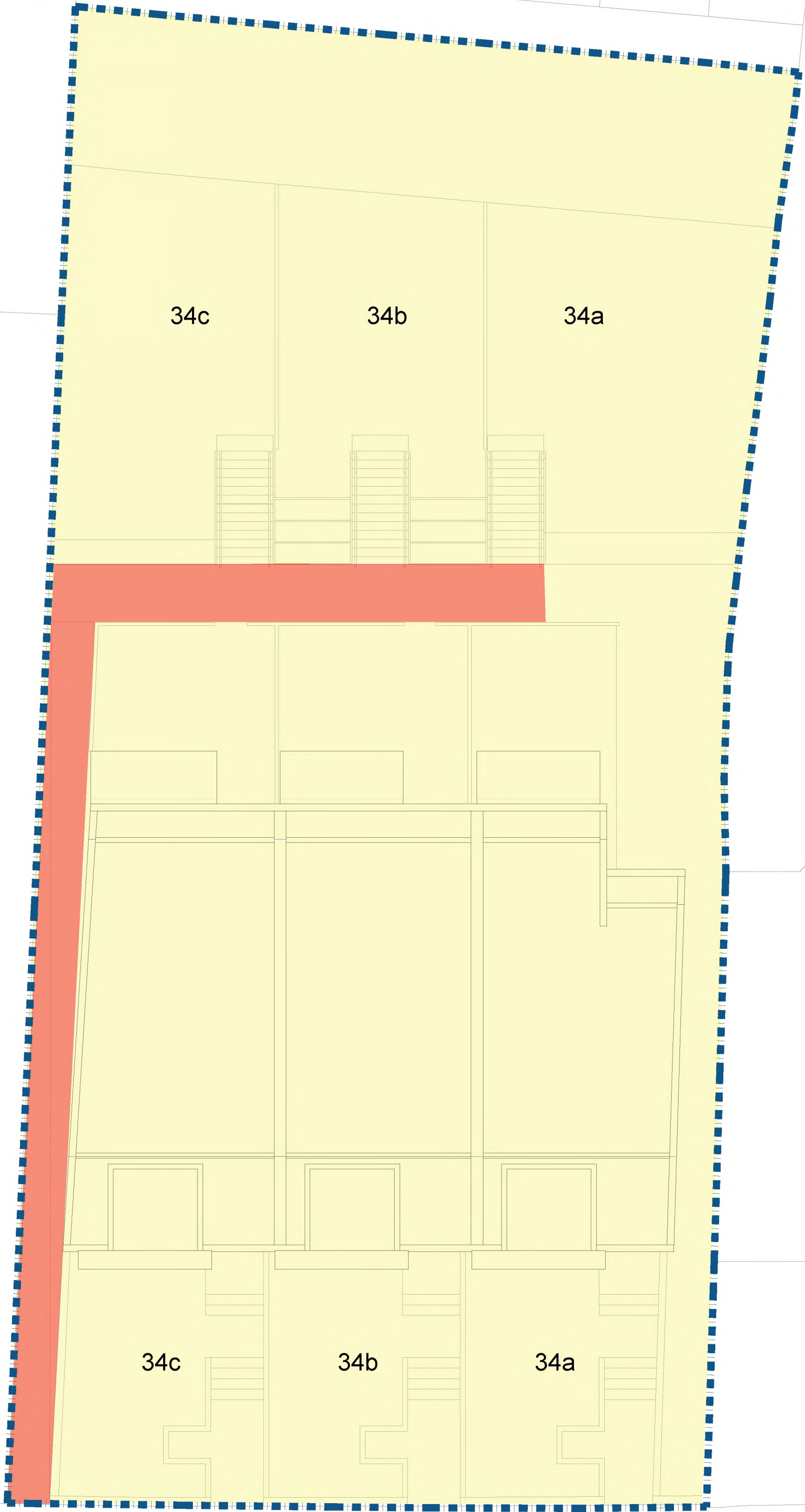




The Development registered under title MID160647 and plots 34a, 34b and 34c within have been DPA approved by:

Craig McFadden – 27 August 2018

Craig McFadden (DPA Officer)



Notes:
Do not scale dimensions from this drawing.
Dimensions marked with an asterisk * are open site dimensions to be confirmed on site.
All given dimensions are to be checked on site when setting out and any discrepancy reported immediately.
The copyright of all information contained within this drawing subsides with block 9 architects.

LEGEND:

-  Site Boundary
-  Disabled Access

E	15/08/18	Solicitor Amendments	mgd	sja
D	15/08/18	Solicitor Amendments	mgd	sja
C	07/08/18	Solicitor Amendments	mgd	sja
B	02/08/18	Solicitor Amendments	jc	sja
A	02/08/18	Solicitor Amendments	jc	sja

Rev	Date	Notes	By	CHKd
-----	------	-------	----	------

Project: 34 Seaview Terrace
Edinburgh
EH15 2HE

Client: Arc (edin) Ltd
Unit 2
Inveresk Ind
est
Musselburgh
EH12 7UL

Drawing title:
Deed of Conditions
Site Plan

Ref: w02 Sheet:

Date: July 2018 Scale: 1:100

Drawn by: jc Checked by: sa

Drawing no.: b9-1414 - 303 Revision: E

block 9
ARCHITECTS

21 Castle Street
Edinburgh
EH2 3DN

0131 629 4950

info@block9architects.com
www.block9architects.com



Notes:
Do not scale dimensions from this drawing.
Dimensions marked with an asterisk * are open site dimensions to be confirmed on site.
All given dimensions are to be checked on site when setting out and any discrepancy reported immediately.
The copyright of all information contained within this drawing subsides with block 9 architects.

LEGEND:

- Site Boundary
- Ownership

Rev	Date	Notes	By	Chkd
D	15/08/18	Solicitor Amendments	mt	sa
C	02/08/18	Solicitor Amendments	jc	sa
B	02/08/18	Solicitor Amendments	jc	sa
A	02/08/18	Solicitor Amendments	jc	sa

Project: 34 Seaview Terrace
Edinburgh
EH15 2HE

Client: Arc (edin) Ltd
Unit 2
Block 3
Inveresk Ind
est
Musselburgh
EH12 7ul

Drawing title:
34A Seaview Terrace -
Site Plan

Ref: w02 Sheet:

Date: July 2018 Scale: 1:100

Drawn by: jc Checked by: sa

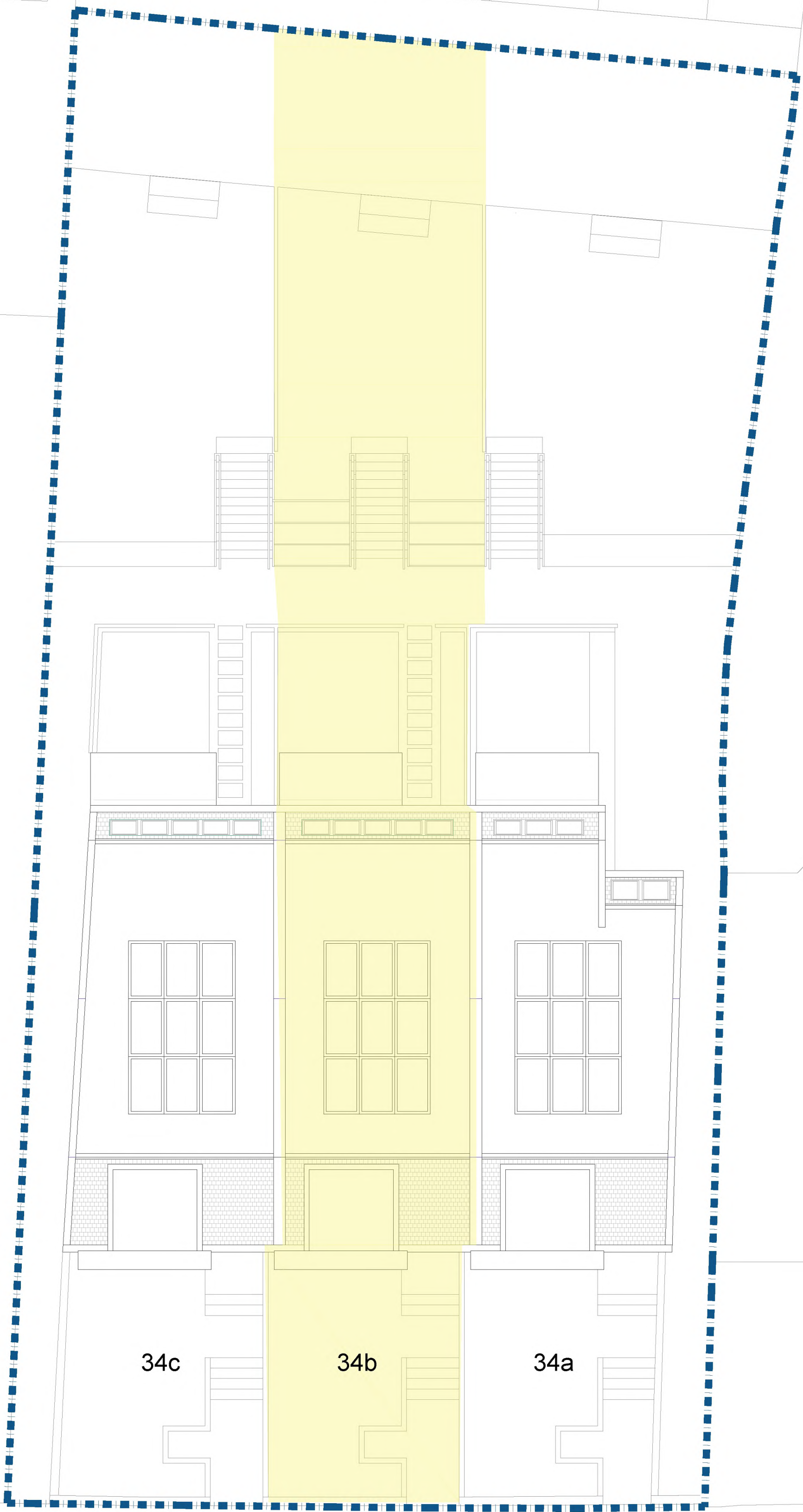
Drawing no.: b9-1414 - 300 Revision: D

block 9
ARCHITECTS

21 Castle Street
Edinburgh
EH2 3DN

0131 629 4950

info@block9architects.com
www.block9architects.com



SEAVIEW TERRACE

Notes:
Do not scale dimensions from this drawing.
Dimensions marked with an asterisk * are open site dimensions to be confirmed on site.
All given dimensions are to be checked on site when setting out and any discrepancy reported immediately.
The copyright of all information contained within this drawing subsides with block 9 architects.

LEGEND:

- Site Boundary
- Ownership

D	15/08/18	Solicitor Amendments	md	spa
C	02/08/18	Solicitor Amendments	jc	spa
B	02/08/18	Solicitor Amendments	jc	spa
A	02/08/18	Solicitor Amendments	jc	spa
Rev	Date	Notes	By	CHKd

Project: 34 Seaview Terrace
Edinburgh
EH15 2HE

Client: Arc (edin) Ltd
Unit 2
Block 3
Inveresk Ind
est
Musselburgh
EH12 7UL

Drawing title:
34B Seaview Terrace -
Site Plan

Ref: w02 Sheet:

Date: July 2018 Scale: 1:100

Drawn by: jc Checked by: sa

Drawing no.: b9-1414 - 301 Revision: D



21 Castle Street
Edinburgh
EH2 3DN

0131 629 4950

info@block9architects.com
www.block9architects.com



Notes:
Do not scale dimensions from this drawing.
Dimensions marked with an asterisk "*" are open site dimensions to be confirmed on site.
All given dimensions are to be checked on site when setting out and any discrepancy reported immediately.
The copyright of all information contained within this drawing subsides with block 9 architects.

LEGEND:

- Site Boundary
- Ownership



D	15/08/18	Solicitor Amendments	mt	sa
C	02/08/18	Solicitor Amendments	jc	sa
B	02/08/18	Solicitor Amendments	jc	sa
A	02/08/18	Solicitor Amendments	jc	sa
Rev	Date	Notes	By	CHKd

Project: 34 Seaview Terrace
Edinburgh
EH15 2HE

Client: Arc (edin) Ltd
Unit 2
Block 3
Inveresk Ind
est
Musselburgh
EH12 7ul

Drawing title:
34C Seaview Terrace -
Site Plan

Ref: w02 Sheet:

Date: July 2018 Scale: 1:100

Drawn by: jc Checked by: sa

Drawing no.: b9-1414 - 302 Revision: D

block 9
ARCHITECTS

21 Castle Street
Edinburgh
EH2 3DN

0131 629 4950

info@block9architects.com
www.block9architects.com