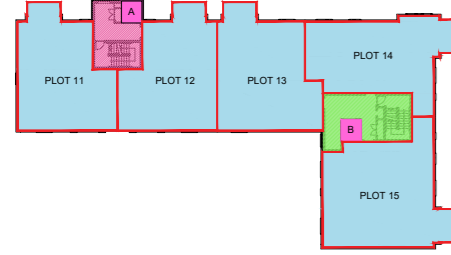
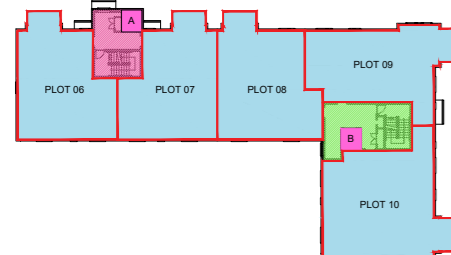


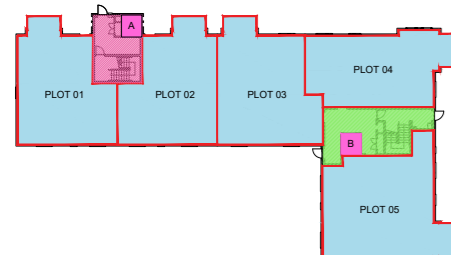
PLOTS 1-15 THIRD FLOOR



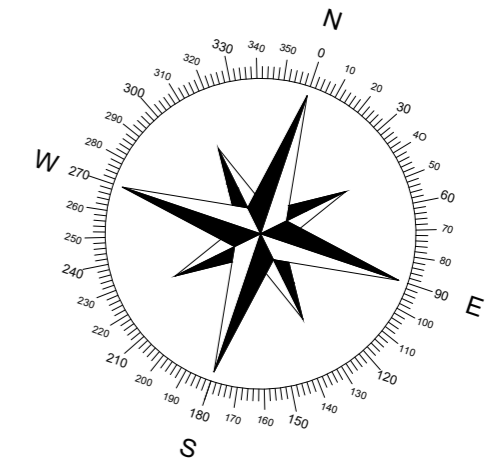
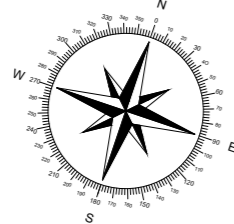
PLOTS 1-15 SECOND FLOOR



PLOTS 1-15 FIRST FLOOR



PLOTS 1-15 GROUND FLOOR



- Adjoining Previous Development
- Block of Plots 1-15
- SUDs and Swale to be maintained by Factor until Adoption by Scottish Water
- Open ground (Areas to be maintained by the Factor)
- Footpath to Plots 1-15
- Shared Access for Plots 1-15
- Parking to Plots 1-15
- Communal Bin Stores to Plots 1-15
- Shared Access for Plots 81-82
- Shared Access for Plots 83-84
- Shared Access for Plots 77-78
- Adjoining Future Development
- Retaining Wall - Common
- Retaining Wall - Mutual
- Retaining Wall - Exclusive
- Wall - Common
- Low Wall - Exclusive
- Tall Wall - Exclusive
- Plot Boundary

The Development registered under Title REN147840 and plots 1 to 15, 11 to 15 upper level, 16 to 25 and 62 to 84 within have been DPA approved by:

*D. McIntyre - 21st January 2022*

Danielle McIntyre (DPA Officer)

SCALE



Project:  
RESIDENTIAL DEVELOPMENT  
MALLETSHEUGH  
NEWTON MEARS  
Drawing Title:  
DPA DEVELOPMENT PLAN APPROVAL

Drng. No:  
0136/DPA/01  
Scale:  
1:1000@A2  
Drawn:  
PS

Rev:  
-  
Date:  
Oct 2021  
Checked:  
IP



1 Atlantic Quay Robertson Street  
Glasgow G2 8JB  
Tel: 0141 332 0001 Fax: 0141 248 4921  
Web: www.macmic.co.uk E-mail: homes@macmic.co.uk