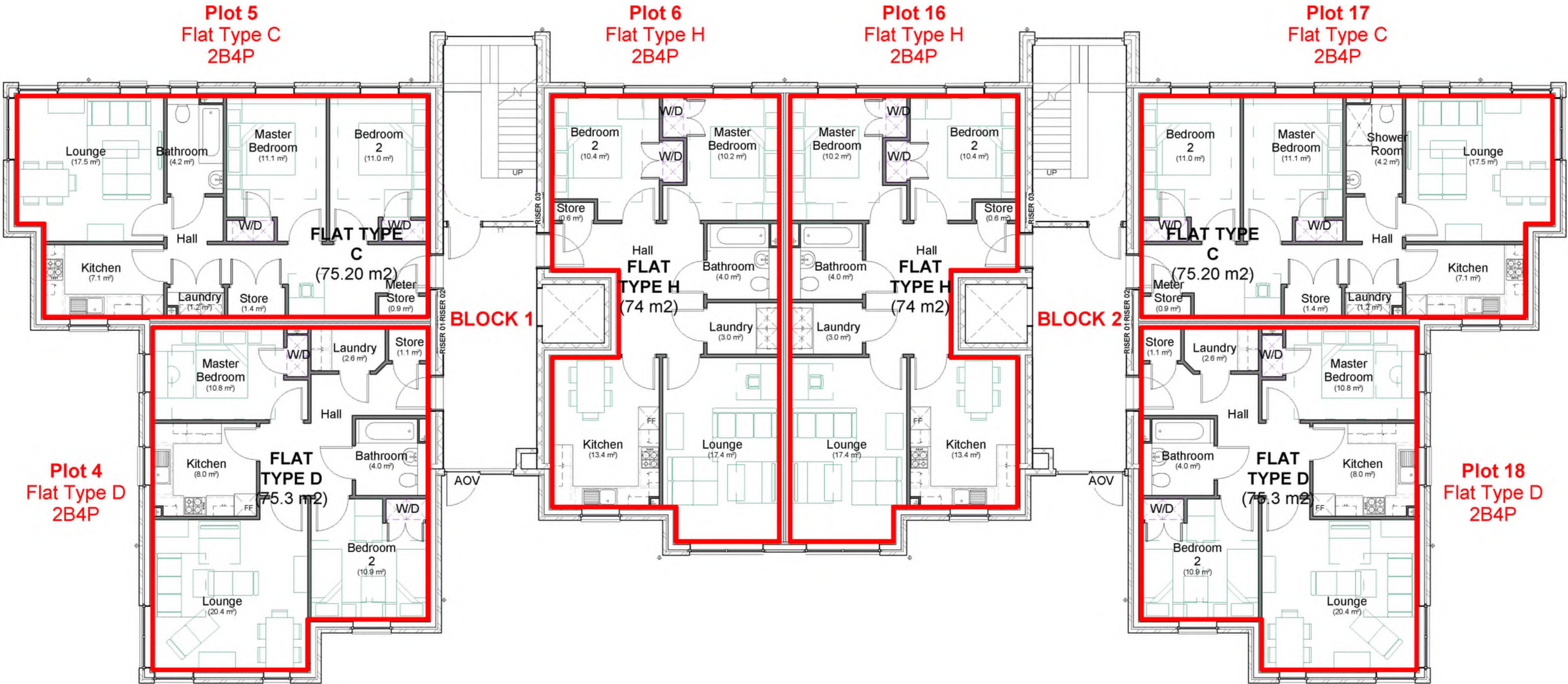
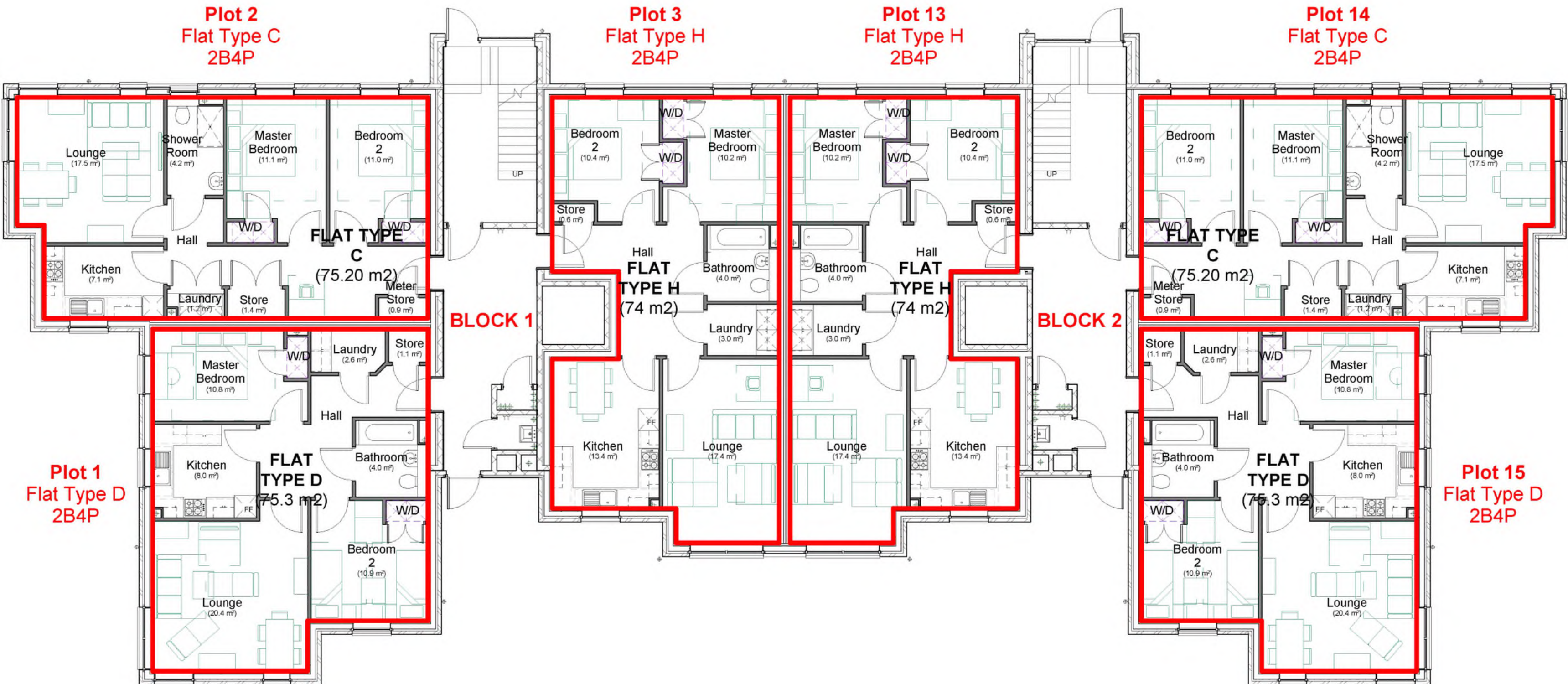


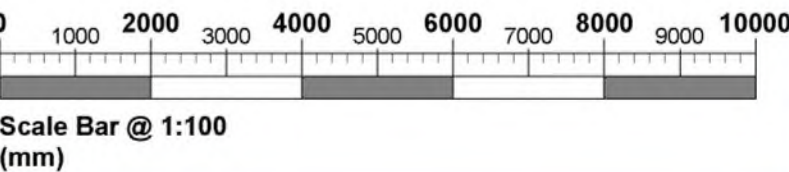
The Development registered under title DMB90599 and plots 1 to 24 within have been DPA approved by:  
Craig McFadden - 27 February 2018  
Craig McFadden ( DPA Officer)




2 First Floor Plan  
1 : 100



1 Ground Floor Plan  
1 : 100





INVESTOR IN PEOPLE

HEALTH AND SAFETY RISK ASSESSMENT CONSEQUENCE TABLE	Consequences				
	Insignificant	Minor	Moderate	Major	Catastrophic
1	Almost Certain 5	Likely 4	Possible 3	Unlikely 2	Rare 1

Rev	Description	Auth	Date
REVISION			

STAMP  
**AS BUILT**

PROJECT STATUS  
Handover

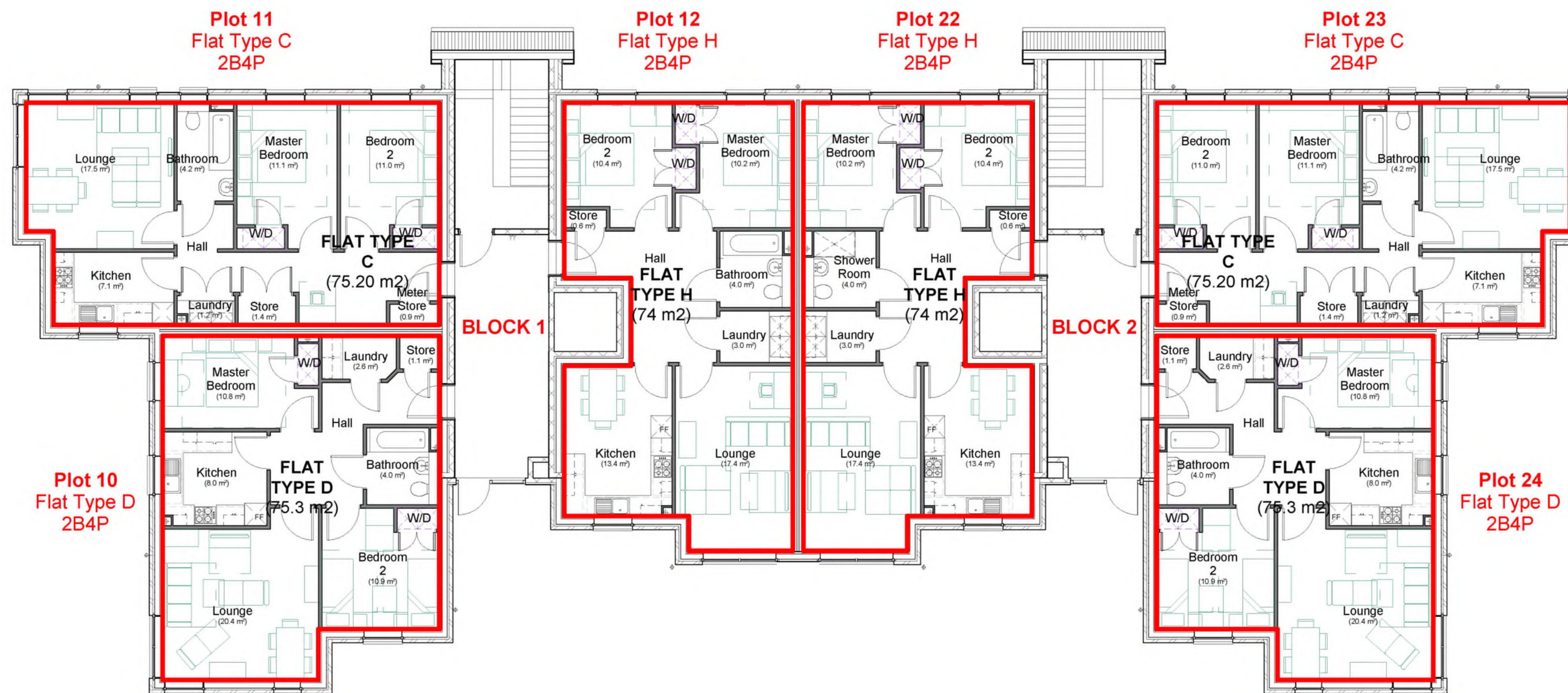
DRAWING TITLE  
Deed of Condition Block Layouts  
Sheet 1 of 2

PROJECT  
HUME ROAD - PHASE I at  
CUMBERNAULD for  
SANCTUARY HOUSING ASSOCIATION

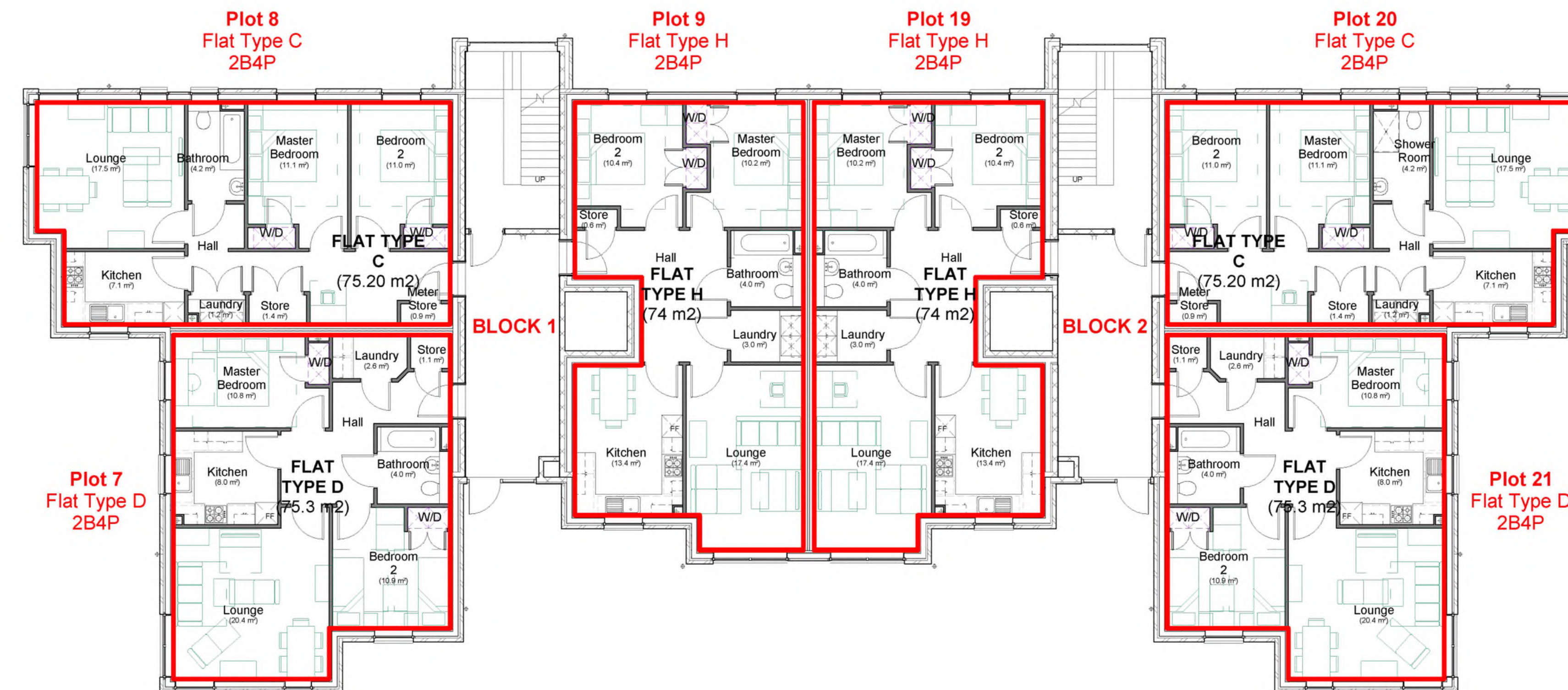
DATE CREATED 01/12/17	DESIGNER GDC	SCALE @ A1 1 : 100
DRAWING NUMBER 5402(6)PL500		REVISION ?

**oliver + robb architects**  
Pitreavie Drive, Dunfermline  
KY11 8UH  
T: 01383 621621  
W: www.oliverandrobb.co.uk  
Members: Brian A Robb David M Tibbs

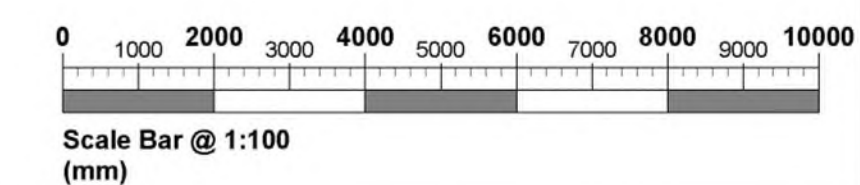





2 Third Floor Plan  
1 : 100



1 Second Floor Plan  
1 : 100





INVESTOR IN PEOPLE

HEALTH AND SAFETY RISK ASSESSMENT CONSEQUENCE TABLE	Consequences				
	Insignificant	Minor	Moderate	Major	Catastrophic
Almost Certain 5	5	10	15	20	25
Likely 4	4	8	12	16	20
Possible 3	3	6	9	12	15
Unlikely 2	2	4	6	8	10
Rare 1	1	2	3	4	5

A Plot 10 note added

Rev Description

Auth Date

REVISION

STAMP

**AS BUILT**

PROJECT STATUS

Handover

DRAWING TITLE

Deed of Condition Block Layouts  
Sheet 2 of 2

PROJECT

HUME ROAD - PHASE I at  
CUMBERNAULD for  
SANCTUARY HOUSING ASSOCIATION

DATE CREATED	DESIGNER	SCALE @ A1
01/12/17	GDC	1 : 100

DRAWING NUMBER	REVISION
5402(6)PL501	A

**oliver + robb architects**

Pitreavie Drive, Dunfermline  
KY11 8UH  
T: 01383 621621  
W : www.oliverandrobb.co.uk  
Members: Brian A Robb David M Tibbs



