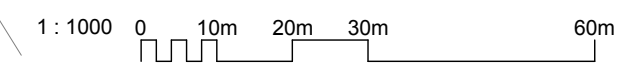
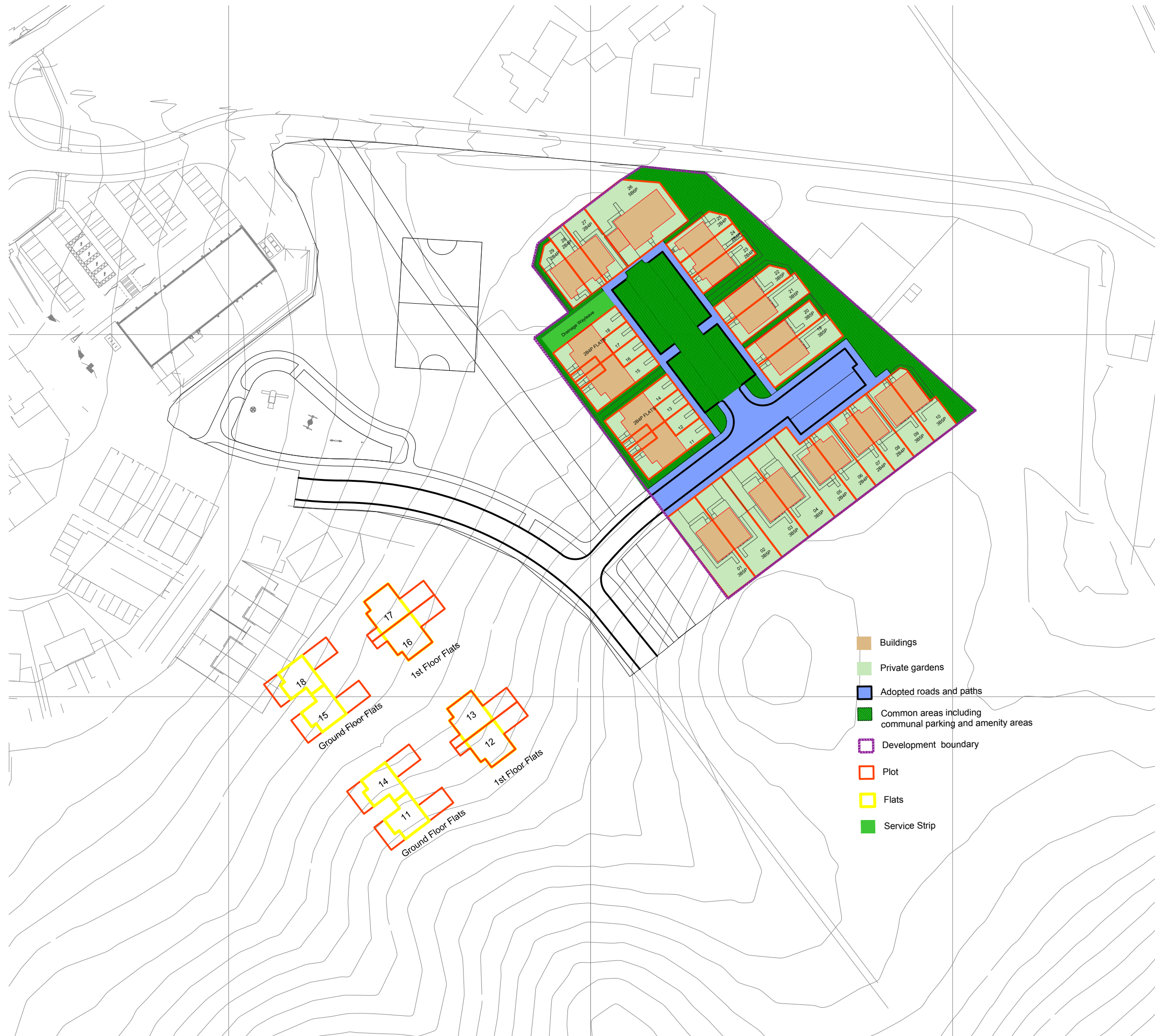


The Development registered under Title ROS20054 and Plots 1 to 29 (inclusive) within have been DPA approved by:

1 MacLaren - 5th September 2018

Iain MacLaren (DPA Officer)



- Buildings
- Private gardens
- Adopted roads and paths
- Common areas including communal parking and amenity areas
- Development boundary
- Plot
- Flats
- Service Strip

B	26.07.18	Hatch revised to match site boundary	AF
A	25.06.18	Site boundary revised	AF
REV	DATE	DESCRIPTION	DRN

Bracewell Stirling

● 38 WALKER TERRACE, TILlicOUNTRY, FK13 6EF TEL: 01259 752365 ●

○ 5 NESS BANK, INVERNESS, IV2 4SF TEL: 01463 233760 ○

29 AFFORDABLE UNITS PHASE 5A, BRAES OF CONON TULLOCH HOMES EXPRESS			
TITLE DEVELOPMENT PLAN			
SCALE	DATE	BY	---
1000	08/06/2018		
	PURPOSE	PAPER	A3
DWG NO.-REV		4181-02-010 B	