

The Development registered under Title MID142230 and 2 plots within Block A and 3 plots within Block B have been DPA approved by:

*D. McIntyre - 17th March 2021*

Danielle McIntyre (DPA Officer)



Hackland and Dore Architects  
16 Annandale Street  
Edinburgh EH7 4AN  
t 0131 538 7707  
e admin@hackland-dore.com  
w www.hackland-dore.com

DO NOT SCALE. IF IN DOUBT, ASK

Electronic and printed copies of drawings are liable to distortion and inaccuracies. All dimensions in millimetres unless otherwise stated. This drawing to be read in conjunction with all relevant architectural, civil, structural and services engineer's drawings and specifications.

© This drawing is copyright and the property of Hackland + Dore Architects. It must not be reproduced or disclosed to a third party without written consent.



REV A AS 09.04.18 EXTERNAL STAIR FLIGHT AND TOP LANDING TO SOUTH-EAST ELEVATION REMOVED

|  |                        |                    |                   |                |                |
|--|------------------------|--------------------|-------------------|----------------|----------------|
| Residential Development<br>Figgate Street, Portobello, Edinburgh | GA - GROUND FLOOR PLAN | Date<br>28-04-2017 | Scale<br>1:100@A3 | Drawn By<br>AS | Chckd By<br>MM |
| Figgate Street Developments Ltd                                  | PLANNING               | HD934 (PL)030      |                   | A              |                |

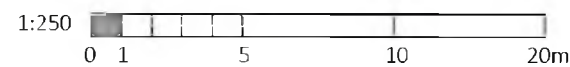


Hackland and Dore Architects  
 16 Annandale Street  
 Edinburgh EH7 4AN  
 t 0131 538 7707  
 e admin@hackland-dore.com  
 w www.hackland-dore.com

DO NOT SCALE. IF IN DOUBT, ASK

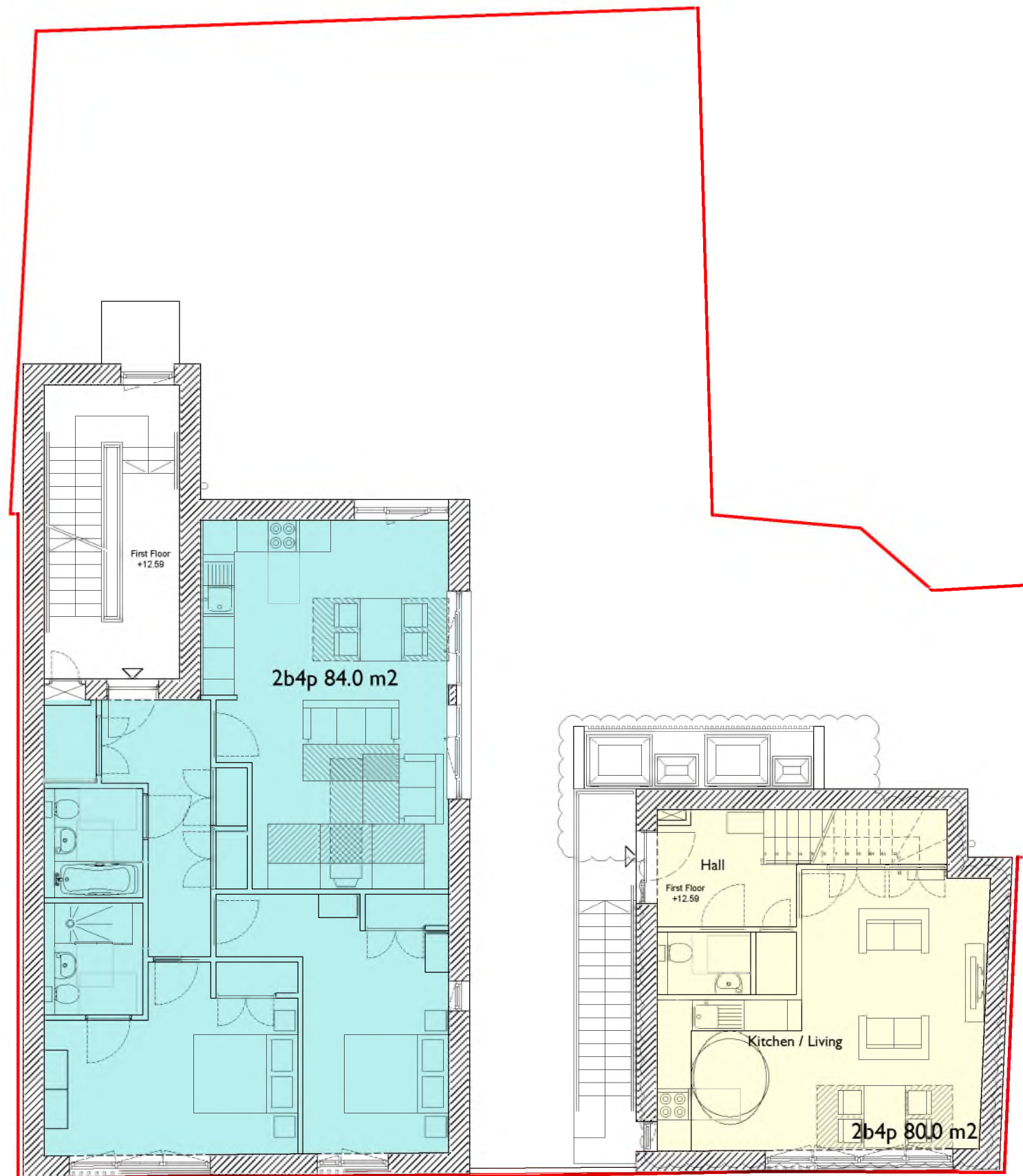
Electronic and printed copies of drawings are liable to distortion and inaccuracies. All dimensions in millimetres unless otherwise stated. This drawing to be read in conjunction with all relevant architectural, civil, structural and services engineer's drawings and specifications.

© This drawing is copyright and the property of Hackland + Dore Architects. It must not be reproduced or disclosed to a third party without written consent.



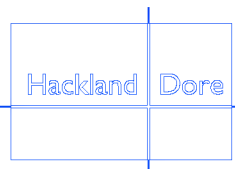
|        |    |                               |          |
|--------|----|-------------------------------|----------|
| Rev. B | AS | Drawing scale change          | 26.11.20 |
| Rev. A | AS | A and B area outlines amended | 25.11.20 |

|  |                   |                           |          |          |         |
|--|-------------------|---------------------------|----------|----------|---------|
| Residential development<br>Figgate Street, Portobello, Edinburgh | GROUND FLOOR PLAN | Date                      | Scale    | Drawn By | Chkd By |
| Carlsson Properties Ltd.   | DEEDS             | 25-11-2020                | 1:250@A3 | AS       | MM      |
|  |                   | <b>HD1019(Deeds)030 B</b> |          |          |         |



FIGGATE STREET

REV A AS 09.04.18 EXTERNAL STAIR FLIGHT AND TOP LANDING TO SOUTH-EAST ELEVATION REMOVED  
INTERNAL LAYOUT AMENDED



Hackland and Dore Architects  
16 Annandale Street  
Edinburgh EH7 4AN  
t 0131 538 7707  
e admin@hackland-dore.com  
w www.hackland-dore.com

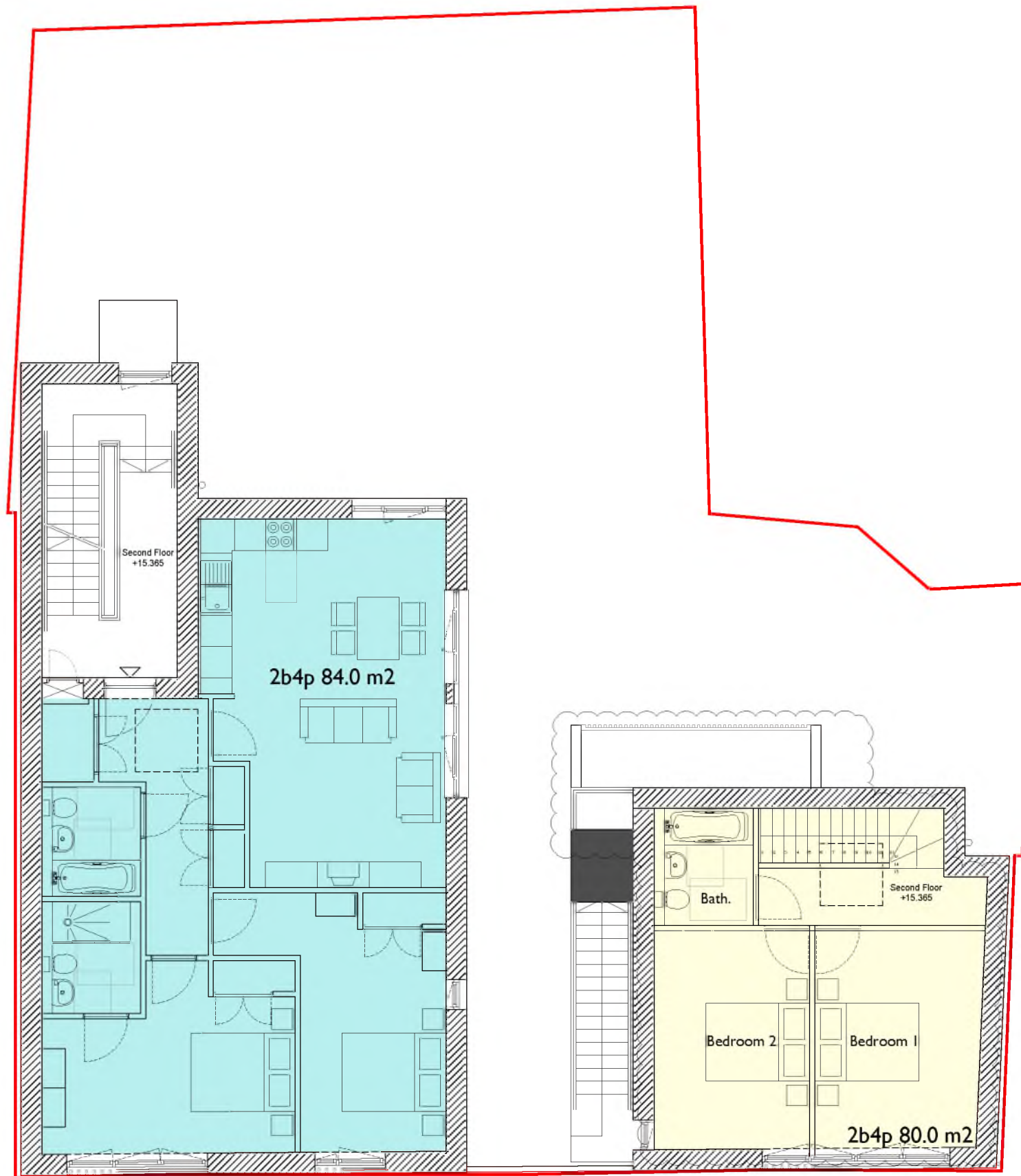
DO NOT SCALE. IF IN DOUBT, ASK

Electronic and printed copies of drawings are liable to distortion and inaccuracies. All dimensions in millimetres unless otherwise stated. This drawing to be read in conjunction with all relevant architectural, civil, structural and services engineer's drawings and specifications.

© This drawing is copyright and the property of Hackland + Dore Architects. It must not be reproduced or disclosed to a third party without written consent.

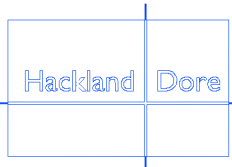


|  |                       |                    |                   |                |                |
|--|-----------------------|--------------------|-------------------|----------------|----------------|
| Residential Development<br>Figgate Street, Portobello, Edinburgh | GA - FIRST FLOOR PLAN | Date<br>28-04-2017 | Scale<br>1:100@A3 | Drawn By<br>AS | Chckd By<br>MM |
| Figgate Street Developments Ltd                                  | PLANNING              | HD934 (PL)031      |                   | A              |                |



FIGGATE STREET

REV A AS 09.04.18 EXTERNAL STAIR FLIGHT AND TOP LANDING, 2nd FLOOR ENTRANCE DOOR AND ASSOCIATED CANOPY TO SOUTH-EAST ELEVATION REMOVED  
INTERNAL LAYOUT AMENDED  
ROOFLIGHT ABOVE DUPLEX RELOCATED



Hackland and Dore Architects  
16 Annandale Street  
Edinburgh EH7 4AN  
t 0131 538 7707  
e admin@hackland-dore.com  
w www.hackland-dore.com

DO NOT SCALE. IF IN DOUBT, ASK

Electronic and printed copies of drawings are liable to distortion and inaccuracies. All dimensions in millimetres unless otherwise stated. This drawing to be read in conjunction with all relevant architectural, civil, structural and services engineer's drawings and specifications.

© This drawing is copyright and the property of Hackland + Dore Architects. It must not be reproduced or disclosed to a third party without written consent.



|  |                        |                    |                   |                |               |
|--|------------------------|--------------------|-------------------|----------------|---------------|
| Residential Development<br>Figgate Street, Portobello, Edinburgh | GA - SECOND FLOOR PLAN | Date<br>28-04-2017 | Scale<br>1:100@A3 | Drawn By<br>AS | Chkd By<br>MM |
| Figgate Street Developments Ltd                                  | PLANNING               | HD934 (PL)032      |                   | A              |               |