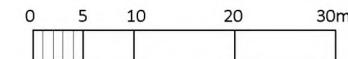
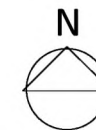
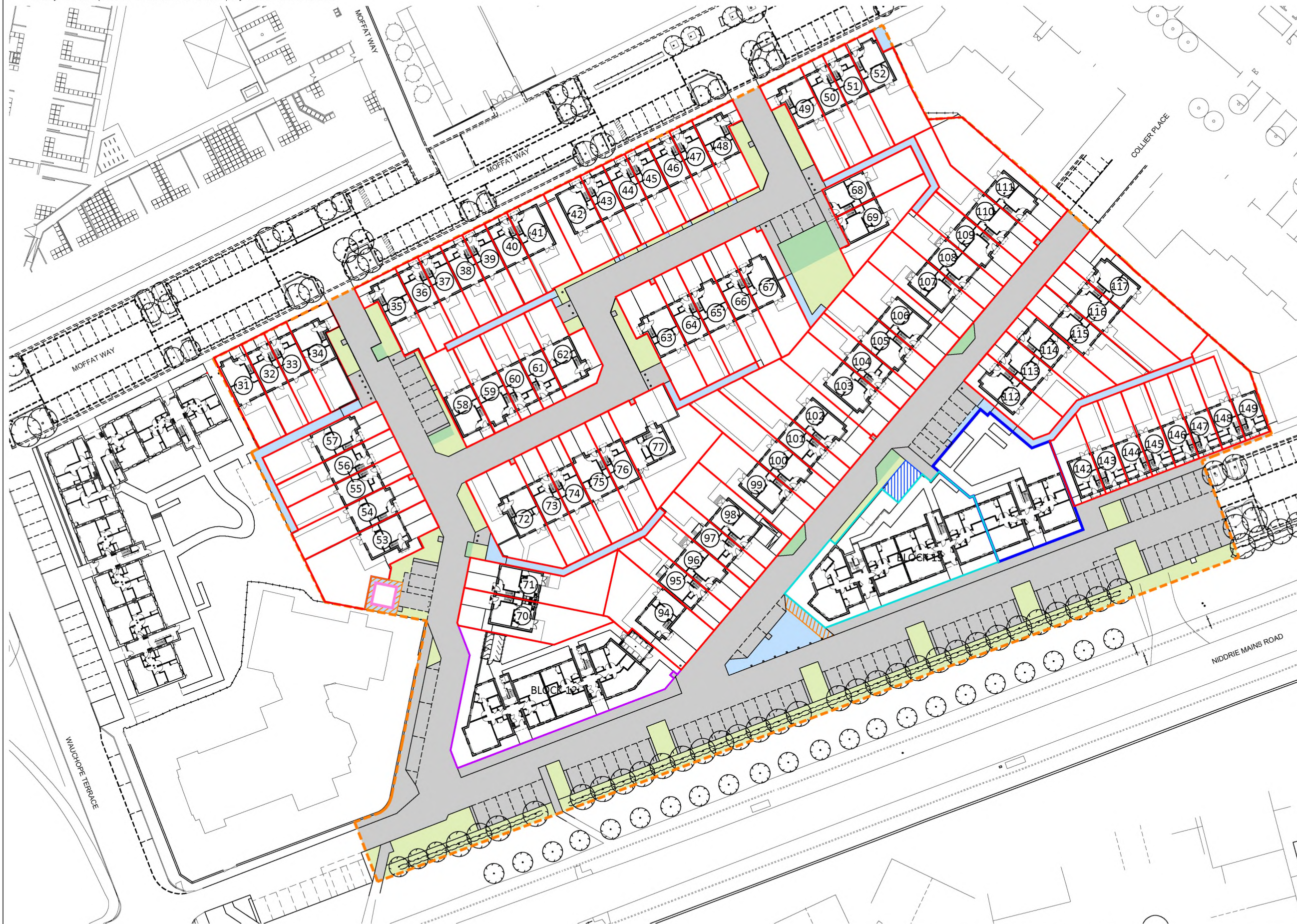


© This drawing is Copyright and the property of Cruden Homes (East) Ltd
It may not be reproduced or disclosed to a third party without written consent.



- Development boundary
- Plot boundary
- Housing Association boundary
- Block 12 common boundary
- Block 19 common boundary
- Scottish Power substation
- Adoptable access roads
- Adoptable service strip
- Private access roads
- Open ground
- Wayleave
- Block 19 shared store

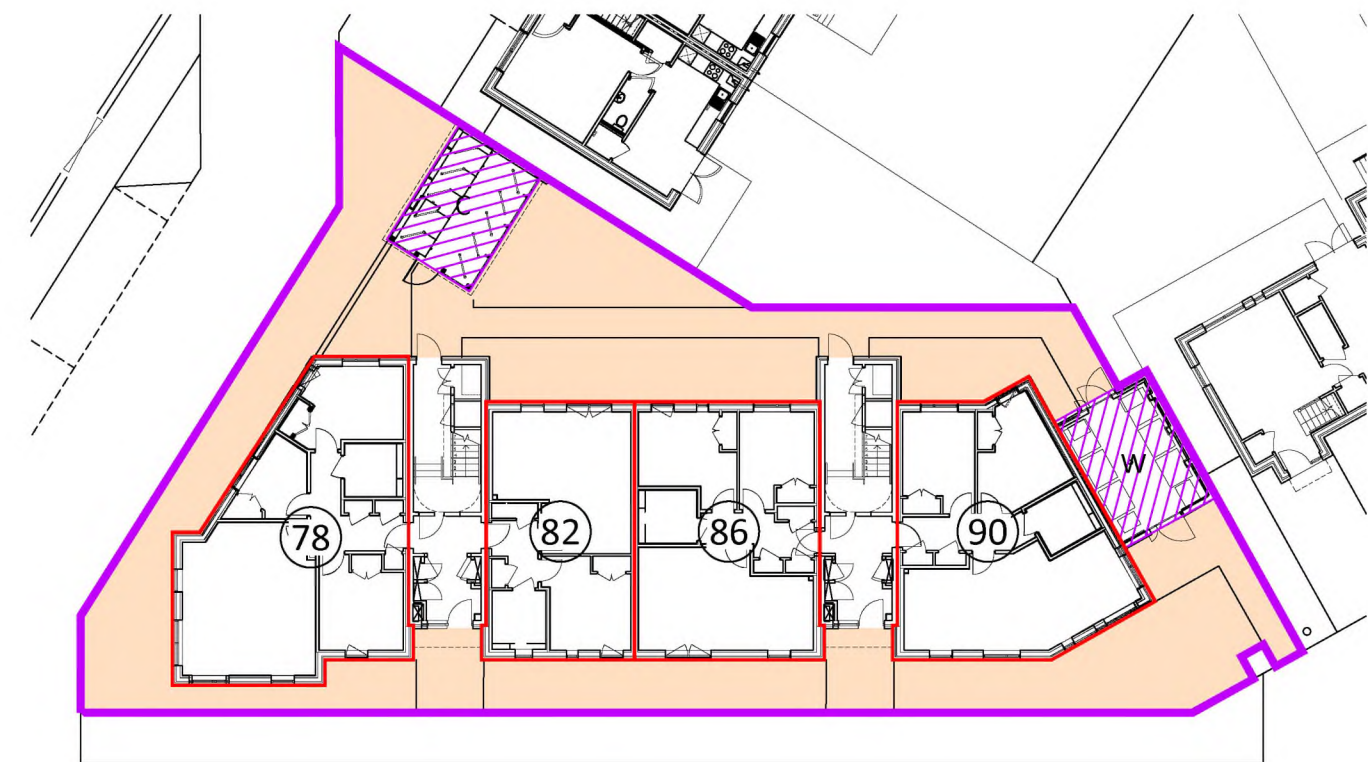
The Development registered under title MID180508 and plots 31 to 133 and 142 to 149 within have been DPA approved by:
Craig McFadden - 13 August 2018
Craig McFadden (DPA Officer)

A KH East boundary amended at 08/08/18
plot 111 as ROS title.
Rev By Details Date

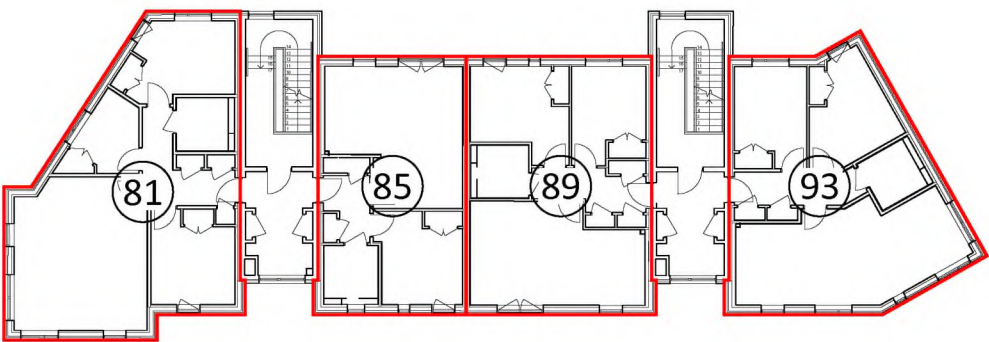
| | | | | | |
|---------|-------------------------------------------------------|-------------|-------------|------|----------|
| Project | Wauchope phases 4, 5 & 6 | Drawing No. | 1626(LG)001 | Rev | A |
| Drawing | Development Plan Approval and Deed of Conditions Plan | Status | INFORMATION | | |
| Scale | 1:750 @ A3 | Drawn | KH | Date | 03/07/18 |



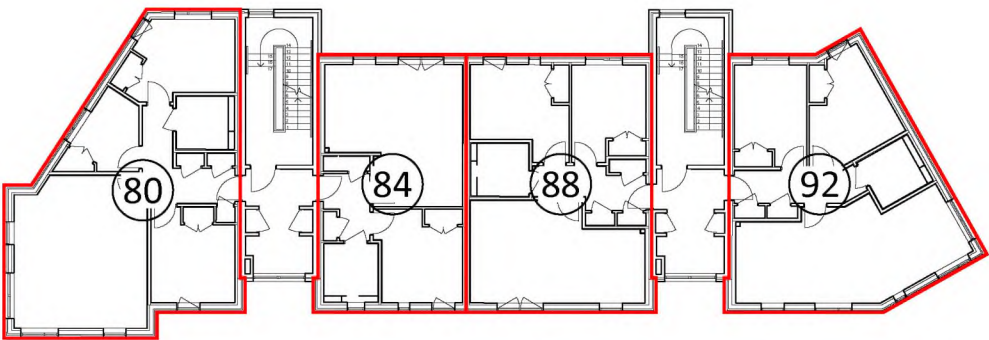
Site Plan 1:2000 @ A3



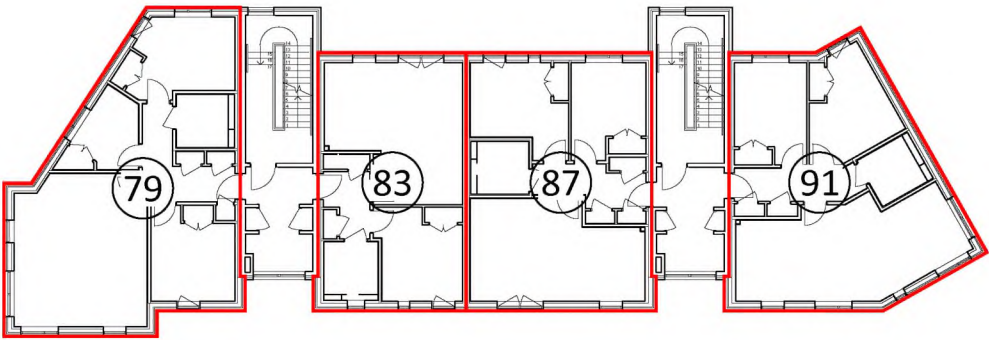
Ground Floor Plan



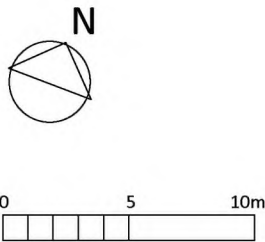
Third Floor Plan



Second Floor Plan



First Floor Plan

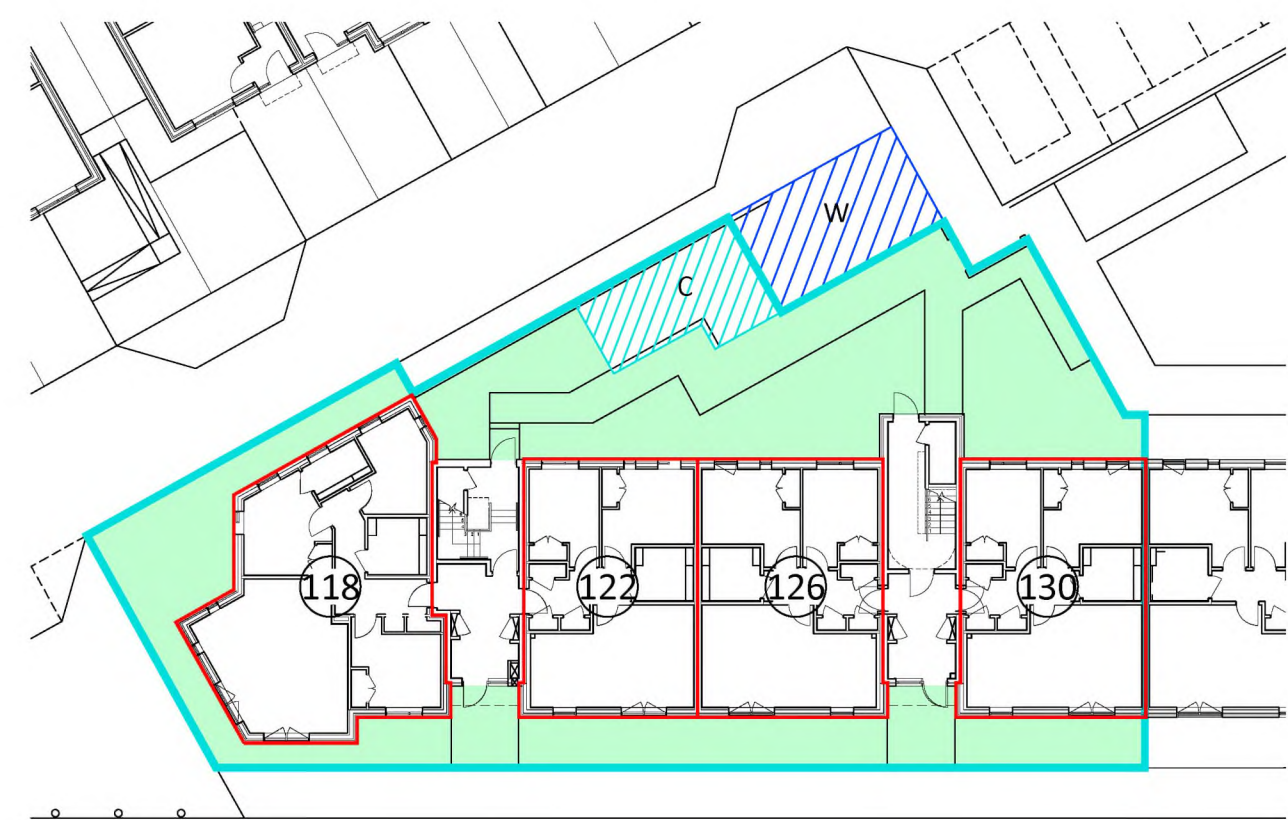


- Block 12 common boundary
- Plot boundary
- Block 12 common ground
- Block 12 store

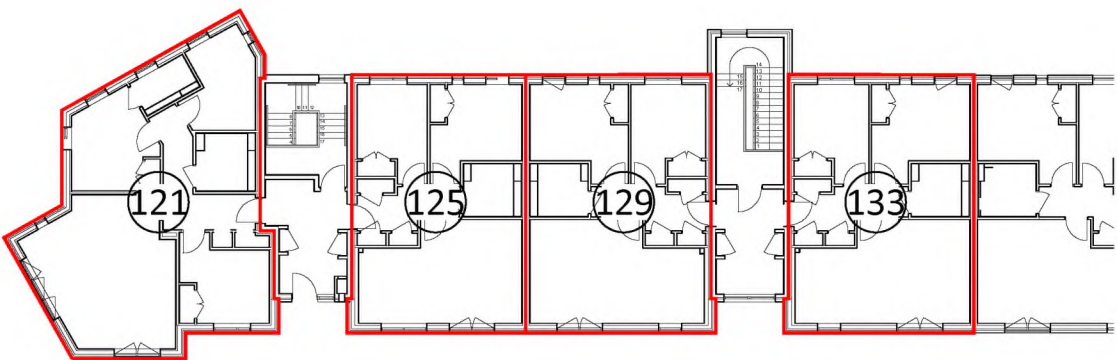
| | | | | | |
|---------|--------------------------------------------------------|-------------|-------------|------|----------|
| Project | Wauchope phases 4, 5 & 6 | Drawing No. | 1626(LG)002 | Rev | — |
| Drawing | Development Plan Approval Flatted Blocks – Block 12 | Status | INFORMATION | | |
| Scale | 1:300 @ A3 | Drawn | KH | Date | 03/07/18 |



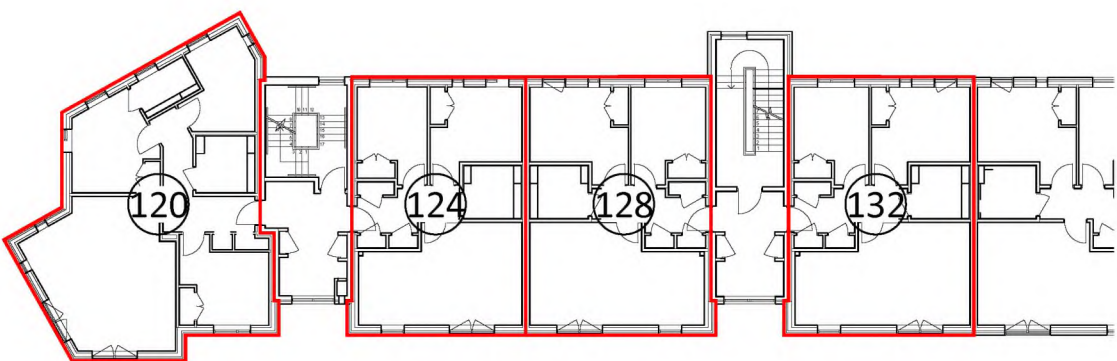
Site Plan 1:2000 @ A3



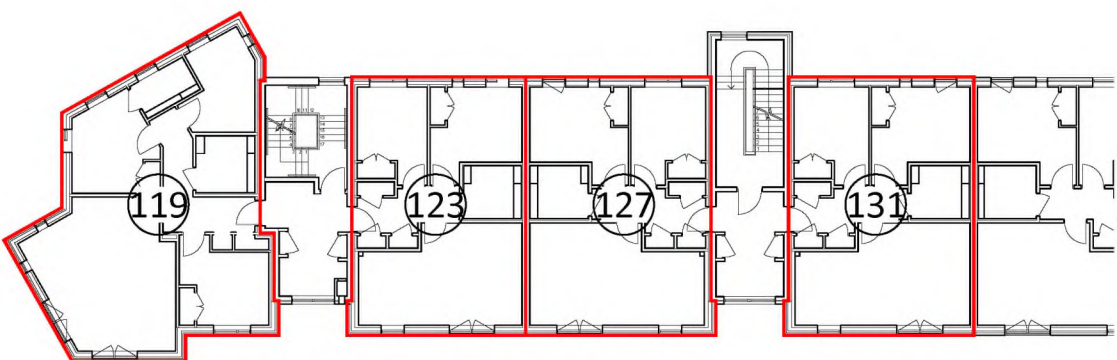
Ground Floor Plan



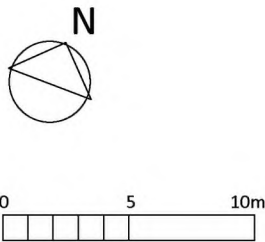
Third Floor Plan



Second Floor Plan



First Floor Plan



- Block 19 common boundary
- Plot boundary
- Block 19 common ground
- Block 19 store
- Block 19 shared store (with Housing Association flats)

| | | | | | |
|---------|--------------------------------------------------------|-------------|-------------|------|----------|
| Project | Wauchope phases 4, 5 & 6 | Drawing No. | 1626(LG)003 | Rev | — |
| Drawing | Development Plan Approval Flatted Blocks – Block 19 | Status | INFORMATION | | |
| Scale | 1:300 @ A3 | Drawn | KH | Date | 03/07/18 |