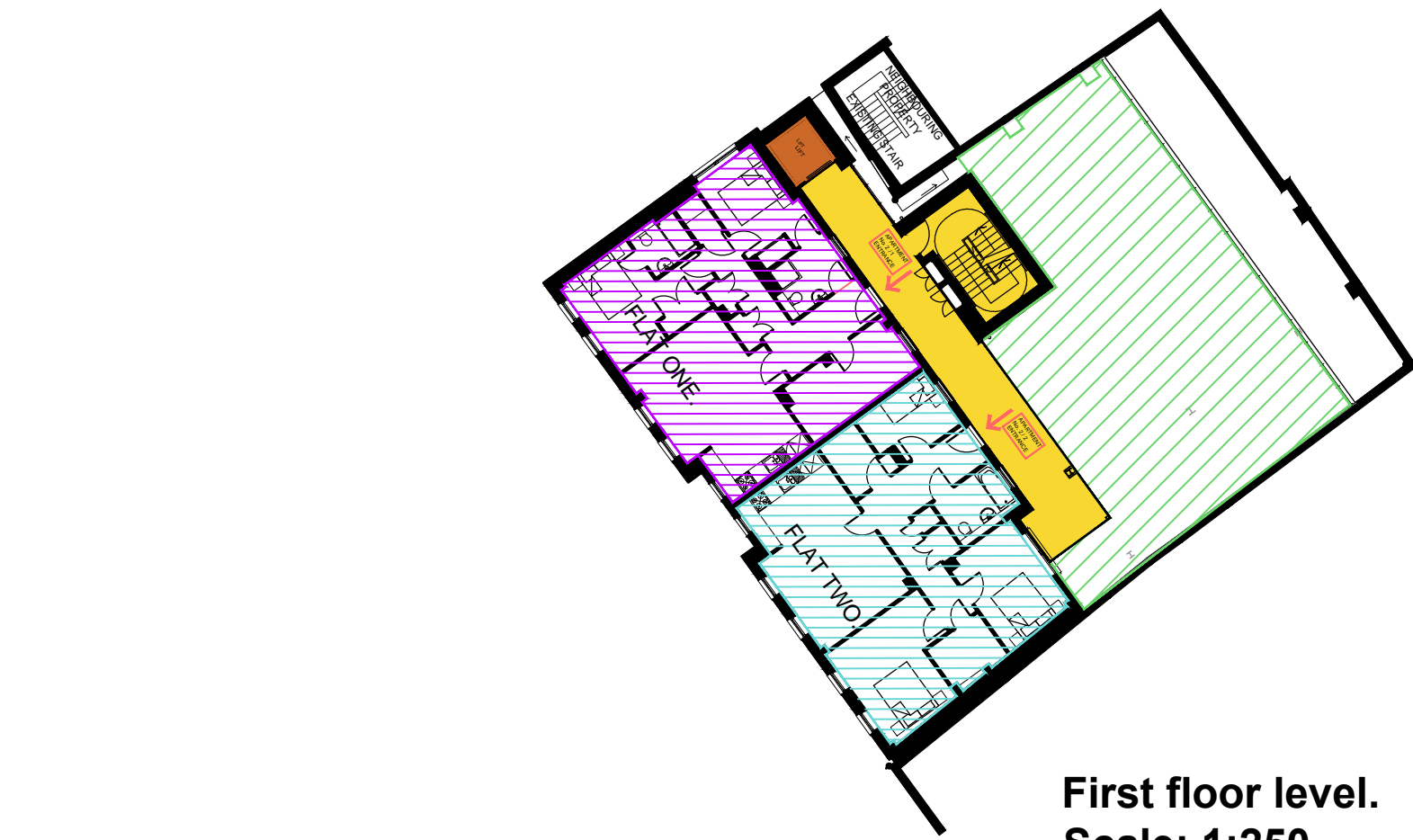


Ground floor level.
Scale: 1:250

The Development registered under title MID32151 and plots 1 to 27 within the unique DPA identifiers MID32151, MID32151-1ST FLR and MID32151- 2ND FLR, MID32151-3RD FLR, MID32151-4TH FLR, MID32151-5TH FLR, MID32151-6TH FLR, MID32151-7TH FLR, MID32151-8TH FLR have been DPA approved by ;
Craig McFadden – 7 March 2017
Craig McFadden (DPA Officer)



First floor level.
Scale: 1:250



Second floor level.
Scale: 1:250



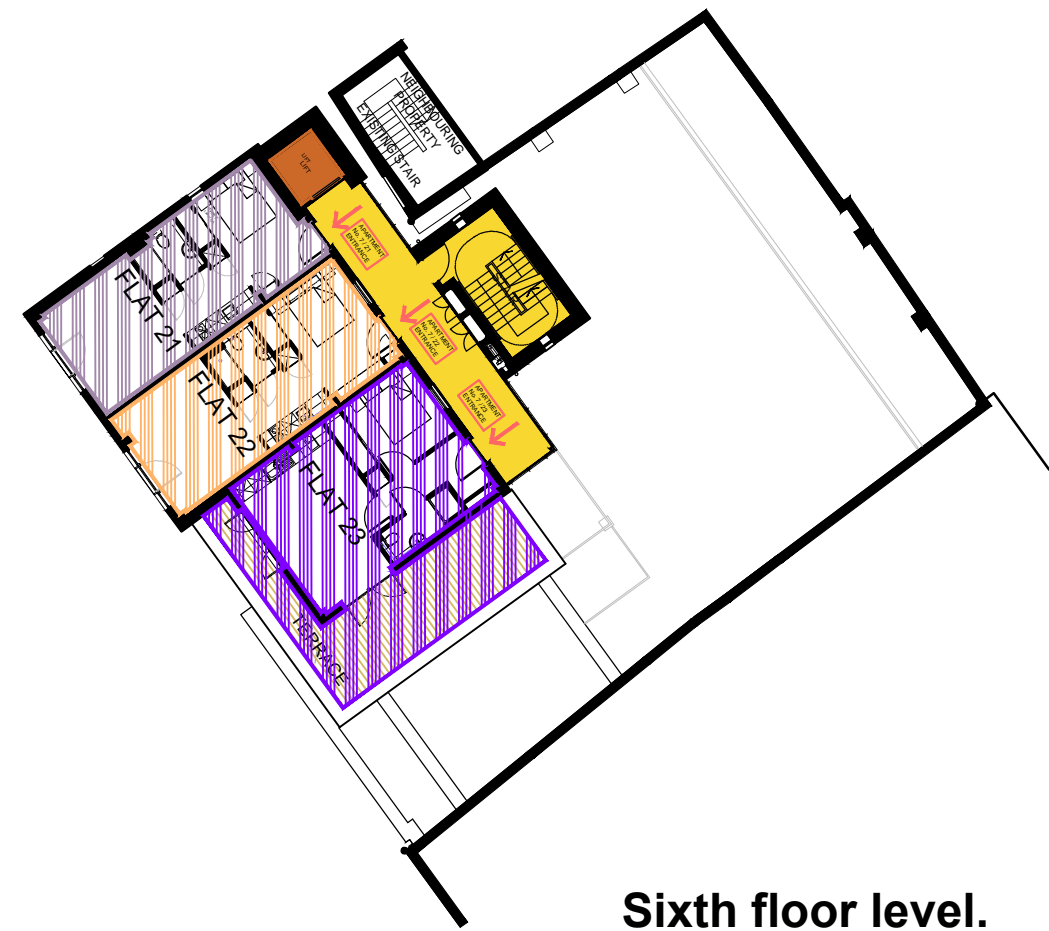
Third floor level.
Scale: 1:250



Fourth floor level.
Scale: 1:250



Fifth floor level.
Scale: 1:250



Sixth floor level.
Scale: 1:250



Seventh floor level.
Scale: 1:250



Eighth floor level.
Scale: 1:250

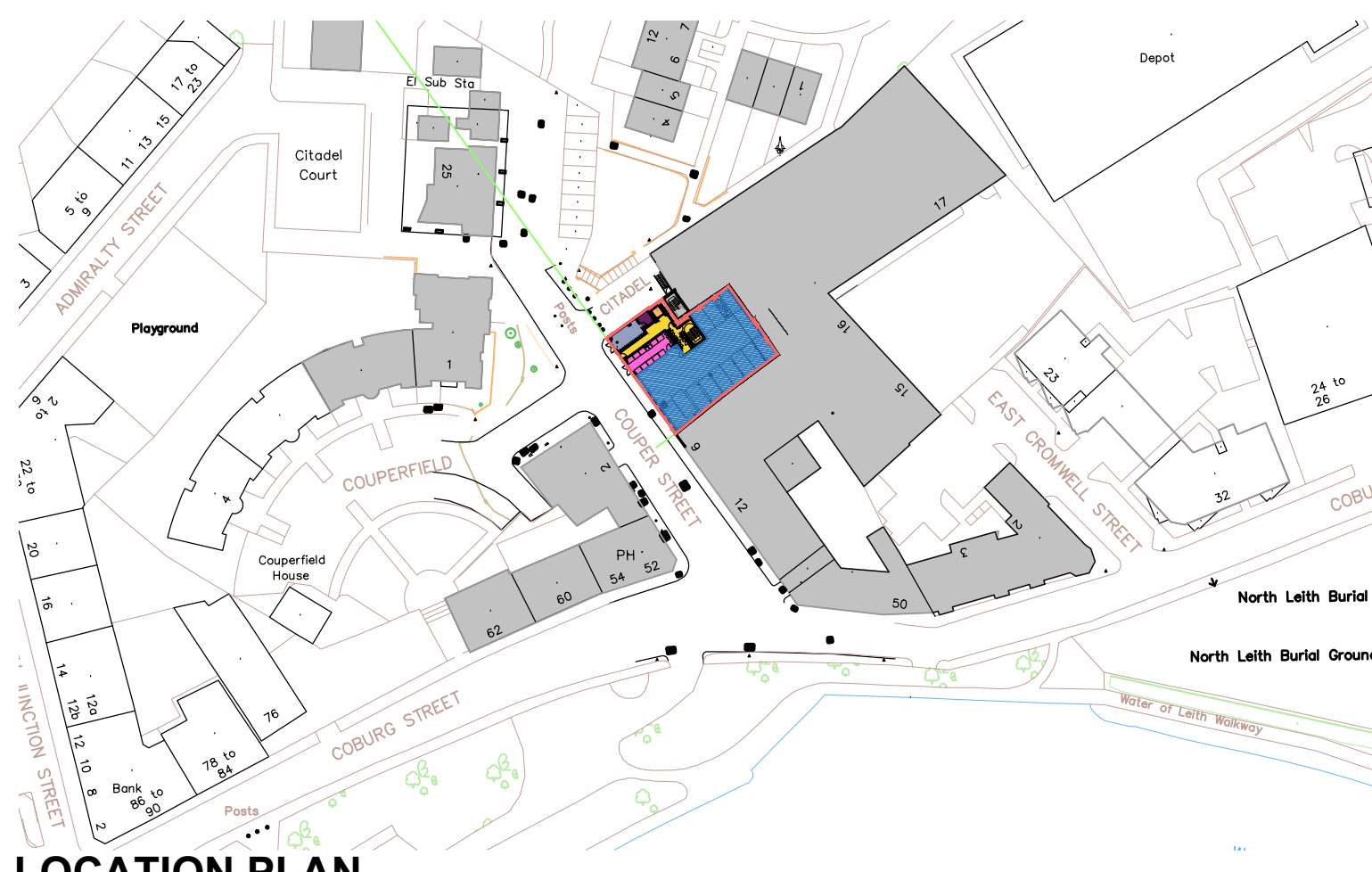
HATCH INDICATES PLOT POSITION AND ALLOCATED PARKING SPACE.

- FLAT 1, FIRST FLOOR.
- FLAT 2, FIRST FLOOR.
- FLAT 3, SECOND FLOOR.
- FLAT 4, SECOND FLOOR.
- FLAT 5, SECOND FLOOR.
- FLAT 6, SECOND FLOOR.
- FLAT 7, SECOND FLOOR.

- FLAT 8, THIRD FLOOR.
- FLAT 9, THIRD FLOOR.
- FLAT 10, THIRD FLOOR.
- FLAT 11, THIRD FLOOR.
- FLAT 12, THIRD FLOOR.
- FLAT 13, FOURTH FLOOR.
- FLAT 14, FOURTH FLOOR.
- FLAT 15, FOURTH FLOOR.
- FLAT 16, FOURTH FLOOR.

- FLAT 17, FIFTH FLOOR.
- FLAT 18, FIFTH FLOOR.
- FLAT 19, FIFTH FLOOR.
- FLAT 20, FIFTH FLOOR.
- FLAT 21, SIXTH FLOOR.
- FLAT 22, SIXTH FLOOR.
- FLAT 23, SIXTH FLOOR.
- FLAT 24, SEVENTH FLOOR.
- FLAT 25, SEVENTH FLOOR.

- FLAT 26, EIGHTH FLOOR.
- FLAT 27, EIGHTH FLOOR.
- LIFT PLANT ROOM
- LIFT CORE
- COMMUNAL ACCESS WAY
- CYCLE STORE
- BIN STORE
- COMMUNAL LANDSCAPING
- SITE ACCESS (ALL PARKING UNALLOCATED)
- NEIGHBOURS ACCESS DOOR, OWNERSHIP UNDER 17 East Cromwell Street (formerly 9 and 8A Coburg Street, Edinburgh).



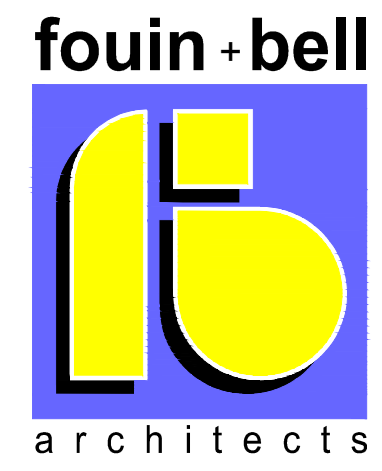
LOCATION PLAN.
SCALE:1:1250.

NOTE:
All proprietary goods and materials are to be fitted in accordance with manufacturer's instructions, Codes of Practice and British Standards. All dimensions to be verified by the Contractor on site. Do not scale drawings, work to figured dimensions only.

© This drawing remains the Copyright of Fouin+Bell Architects Ltd. and may not be reproduced in whole or in any part without prior written permission.

REVISION	DESCRIPTION	DATE
----------	-------------	------

A: 2016.07.04: Flat numbering altered.
B: 2016.07.07: Boundary altered
C: 2017.01.24: Boundary re-confirmed



1 John's Place Edinburgh EH6 7EL
T: 0131 478 7100 F: 0131 478 7111
mail@fouin-bell.com www.fouin-bell.com



PROJECT
RESIDENTIAL DEVELOPMENT
6 COUPER STREET
EDINBURGH

SCALE @ A1	1: 50 @ A1	1: 100 @ A3	DATE	04.07.2016	
DRAWN BY	MCR	CHECKED	PHC	STAGE	DEED

TITLE DEED PLANS

PROJECT NUMBER	DRAWING NUMBER	REVISION
13-328	(TD)01	C

6 Couper Street, Edinburgh
Title deed plans