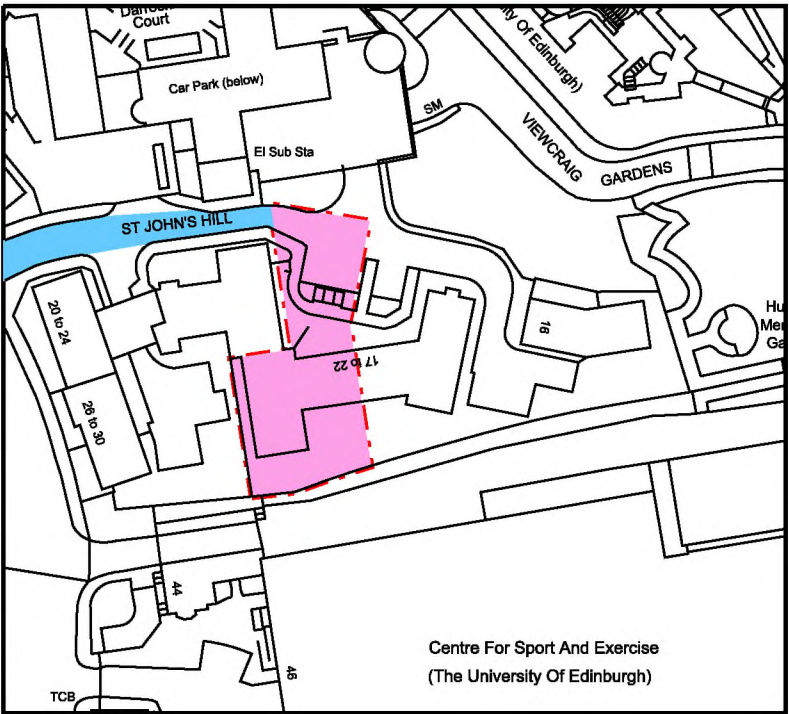
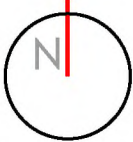
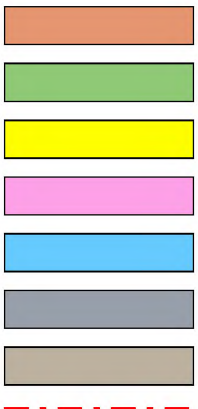


The Development registered under title MID1465 and Flats 18/1 to 18/11 within
have been DPA approved by:
Craig McFadden - 10 November 2016
Craig McFadden (DPA Officer)

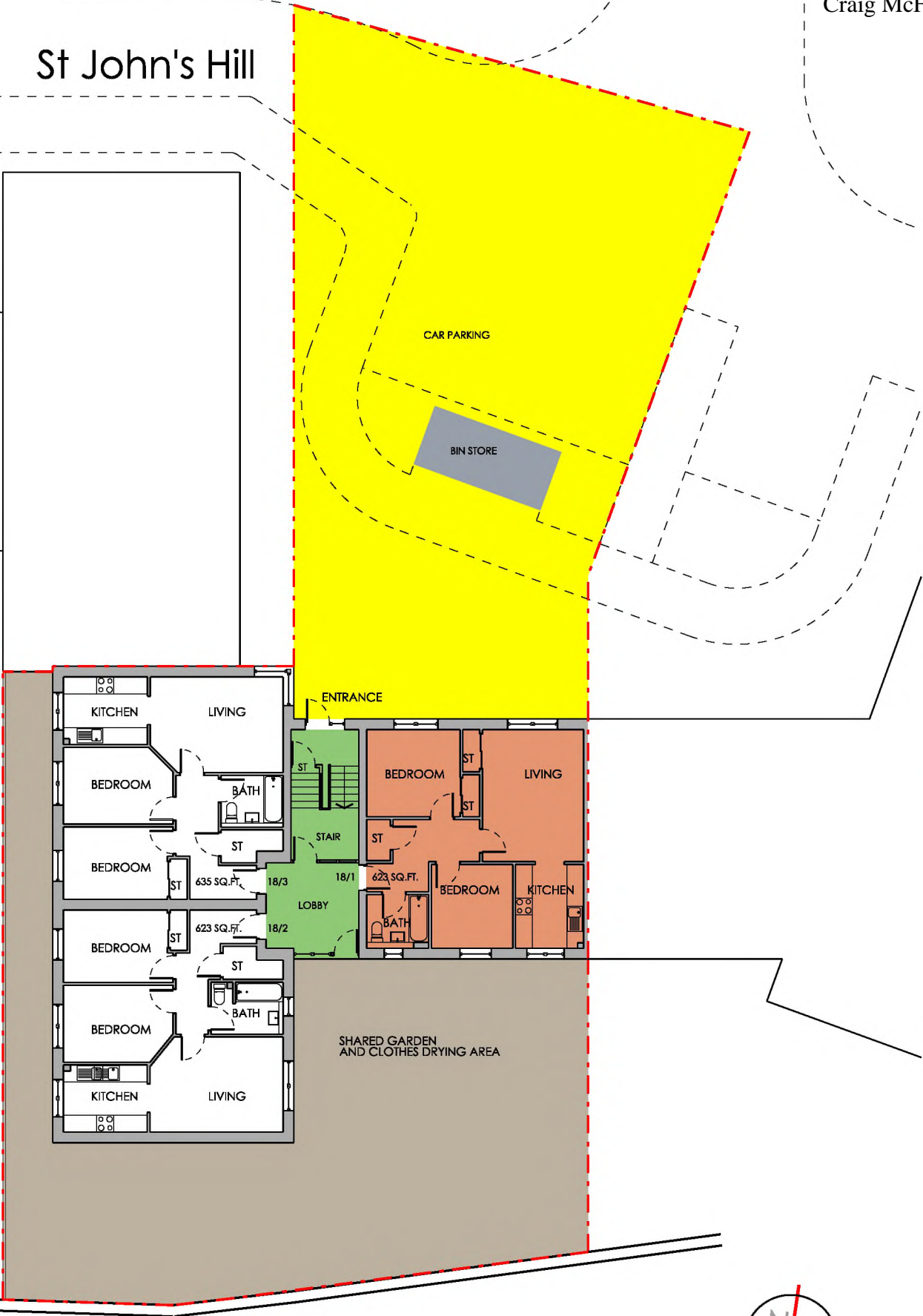


Location Plan, 1:1250

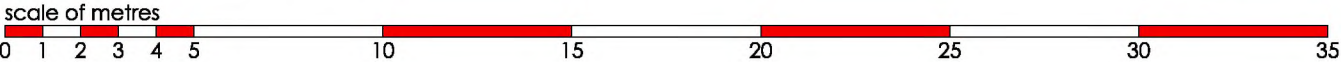
- APARTMENT 18/1
- SHARED AREA WITHIN BUILDING
- PARKING AND EXTERNAL AREAS
- AREA OF REGISTERED LAND BELONGING TO 18 ST JOHN'S HILL
- RIGHT OF ACCESS OVER ROAD
- BIN STORE
- SHARED GARDEN AND CLOTHES DRYING AREA
- SITE BOUNDARY



St John's Hill



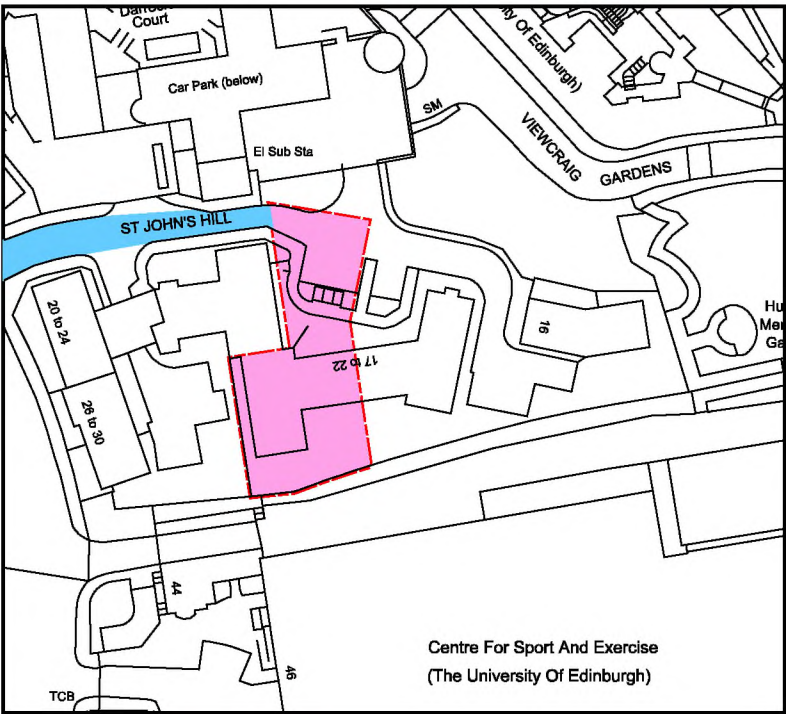
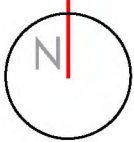
Ground Floor Plan, 1:200



Apartment 18/1 Floor Plan, 1:100

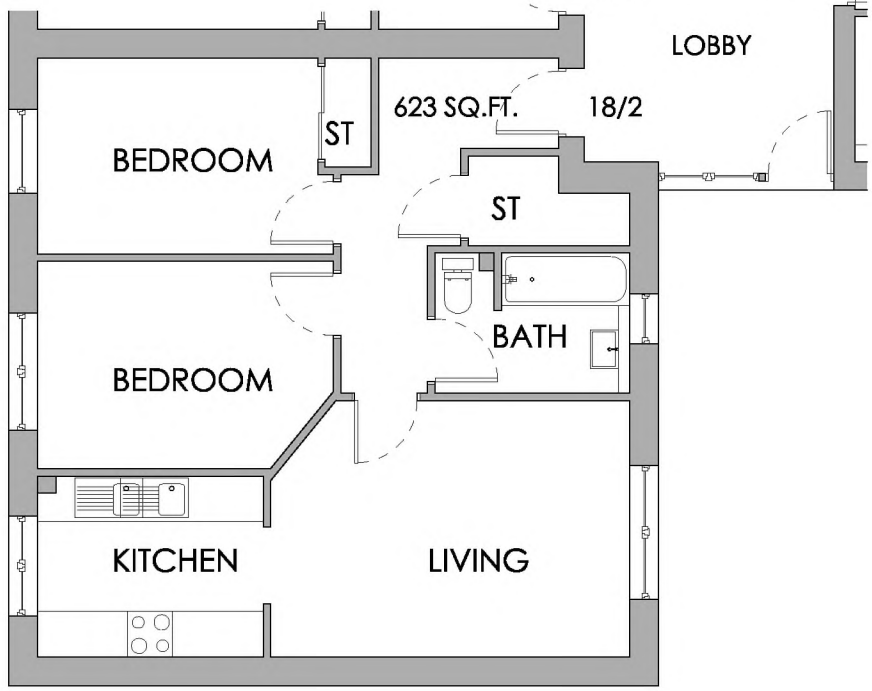
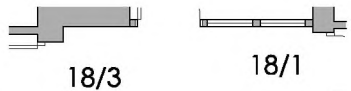
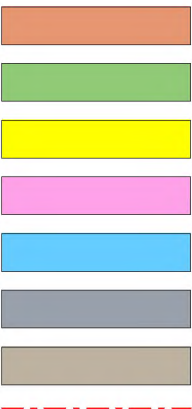
C	02.11.16	JL	OS MAP UPDATED
B	01.11.16	DT	DRAWING UPDATED IN LINE WITH COMMENTS FROM ANDERSON STRATHERN
A	19.10.16	DT	YELLOW FILL COLOUR EXTENDED, BIN STORE HAS GREY INFILL COLOUR, SHARED GARDEN AND CLOTHES DRYING AREA COLOUR AMENDED
rev	date	by	-

susan stephen architects			
project	16118 18 St John's Hill, Edinburgh, EH8 9UQ		
client	Anderson Strathern		
drawing	Title Plan for Apartment 18/1		
dwg no.	TP 01	revision	C
scale	1:200 @A3	drawn	DT
14 Alva Street Edinburgh EH2 4QG t 0131 220 3003 f 0131 220 3022 e info@susanstephenarchitects.com www.susanstephenarchitects.com		all dimensions to be checked on site. this drawing and its data are copyright of : Susan Stephen Architects Ltd and must not be used for any purpose other than that for which it is intended.	



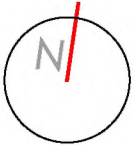
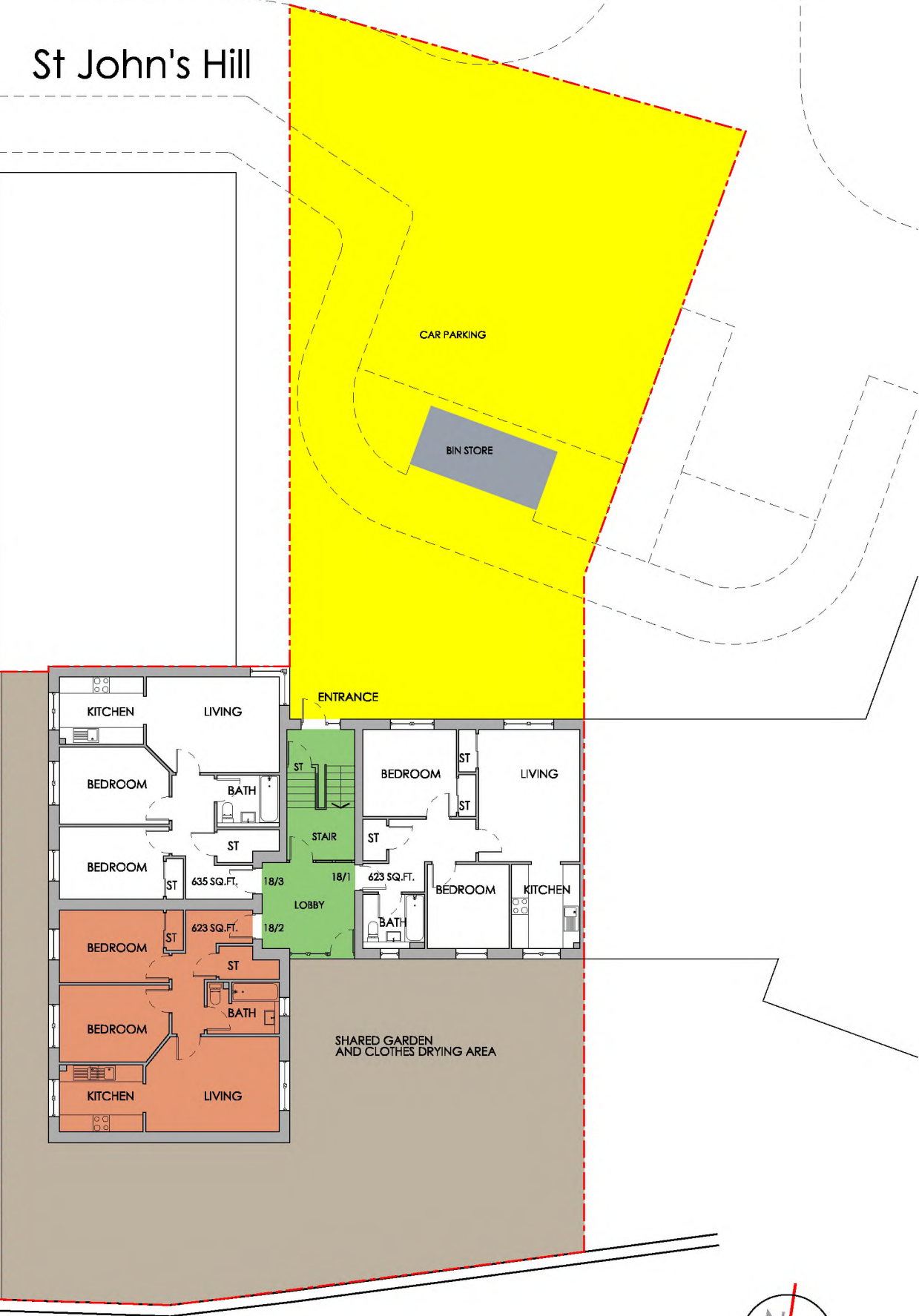
Location Plan, 1:1250

- APARTMENT 18/2
- SHARED AREA WITHIN BUILDING
- PARKING AND EXTERNAL AREAS
- AREA OF REGISTERED LAND BELONGING TO 18 ST JOHN'S HILL
- RIGHT OF ACCESS OVER ROAD
- BIN STORE
- SHARED GARDEN AND CLOTHES DRYING AREA
- SITE BOUNDARY



Apartment 18/2 Floor Plan, 1:100

St John's Hill



Ground Floor Plan, 1:200



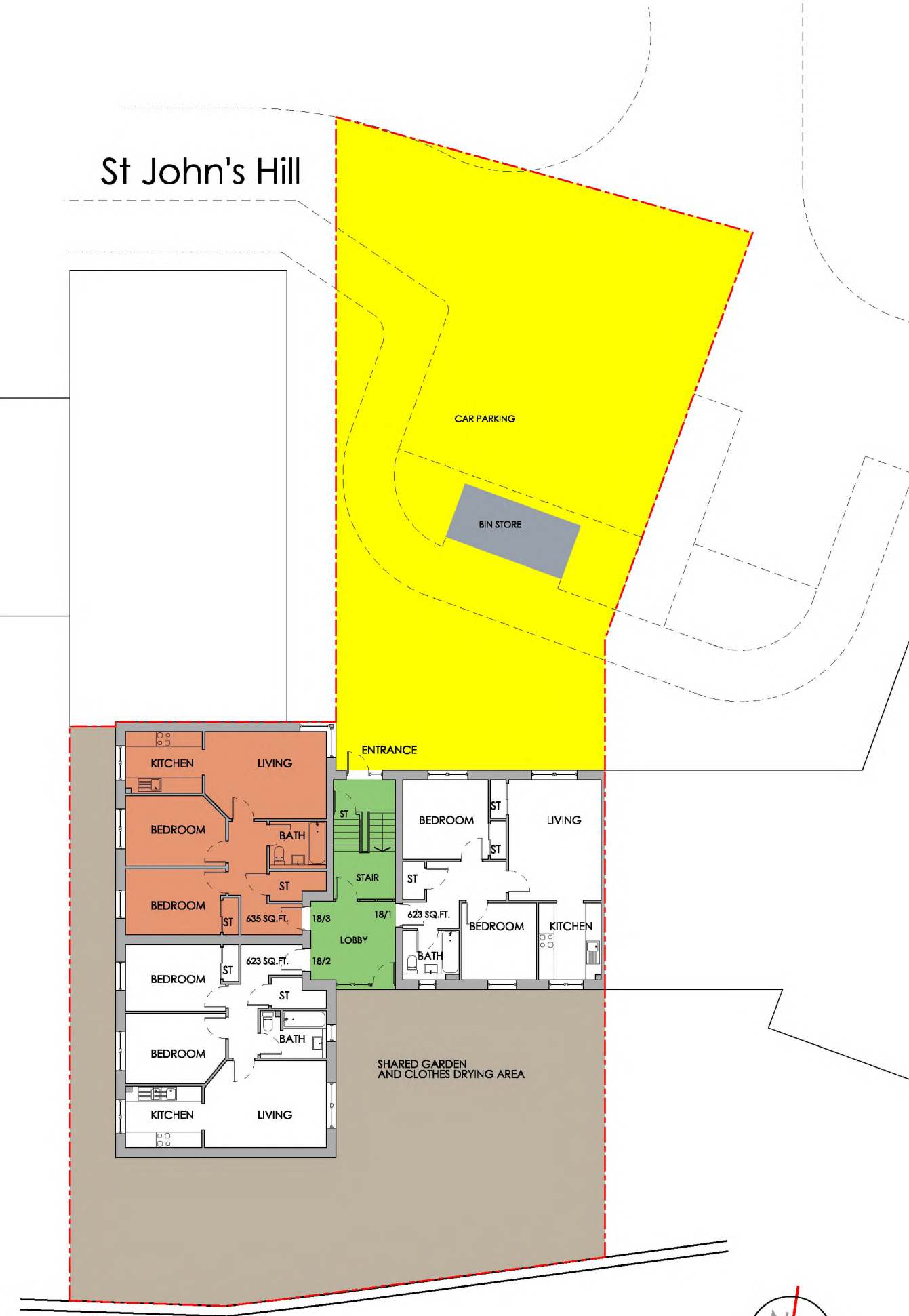
susan stephen architects

project	16118	18 St John's Hill, Edinburgh, EH8 9UQ	
client	Anderson Strathern		
drawing	Title Plan for Apartment 18/2		
dwg no.	TP 02	revision	.
scale	1:200 @A3	drawn	.

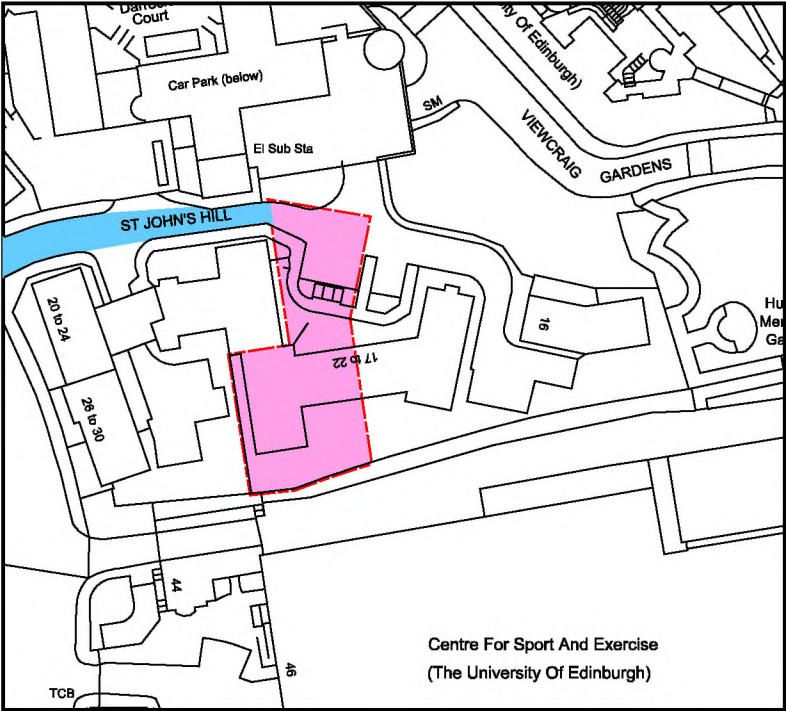
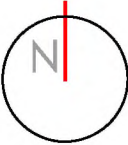
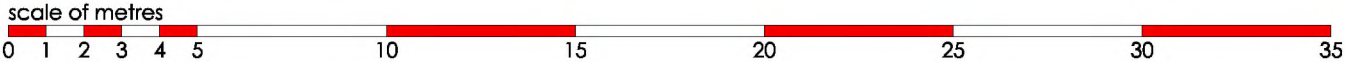
14 Alva Street
Edinburgh EH2 4QG
t 0131 220 3003
f 0131 220 3022
e info@ssarchitects.com
www.susanstephenarchitects.com

all dimensions to be checked on site.
this drawing and its data are copyright of :
Susan Stephen Architects Ltd and must not
be used for any purpose other than that for
which it is intended.

St John's Hill

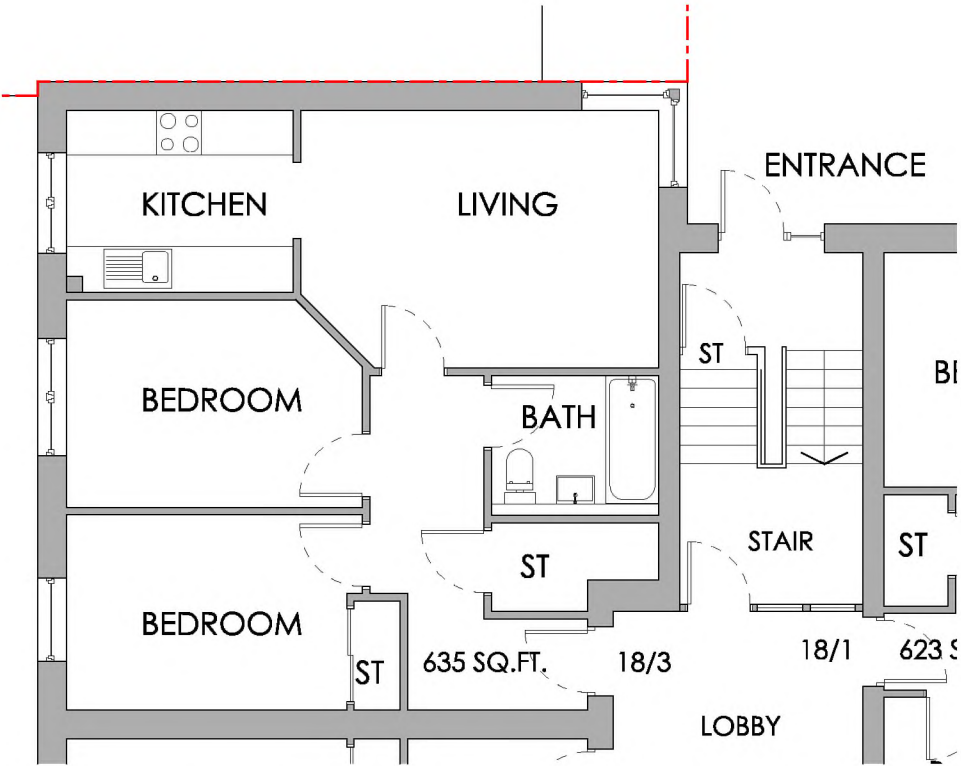
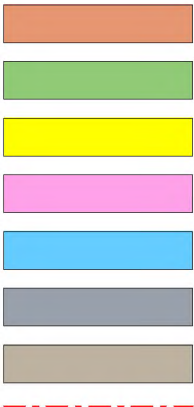


Ground Floor Plan, 1:200



Location Plan, 1:1250

- APARTMENT 18/3
- SHARED AREA WITHIN BUILDING
- PARKING AND EXTERNAL AREAS
- AREA OF REGISTERED LAND BELONGING TO 18 ST JOHN'S HILL
- RIGHT OF ACCESS OVER ROAD
- BIN STORE
- SHARED GARDEN AND CLOTHES DRYING AREA
- SITE BOUNDARY



Apartment 18/3 Floor Plan, 1:100

rev

date

by

susan stephen architects

project

16118

18 St John's Hill, Edinburgh, EH8 9UQ

client

Anderson Strathern

drawing

Title Plan for Apartment 18/3

dwg no.

TP 03

revision

.

scale

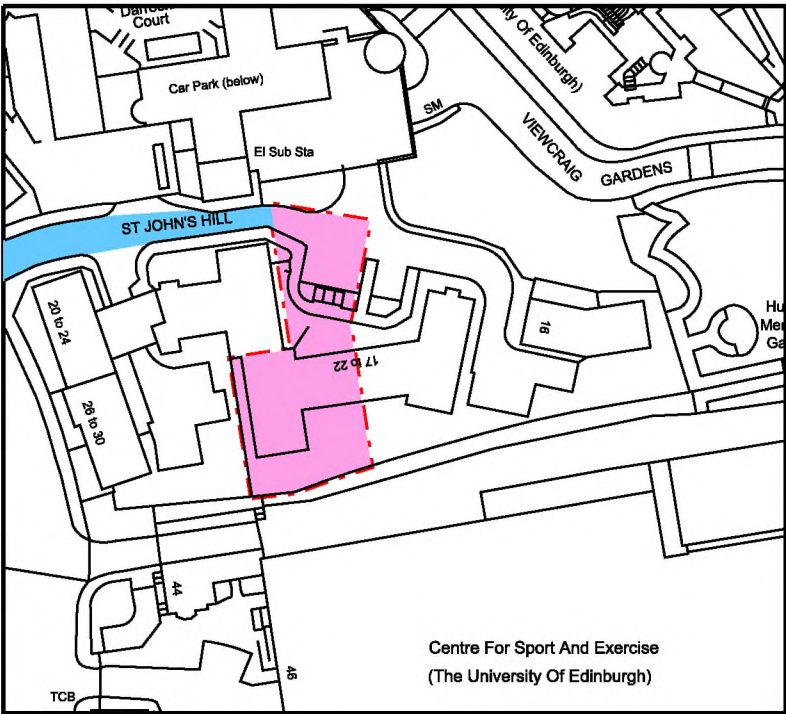
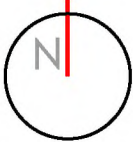
1:200 @A3

drawn

.

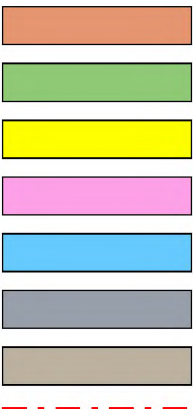
14 Alva Street
Edinburgh EH2 4QG
t 0131 220 3003
f 0131 220 3022
e info@susanarchitects.com
www.susanstephenarchitects.com

all dimensions to be checked on site.
this drawing and its data are copyright of :
Susan Stephen Architects Ltd and must not
be used for any purpose other than that for
which it is intended.



Location Plan, 1:1250

- APARTMENT 18/4
- SHARED AREA WITHIN BUILDING
- PARKING AND EXTERNAL AREAS
- AREA OF REGISTERED LAND BELONGING TO 18 ST JOHN'S HILL
- RIGHT OF ACCESS OVER ROAD
- BIN STORE
- SHARED GARDEN AND CLOTHES DRYING AREA
- SITE BOUNDARY



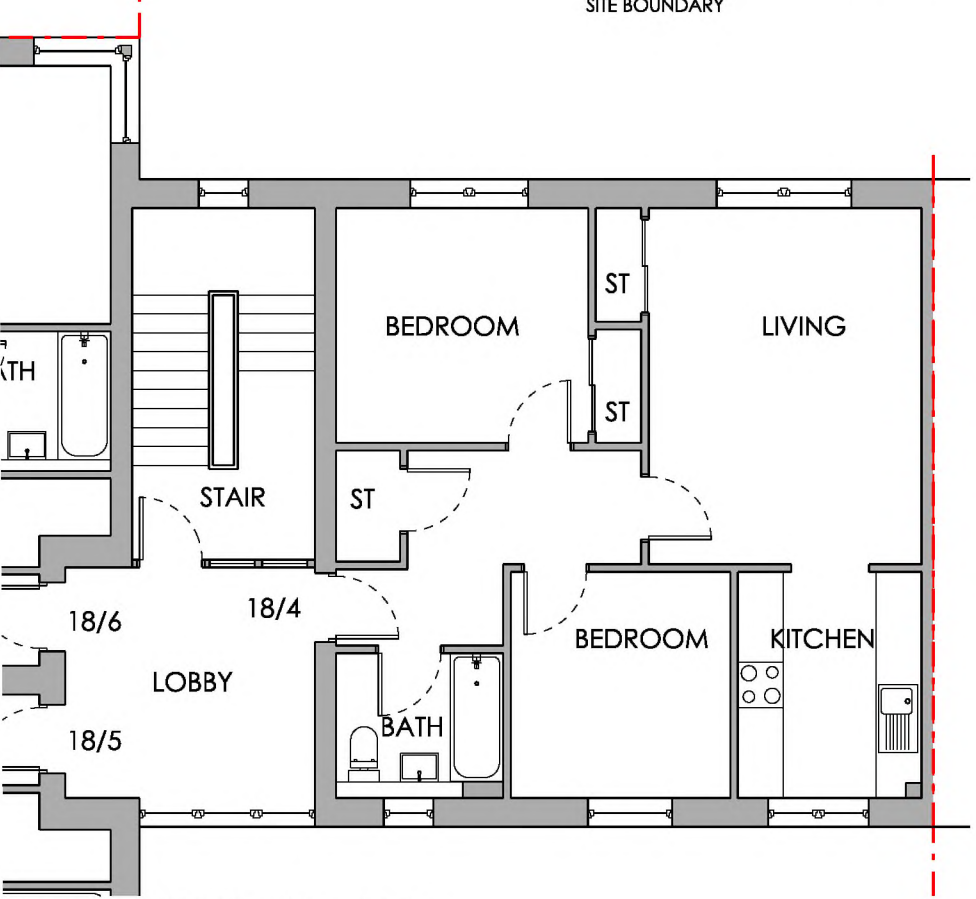
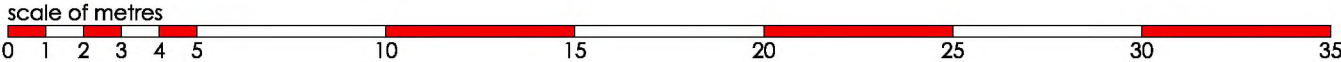
St John's Hill

CAR PARKING

BIN STORE



First Floor Plan, 1:200



Apartment 18/4 Floor Plan, 1:100

rev

date

by

susan stephen architects

project

16118

18 St John's Hill, Edinburgh, EH8 9UQ

client

Anderson Strathern

drawing

Title Plan for Apartment 18/4

dwg no.

TP 04

revision

.

scale

1:200 @A3

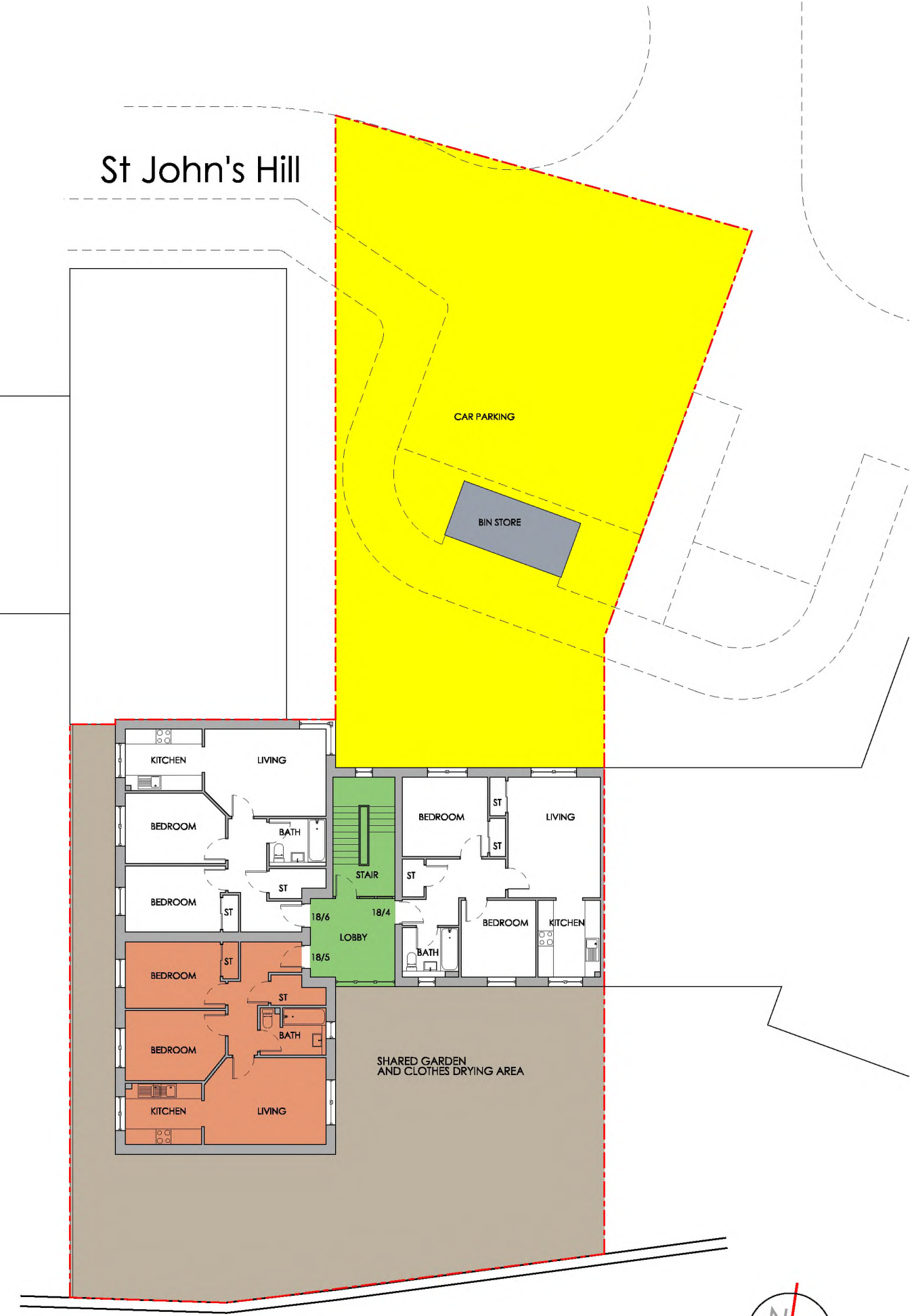
drawn

.

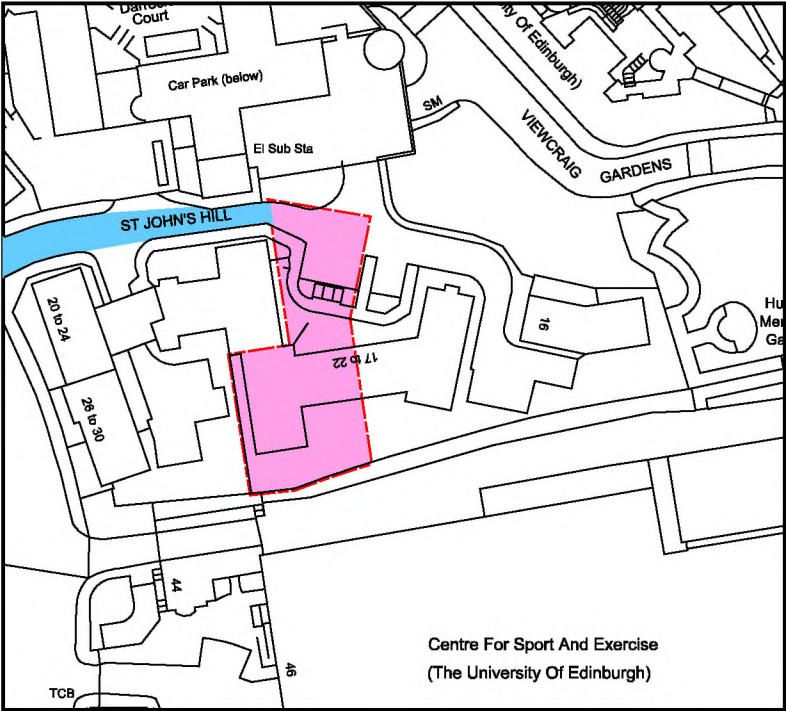
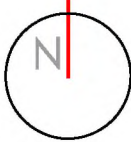
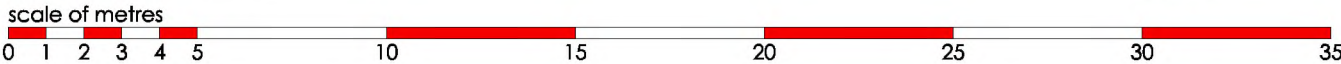
14 Alva Street
Edinburgh EH2 4QG
t 0131 220 3003
f 0131 220 3022
e info@sarchitects.com
www.susanstephenarchitects.com

all dimensions to be checked on site.
this drawing and its data are copyright of :
Susan Stephen Architects Ltd and must not
be used for any purpose other than that for
which it is intended.

St John's Hill

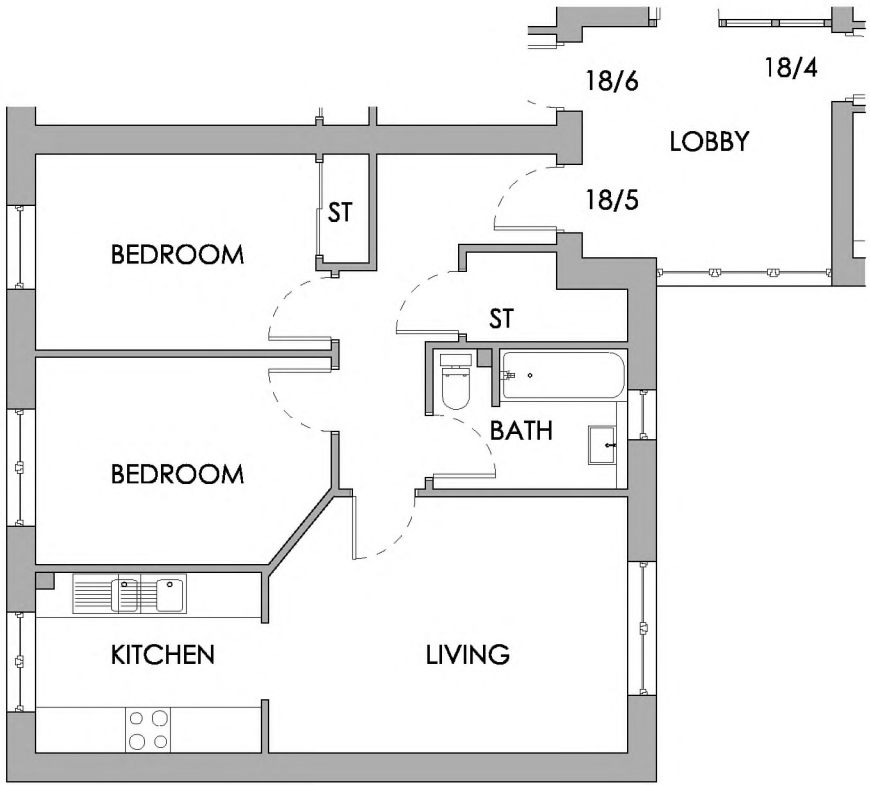
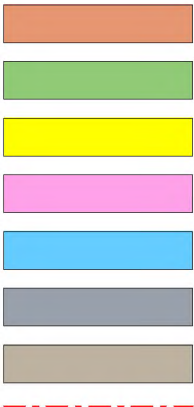


First Floor Plan, 1:200



Location Plan, 1:1250

- APARTMENT 18/5
- SHARED AREA WITHIN BUILDING
- PARKING AND EXTERNAL AREAS
- AREA OF REGISTERED LAND BELONGING TO 18 ST JOHN'S HILL
- RIGHT OF ACCESS OVER ROAD
- BIN STORE
- SHARED GARDEN AND CLOTHES DRYING AREA
- SITE BOUNDARY



Apartment 18/5 Floor Plan, 1:100

rev

date

by

susan stephen architects

project

16118

18 St John's Hill, Edinburgh, EH8 9UQ

client

Anderson Strathern

drawing

Title Plan for Apartment 18/5

dwg no.

TP 05

revision

.

scale

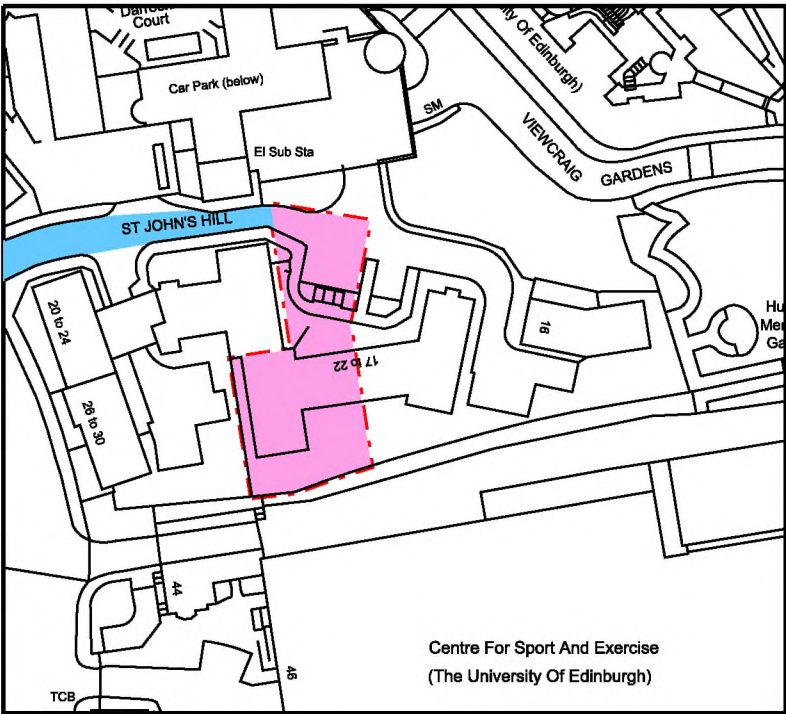
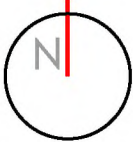
1:200 @A3

drawn

.

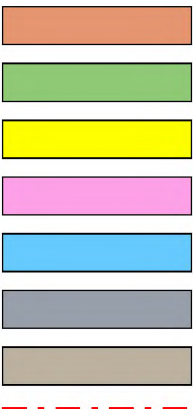
14 Alva Street
Edinburgh EH2 4QG
t 0131 220 3003
f 0131 220 3022
e info@ssarchitects.com
www.susanstephenarchitects.com

all dimensions to be checked on site.
this drawing and its data are copyright of :
Susan Stephen Architects Ltd and must not
be used for any purpose other than that for
which it is intended.



Location Plan, 1:1250

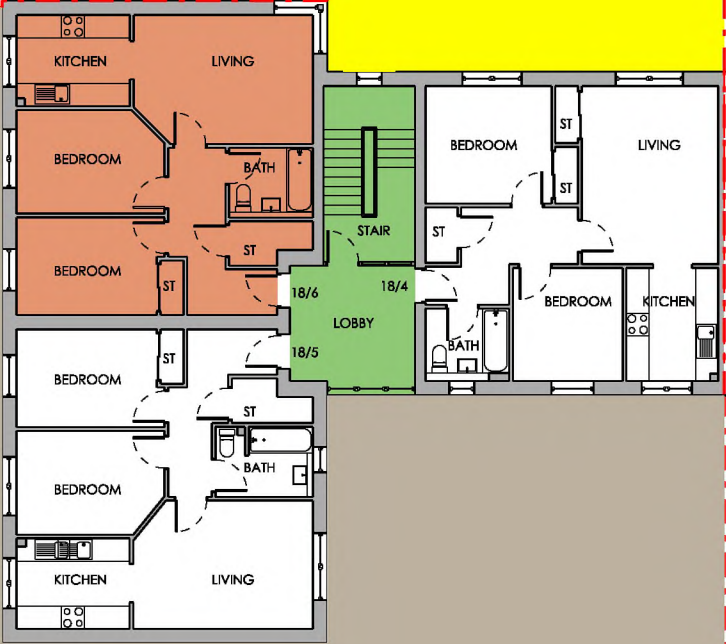
- APARTMENT 18/6
- SHARED AREA WITHIN BUILDING
- PARKING AND EXTERNAL AREAS
- AREA OF REGISTERED LAND BELONGING TO 18 ST JOHN'S HILL
- RIGHT OF ACCESS OVER ROAD
- BIN STORE
- SHARED GARDEN AND CLOTHES DRYING AREA
- SITE BOUNDARY



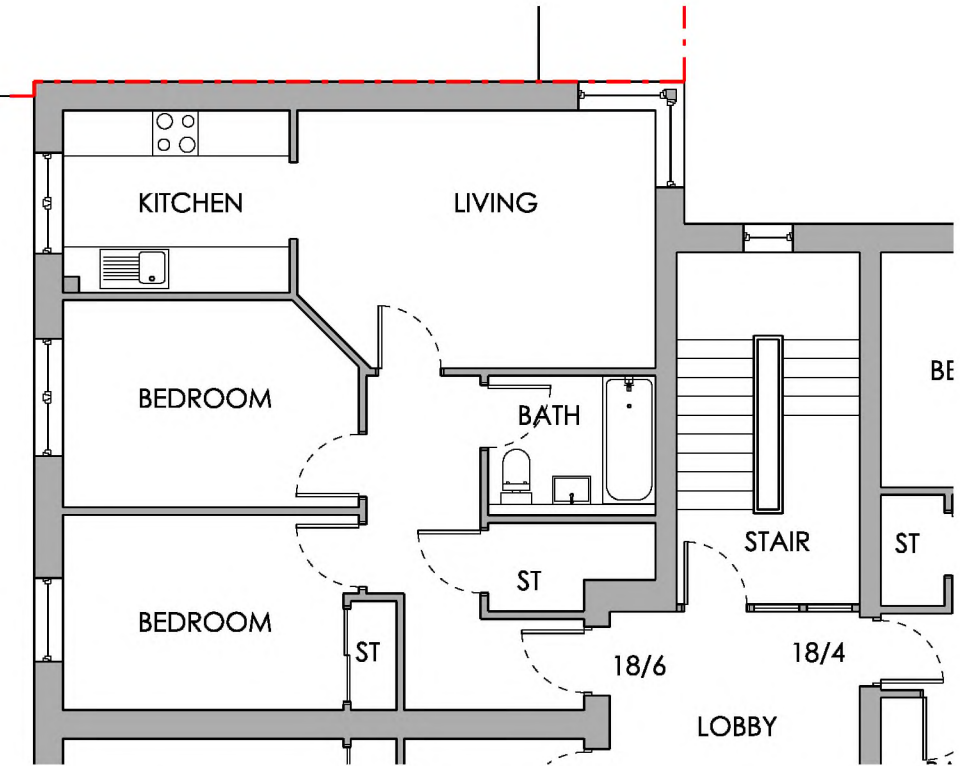
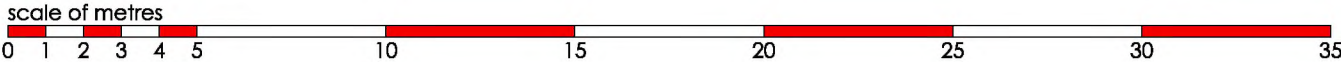
St John's Hill

CAR PARKING

BIN STORE



First Floor Plan, 1:200



Apartment 18/6 Floor Plan, 1:100

rev

date

by

susan stephen architects

project

16118

18 St John's Hill, Edinburgh, EH8 9UQ

client

Anderson Strathern

drawing

Title Plan for Apartment 18/6

dwg no.

TP 06

revision

.

scale

1:200 @A3

drawn

.

14 Alva Street
Edinburgh EH2 4QG
t 0131 220 3003
f 0131 220 3022
e info@susanarchitects.com
www.susanstephenarchitects.com

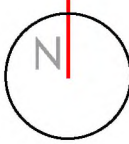
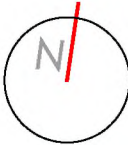
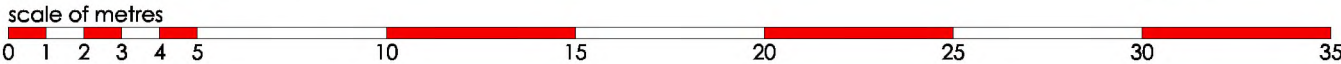
all dimensions to be checked on site.
this drawing and its data are copyright of :
Susan Stephen Architects Ltd and must not
be used for any purpose other than for
which it is intended.

St John's Hill

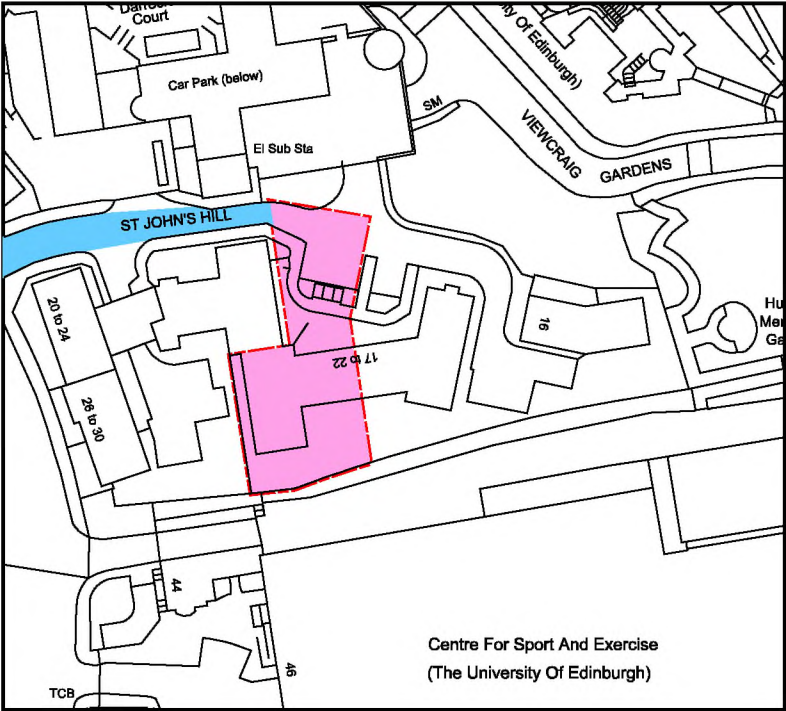
CAR PARKING

BIN STORE

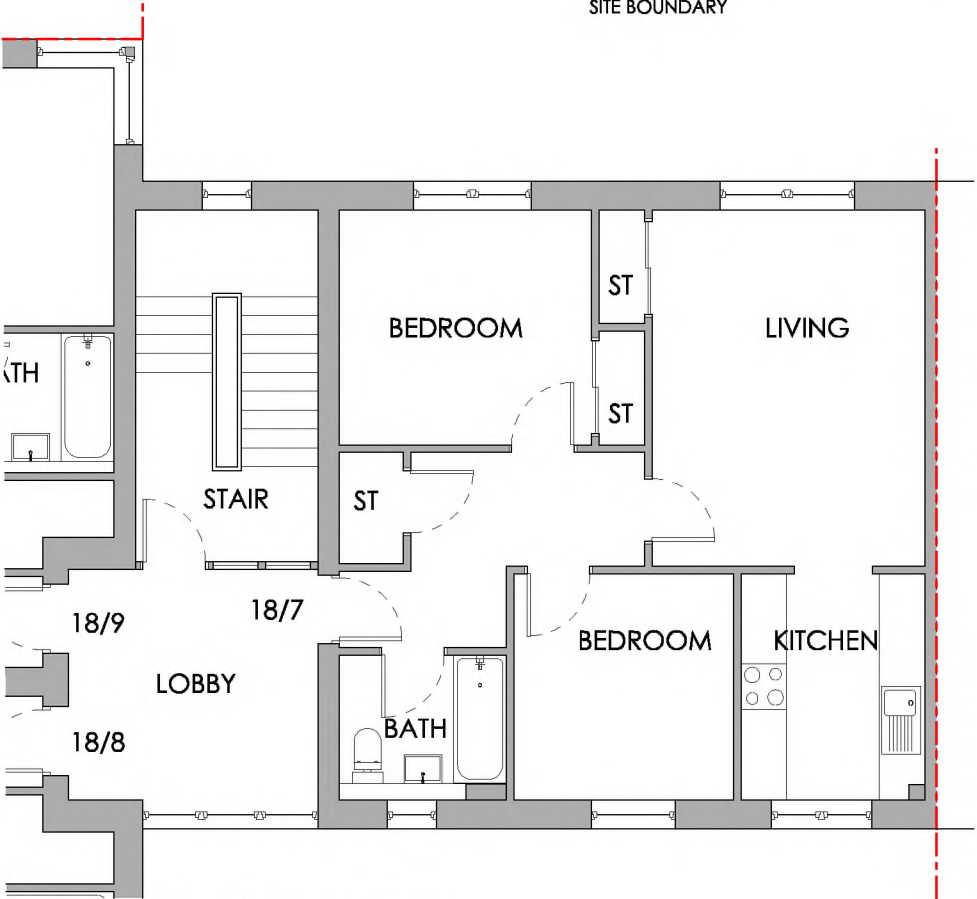
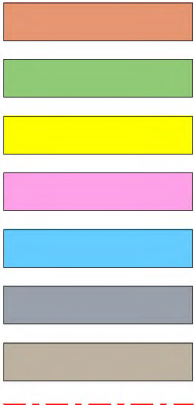
Second Floor Plan, 1:200



Location Plan, 1:1250



- APARTMENT 18/7
- SHARED AREA WITHIN BUILDING
- PARKING AND EXTERNAL AREAS
- AREA OF REGISTERED LAND BELONGING TO 18 ST JOHN'S HILL
- RIGHT OF ACCESS OVER ROAD
- BIN STORE
- SHARED GARDEN AND CLOTHES DRYING AREA
- SITE BOUNDARY



Apartment 18/7 Floor Plan, 1:100

rev

date

by

susan stephen architects

project

16118

18 St John's Hill, Edinburgh, EH8 9UQ

client

Anderson Strathern

drawing

Title Plan for Apartment 18/7

dwg no.

TP 07

revision

.

scale

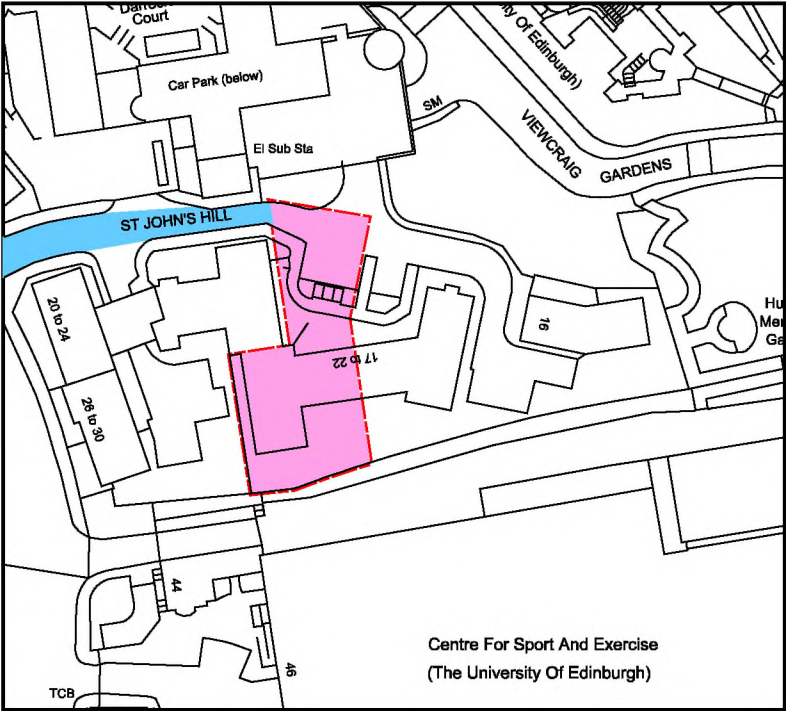
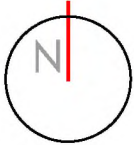
1:200 @A3

drawn

.

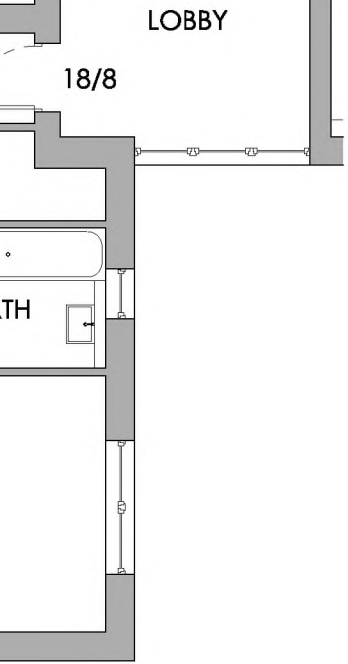
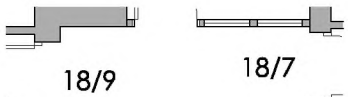
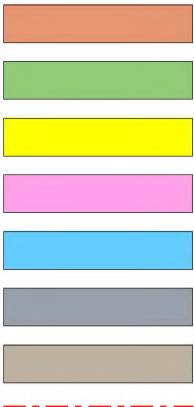
14 Alva Street
Edinburgh EH2 4QG
t 0131 220 3003
f 0131 220 3022
e info@susanarchitects.com
www.susanstephenarchitects.com

all dimensions to be checked on site.
this drawing and its data are copyright of :
Susan Stephen Architects Ltd and must not
be used for any purpose other than that for
which it is intended.



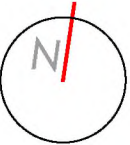
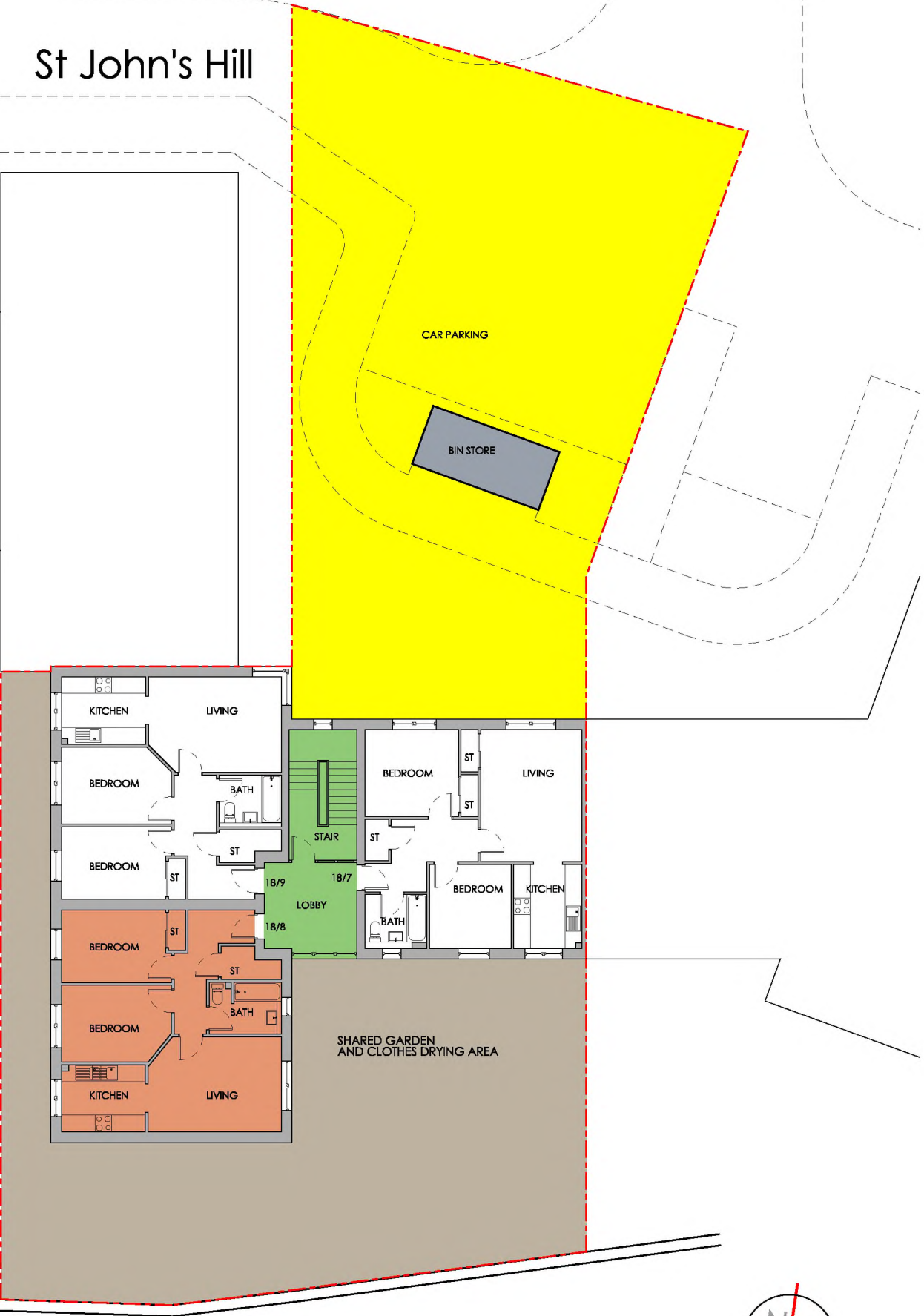
Location Plan, 1:1250

- APARTMENT 18/8
- SHARED AREA WITHIN BUILDING
- PARKING AND EXTERNAL AREAS
- AREA OF REGISTERED LAND BELONGING TO 18 ST JOHN'S HILL
- RIGHT OF ACCESS OVER ROAD
- BIN STORE
- SHARED GARDEN AND CLOTHES DRYING AREA
- SITE BOUNDARY

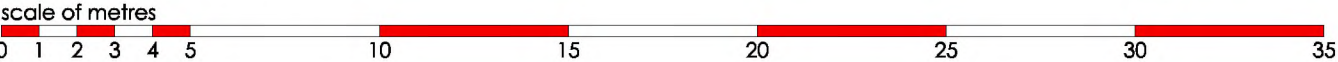


Apartment 18/8 Floor Plan, 1:100

St John's Hill



Second Floor Plan, 1:200



rev

date

by

susan stephen architects

project

16118

18 St John's Hill, Edinburgh, EH8 9UQ

client

Anderson Strathern

drawing

Title Plan for Apartment 18/8

dwg no.

TP 08

revision

.

scale

1:200 @A3

drawn

.

14 Alva Street
Edinburgh EH2 4QG
t 0131 220 3003
f 0131 220 3022
e info@ssarchitects.com
www.susanstephenarchitects.com

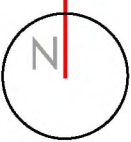
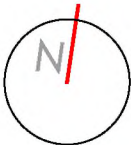
all dimensions to be checked on site.
this drawing and its data are copyright of :
Susan Stephen Architects Ltd and must not
be used for any purpose other than that for
which it is intended.

St John's Hill

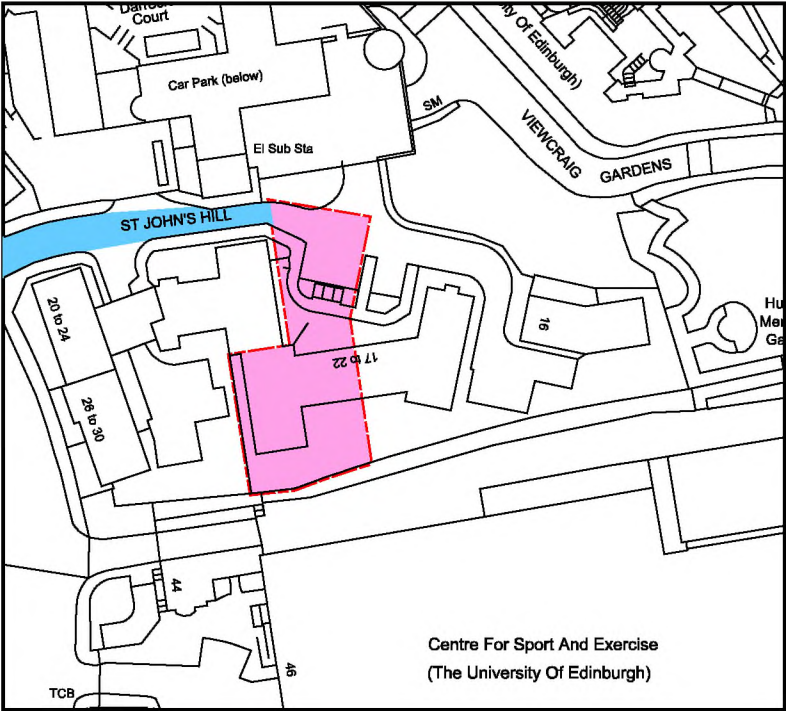
CAR PARKING

BIN STORE

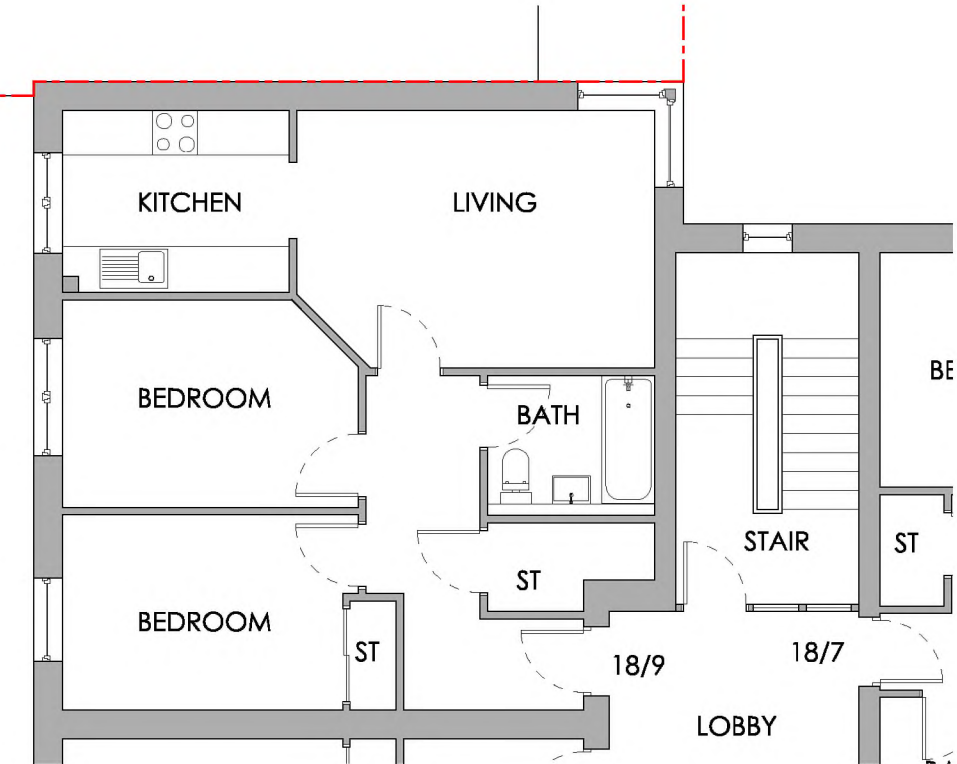
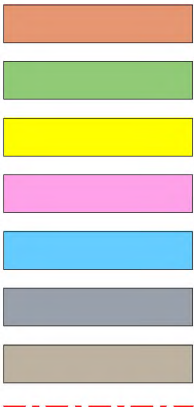
Second Floor Plan, 1:200



Location Plan, 1:1250



- APARTMENT 18/9
- SHARED AREA WITHIN BUILDING
- PARKING AND EXTERNAL AREAS
- AREA OF REGISTERED LAND BELONGING TO 18 ST JOHN'S HILL
- RIGHT OF ACCESS OVER ROAD
- BIN STORE
- SHARED GARDEN AND CLOTHES DRYING AREA
- SITE BOUNDARY



Apartment 18/9 Floor Plan, 1:100

rev

date

by

susan stephen architects

project

16118

18 St John's Hill, Edinburgh, EH8 9UQ

client

Anderson Strathern

drawing

Title Plan for Apartment 18/9

dwg no.

TP 09

revision

.

scale

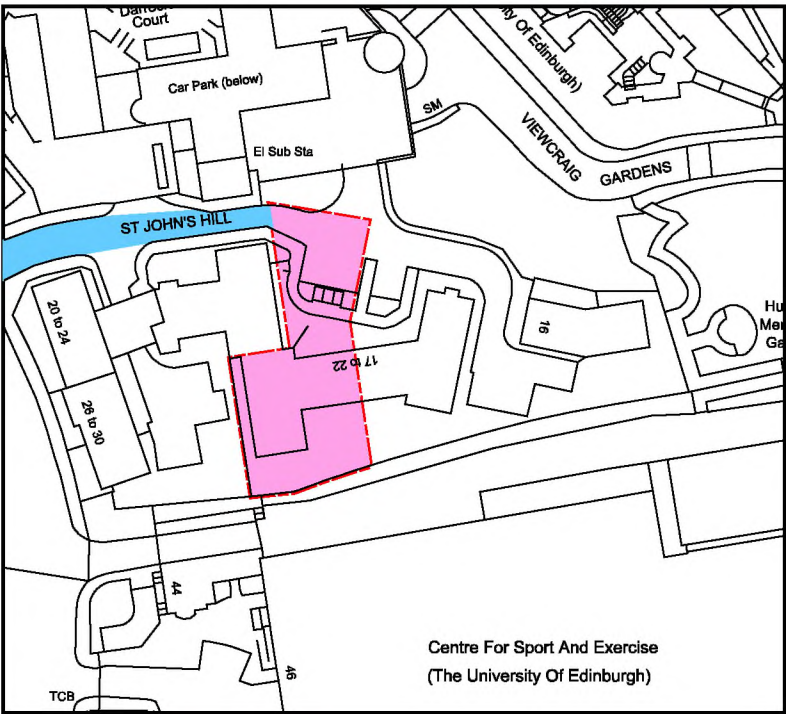
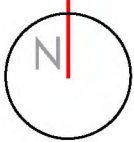
1:200 @A3

drawn

.

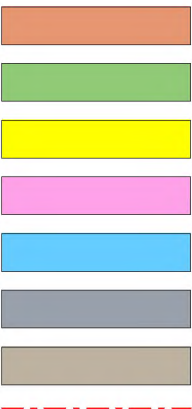
14 Alva Street
Edinburgh EH2 4QG
t 0131 220 3003
f 0131 220 3022
e info@susanarchitects.com
www.susanstephenarchitects.com

all dimensions to be checked on site.
this drawing and its data are copyright of :
Susan Stephen Architects Ltd and must not
be used for any purpose other than that for
which it is intended.



Location Plan, 1:1250

- APARTMENT 18/10
- SHARED AREA WITHIN BUILDING
- PARKING AND EXTERNAL AREAS
- AREA OF REGISTERED LAND BELONGING TO 18 ST JOHN'S HILL
- RIGHT OF ACCESS OVER ROAD
- BIN STORE
- SHARED GARDEN AND CLOTHES DRYING AREA
- SITE BOUNDARY



St John's Hill

CAR PARKING

BIN STORE

KITCHEN

LIVING

BEDROOM

BATH

BEDROOM

ST

STAIR

18/11

18/10

BEDROOM

ST

BEDROOM

ST

BATH

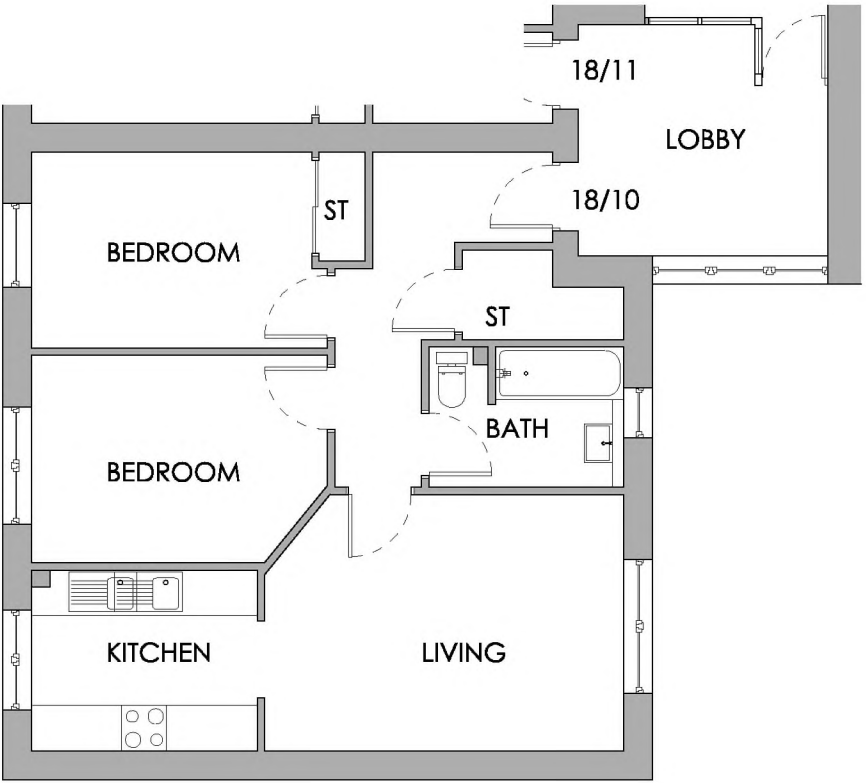
KITCHEN

LIVING

SHARED GARDEN AND CLOTHES DRYING AREA



Third Floor Plan, 1:200



Apartment 18/10 Floor Plan, 1:100

rev

date

by

susan stephen architects

project

16118

18 St John's Hill, Edinburgh, EH8 9UQ

client

Anderson Strathern

drawing

Title Plan for Apartment 18/10

dwg no.

TP 10

revision

.

scale

1:200 @A3

drawn

.

14 Alva Street
Edinburgh EH2 4QG
t 0131 220 3003
f 0131 220 3022
e info@ssarchitects.com
www.susanstephenarchitects.com

all dimensions to be checked on site.
this drawing and its data are copyright of :
Susan Stephen Architects Ltd and must not
be used for any purpose other than for
which it is intended.



BIN STOR

Centre For Sport And Exercise
(The University Of Edinburgh)

APARTMENT 18/11

SHARED AREA WITHIN BUILDING

PARKING AND EXTERNAL AREAS

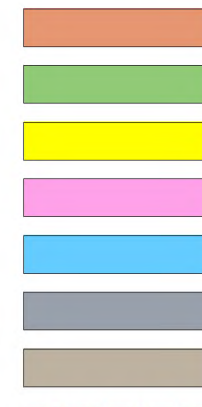
AREA OF REGISTERED LAND BELONGING TO
18 ST JOHN'S HILL

RIGHT OF ACCESS OVER ROAD

BIN STORE

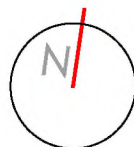
SHARED GARDEN AND CLOTHES DRYING AREA

SITE BOUNDARY



Third Floor Plan, 1:200

scale of metres



LIVING

BEDROOM

BATH

ST

STAIR

18/11

LOBBY

Apartment 18/11 Floor Plan, 1:100

rev | date | by | -

susan stephen architects

project	16118	18 St John's Hill, Edinburgh, EH8 9UQ	
client	Anderson Strathern		
drawing	Title Plan for Apartment 18/11		
dwg no.	TP 11	revision	.
scale	1:200 @A3	drawn	.
<div>14 Alva Street Edinburgh EH2 4QG t 0131 220 3003 e info@susanstephenarchitects.com www.susanstephenarchitects.com</div>		all dimensions to be checked on site. this drawing and its data are copyright of : Susan Stephen Architects Ltd and must not be used for any purpose other than that for which it is intended.	