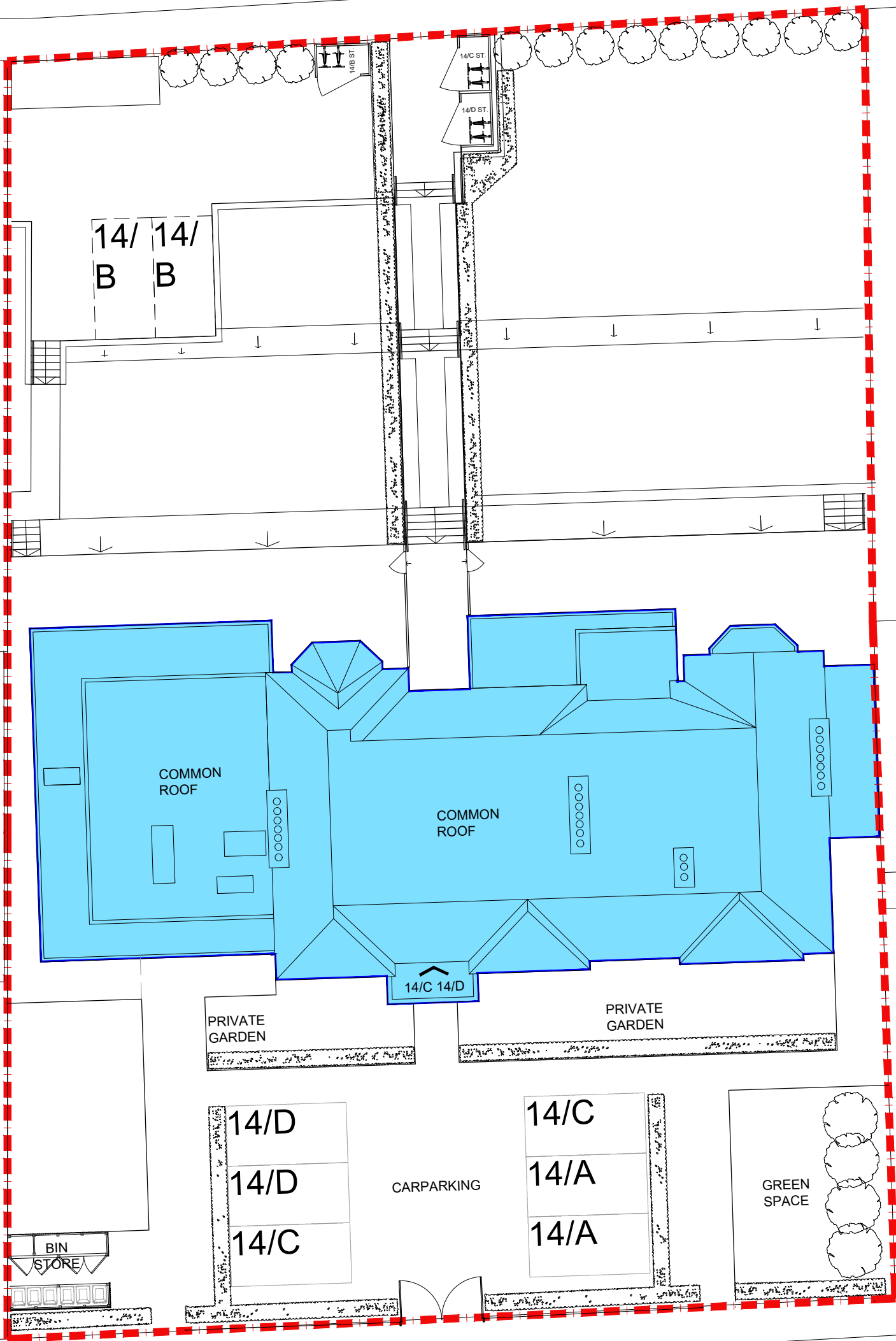


The Development registered under title ELN17813 and plots 14/A, 14/B, 14/C and 14/D within have been DPA approved by:
Craig McFadden - 12 July 2019
Craig McFadden (DPA Officer)



All levels and dimensions to be checked on site prior to construction / fabrication; report discrepancies immediately. Do not scale dimensions from this drawings. This drawing is copyright protected.

REVISIONS
-- 27.06.19 EA First Issue
A 03.07.19 EA Carparking rev
B 10.07.19 EA Hatch revisions
C 12.07.19 EA Store Revisions

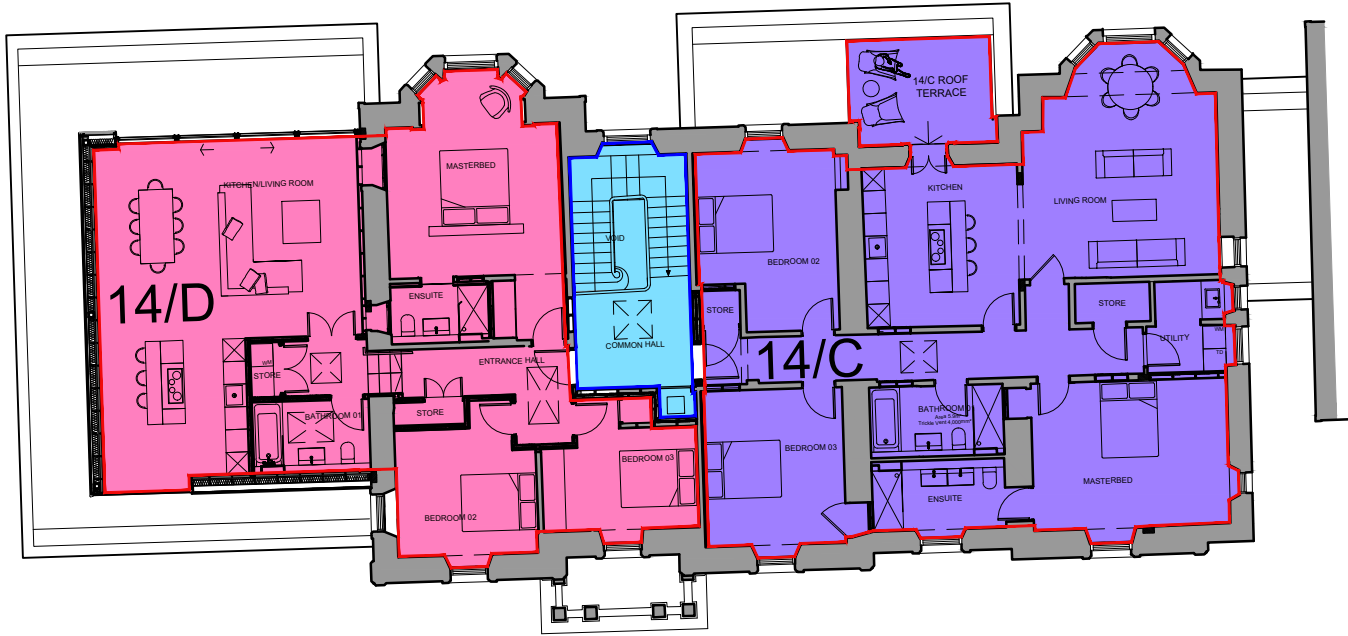
KEY
Indicates plot boundary
Indicates parking area
Indicates bins stores
Indicates Common Area
Indicates Flat 14 / A
Indicates Flat 14 / B
Indicates Flat 14 / C
Indicates Flat 14 / D

All levels and dimensions to be checked on site prior to construction / fabrication; report discrepancies immediately. Do not scale dimensions from this drawings. This drawing is copyright protected.

REVISIONS
-- 27.06.19 EA First Issue
A 03.07.19 EA Carparking Rev
B 10.07.19 EA Hatch revisions
C 12.07.19 EA Store revisions

KEY

- Indicates plot boundary
- Indicates parking area
- Indicates bins stores
- Indicates Common Area
- Indicates Flat 14 / A
- Indicates Flat 14 / B
- Indicates Flat 14 / C
- Indicates Flat 14 / D



01 First Floor Plan
1:200

01 Ground Floor Plan
1:200