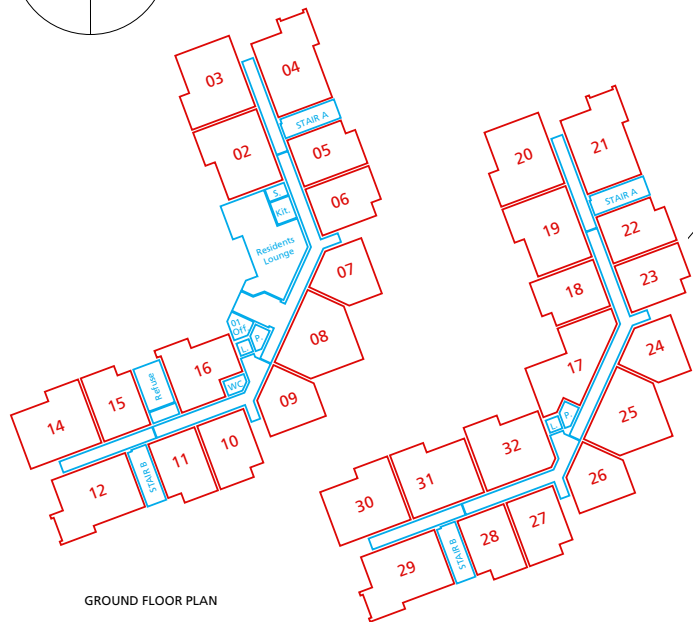
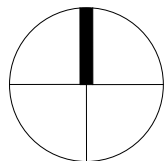


The Development registered under Title INV38955 and flats 2 to 12 and 14 to 55 within have been DPA approved by:

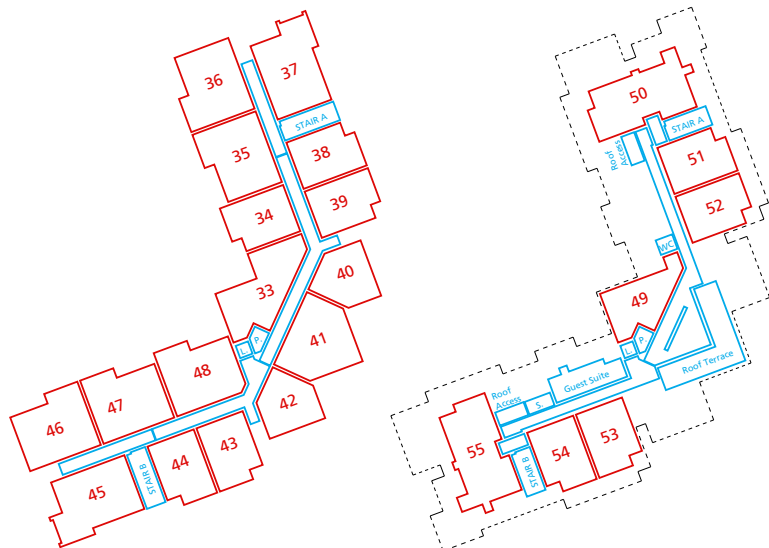
*D. McIntyre - 13th July 2018*

Danielle McIntyre (DPA Officer)

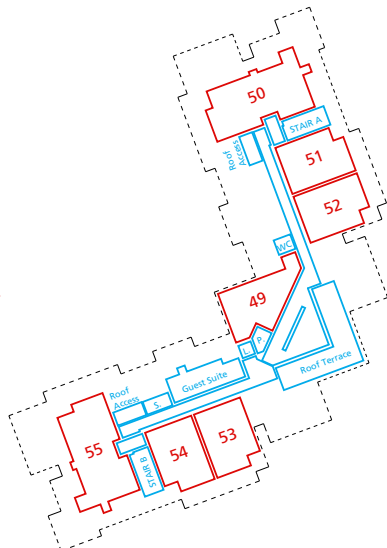


GROUND FLOOR PLAN

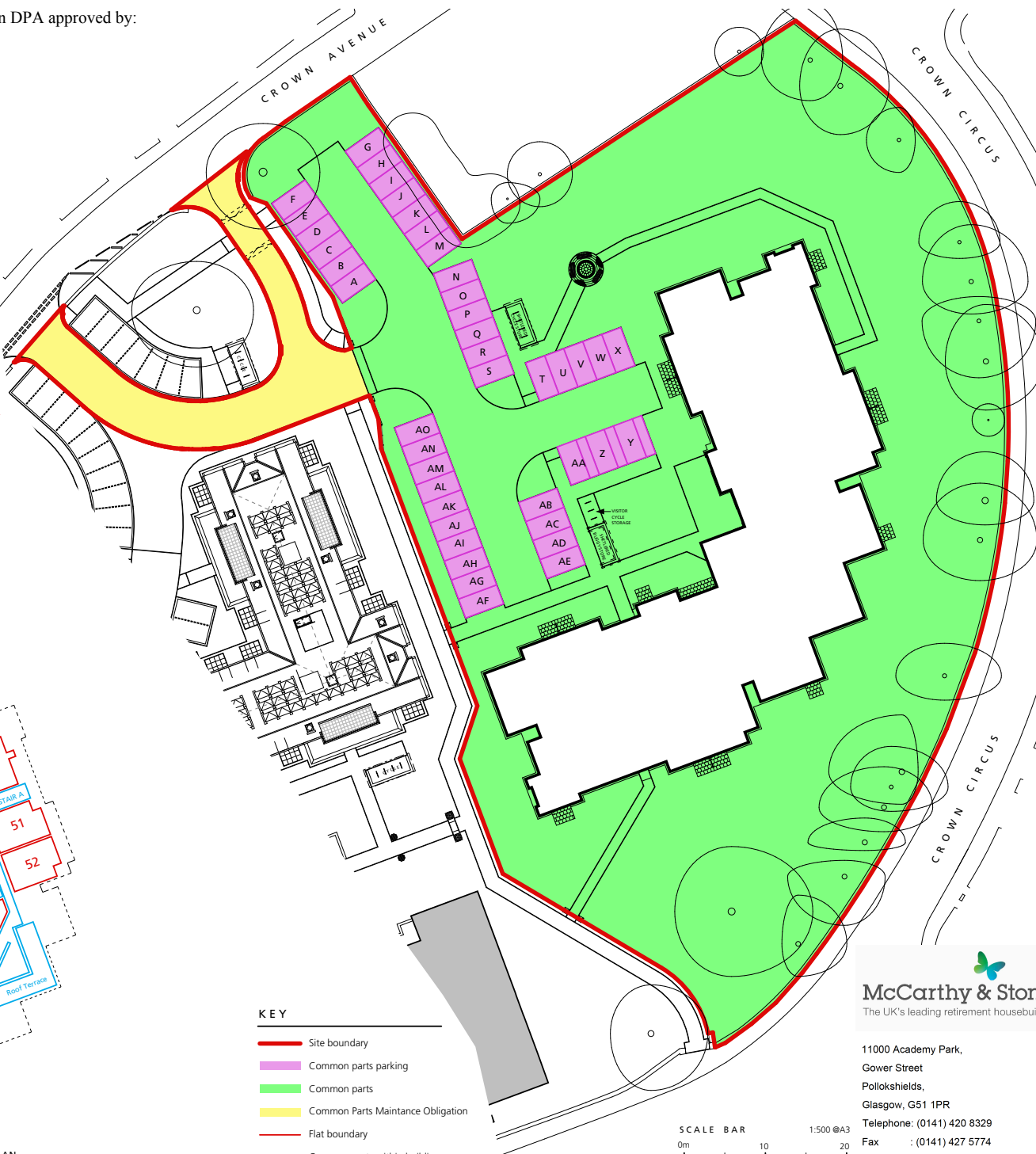
FIRST FLOOR PLAN



SECOND FLOOR PLAN



THIRD FLOOR PLAN



# KEY

- Site boundary
- Common parts parking
- Common parts
- Common Parts Maintenance Obligation
- Flat boundary
- Common parts within building

SCALE BAR  
0m 10 20  
1:500 @A3

**McCarthy & Stone**  
The UK's leading retirement housebuilder

11000 Academy Park,  
Gower Street  
Pollokshields,  
Glasgow, G51 1PR  
Telephone: (0141) 420 8329  
Fax : (0141) 427 5774  
Scale 1:500 @ A3

OAKWOOD COURT - MIDMILLS, CROWN AVENUE - DEVELOPMENT PLAN APPROVAL