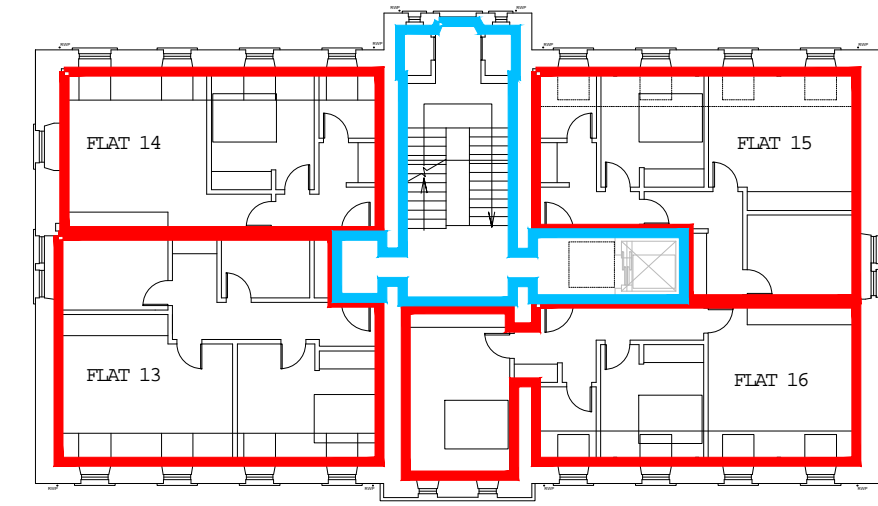


The development registered under title DMF18296 and plots 1 to 16 within  
 have been DPA approved by:

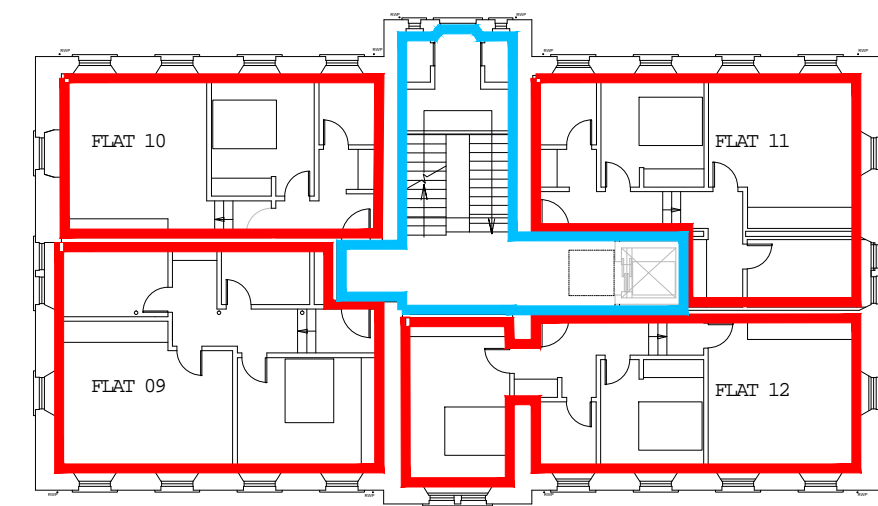
*S Pardue - 8th March 2019*

Stuart Pardue (DPA officer)

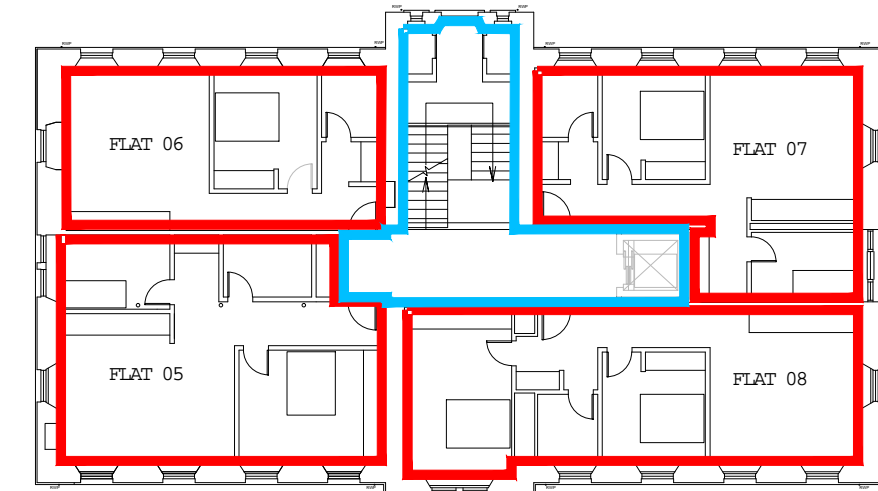
1. Do not scale this drawing - if in doubt ask.  
 2. All sizes to be checked on site prior to construction.  
 3. This drawing is the copyright of the author.



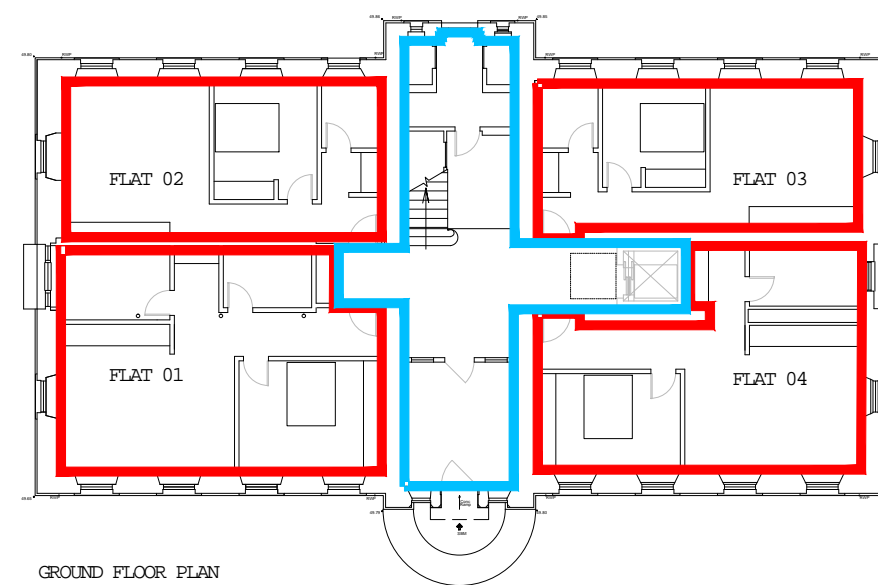
THIRD FLOOR PLAN



SECOND FLOOR PLAN



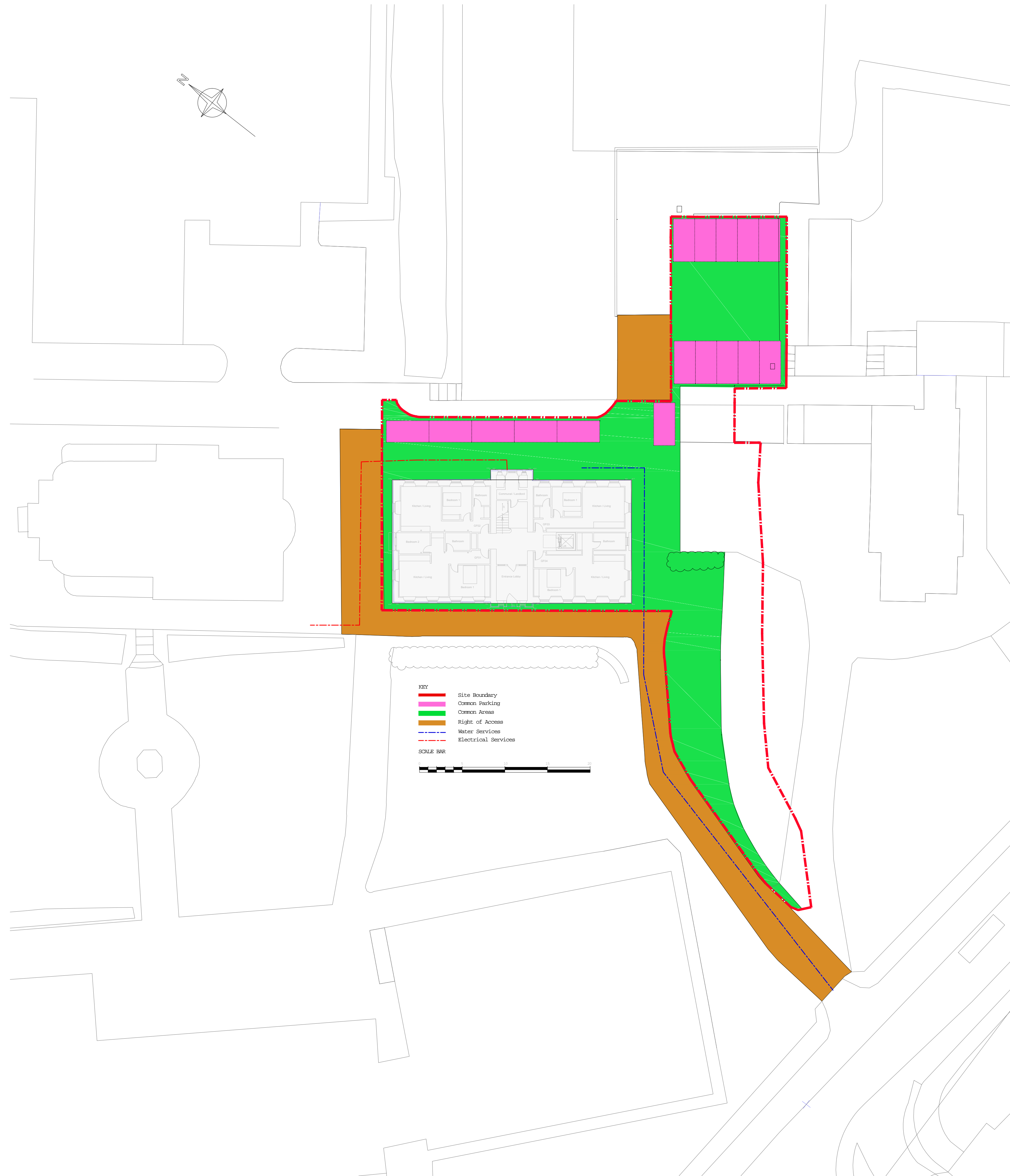
FIRST FLOOR PLAN



GROUND FLOOR PLAN

— Flat Boundary  
 — Common Areas within Building

SCALE BAR



KEY  
 — Site Boundary  
 — Common Parking  
 — Common Access  
 — Right of Access  
 — Water Services  
 — Electrical Services

SCALE BAR



**smith design associates**

Dumfries Leatherhead Glasgow  
 30 Castle Street, Dumfries DG1 1DU 01387 250579  
 dumfries@smithdesign.co.uk www.smithdesign.co.uk  
 client Stratstone Investments Limited

project Mount St Michaels  
 Proposed Flats

drawing Development Plan original size A1

scale 1:250 (A3 @ 1:500) drawn JB/KH

date 18/01/2019 checked -

status INFORMATION passed -

job no.	drawing no.	revision
D2441	AL(0)050-3	-