

The Development registered under title MID142230 and 2 plots within Block A and 3 plots within Block B have been DPA approved by:
Craig McFadden - 22 February 2022
Craig McFadden (DPA Officer)

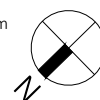
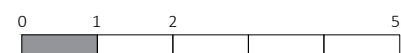


Hackland + Dore Architects
16 Annandale Street
Edinburgh EH7 4AN
t 0131 538 7707
e admin@hackland-dore.com
w www.hackland-dore.com

DO NOT SCALE. IF IN DOUBT, ASK

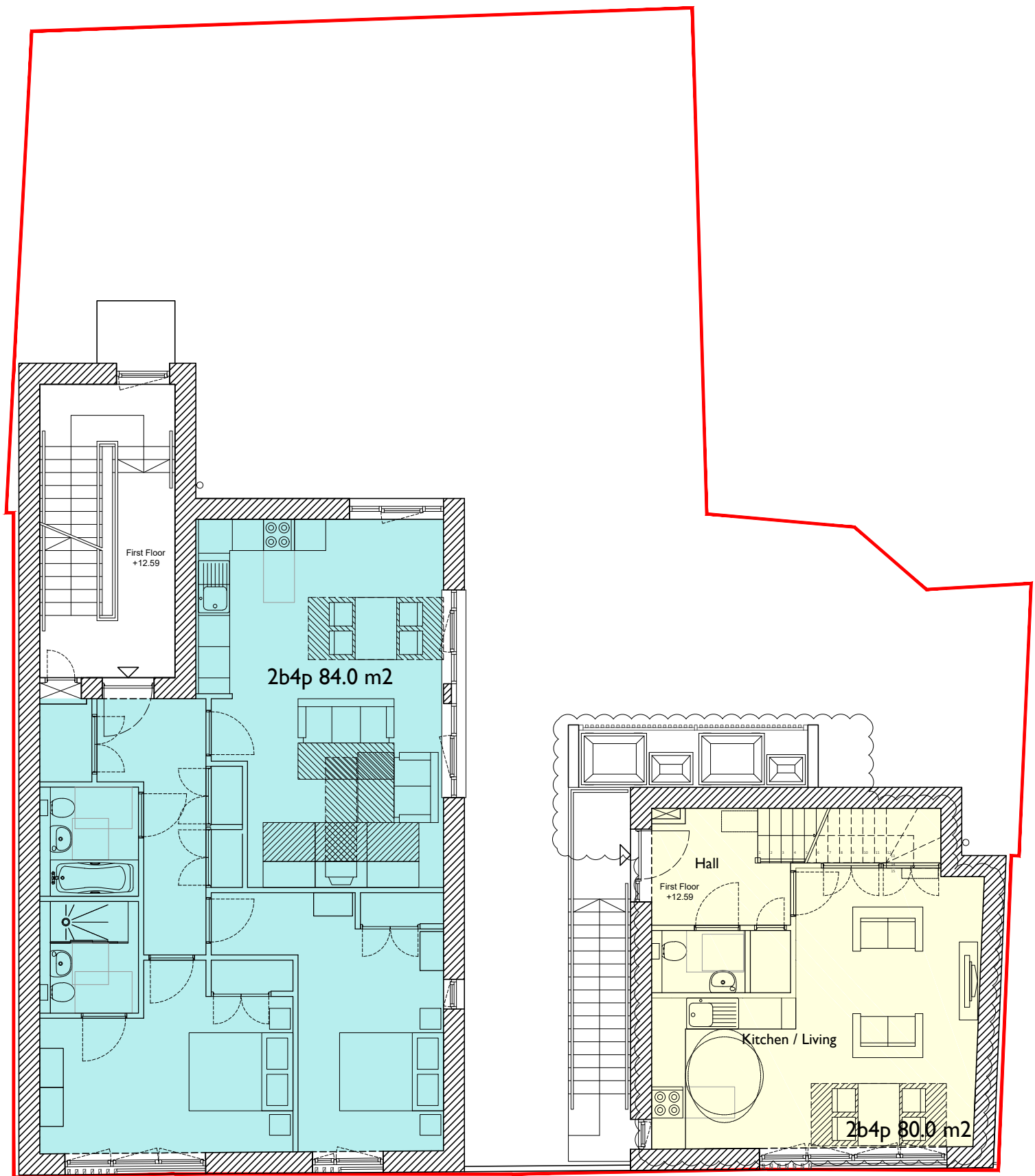
Electronic and printed copies of drawings are liable to distortion and inaccuracies. All dimensions in millimetres unless otherwise stated. This drawing to be read in conjunction with all relevant architectural, civil, structural and services engineer's drawings and specifications.

© This drawing is copyright and the property of Hackland + Dore Architects. It must not be reproduced or disclosed to a third party without written consent.



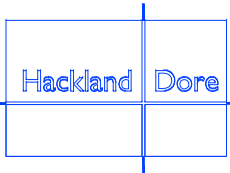
REV D AS 01.02.22 CROSS HATCH ADDED TO PLOT 1
REV C AS 26.01.22 PLOT 1 BELOW STAIR AMENDED FOR DEEDS OF CONDITIONS
REV B AS 26.01.22 AMENDED FOR DEEDS OF CONDITIONS
REV A AS 09.04.18 EXTERNAL STAIR FLIGHT AND TOP LANDING TO SOUTH-EAST ELEVATION REMOVED

Residential development Figgate Street, Portobello, Edinburgh	GA - GROUND FLOOR PLAN	Date 28-04-2017	Scale 1:100@A3	Drawn By AS	Chckd By MM
Carlsson Properties Ltd.	PLANNING	HD1019(PL)030		D	



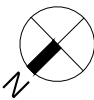
FIGGATE STREET

REV A AS 09.04.18 EXTERNAL STAIR FLIGHT AND TOP LANDING TO SOUTH-EAST ELEVATION REMOVED
INTERNAL LAYOUT AMENDED

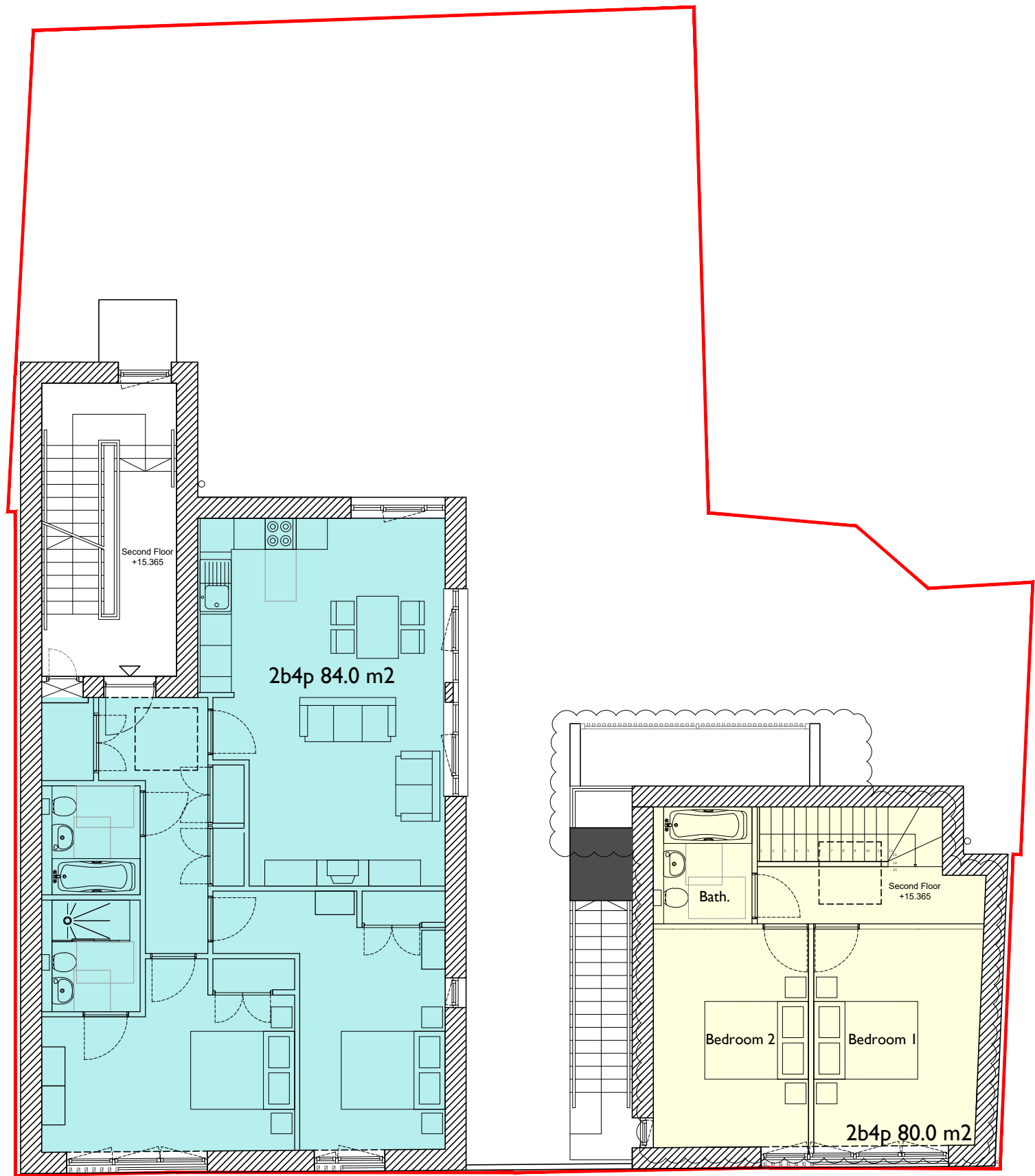


Hackland and Dore Architects
16 Annandale Street
Edinburgh EH7 4AN
t 0131 538 7707
e admin@hackland-dore.com
w www.hackland-dore.com

DO NOT SCALE. IF IN DOUBT, ASK
Electronic and printed copies of drawings are liable to distortion and inaccuracies. All dimensions in millimetres unless otherwise stated. This drawing to be read in conjunction with all relevant architectural, civil, structural and services engineer's drawings and specifications.
© This drawing is copyright and the property of Hackland + Dore Architects. It must not be reproduced or disclosed to a third party without written consent.



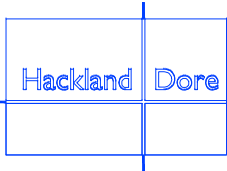
Residential Development Figgate Street, Portobello, Edinburgh	GA - FIRST FLOOR PLAN	Date 28-04-2017	Scale 1:100@A3	Drawn By AS	Chckd By MM
Figgate Street Developments Ltd	PLANNING	HD934 (PL)031		A	



FIGGATE STREET

REV A AS 09.04.18 EXTERNAL STAIR FLIGHT AND TOP LANDING, 2nd FLOOR ENTRANCE DOOR AND ASSOCIATED CANOPY TO SOUTH-EAST ELEVATION REMOVED
INTERNAL LAYOUT AMENDED
ROOFLIGHT ABOVE DUPLEX RELOCATED

Residential Development Figgate Street, Portobello, Edinburgh	GA - SECOND FLOOR PLAN	Date 28-04-2017	Scale 1:100@A3	Drawn By AS	Chckd By MM
Figgate Street Developments Ltd	PLANNING	HD934 (PL)032		A	



Hackland and Dore Architects
16 Annandale Street
Edinburgh EH7 4AN
t 0131 538 7707
e admin@hackland-dore.com
w www.hackland-dore.com

DO NOT SCALE. IF IN DOUBT, ASK

Electronic and printed copies of drawings are liable to distortion and inaccuracies. All dimensions in millimetres unless otherwise stated. This drawing to be read in conjunction with all relevant architectural, civil, structural and services engineer's drawings and specifications.
© This drawing is copyright and the property of Hackland + Dore Architects. It must not be reproduced or disclosed to a third party without written consent.



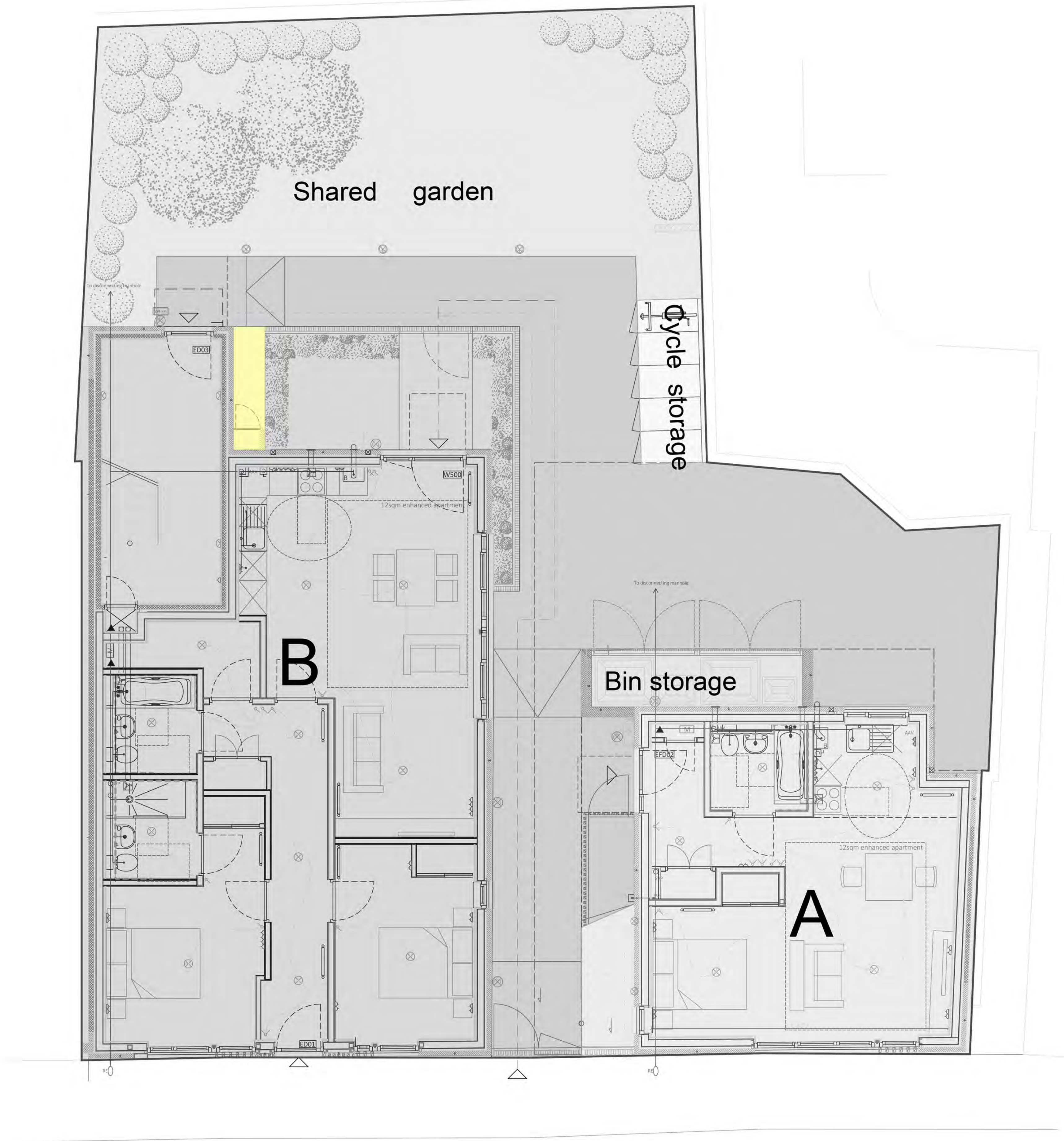


Hackland and Dore Architects
16 Annandale Street
Edinburgh EH7 4AN
t 0131 538 7707
e admin@hackland-dore.com
w www.hackland-dore.com

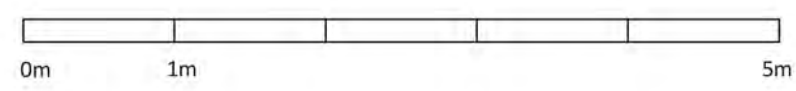
DO NOT SCALE. IF IN DOUBT, ASK
Electronic and printed copies of drawings are liable to distortion and inaccuracies. All dimensions in millimetres unless otherwise stated. This drawing to be read in conjunction with all relevant architectural, civil, structural and services engineer's drawings and specifications.
© This drawing is copyright and the property of Hackland + Dore Architects. It must not be reproduced or disclosed to a third party without written consent.



		Rev.B	AS	Drawing scale change	26.11.20
		Rev.A	AS	A and B area outlines amended	25.11.20
Residential development Figgate Street, Portobello, Edinburgh	GROUND FLOOR PLAN	Date	Scale	Drawn By	Chkd By
		25-11-2020	1:250@A3	AS	MM
Carlsson Properties Ltd.	DEEDS	HD1019(Deeds)030 B			



Figgate Street



Rev A AS A and B area outlines amended 25.11.20

Hackland

Dore

Hackland and Dore Architects
16 Annandale Street
Edinburgh EH7 4AN
t 0131 538 7707
e admin@hackland-dore.com
w www.hackland-dore.com

Residential development
Figgate Street, Portobello, Edinburgh
GA - GROUND FLOOR PLAN

Drawn checked
scale created

Deeds of Conditions
HD1019 (Deeds)030 A