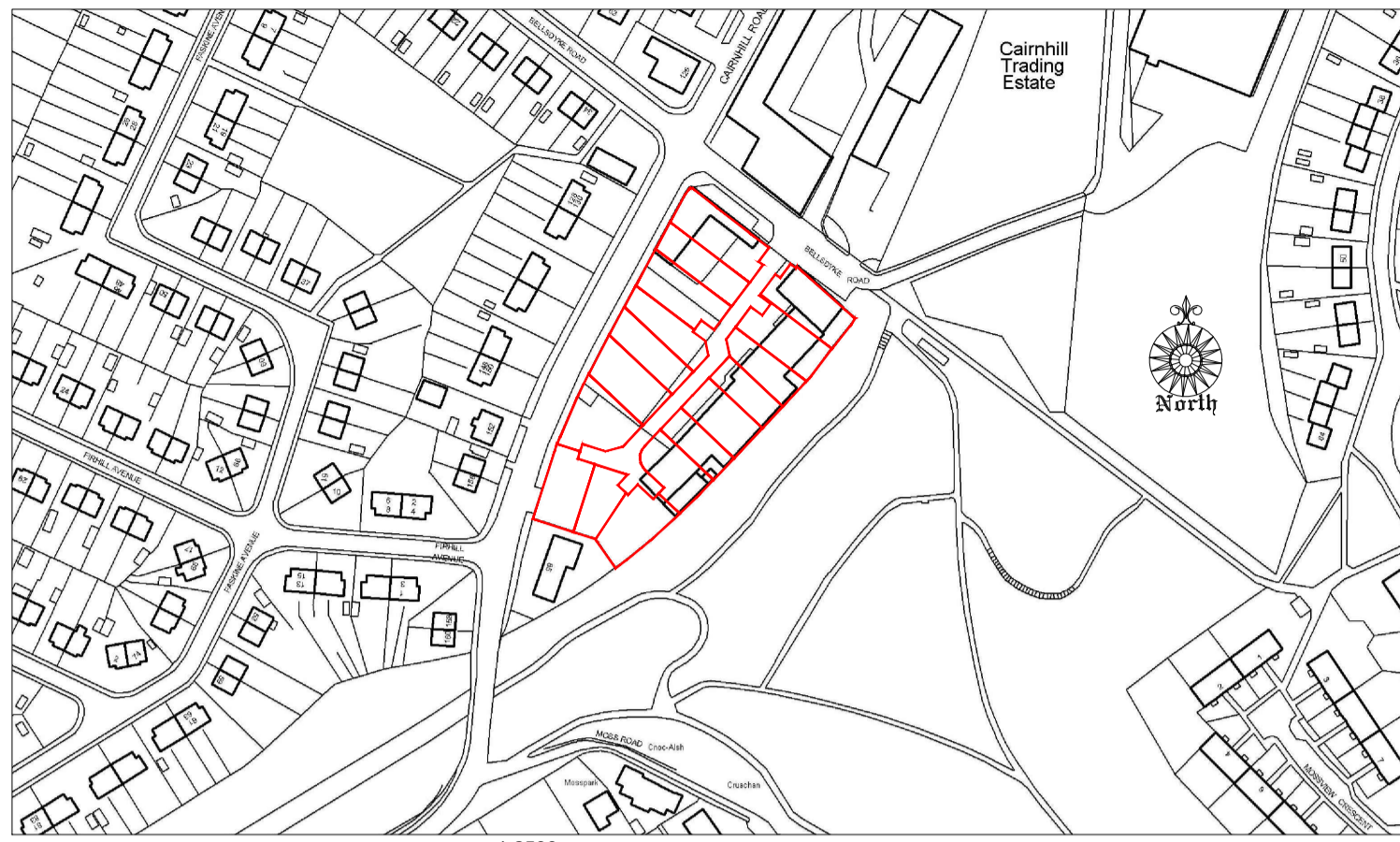
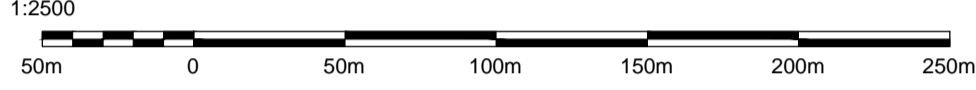


Plot 1 to 17, Cairnhill Road Site, Airdrie



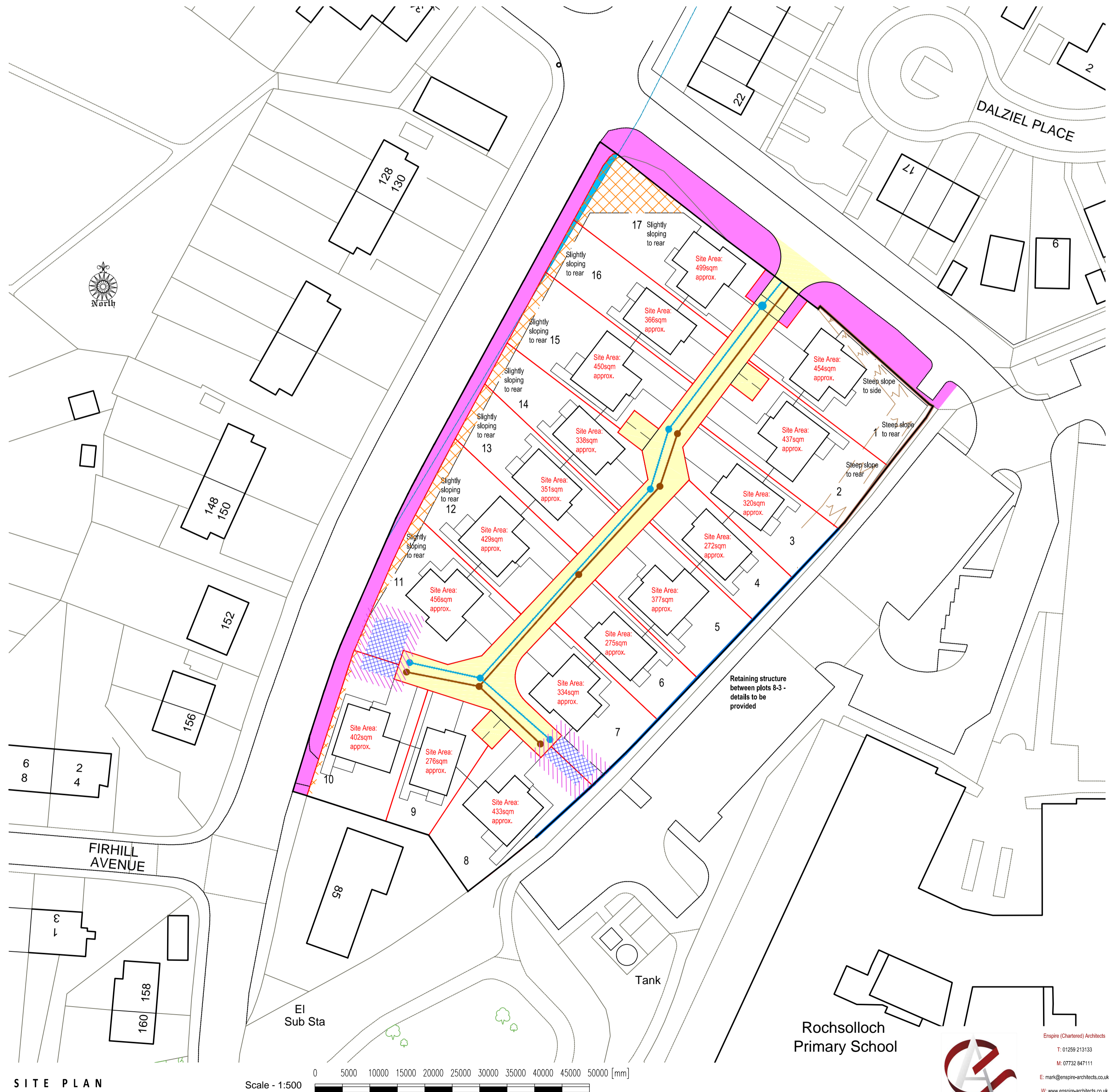
LOCATION PLAN 1:2500



The Development registered under title LAN112344 and plots 1 to 17 within have been DPA approved by:
Craig McFadden - 28 September 2022
 Craig McFadden (DPA Officer)

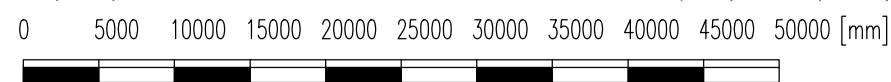
KEY

- CARRIAGEWAY (COUNCIL ADOPTED)
- FOOTWAY (COUNCIL ADOPTED)
- COMMON LANDSCAPE
- VISIBILITY (NO OBSTRUCTION OVER 1m)
- ATTENUATION TANK
- ATTENUATION TANK CLEAR AREA
- FACTOR AREA
- FOUL & STORM DRAINAGE LINES



SITE PLAN 1:500

Scale - 1:500



Rochsolloch Primary School



Enspire (Chartered) Architects
 T: 01259 213133
 M: 07732 847111
 E: mark@enspire-architects.co.uk
 W: www.enspire-architects.co.uk
 Office 32, Alcoa Business Ctr,
 Whins Rd, Alcoa FK10 3SA