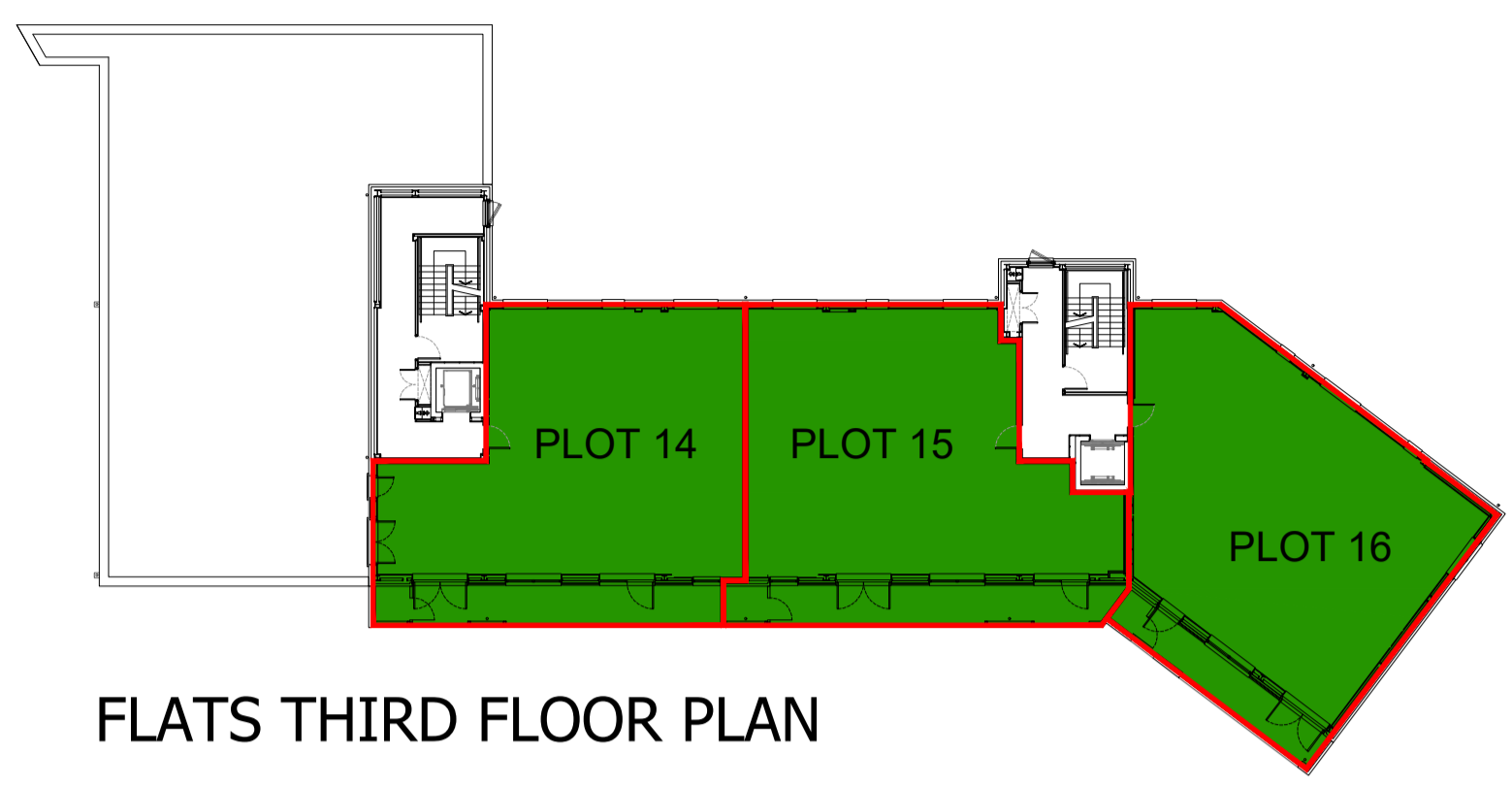


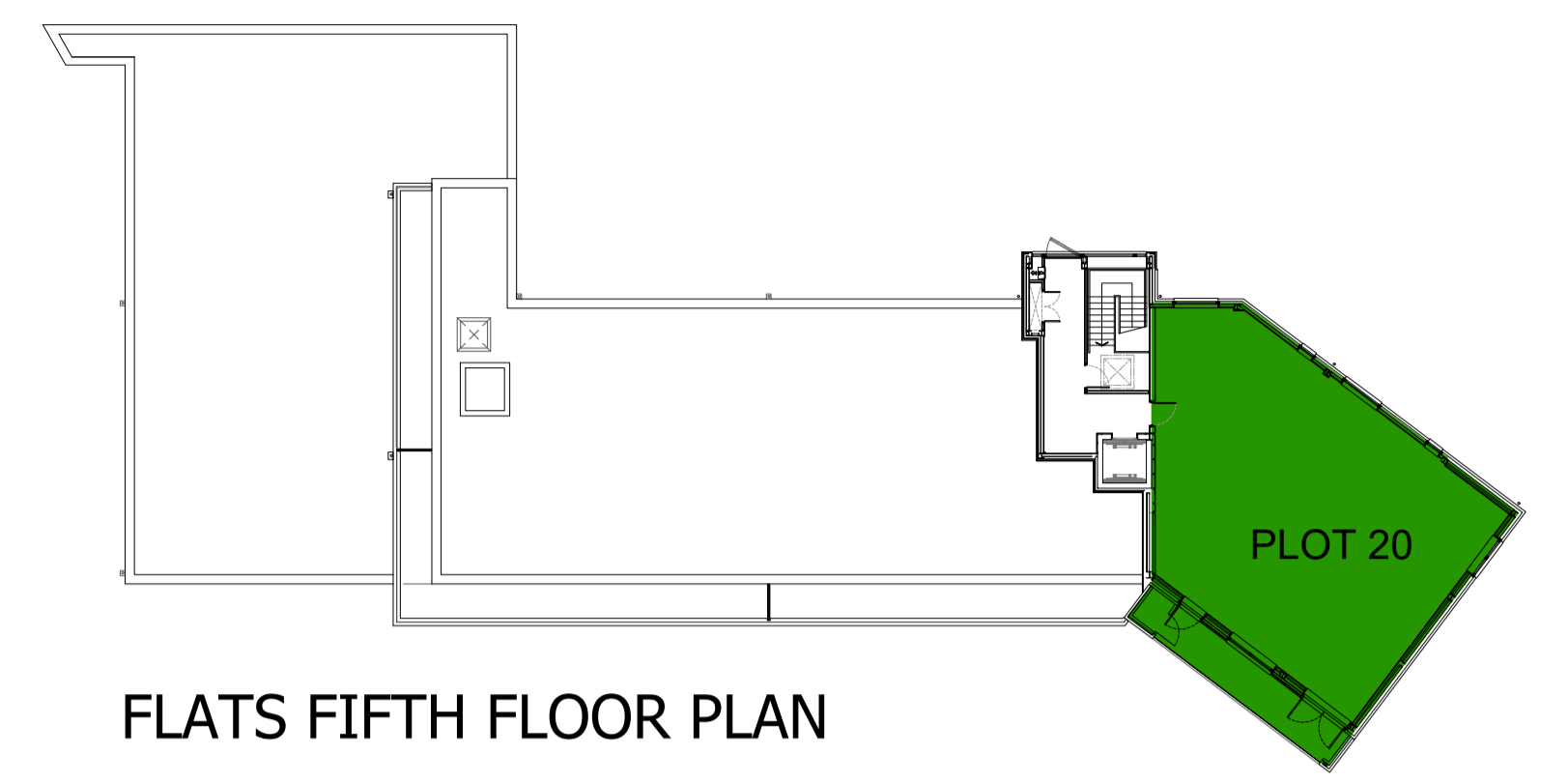


SITE LAYOUT PLAN
 SCALE 1:1000

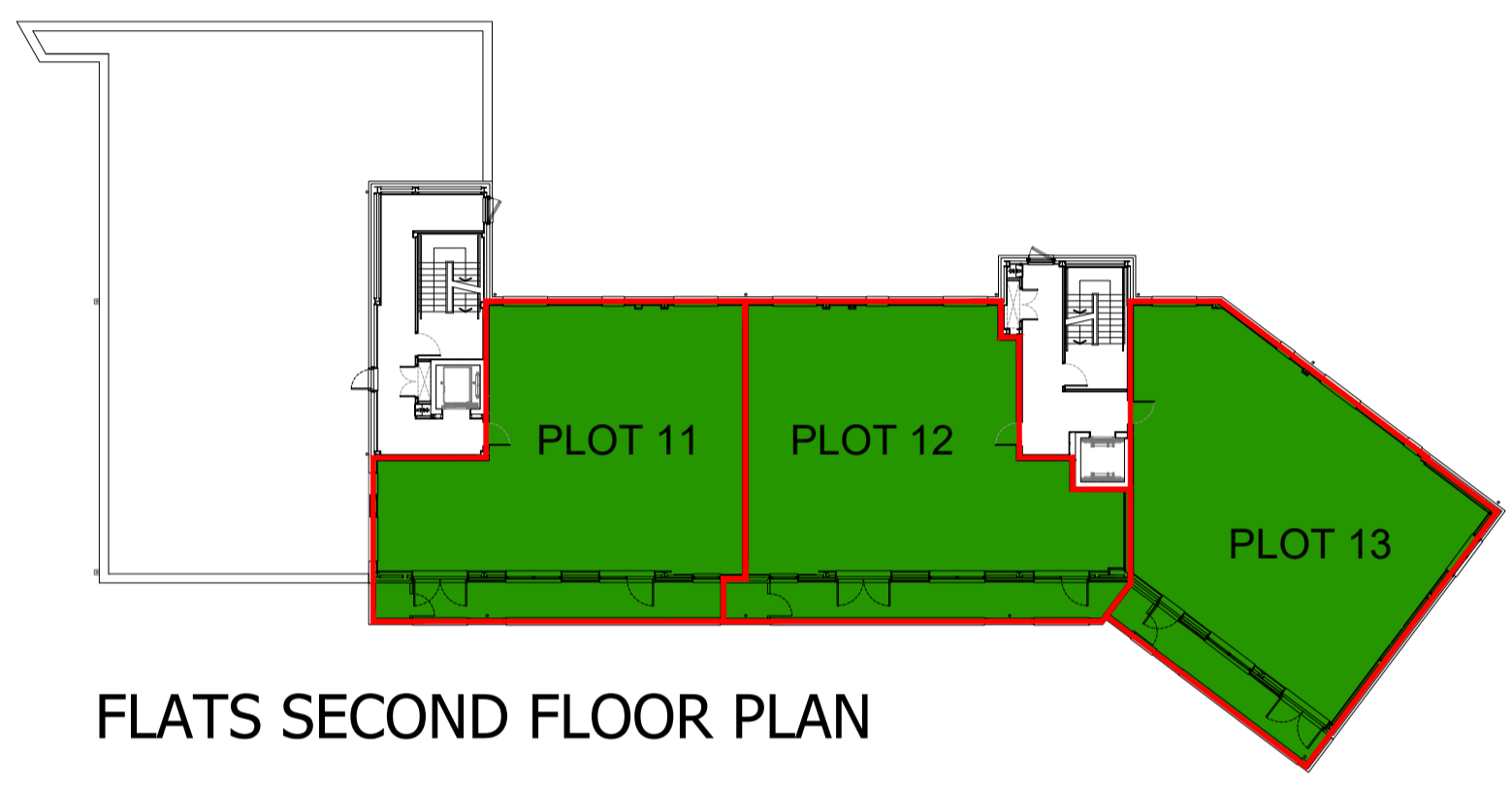
- LEGEND:**
- SITE BOUNDARY
 - OPEN SPACE
 - ROADS
 - PATHWAYS
 - PRIVATE PARKING
 - STORE
 - PRIVATE PROPERTY



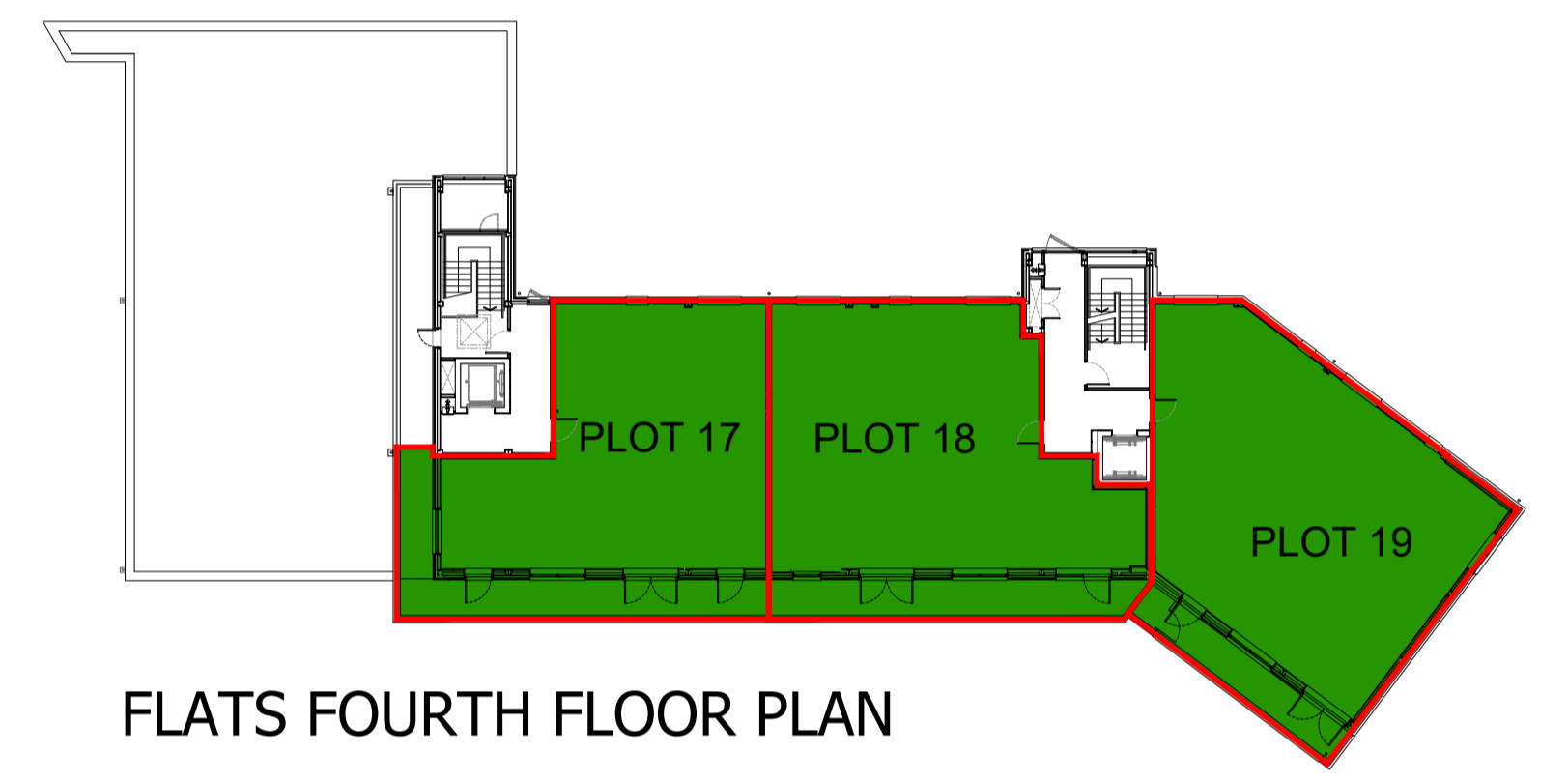
FLATS THIRD FLOOR PLAN



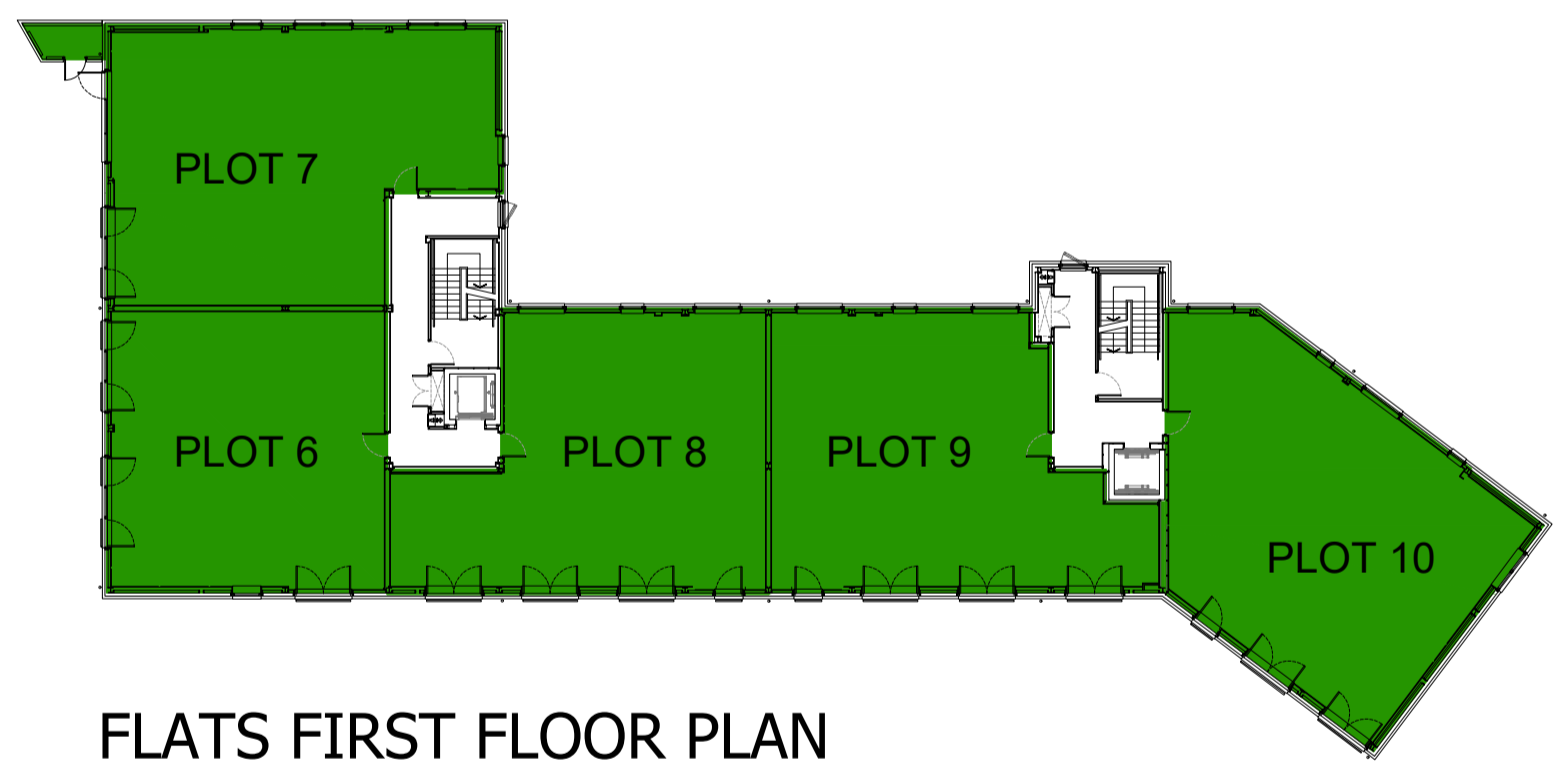
FLATS FIFTH FLOOR PLAN



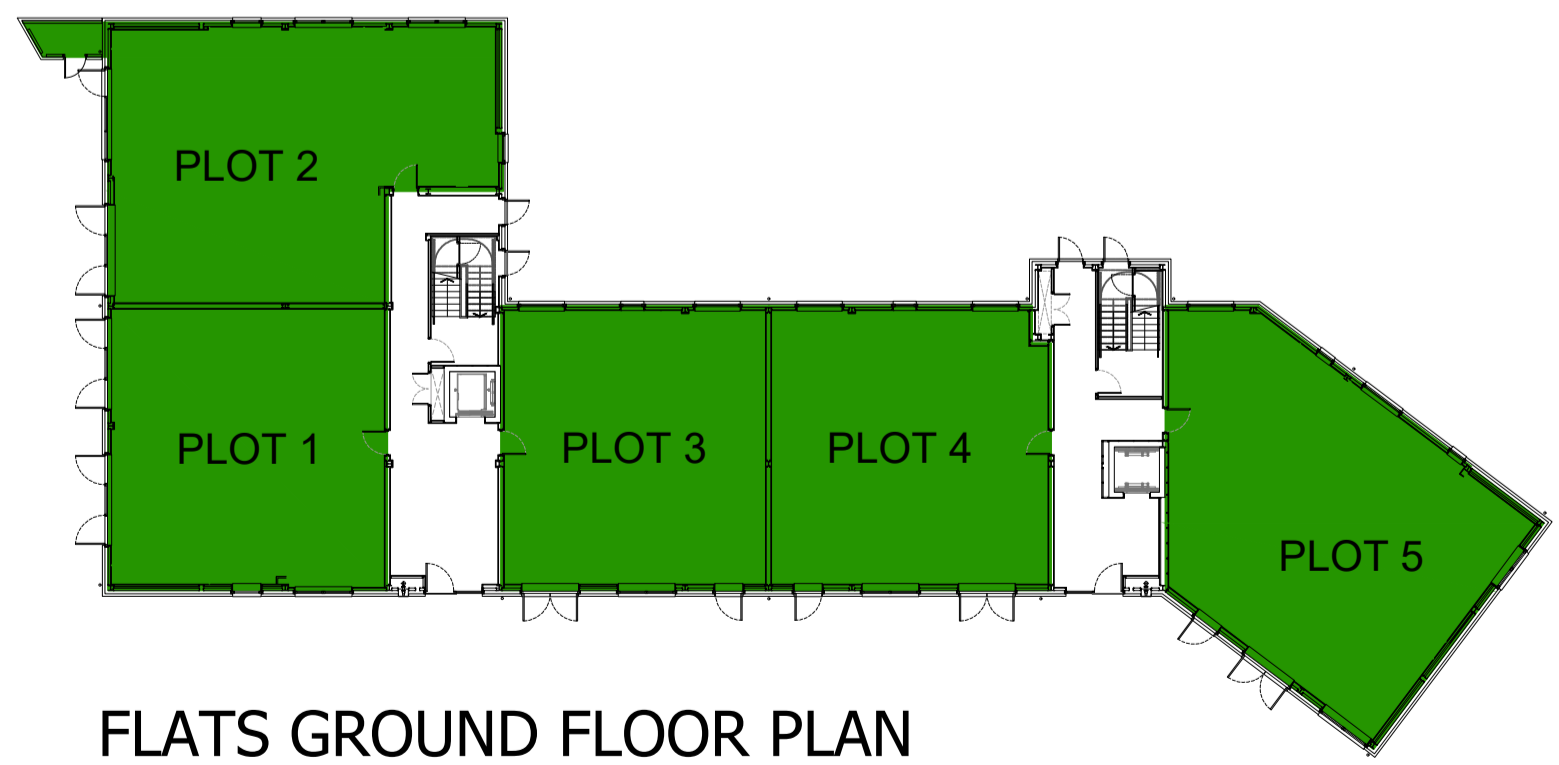
FLATS SECOND FLOOR PLAN



FLATS FOURTH FLOOR PLAN



FLATS FIRST FLOOR PLAN




FLATS GROUND FLOOR PLAN

- K Plot boundaries shown. 04.07.2018
- J Balconies coloured. 04.07.2018
- H Building line updated. 22.05.2018
- G Building line updated. 11.05.2018
- F Private garden boundaries added. 08.05.2018
- E Private garden hatch updated. 01.05.2018
- D Shading updated. 20.04.2018
- C Blue boundary removed. 18.04.2018
- B Boundaries amended in line with ROS plan. 09.04.2018
- A Site layout plan updated. 15.01.2018

The development registered under title REN10825 and plots 1 to 20 within have been DPA approved by:

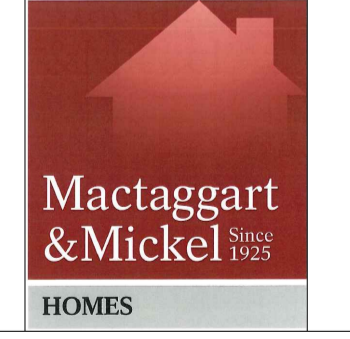
S Pardue - 5th July 2018

Stuart Pardue (DPA Officer)



fouin + bell
architects

1 John's Place Edinburgh EH6 7EL
 T: 0131 478 7100 F: 0131 478 7111
 mail@fouin-bell.com www.fouin-bell.com



Mactaggart & Mickel
HOMES

PROJECT		
RESIDENTIAL DEVELOPMENT MILVERTON		
-		
SCALE	DATE	
AS NOTED	10.01.2018	
DRAWN BY	CHECKED	STAGE
BRL	IH	DPA
DRAWING		
DEVELOPMENT PLAN APPROVAL		
-		
PROJECT NUMBER	DRAWING NUMBER	REVISION
15-451	DPA 01	K