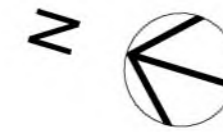




key plan Scale 1:2000

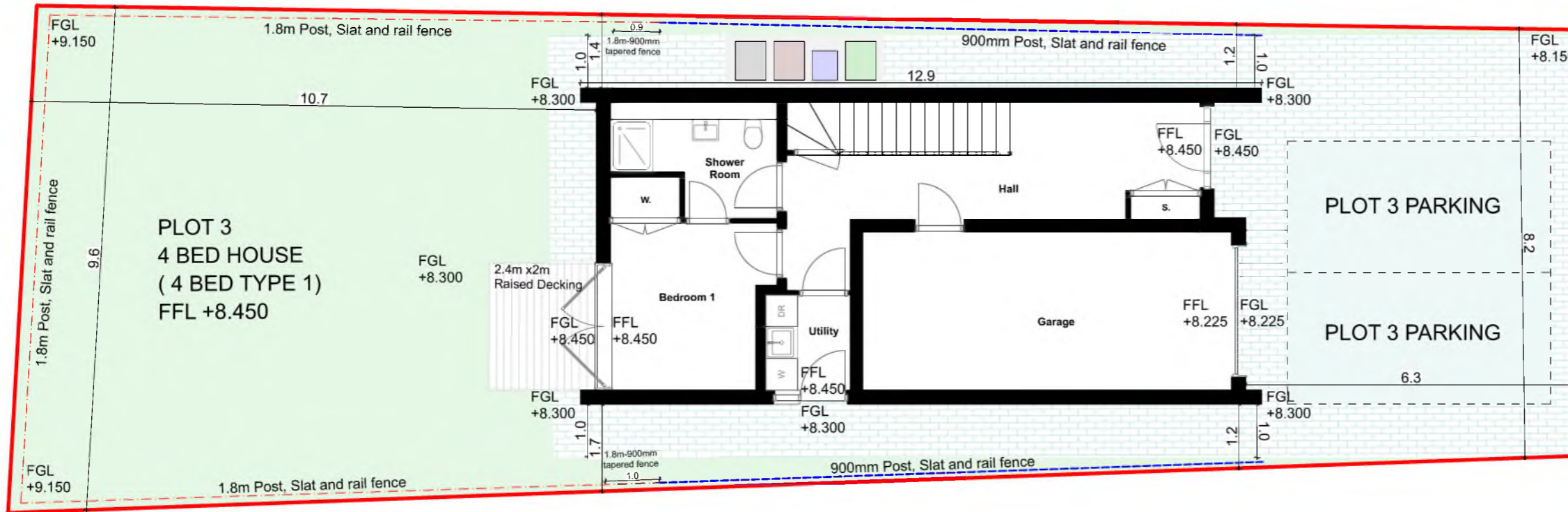
- SITE BOUNDARY
- - - 1800 mm POST/SLAT & RAIL FENCE
- - - 900mm POST/SLAT & RAIL FENCE
- GRASS
- BLOCK PAVING
- PARKING SPACE
- VISITOR PARKING
- WASTE & RECYCLING PROVISION
- RAISED DECKING
- PROPOSED NEW TREE PLANTING

ALL DIMENSIONS ARE INDICATIVE
TBC ON SITE



ALL DIMENSIONS TO BE CONFIRMED ON SITE PRIOR TO CONSTRUCTION

The development registered under title FFE7935 and plots 3 to 20 and flats A 0/1 to B 2/2 within have been DPA approved by:
D MacDonald - 04/08/2022
David MacDonald (DPA Officer)



0.

PLOT 3

1:100

DATE	INITIAL	REVISION	SUFFIX



CLIENT
SIPS Homes Scotland Ltd

PROJECT
Collinswell Park, Burntisland,
Fife. KY3 0EN

TITLE
PLOT 3
FOR COMMENT

SCALE @ A3	START DATE	DRAWN	CHECKED
	JUNE 2019	JM	DJM

No. 314 - PP
REV.

LEWIS HOUSE, UNIT 213, EAST WAY
HILLEND IND EST, DUNFERMLINE
FIFE, KY11 9JF, SCOTLAND

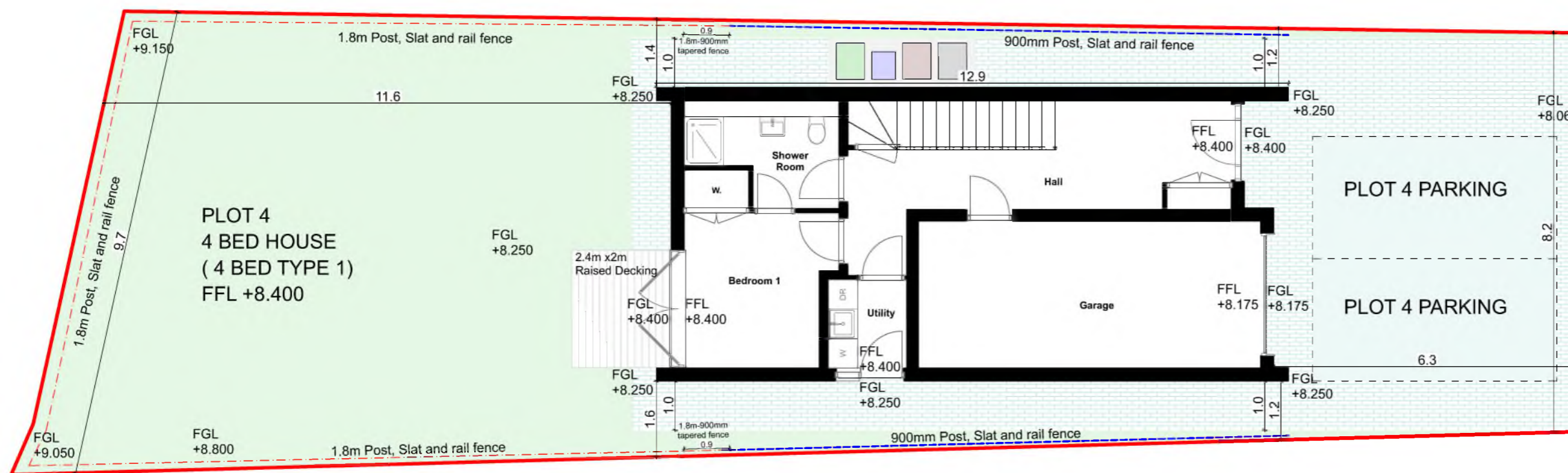
t - 01383 737101
e - info@acarchitects.biz
w - www.acarchitects.biz



key plan Scale 1:2000

- SITE BOUNDARY
- - - 1800 mm POST/SLAT & RAIL FENCE
- - - 900mm POST/SLAT & RAIL FENCE
- GRASS
- BLOCK PAVING
- PARKING SPACE
- VISITOR PARKING
- WASTE & RECYCLING PROVISION
- RAISED DECKING
- PROPOSED NEW TREE PLANTING

ALL DIMENSIONS ARE INDICATIVE
TBC ON SITE



0.

PLOT 4

1:100

ALL DIMENSIONS TO BE CONFIRMED ON SITE PRIOR TO CONSTRUCTION

DATE	INITIAL	REVISION	SUFFIX



CLIENT
SIPS Homes Scotland Ltd

PROJECT
Collinswell Park, Burntisland,
Fife. KY3 0EN

TITLE
PLOT 4
FOR COMMENT

SCALE @ A3	START DATE	DRAWN	CHECKED
	JUNE 2019	JM	DJM

No. 314 - PP

REV.
LEWIS HOUSE, UNIT 213, EAST WAY
HILLEND IND EST, DUNFERMLINE
FIFE, KY11 9JF, SCOTLAND

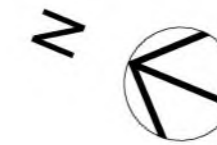
t - 01383 737101
e - info@acarchitects.biz
w - www.acarchitects.biz



key plan Scale 1:2000

- SITE BOUNDARY
- - - 1800 mm POST/SLAT & RAIL FENCE
- - - 900mm POST/SLAT & RAIL FENCE
- GRASS
- BLOCK PAVING
- PARKING SPACE
- VISITOR PARKING
- WASTE & RECYCLING PROVISION
- RAISED DECKING
- PROPOSED NEW TREE PLANTING

ALL DIMENSIONS ARE INDICATIVE
TBC ON SITE



ALL DIMENSIONS TO BE CONFIRMED ON
SITE PRIOR TO CONSTRUCTION

DATE	INITIAL	REVISION	SUFFIX



CLIENT
SIPS Homes Scotland Ltd

PROJECT
Collinswell Park, Burntisland,
Fife. KY3 0EN

TITLE
PLOT 5

FOR COMMENT

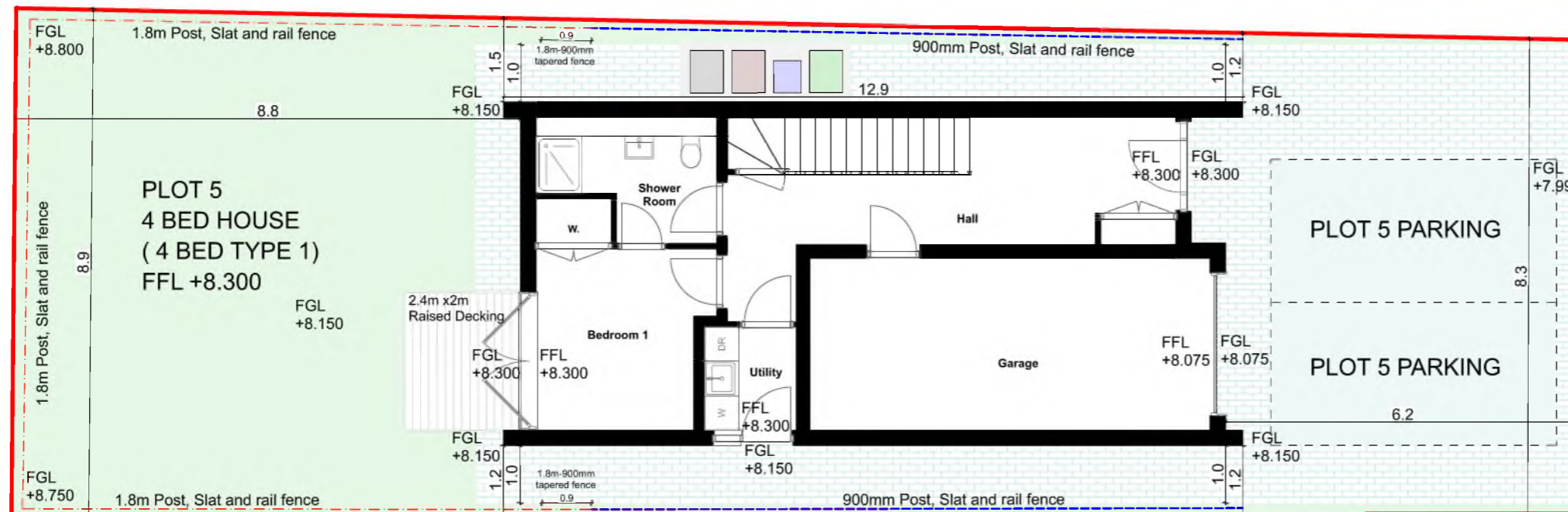
SCALE @ A3	START DATE	DRAWN	CHECKED
	JUNE 2019	JM	DJM

No. 314 - PP

REV. _____

LEWIS HOUSE, UNIT 213, EAST WAY
HILLEND IND EST, DUNFERMLINE
FIFE, KY11 9JF, SCOTLAND

t - 01383 737101
e - info@acarchitects.biz
w - www.acarchitects.biz



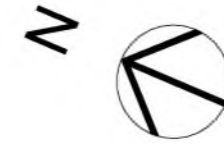
0. PLOT 5 1:100



key plan Scale 1:2000

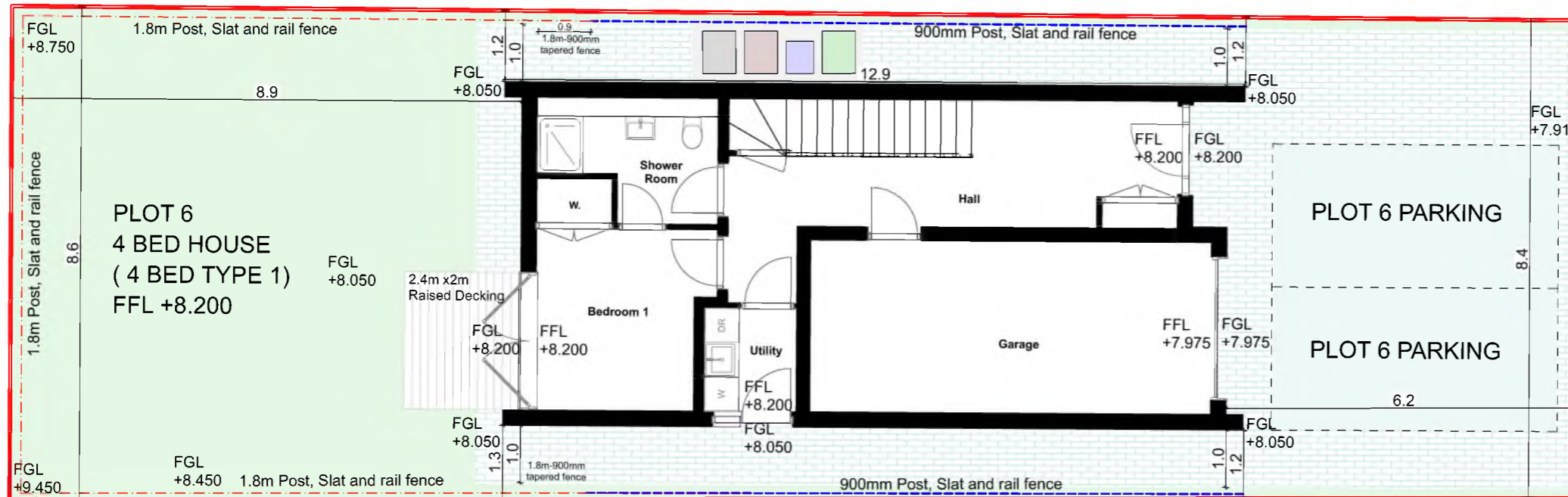
- SITE BOUNDARY
- - - 1800 mm POST/SLAT & RAIL FENCE
- - - 900mm POST/SLAT & RAIL FENCE
- GRASS
- BLOCK PAVING
- PARKING SPACE
- VISITOR PARKING
- WASTE & RECYCLING PROVISION
- RAISED DECKING
- PROPOSED NEW TREE PLANTING

ALL DIMENSIONS ARE INDICATIVE
TBC ON SITE



ALL DIMENSIONS TO BE CONFIRMED ON
SITE PRIOR TO CONSTRUCTION

DATE	INITIAL	REVISION	SUFFIX



0. PLOT 6 1:100



CLIENT
SIPS Homes Scotland Ltd

PROJECT
Collinswell Park, Burntisland,
Fife. KY3 0EN

TITLE
PLOT 6
FOR COMMENT

SCALE @ A3	START DATE	DRAWN	CHECKED
	JUNE 2019	JM	DJM

No. 314 - PP

REV. _____

LEWIS HOUSE, UNIT 213, EAST WAY
HILLEND IND EST, DUNFERMLINE
FIFE, KY11 9JF, SCOTLAND

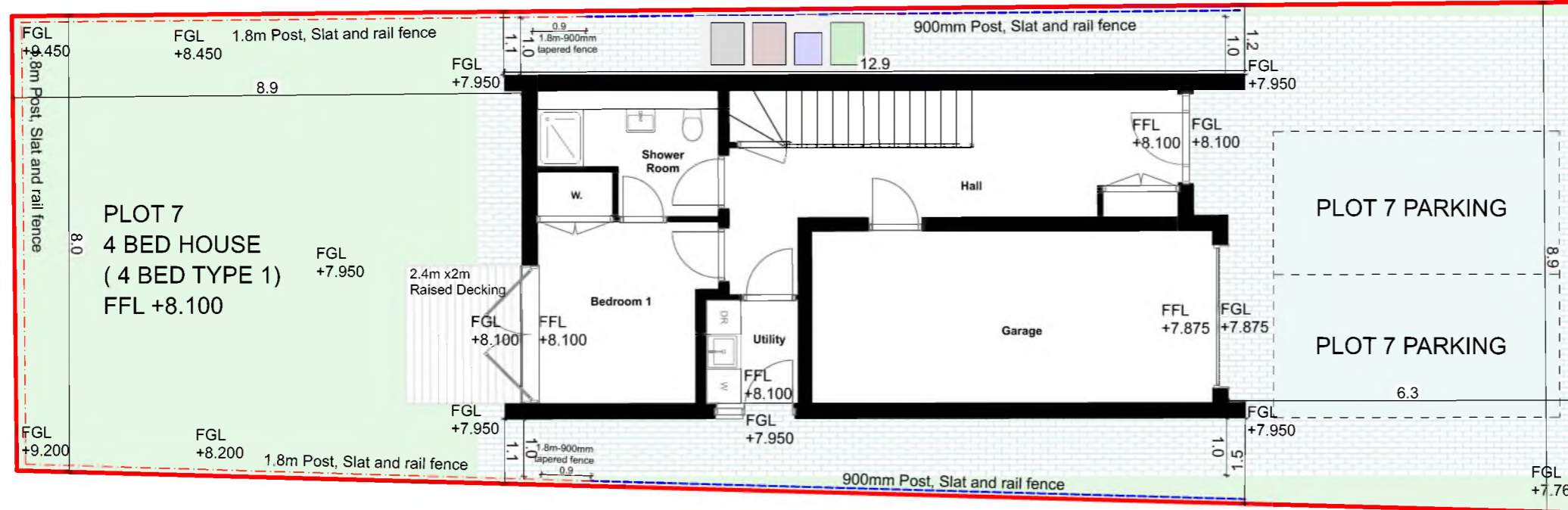
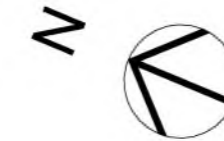
t - 01383 737101
e - info@acarchitects.biz
w - www.acarchitects.biz



key plan Scale 1:2000

- SITE BOUNDARY
- - - 1800 mm POST/SLAT & RAIL FENCE
- - - 900mm POST/SLAT & RAIL FENCE
- GRASS
- BLOCK PAVING
- PARKING SPACE
- VISITOR PARKING
- WASTE & RECYCLING PROVISION
- RAISED DECKING
- PROPOSED NEW TREE PLANTING

ALL DIMENSIONS ARE INDICATIVE
TBC ON SITE



0.

PLOT 7

1:100

ALL DIMENSIONS TO BE CONFIRMED ON SITE PRIOR TO CONSTRUCTION

DATE	INITIAL	REVISION	SUFFIX



CLIENT
SIPS Homes Scotland Ltd

PROJECT
Collinswell Park, Burntisland,
Fife. KY3 0EN

TITLE
PLOT 7
FOR COMMENT

SCALE @ A3	START DATE	DRAWN	CHECKED
	JUNE 2019	JM	DJM

No. 314 - PP
REV.

LEWIS HOUSE, UNIT 213, EAST WAY
HILLEND IND EST, DUNFERMLINE
FIFE, KY11 9JF, SCOTLAND

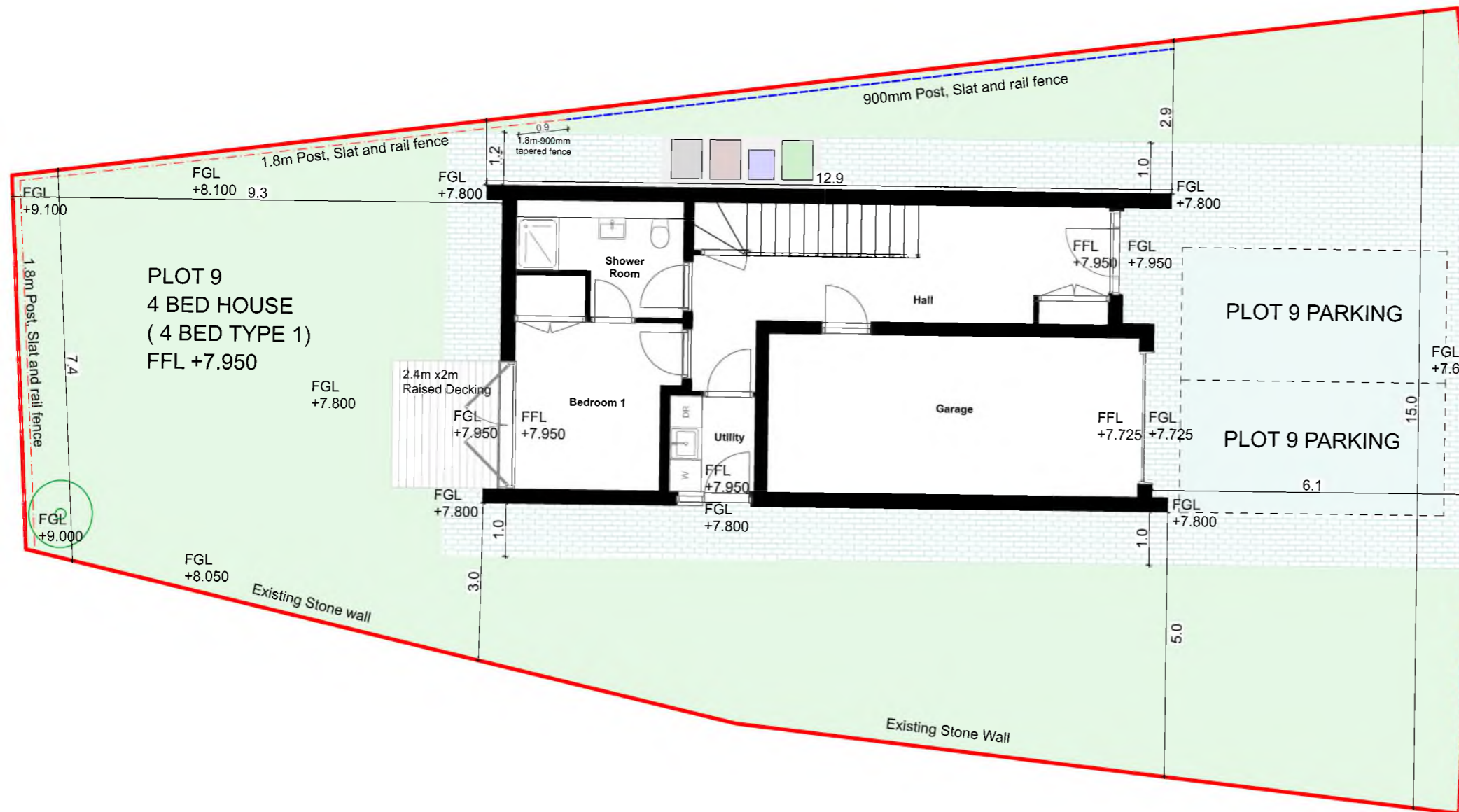
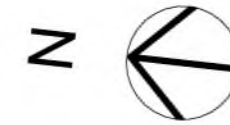
t - 01383 737101
e - info@acarchitects.biz
w - www.acarchitects.biz



key plan Scale 1:2000

- SITE BOUNDARY
- - - 1800 mm POST/SLAT & RAIL FENCE
- - - 900mm POST/SLAT & RAIL FENCE
- GRASS
- BLOCK PAVING
- PARKING SPACE
- VISITOR PARKING
- WASTE & RECYCLING PROVISION
- RAISED DECKING
- PROPOSED NEW TREE PLANTING

ALL DIMENSIONS ARE INDICATIVE
TBC ON SITE



0. PLOT 9 1:100

ALL DIMENSIONS TO BE CONFIRMED ON SITE PRIOR TO CONSTRUCTION

DATE	INITIAL	REVISION	SUFFIX



CLIENT
SIPS Homes Scotland Ltd

PROJECT
Collinswell Park, Burntisland,
Fife. KY3 0EN

TITLE
PLOT 9
FOR COMMENT

SCALE @ A3	START DATE	DRAWN	CHECKED
	JUNE 2019	JM	DJM

No. 314 - PP
REV.

LEWIS HOUSE, UNIT 213, EAST WAY
HILLENDD IND EST, DUNFERMLINE
FIFE, KY11 9JF, SCOTLAND

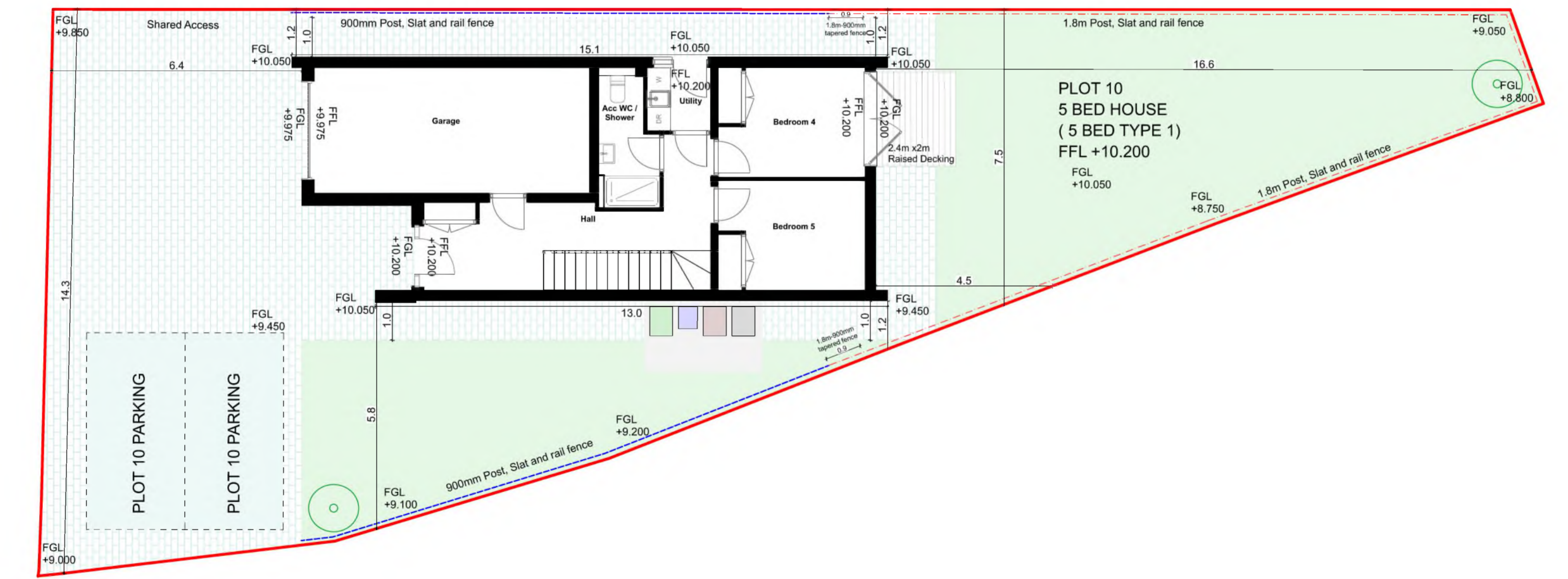
t - 01383 737101
e - info@acarchitects.biz
w - www.acarchitects.biz



key plan Scale 1:2000

- SITE BOUNDARY
- - - 1800 mm POST/SLAT & RAIL FENCE
- - - 900mm POST/SLAT & RAIL FENCE
- GRASS
- BLOCK PAVING
- PARKING SPACE
- VISITOR PARKING
- WASTE & RECYCLING PROVISION
- RAISED DECKING
- PROPOSED NEW TREE PLANTING

ALL DIMENSIONS ARE INDICATIVE
TBC ON SITE



0. PLOT 10 1:100

ALL DIMENSIONS TO BE CONFIRMED ON SITE PRIOR TO CONSTRUCTION

DATE	INITIAL	REVISION	SUFFIX



CLIENT
SIPS Homes Scotland Ltd

PROJECT
Collinswell Park, Burntisland,
Fife. KY3 0EN

TITLE
PLOT 10
FOR COMMENT

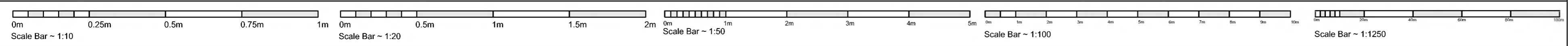
SCALE @ A2	PRINTED DATE	DRAWN	CHECKED
	JUNE 2019	JM	DJM

No. 314 - PP
REV.

LEWIS HOUSE, UNIT 213, EAST WAY
HILLEND IND EST, DUNFERMLINE
FIFE, KY11 9JF, SCOTLAND

t - 01383 737101
e - info@acarchitects.biz
w - www.acarchitects.biz

REPRODUCTION OF THESE DRAWINGS BY COPYING OR PRINTING IS CARRIED OUT AT YOUR OWN RISK, PLEASE REFER TO ASSOCIATED SCALE BAR. DO NOT SCALE FROM THESE DRAWINGS FOR CONSTRUCTION PURPOSES. ANY DISCREPANCIES SHOULD BE IMMEDIATELY RAISED WITH AC ARCHITECTS

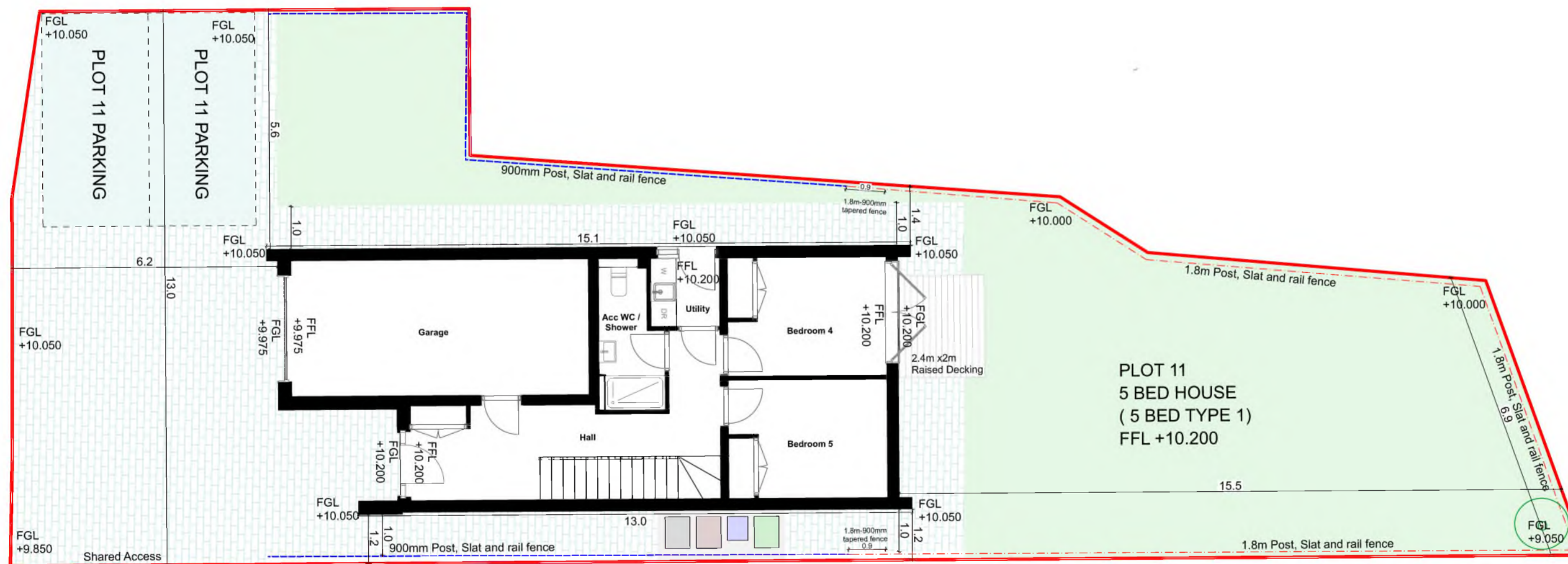




key plan Scale 1:2000

- SITE BOUNDARY
- - - 1800 mm POST/SLAT & RAIL FENCE
- - - 900mm POST/SLAT & RAIL FENCE
- GRASS
- BLOCK PAVING
- PARKING SPACE
- VISITOR PARKING
- WASTE & RECYCLING PROVISION
- RAISED DECKING
- PROPOSED NEW TREE PLANTING

ALL DIMENSIONS ARE INDICATIVE
TBC ON SITE



0.

PLOT 11

1:100

ALL DIMENSIONS TO BE CONFIRMED ON SITE PRIOR TO CONSTRUCTION

DATE	INITIAL	REVISION	SUFFIX



CLIENT
SIPS Homes Scotland Ltd

PROJECT
Collinswell Park, Burntisland,
Fife. KY3 0EN

TITLE
PLOT 11
FOR COMMENT

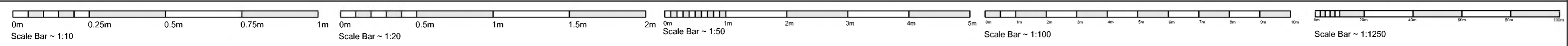
SCALE @ A2	PRINTED DATE	DRAWN	CHECKED
	JUNE 2019	JM	DJM

No. 314 - PP
REV.

LEWIS HOUSE, UNIT 213, EAST WAY
HILLEND IND EST, DUNFERMLINE
FIFE, KY11 9JF, SCOTLAND

t - 01383 737101
e - info@acarchitects.biz
w - www.acarchitects.biz

REPRODUCTION OF THESE DRAWINGS BY COPYING OR PRINTING IS CARRIED OUT AT YOUR OWN RISK, PLEASE REFER TO ASSOCIATED SCALE BAR. DO NOT SCALE FROM THESE DRAWINGS FOR CONSTRUCTION PURPOSES. ANY DISCREPANCIES SHOULD BE IMMEDIATELY RAISED WITH AC ARCHITECTS

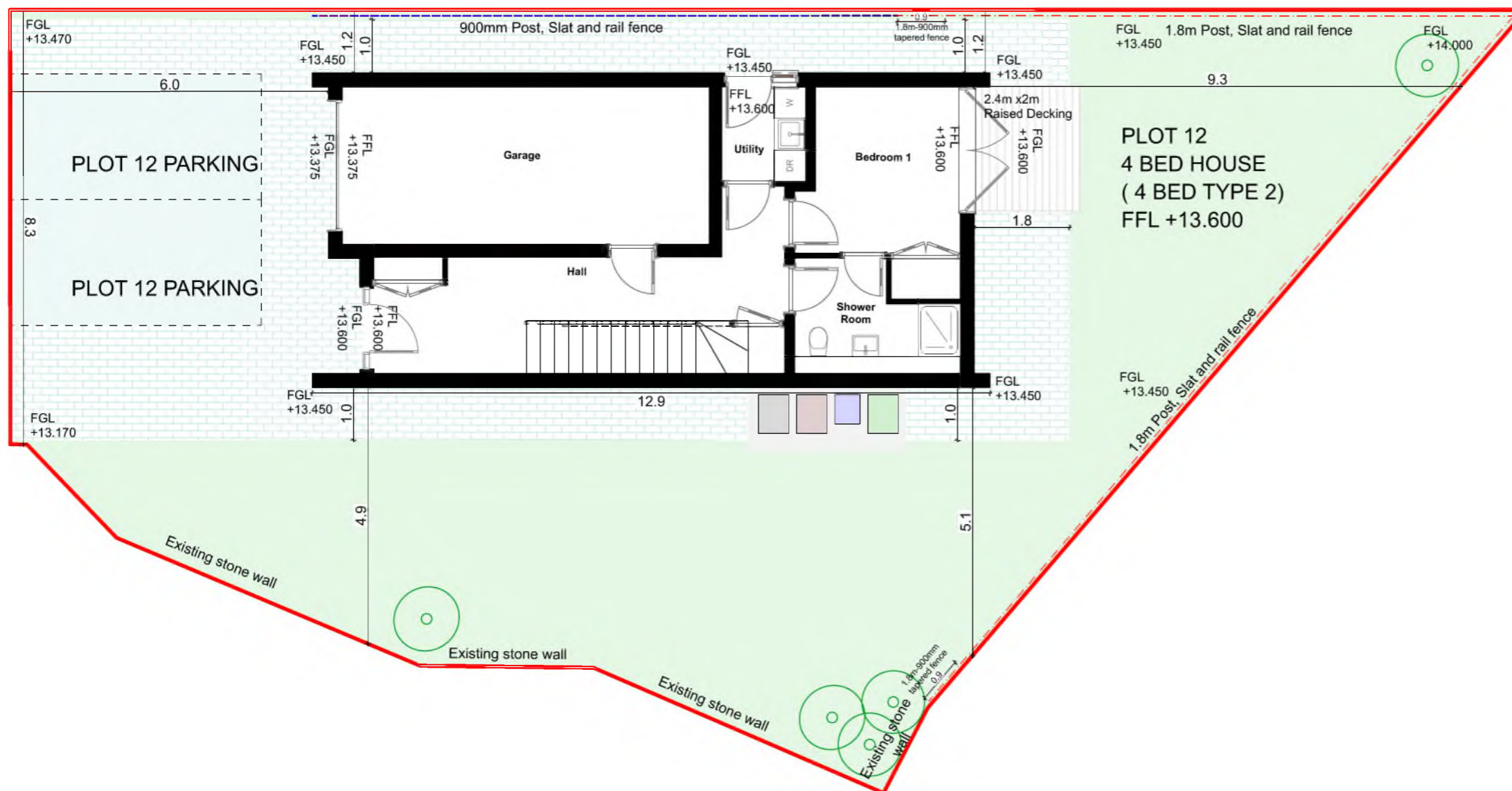
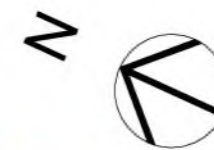




key plan Scale 1:2000

- SITE BOUNDARY
- - - 1800 mm POST/SLAT & RAIL FENCE
- - - 900mm POST/SLAT & RAIL FENCE
- GRASS
- BLOCK PAVING
- PARKING SPACE
- VISITOR PARKING
- WASTE & RECYCLING PROVISION
- RAISED DECKING
- PROPOSED NEW TREE PLANTING

ALL DIMENSIONS ARE INDICATIVE
TBC ON SITE



0.

PLOT 12

1:100

ALL DIMENSIONS TO BE CONFIRMED ON SITE PRIOR TO CONSTRUCTION

DATE	INITIAL	REVISION	SUFFIX



CLIENT
SIPS Homes Scotland Ltd

PROJECT
Collinswell Park, Burntisland,
Fife. KY3 0EN

TITLE
PLOT 12

FOR COMMENT

SCALE @ A3	START DATE	DRAWN	CHECKED
	JUNE 2019	JM	DJM

No. 314 - PP
REV.

LEWIS HOUSE, UNIT 213, EAST WAY
HILLENDD IND EST, DUNFERMLINE
FIFE, KY11 9JF, SCOTLAND

t - 01383 737101
e - info@acarchitects.biz
w - www.acarchitects.biz



key plan Scale 1:2000

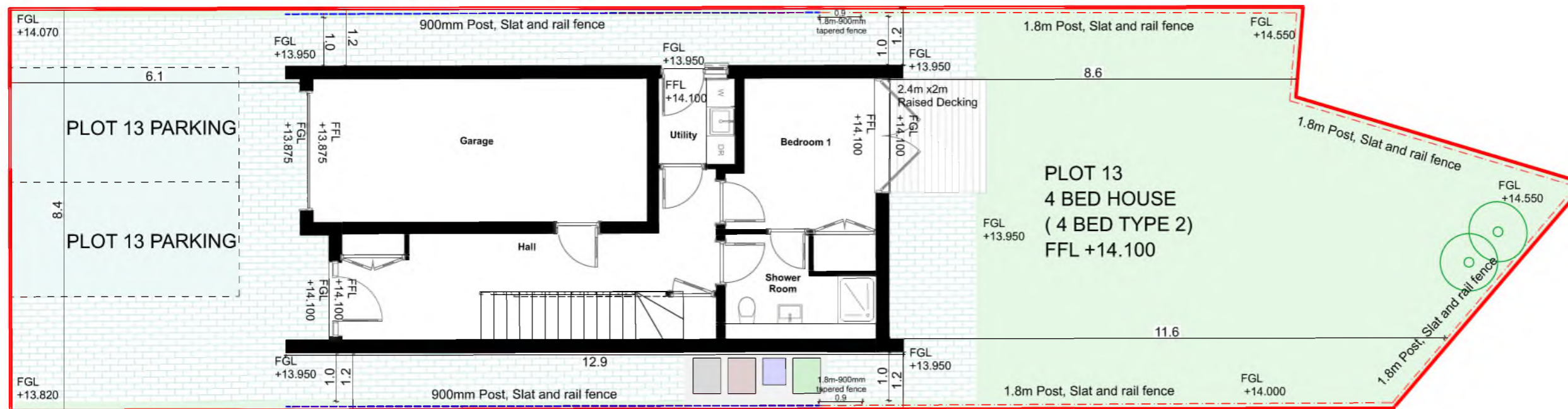
- SITE BOUNDARY
- - - 1800 mm POST/SLAT & RAIL FENCE
- - - 900mm POST/SLAT & RAIL FENCE
- GRASS
- BLOCK PAVING
- PARKING SPACE
- VISITOR PARKING
- WASTE & RECYCLING PROVISION
- RAISED DECKING
- PROPOSED NEW TREE PLANTING

ALL DIMENSIONS ARE INDICATIVE
TBC ON SITE



ALL DIMENSIONS TO BE CONFIRMED ON SITE PRIOR TO CONSTRUCTION

DATE	INITIAL	REVISION	SUFFIX



0.

PLOT 13

1:100



CLIENT
SIPS Homes Scotland Ltd

PROJECT
Collinswell Park, Burntisland, Fife. KY3 0EN

TITLE
PLOT 13
FOR COMMENT

SCALE @ A3	START DATE	DRAWN	CHECKED
	JUNE 2019	JM	DJM

No. 314 - PP

REV.
LEWIS HOUSE, UNIT 213, EAST WAY
HILLEND IND EST, DUNFERMLINE
FIFE, KY11 9JF, SCOTLAND

t - 01383 737101
e - info@acarchitects.biz
w - www.acarchitects.biz



key plan Scale 1:2000

- SITE BOUNDARY
- - - 1800 mm POST/SLAT & RAIL FENCE
- - - 900mm POST/SLAT & RAIL FENCE
- GRASS
- BLOCK PAVING
- PARKING SPACE
- VISITOR PARKING
- WASTE & RECYCLING PROVISION
- RAISED DECKING
- PROPOSED NEW TREE PLANTING

ALL DIMENSIONS ARE INDICATIVE
TBC ON SITE



ALL DIMENSIONS TO BE CONFIRMED ON SITE PRIOR TO CONSTRUCTION

DATE	INITIAL	REVISION	SUFFIX



CLIENT
SIPS Homes Scotland Ltd

PROJECT
Collinswell Park, Burntisland,
Fife. KY3 0EN

TITLE
PLOT 14

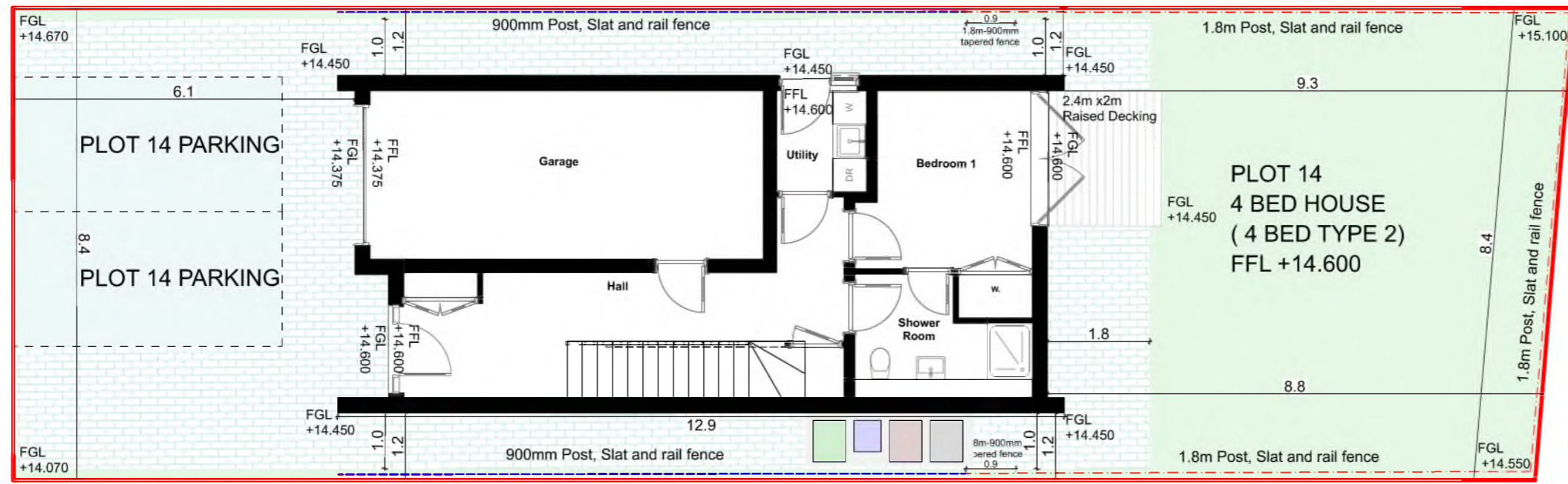
FOR COMMENT

SCALE @ A3	START DATE	DRAWN	CHECKED
	JUNE 2019	JM	DJM

No. 314 - PP
REV.

LEWIS HOUSE, UNIT 213, EAST WAY
HILLEND IND EST, DUNFERMLINE
FIFE, KY11 9JF, SCOTLAND

t - 01383 737101
e - info@acarchitects.biz
w - www.acarchitects.biz



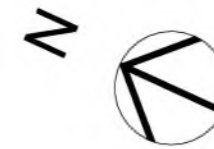
0. PLOT 14 1:100



key plan Scale 1:2000

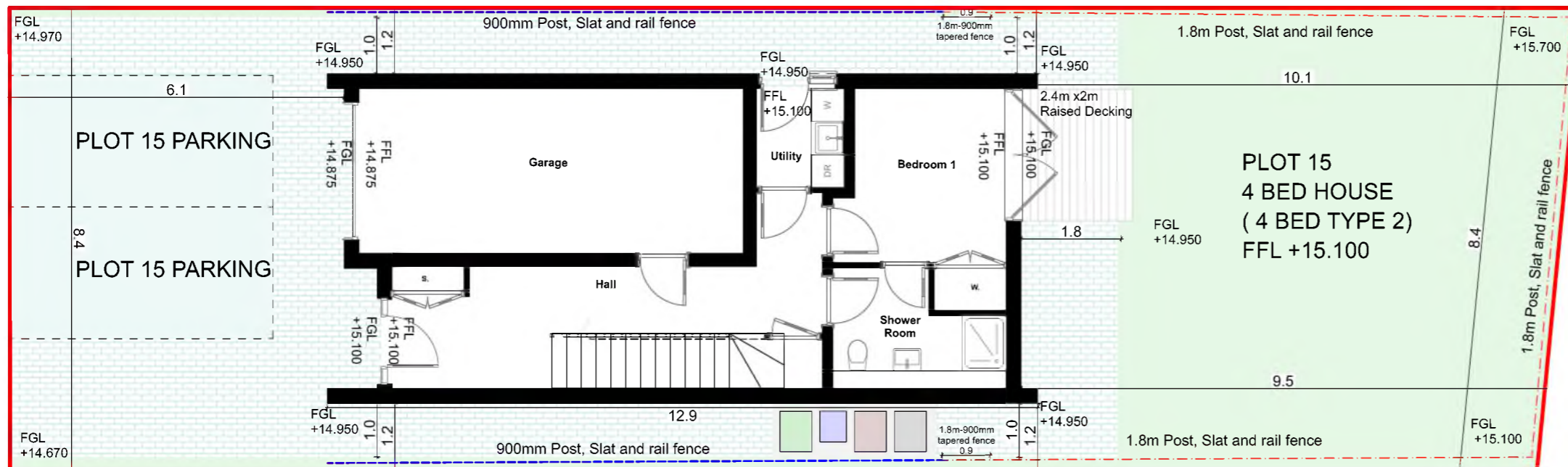
- SITE BOUNDARY
- - - 1800 mm POST/SLAT & RAIL FENCE
- - - 900mm POST/SLAT & RAIL FENCE
- GRASS
- BLOCK PAVING
- PARKING SPACE
- VISITOR PARKING
- WASTE & RECYCLING PROVISION
- RAISED DECKING
- PROPOSED NEW TREE PLANTING

ALL DIMENSIONS ARE INDICATIVE
TBC ON SITE



ALL DIMENSIONS TO BE CONFIRMED ON SITE PRIOR TO CONSTRUCTION

DATE	INITIAL	REVISION	SUFFIX



0. PLOT 15 1:100



CLIENT
SIPS Homes Scotland Ltd

PROJECT
Collinswell Park, Burntisland, Fife. KY3 0EN

TITLE
PLOT 15
FOR COMMENT

SCALE @ A3	START DATE	DRAWN	CHECKED
	JUNE 2019	JM	DJM

No. 314 - PP

REV. _____

LEWIS HOUSE, UNIT 213, EAST WAY
HILLENDD IND EST, DUNFERMLINE
FIFE, KY11 9JF, SCOTLAND

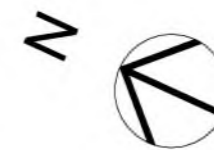
t - 01383 737101
e - info@acarchitects.biz
w - www.acarchitects.biz



key plan Scale 1:2000

- SITE BOUNDARY
- - - 1800 mm POST/SLAT & RAIL FENCE
- - - 900mm POST/SLAT & RAIL FENCE
- GRASS
- BLOCK PAVING
- PARKING SPACE
- VISITOR PARKING
- WASTE & RECYCLING PROVISION
- RAISED DECKING
- PROPOSED NEW TREE PLANTING

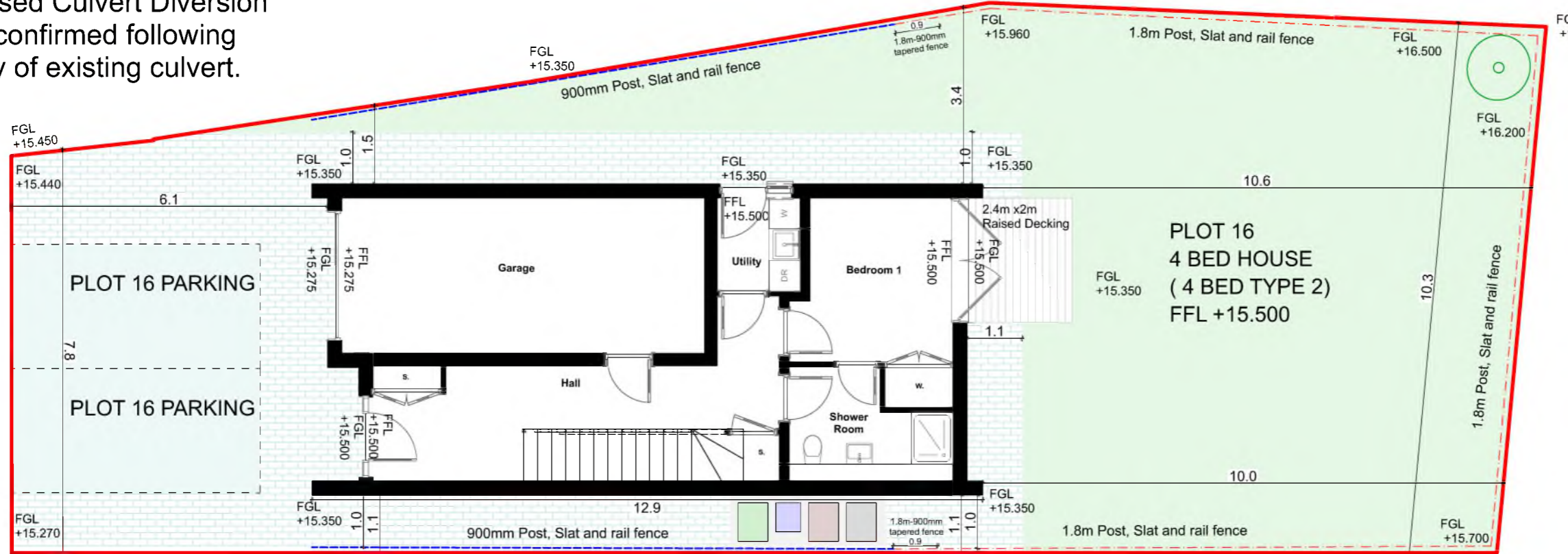
ALL DIMENSIONS ARE INDICATIVE
TBC ON SITE



ALL DIMENSIONS TO BE CONFIRMED ON SITE PRIOR TO CONSTRUCTION

DATE	INITIAL	REVISION	SUFFIX

Proposed Culvert Diversion to be confirmed following survey of existing culvert.



0.

PLOT 16

1:100



CLIENT
SIPS Homes Scotland Ltd

PROJECT
Collinswell Park, Burntisland, Fife. KY3 0EN

TITLE
PLOT 16
FOR COMMENT

SCALE @ A3	START DATE	DRAWN	CHECKED
	JUNE 2019	JM	DJM

No. 314 -PP

REV.
LEWIS HOUSE, UNIT 213, EAST WAY
HILLENDD IND EST, DUNFERMLINE
FIFE, KY11 9JF, SCOTLAND

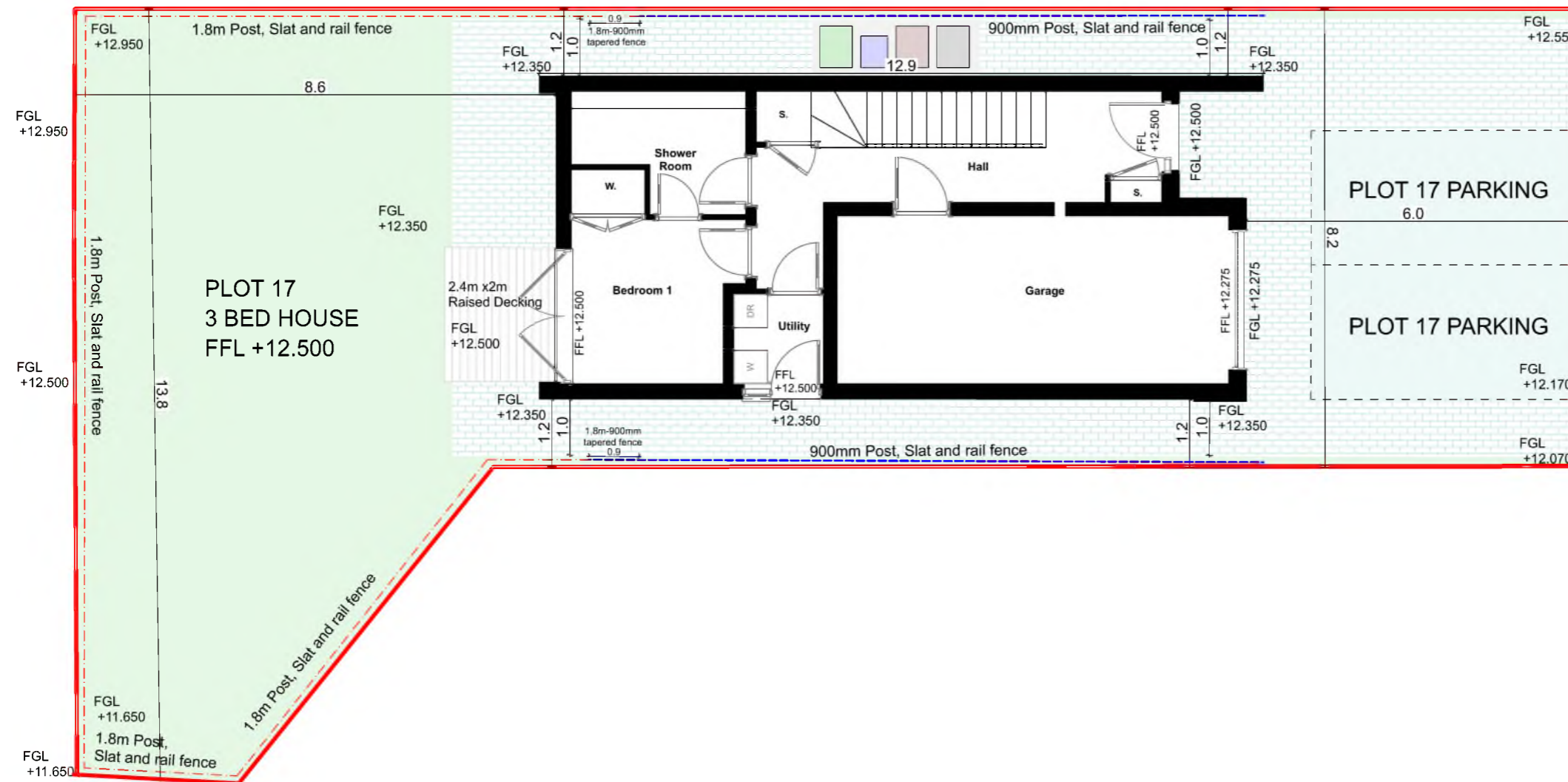
t - 01383 737101
e - info@acarchitects.biz
w - www.acarchitects.biz



key plan Scale 1:2000

- SITE BOUNDARY
- - - 1800 mm POST/SLAT & RAIL FENCE
- - - 900mm POST/SLAT & RAIL FENCE
- GRASS
- BLOCK PAVING
- PARKING SPACE
- VISITOR PARKING
- WASTE & RECYCLING PROVISION
- RAISED DECKING
- PROPOSED NEW TREE PLANTING

ALL DIMENSIONS ARE INDICATIVE
TBC ON SITE



0. PLOT 17 1:100

ALL DIMENSIONS TO BE CONFIRMED ON SITE PRIOR TO CONSTRUCTION

DATE	INITIAL	REVISION	SUFFIX



CLIENT
SIPS Homes Scotland Ltd

PROJECT
Collinswell Park, Burntisland,
Fife. KY3 0EN

TITLE
PLOT 17
FOR COMMENT

SCALE @ A3	START DATE	DRAWN	CHECKED
	JUNE 2019	JM	DJM

No. 314 - PP

REV.
LEWIS HOUSE, UNIT 213, EAST WAY
HILLENDD IND EST, DUNFERMLINE
FIFE, KY11 9JF, SCOTLAND

t - 01383 737101
e - info@acarchitects.biz
w - www.acarchitects.biz



key plan Scale 1:2000

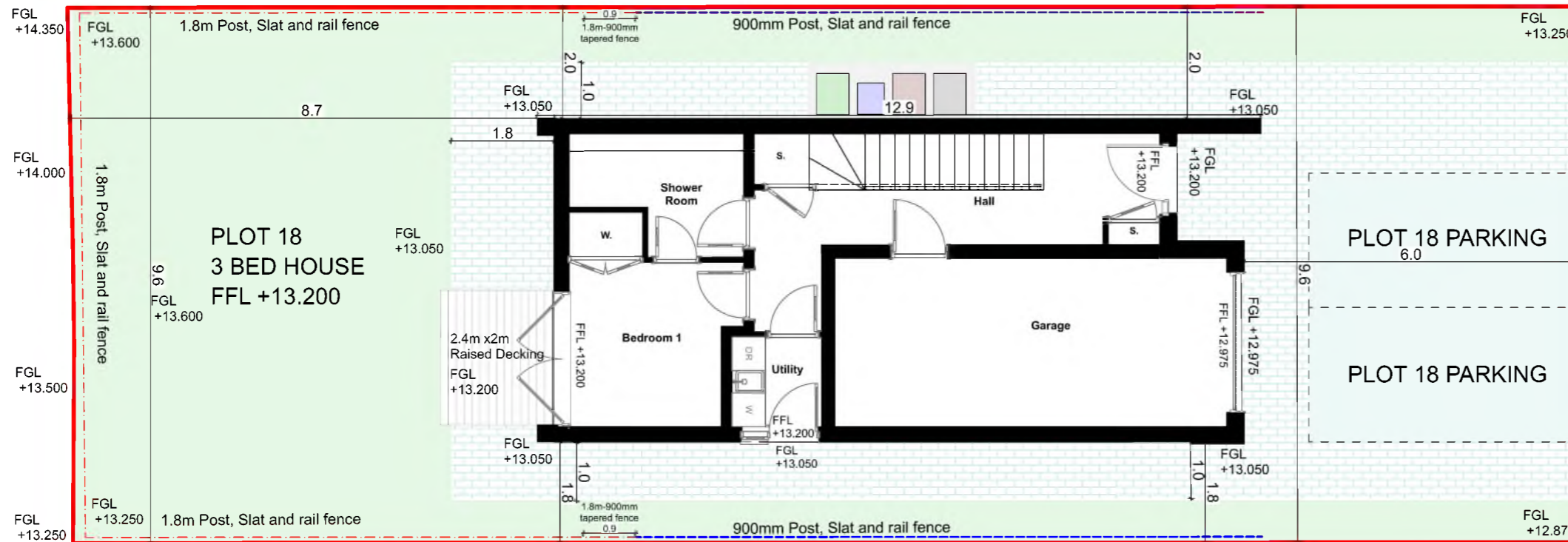
- SITE BOUNDARY
- - - 1800 mm POST/SLAT & RAIL FENCE
- - - 900mm POST/SLAT & RAIL FENCE
- GRASS
- BLOCK PAVING
- PARKING SPACE
- VISITOR PARKING
- WASTE & RECYCLING PROVISION
- RAISED DECKING
- PROPOSED NEW TREE PLANTING

ALL DIMENSIONS ARE INDICATIVE
TBC ON SITE



ALL DIMENSIONS TO BE CONFIRMED ON SITE PRIOR TO CONSTRUCTION

DATE	INITIAL	REVISION	SUFFIX



0. PLOT 18 1:100



CLIENT
SIPS Homes Scotland Ltd

PROJECT
Collinswell Park, Burntisland,
Fife. KY3 0EN

TITLE
PLOT 18
FOR COMMENT

SCALE @ A3	START DATE	DRAWN	CHECKED
	JUNE 2019	JM	DJM

No. 314 - PP

REV.
LEWIS HOUSE, UNIT 213, EAST WAY
HILLENDD IND EST, DUNFERMLINE
FIFE, KY11 9JF, SCOTLAND

t - 01383 737101
e - info@acarchitects.biz
w - www.acarchitects.biz



key plan Scale 1:2000

- SITE BOUNDARY
- - - 1800 mm POST/SLAT & RAIL FENCE
- - - 900mm POST/SLAT & RAIL FENCE
- GRASS
- BLOCK PAVING
- PARKING SPACE
- VISITOR PARKING
- WASTE & RECYCLING PROVISION
- RAISED DECKING
- PROPOSED NEW TREE PLANTING

ALL DIMENSIONS ARE INDICATIVE
TBC ON SITE

ALL DIMENSIONS TO BE CONFIRMED ON
SITE PRIOR TO CONSTRUCTION



DATE	INITIAL	REVISION	SUFFIX



CLIENT
SIPS Homes Scotland Ltd

PROJECT
Collinswell Park, Burntisland,
Fife. KY3 0EN

TITLE
PLOT 19

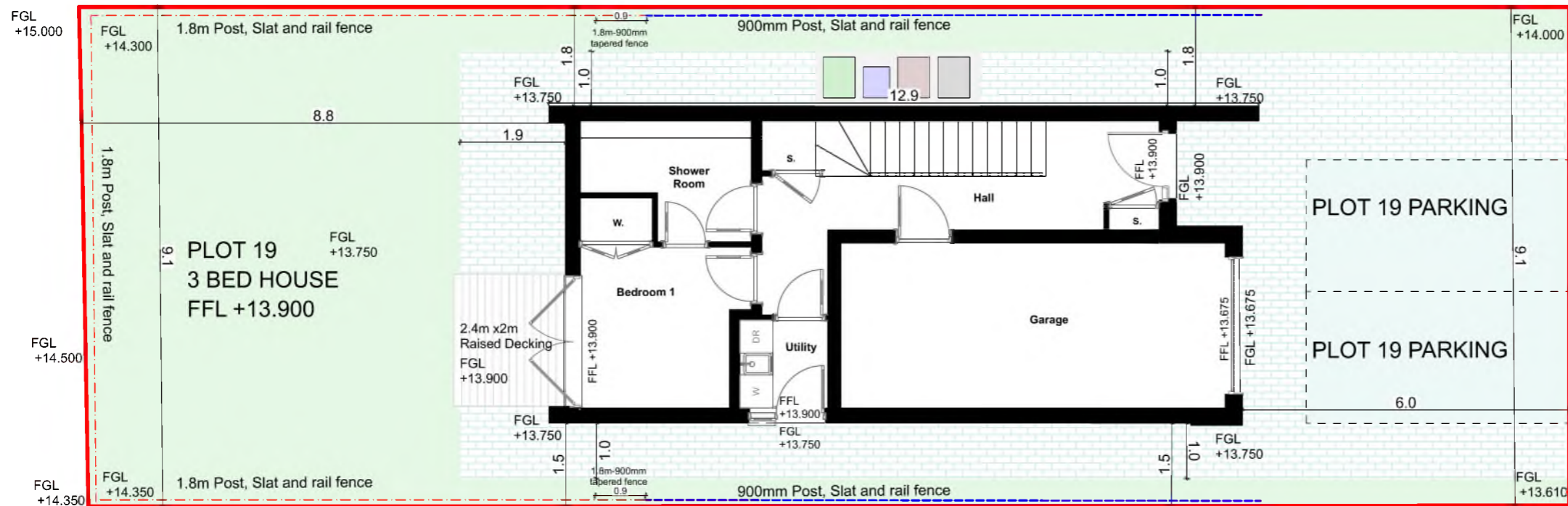
FOR COMMENT

SCALE @ A3	START DATE	DRAWN	CHECKED
	JUNE 2019	JM	DJM

No. 314 - PP
REV.

LEWIS HOUSE, UNIT 213, EAST WAY
HILLENDD IND EST, DUNFERMLINE
FIFE, KY11 9JF, SCOTLAND

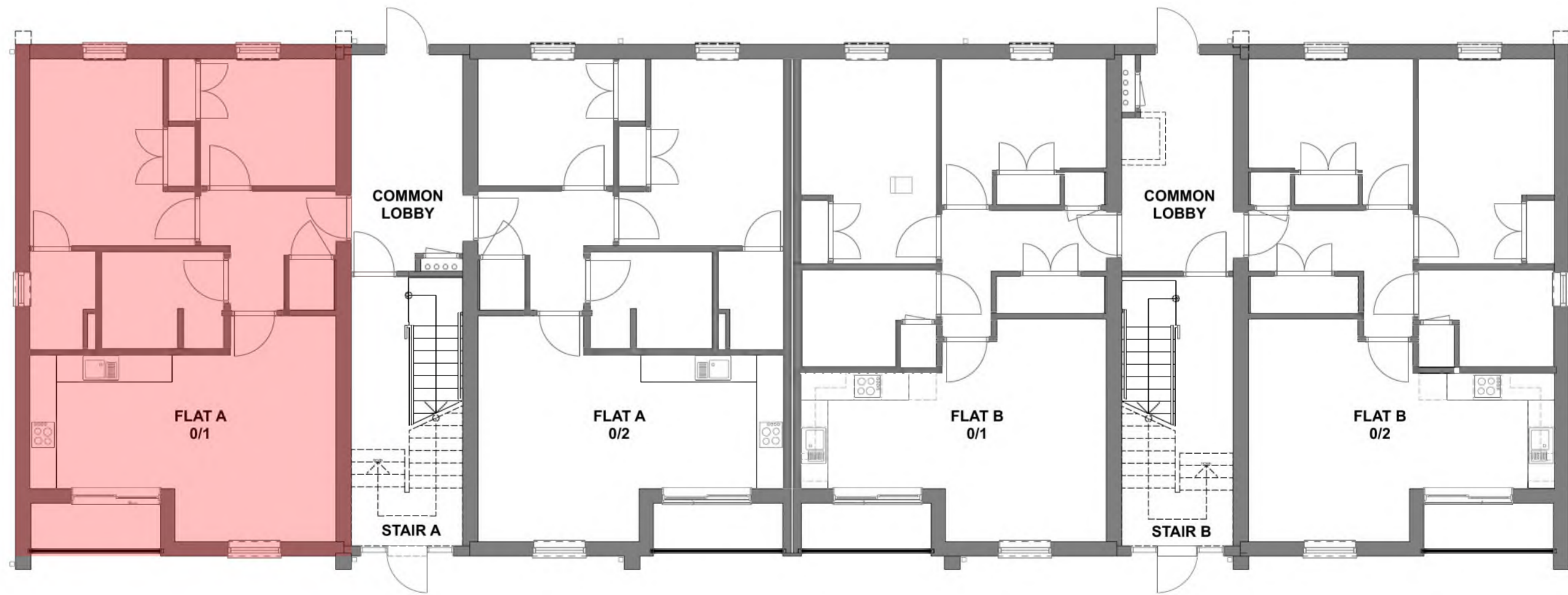
t - 01383 737101
e - info@acarchitects.biz
w - www.acarchitects.biz



0. PLOT 19 1:100



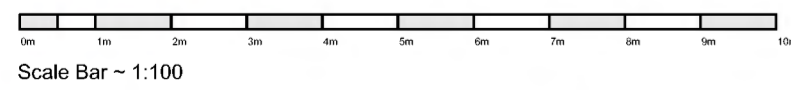
314 Block Plan 1:1250



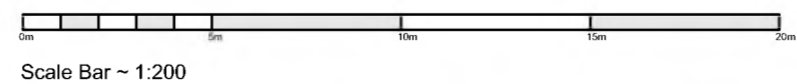
0. Ground Floor PLOT PLAN 1:100



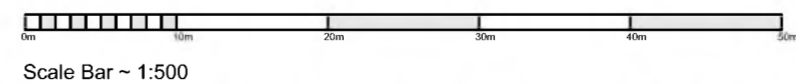
DENOTES FLAT PLOT



Scale Bar ~ 1:100



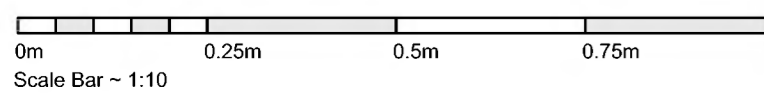
Scale Bar ~ 1:200



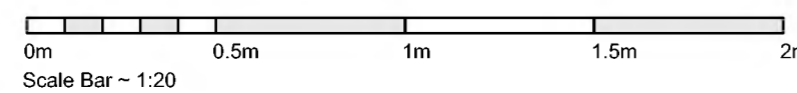
Scale Bar ~ 1:500



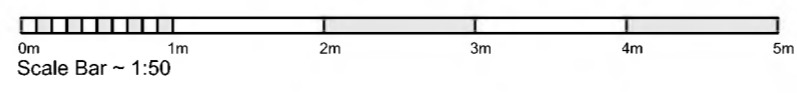
Scale Bar ~ 1:1250



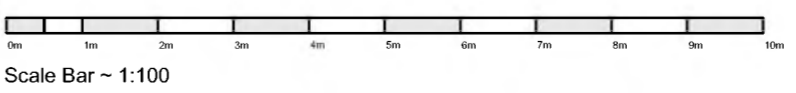
Scale Bar ~ 1:10



Scale Bar ~ 1:20



Scale Bar ~ 1:50



Scale Bar ~ 1:100

ALL DIMENSIONS TO BE CONFIRMED ON SITE PRIOR TO CONSTRUCTION

29.06.22	JM	Block Plan added	A
DATE	INITIAL	REVISION	SUFFIX



CLIENT
SIPS Homes Scotland Ltd

PROJECT
Collinswell Park, Burntisland,
Fife. KY3 0EN

TITLE
(A 0/1) Flat Plot Plan A2

FOR INFORMATION

SCALE @ A2	PRINTED DATE	DRAWN	CHECKED
	JUNE 2019	JM	DJM

No. 314 - FLATS CT 207 A (A 0/1)

REV. A

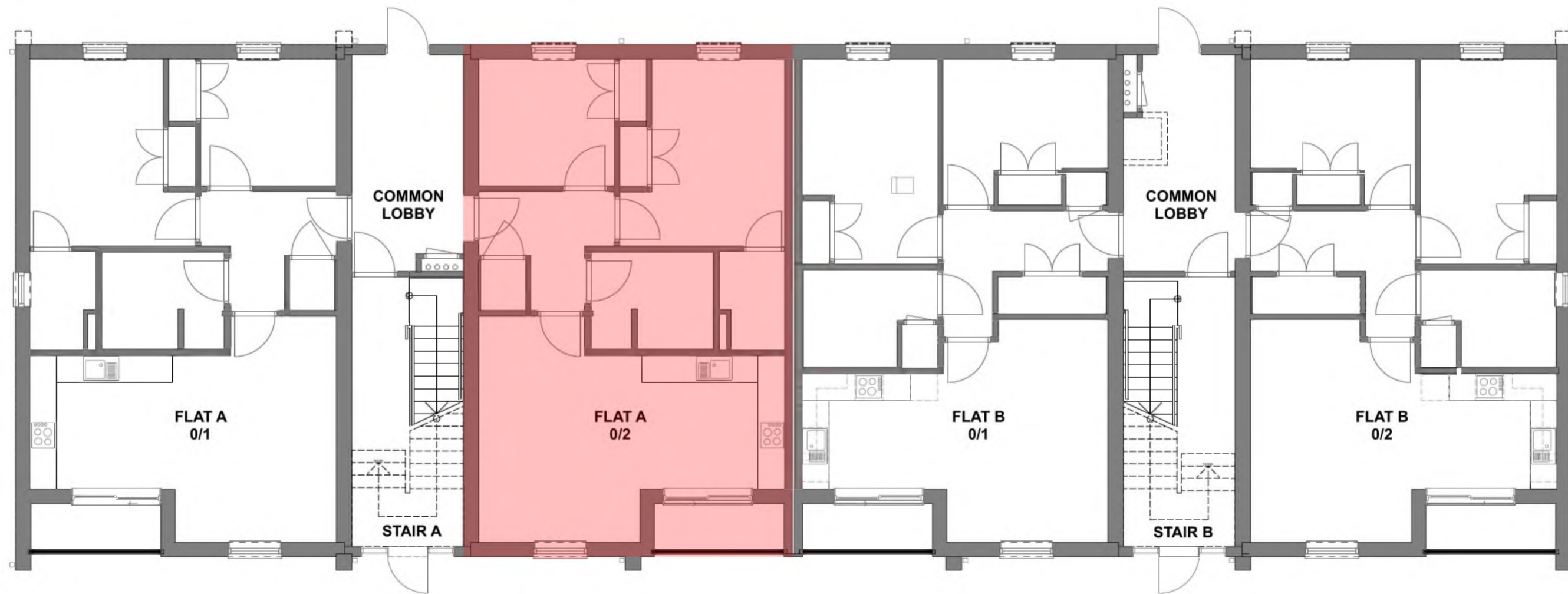
LEWIS HOUSE, UNIT 213, EAST WAY
HILLEND IND EST, DUNFERMLINE
FIFE, KY11 9JF, SCOTLAND

t - 01383 737101
e - info@acarchitects.biz
w - www.acarchitects.biz

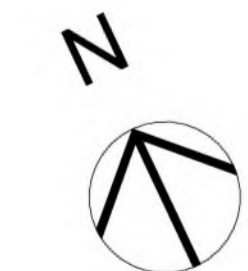
REPRODUCTION OF THESE DRAWINGS BY COPYING OR PRINTING IS CARRIED OUT AT YOUR OWN RISK, PLEASE REFER TO ASSOCIATED SCALE BAR. DO NOT SCALE FROM THESE DRAWINGS FOR CONSTRUCTION PURPOSES. ANY DISCREPANCIES SHOULD BE IMMEDIATELY RAISED WITH AC ARCHITECTS




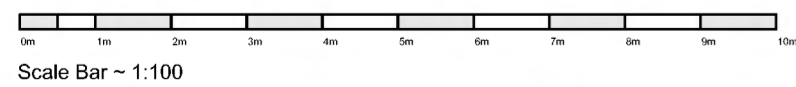
314 Block Plan 1:1250



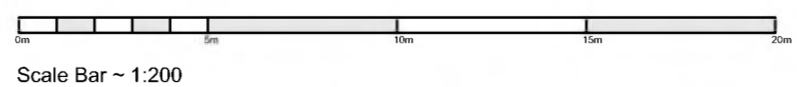
0. Ground Floor PLOT PLAN 1:100



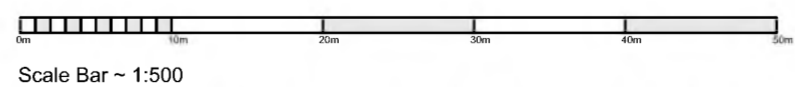
 DENOTES FLAT PLOT



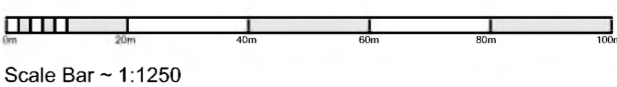
Scale Bar ~ 1:100



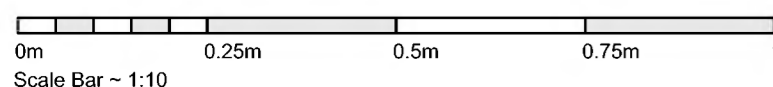
Scale Bar ~ 1:200



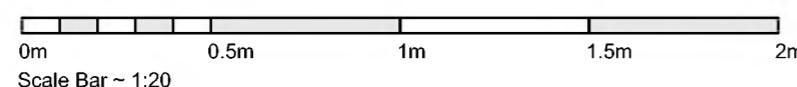
Scale Bar ~ 1:500



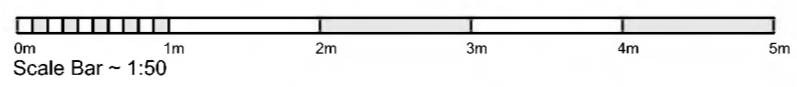
Scale Bar ~ 1:1250



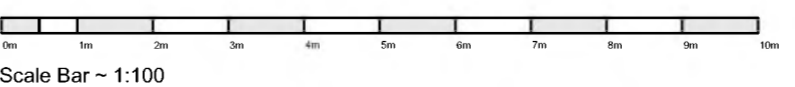
Scale Bar ~ 1:10



Scale Bar ~ 1:20



Scale Bar ~ 1:50



Scale Bar ~ 1:100

ALL DIMENSIONS TO BE CONFIRMED ON SITE PRIOR TO CONSTRUCTION

29.06.22	JM	Block Plan added	A
DATE	INITIAL	REVISION	SUFFIX



CLIENT
SIPS Homes Scotland Ltd

PROJECT
Collinswell Park, Burntisland,
Fife. KY3 0EN

TITLE
(A 0/2) Flat Plot Plan A2

FOR INFORMATION

SCALE @ A2	PRINTED DATE	DRAWN	CHECKED
	JUNE 2019	JM	DJM

No. 314 - FLATS CT 207 A (A 0/2)

REV. A

LEWIS HOUSE, UNIT 213, EAST WAY
HILLEND IND EST, DUNFERMLINE
FIFE, KY11 9JF, SCOTLAND

t - 01383 737101
e - info@acarchitects.biz
w - www.acarchitects.biz

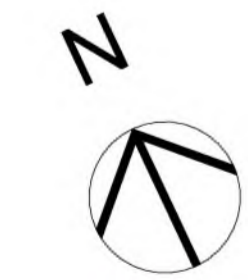
REPRODUCTION OF THESE DRAWINGS BY COPYING OR PRINTING IS CARRIED OUT AT YOUR OWN RISK, PLEASE REFER TO ASSOCIATED SCALE BAR. DO NOT SCALE FROM THESE DRAWINGS FOR CONSTRUCTION PURPOSES. ANY DISCREPANCIES SHOULD BE IMMEDIATELY RAISED WITH AC ARCHITECTS



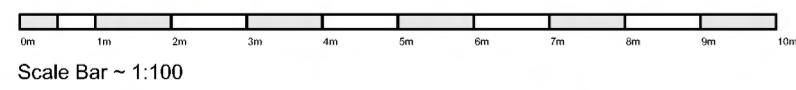
314 Block Plan 1:1250



1. First Floor PLOT PLAN 1:100

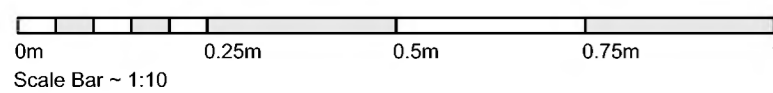


DENOTES FLAT PLOT

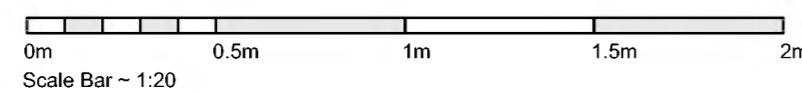


Scale Bar ~ 1:100

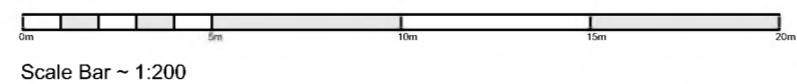
REPRODUCTION OF THESE DRAWINGS BY COPYING OR PRINTING IS CARRIED OUT AT YOUR OWN RISK, PLEASE REFER TO ASSOCIATED SCALE BAR. DO NOT SCALE FROM THESE DRAWINGS FOR CONSTRUCTION PURPOSES. ANY DISCREPANCIES SHOULD BE IMMEDIATELY RAISED WITH AC ARCHITECTS



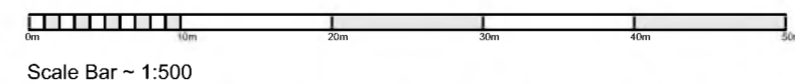
Scale Bar ~ 1:10



Scale Bar ~ 1:20



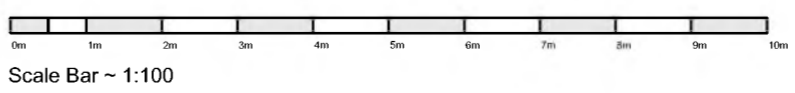
Scale Bar ~ 1:200



Scale Bar ~ 1:500



Scale Bar ~ 1:1250



Scale Bar ~ 1:100

ALL DIMENSIONS TO BE CONFIRMED ON SITE PRIOR TO CONSTRUCTION

29.06.22	JM	Block Plan added	A
DATE	INITIAL	REVISION	SUFFIX



CLIENT
SIPS Homes Scotland Ltd

PROJECT
Collinswell Park, Burntisland,
Fife. KY3 0EN

TITLE
(A 1/1) Flat Plot Plan A2

FOR INFORMATION

SCALE @ A2	PRINTED DATE	DRAWN	CHECKED
	JUNE 2019	JM	DJM

No. 314 - FLATS CT 207 A (A 1/1)

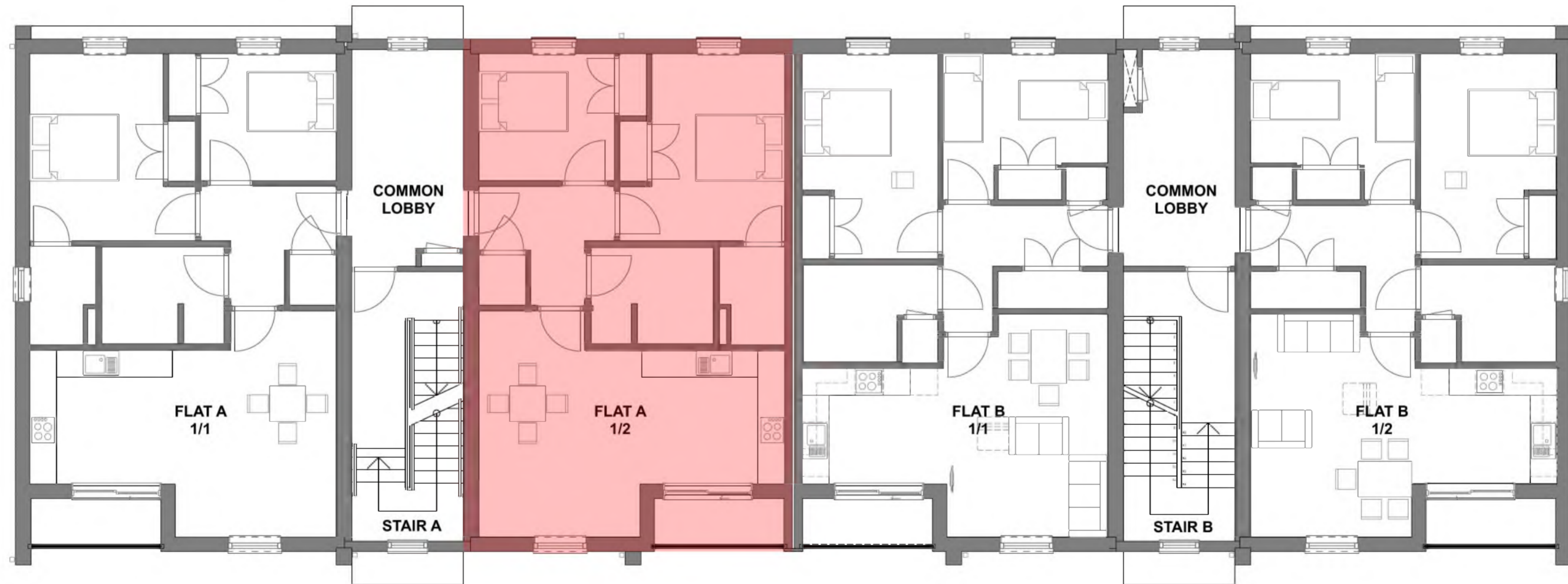
REV. A

LEWIS HOUSE, UNIT 213, EAST WAY
HILLEND IND EST, DUNFERMLINE
FIFE, KY11 9JF, SCOTLAND

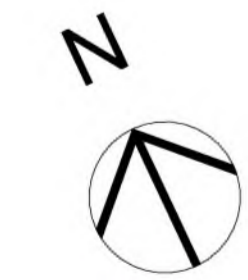
t - 01383 737101
e - info@acarchitects.biz
w - www.acarchitects.biz




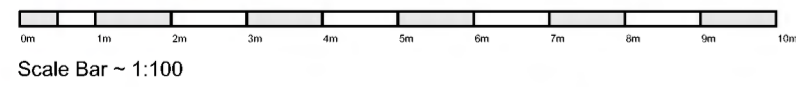
314 Block Plan 1:1250



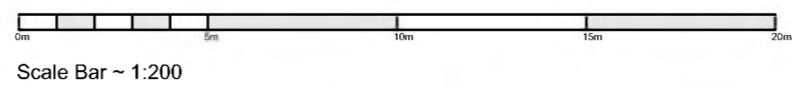
1. First Floor PLOT PLAN 1:100



 DENOTES FLAT PLOT



Scale Bar ~ 1:100



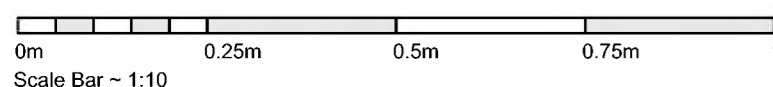
Scale Bar ~ 1:200



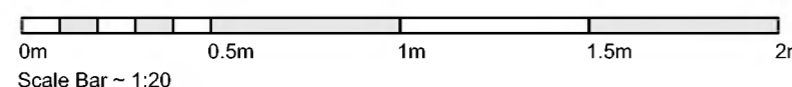
Scale Bar ~ 1:500



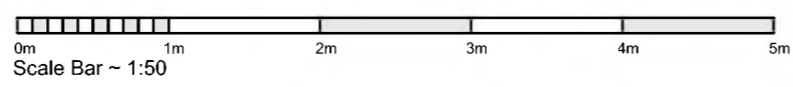
Scale Bar ~ 1:1250



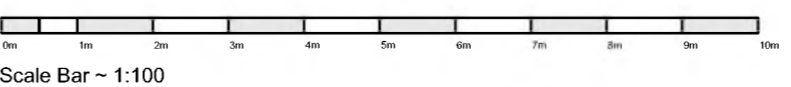
Scale Bar ~ 1:10



Scale Bar ~ 1:20



Scale Bar ~ 1:50



Scale Bar ~ 1:100

ALL DIMENSIONS TO BE CONFIRMED ON SITE PRIOR TO CONSTRUCTION

29.06.22	JM	Block Plan added	A
DATE	INITIAL	REVISION	SUFFIX



CLIENT
SIPS Homes Scotland Ltd

PROJECT
Collinswell Park, Burntisland,
Fife. KY3 0EN

TITLE
(A 1/2) Flat Plot Plan A2

FOR INFORMATION

SCALE @ A2	PRINTED DATE	DRAWN	CHECKED
	JUNE 2019	JM	DJM

No. 314 - FLATS CT 207 A (A 1/2)

REV. A

LEWIS HOUSE, UNIT 213, EAST WAY
HILLEND IND EST, DUNFERMLINE
FIFE, KY11 9JF, SCOTLAND

t - 01383 737101
e - info@acarchitects.biz
w - www.acarchitects.biz

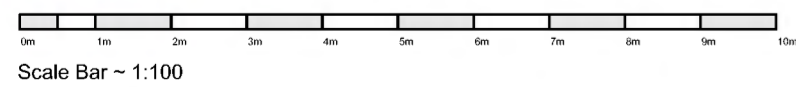
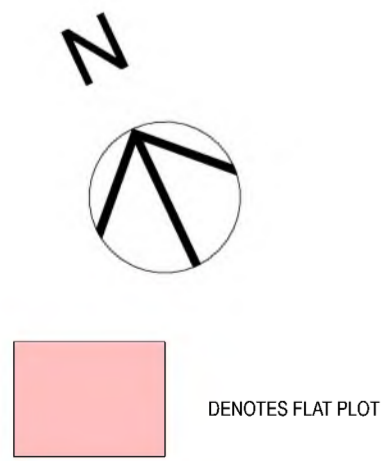
REPRODUCTION OF THESE DRAWINGS BY COPYING OR PRINTING IS CARRIED OUT AT YOUR OWN RISK, PLEASE REFER TO ASSOCIATED SCALE BAR. DO NOT SCALE FROM THESE DRAWINGS FOR CONSTRUCTION PURPOSES. ANY DISCREPANCIES SHOULD BE IMMEDIATELY RAISED WITH AC ARCHITECTS



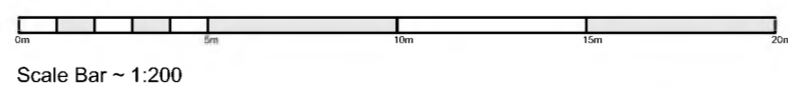
314 Block Plan 1:1250



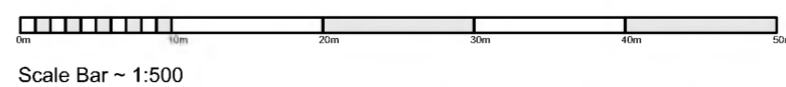
2. Second Floor PLOT PLAN 1:100



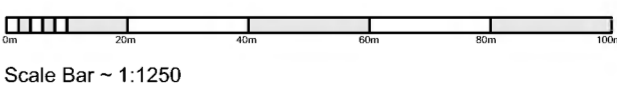
Scale Bar ~ 1:100



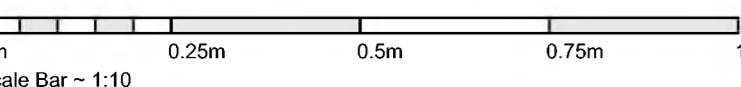
Scale Bar ~ 1:200



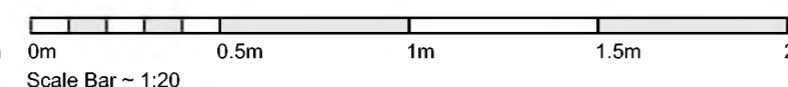
Scale Bar ~ 1:500



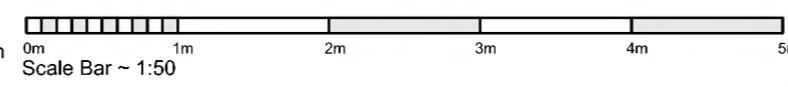
Scale Bar ~ 1:1250



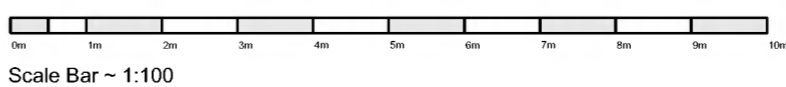
Scale Bar ~ 1:10



Scale Bar ~ 1:20



Scale Bar ~ 1:50



Scale Bar ~ 1:100

ALL DIMENSIONS TO BE CONFIRMED ON SITE PRIOR TO CONSTRUCTION

29.06.22	JM	Block Plan added	A
DATE	INITIAL	REVISION	SUFFIX



CLIENT
SIPS Homes Scotland Ltd

PROJECT
Collinswell Park, Burntisland,
Fife. KY3 0EN

TITLE
(A 2/1) Flat Plot Plan A2

FOR INFORMATION

SCALE @ A2	PRINTED DATE	DRAWN	CHECKED
	JUNE 2019	JM	DJM

No. 314 - FLATS CT 207 A (A 2/1)

REV. A

LEWIS HOUSE, UNIT 213, EAST WAY
HILLEND IND EST, DUNFERMLINE
FIFE, KY11 9JF, SCOTLAND

t - 01383 737101
e - info@acarchitects.biz
w - www.acarchitects.biz

REPRODUCTION OF THESE DRAWINGS BY COPYING OR PRINTING IS CARRIED OUT AT YOUR OWN RISK, PLEASE REFER TO ASSOCIATED SCALE BAR. DO NOT SCALE FROM THESE DRAWINGS FOR CONSTRUCTION PURPOSES. ANY DISCREPANCIES SHOULD BE IMMEDIATELY RAISED WITH AC ARCHITECTS




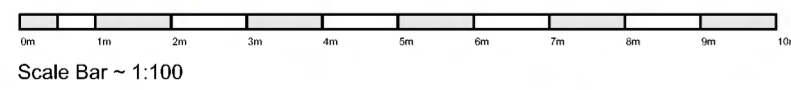
314 Block Plan 1:1250



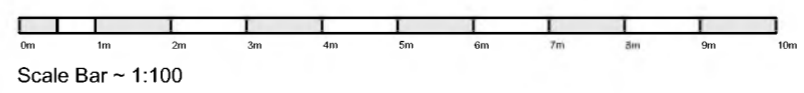
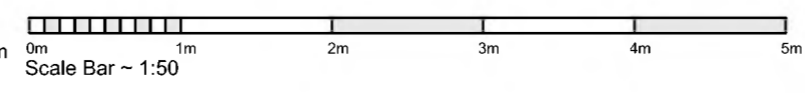
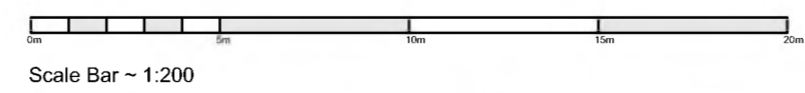
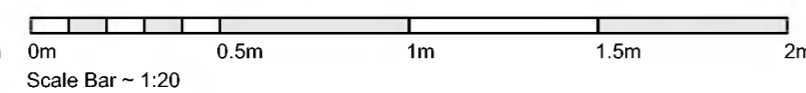
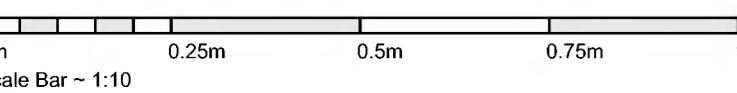
2. Second Floor PLOT PLAN 1:100



 DENOTES FLAT PLOT



REPRODUCTION OF THESE DRAWINGS BY COPYING OR PRINTING IS CARRIED OUT AT YOUR OWN RISK, PLEASE REFER TO ASSOCIATED SCALE BAR. DO NOT SCALE FROM THESE DRAWINGS FOR CONSTRUCTION PURPOSES. ANY DISCREPANCIES SHOULD BE IMMEDIATELY RAISED WITH AC ARCHITECTS



ALL DIMENSIONS TO BE CONFIRMED ON SITE PRIOR TO CONSTRUCTION

29.06.22	JM	Block Plan added	A
DATE	INITIAL	REVISION	SUFFIX



CLIENT
SIPS Homes Scotland Ltd

PROJECT
Collinswell Park, Burntisland,
Fife. KY3 0EN

TITLE
(A 2/2) Flat Plot Plan A2
FOR INFORMATION

SCALE @ A2	PRINTED DATE	DRAWN	CHECKED
	JUNE 2019	JM	DJM

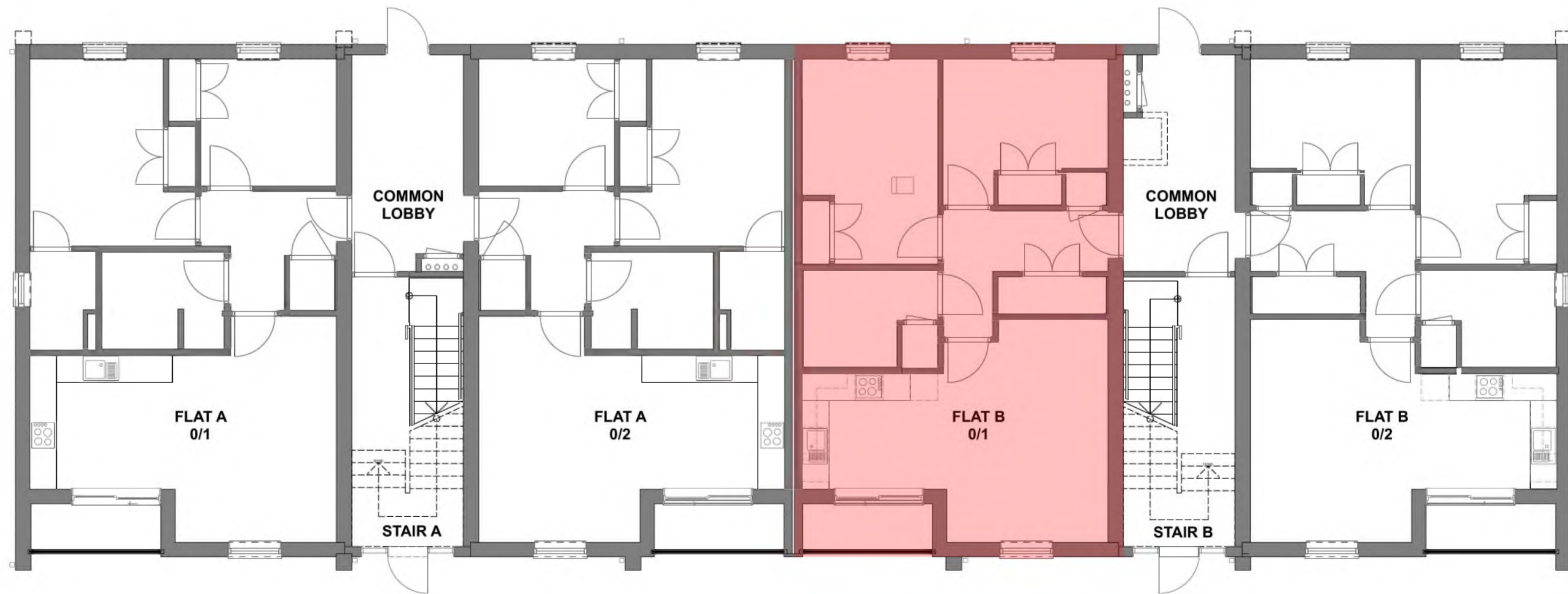
No. 314 - FLATS CT 207 A (A 2/2)

REV. A
LEWIS HOUSE, UNIT 213, EAST WAY
HILLEND IND EST, DUNFERMLINE
FIFE, KY11 9JF, SCOTLAND

t - 01383 737101
e - info@acarchitects.biz
w - www.acarchitects.biz




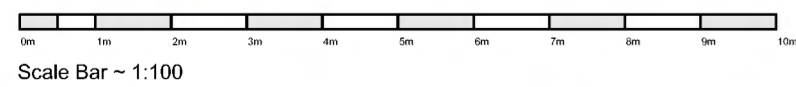
314 Block Plan 1:1250



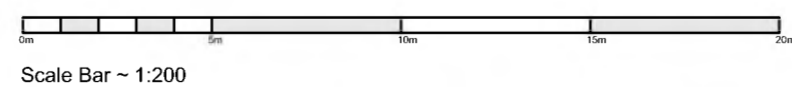
0. Ground Floor PLOT PLAN 1:100



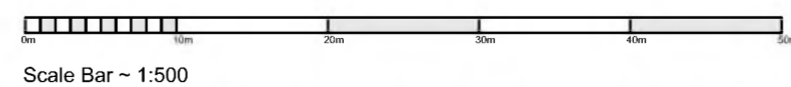
 DENOTES FLAT PLOT



Scale Bar ~ 1:100



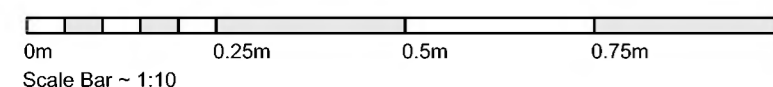
Scale Bar ~ 1:200



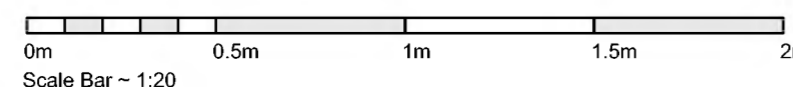
Scale Bar ~ 1:500



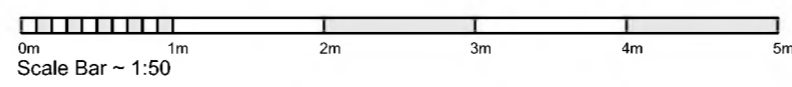
Scale Bar ~ 1:1250



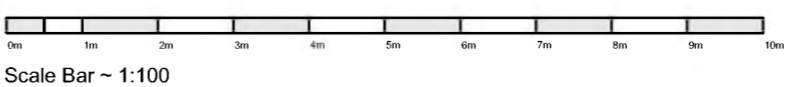
Scale Bar ~ 1:10



Scale Bar ~ 1:20



Scale Bar ~ 1:50



Scale Bar ~ 1:100

ALL DIMENSIONS TO BE CONFIRMED ON SITE PRIOR TO CONSTRUCTION

29.06.22	JM	Block Plan added	A
DATE	INITIAL	REVISION	SUFFIX



CLIENT
SIPS Homes Scotland Ltd

PROJECT
Collinswell Park, Burntisland,
Fife. KY3 0EN

TITLE
(B 0/1) Flat Plot Plan A2

FOR INFORMATION

SCALE @ A2	PRINTED DATE	DRAWN	CHECKED
	JUNE 2019	JM	DJM

No. 314 - FLATS CT 207 A (B 0/1)

REV. A

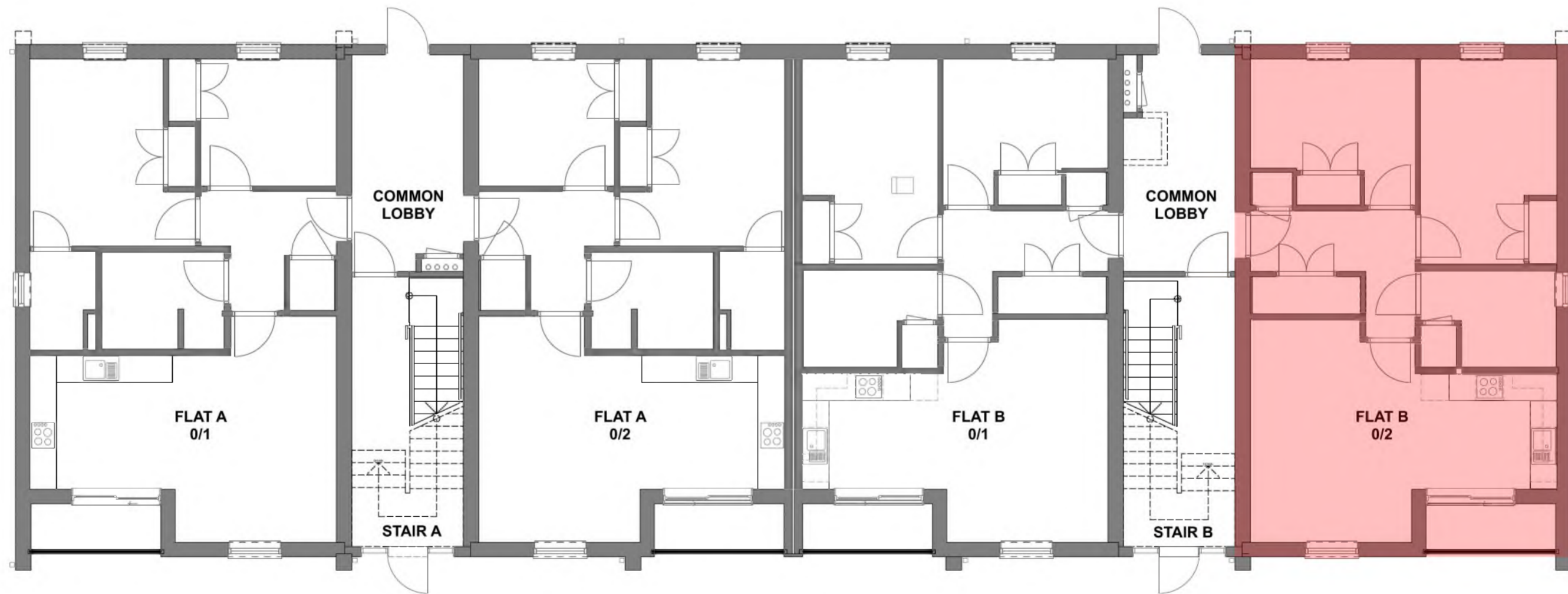
LEWIS HOUSE, UNIT 213, EAST WAY
HILLEND IND EST, DUNFERMLINE
FIFE, KY11 9JF, SCOTLAND

t - 01383 737101
e - info@acarchitects.biz
w - www.acarchitects.biz

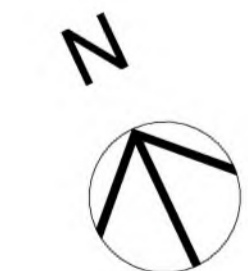
REPRODUCTION OF THESE DRAWINGS BY COPYING OR PRINTING IS CARRIED OUT AT YOUR OWN RISK, PLEASE REFER TO ASSOCIATED SCALE BAR. DO NOT SCALE FROM THESE DRAWINGS FOR CONSTRUCTION PURPOSES. ANY DISCREPANCIES SHOULD BE IMMEDIATELY RAISED WITH AC ARCHITECTS




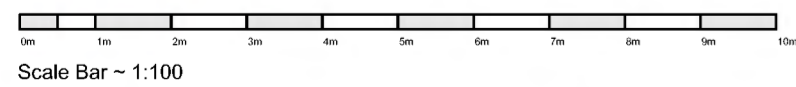
314 Block Plan 1:1250



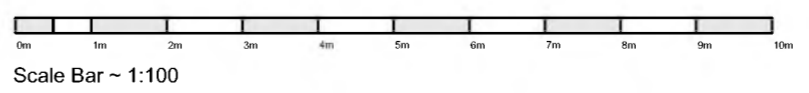
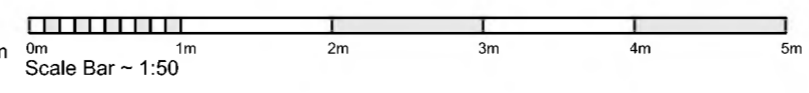
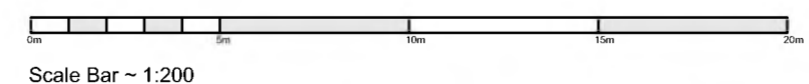
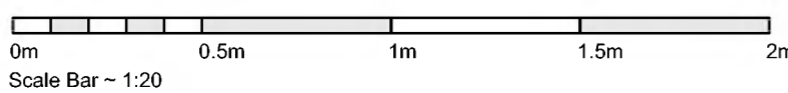
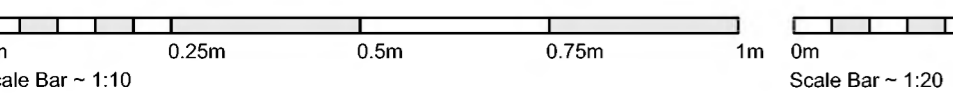
0. Ground Floor PLOT PLAN 1:100



 DENOTES FLAT PLOT



REPRODUCTION OF THESE DRAWINGS BY COPYING OR PRINTING IS CARRIED OUT AT YOUR OWN RISK, PLEASE REFER TO ASSOCIATED SCALE BAR. DO NOT SCALE FROM THESE DRAWINGS FOR CONSTRUCTION PURPOSES. ANY DISCREPANCIES SHOULD BE IMMEDIATELY RAISED WITH AC ARCHITECTS



ALL DIMENSIONS TO BE CONFIRMED ON SITE PRIOR TO CONSTRUCTION

29.06.22	JM	Block Plan added	A
DATE	INITIAL	REVISION	SUFFIX



CLIENT
SIPS Homes Scotland Ltd

PROJECT
Collinswell Park, Burntisland,
Fife. KY3 0EN

TITLE
(B 0/2) Flat Plot Plan A2

FOR INFORMATION

SCALE @ A2	PRINTED DATE	DRAWN	CHECKED
	JUNE 2019	JM	DJM

No. 314 - FLATS CT 207 A (B 0/2)

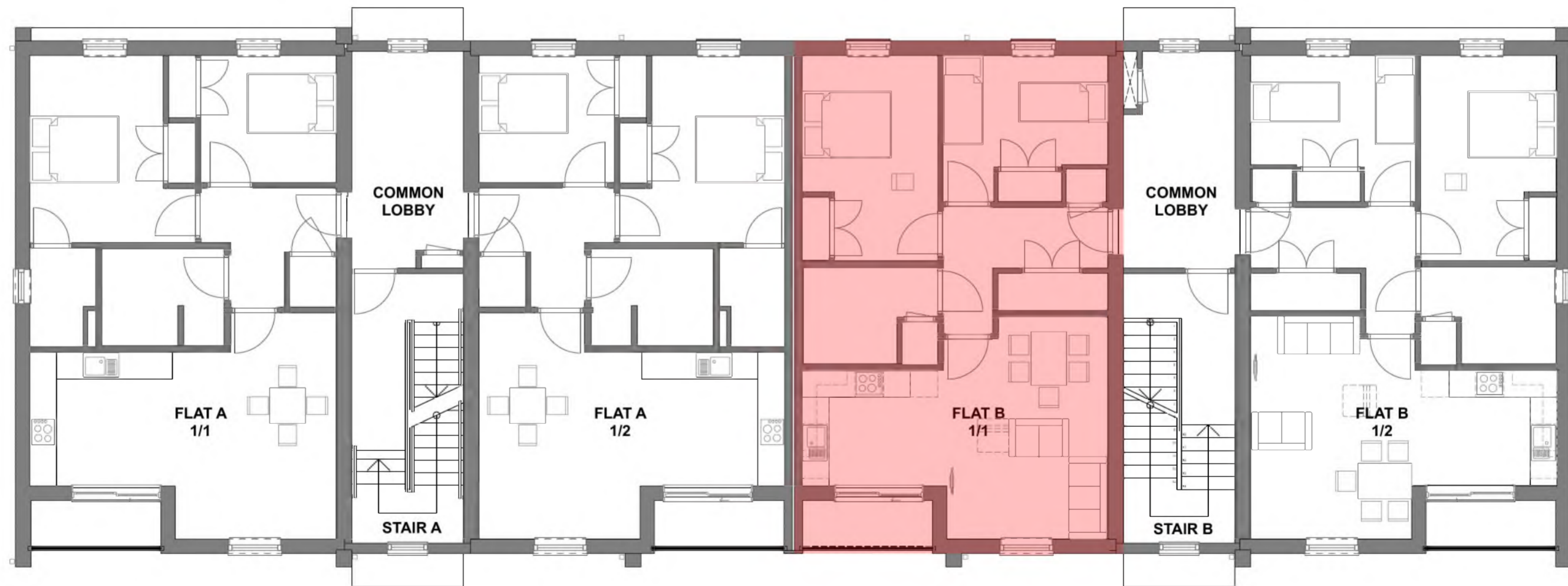
REV. A

LEWIS HOUSE, UNIT 213, EAST WAY
HILLEND IND EST, DUNFERMLINE
FIFE, KY11 9JF, SCOTLAND

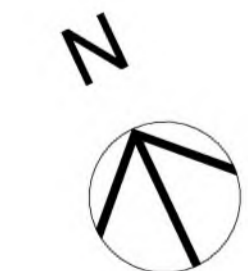
t - 01383 737101
e - info@acarchitects.biz
w - www.acarchitects.biz




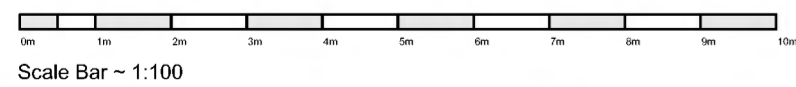
314 Block Plan 1:1250



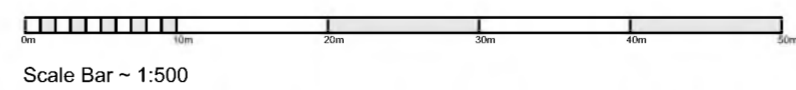
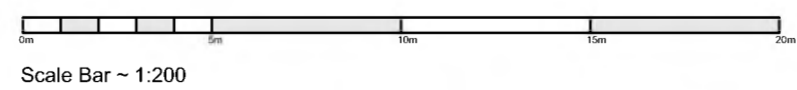
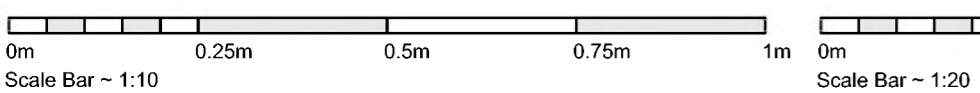
1. First Floor PLOT PLAN 1:100



 DENOTES FLAT PLOT



REPRODUCTION OF THESE DRAWINGS BY COPYING OR PRINTING IS CARRIED OUT AT YOUR OWN RISK, PLEASE REFER TO ASSOCIATED SCALE BAR. DO NOT SCALE FROM THESE DRAWINGS FOR CONSTRUCTION PURPOSES. ANY DISCREPANCIES SHOULD BE IMMEDIATELY RAISED WITH AC ARCHITECTS



ALL DIMENSIONS TO BE CONFIRMED ON SITE PRIOR TO CONSTRUCTION

29.06.22	JM	Block Plan added	A
DATE	INITIAL	REVISION	SUFFIX



CLIENT
SIPS Homes Scotland Ltd

PROJECT
Collinswell Park, Burntisland,
Fife. KY3 0EN

TITLE
(B 1/1) Flat Plot Plan A2

FOR INFORMATION

SCALE @ A2	PRINTED DATE	DRAWN	CHECKED
	JUNE 2019	JM	DJM

No. 314 - FLATS CT 207 A (B 1/1)

REV. A

LEWIS HOUSE, UNIT 213, EAST WAY
HILLEND IND EST, DUNFERMLINE
FIFE, KY11 9JF, SCOTLAND

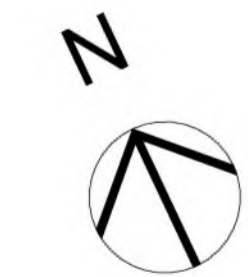
t - 01383 737101
e - info@acarchitects.biz
w - www.acarchitects.biz




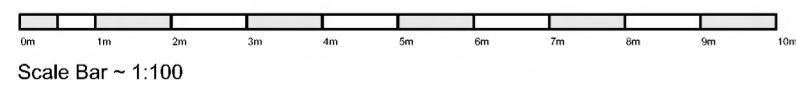
314 Block Plan 1:1250



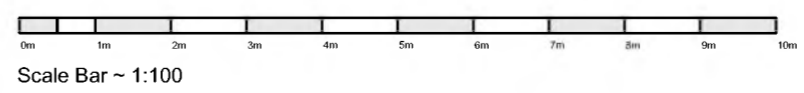
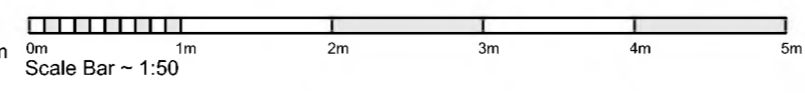
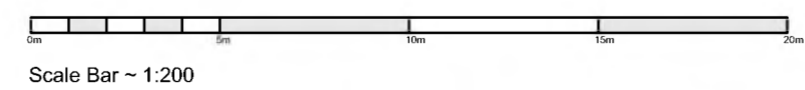
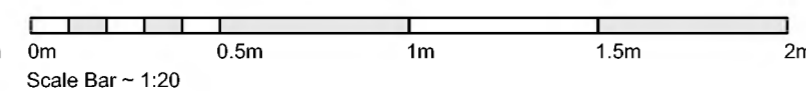
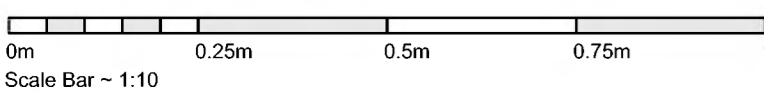
1. First Floor PLOT PLAN 1:100



 DENOTES FLAT PLOT



REPRODUCTION OF THESE DRAWINGS BY COPYING OR PRINTING IS CARRIED OUT AT YOUR OWN RISK, PLEASE REFER TO ASSOCIATED SCALE BAR. DO NOT SCALE FROM THESE DRAWINGS FOR CONSTRUCTION PURPOSES. ANY DISCREPANCIES SHOULD BE IMMEDIATELY RAISED WITH AC ARCHITECTS



ALL DIMENSIONS TO BE CONFIRMED ON SITE PRIOR TO CONSTRUCTION

29.06.22	JM	Block Plan added	A
DATE	INITIAL	REVISION	SUFFIX



CLIENT
SIPS Homes Scotland Ltd

PROJECT
Collinswell Park, Burntisland,
Fife. KY3 0EN

TITLE
(B 1/2) Flat Plot Plan A2

FOR INFORMATION

SCALE @ A2	PRINTED DATE	DRAWN	CHECKED
	JUNE 2019	JM	DJM

No. 314 - FLATS CT 207 A (B 1/2)

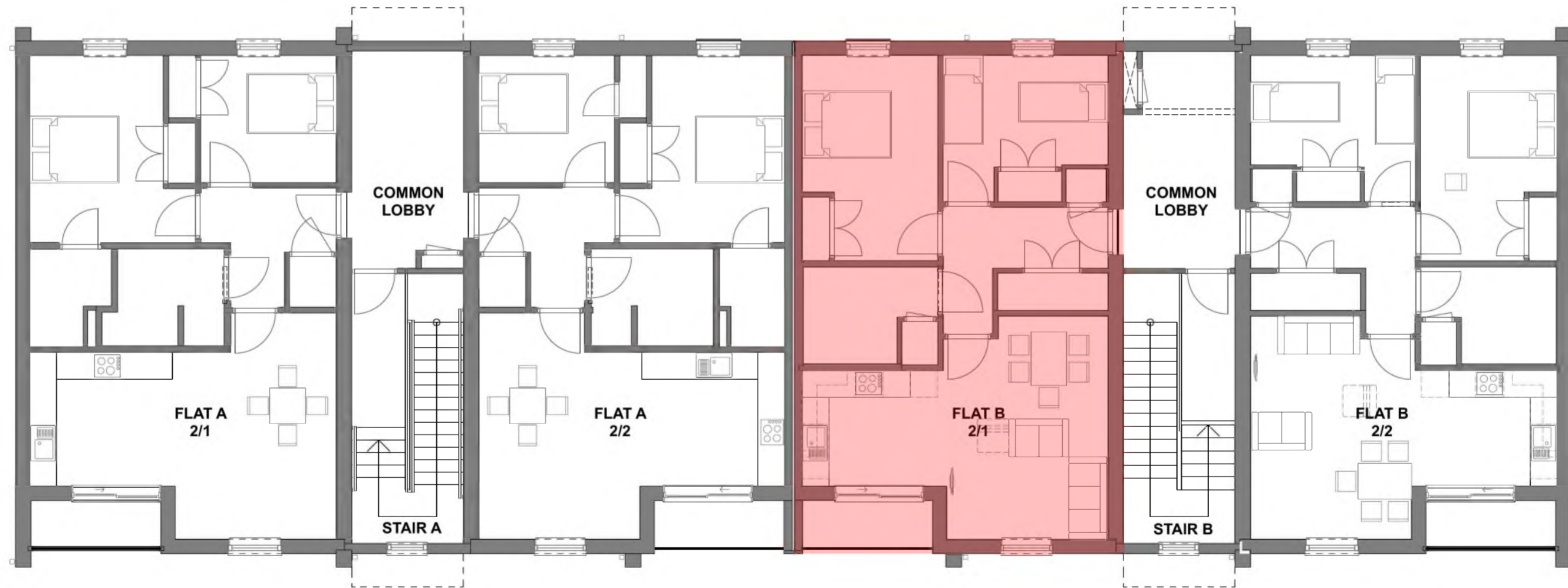
REV. A

LEWIS HOUSE, UNIT 213, EAST WAY
HILLEND IND EST, DUNFERMLINE
FIFE, KY11 9JF, SCOTLAND

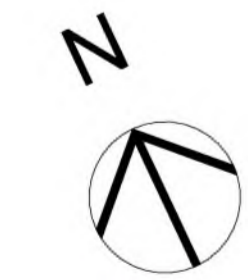
t - 01383 737101
e - info@acarchitects.biz
w - www.acarchitects.biz




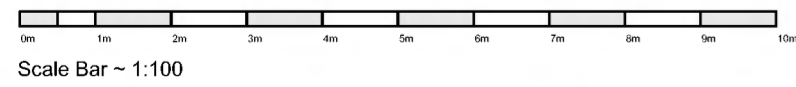
314 Block Plan 1:1250



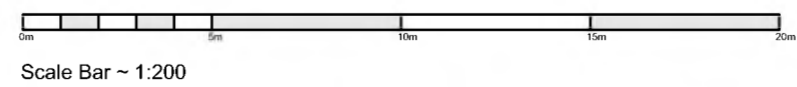
2. Second Floor PLOT PLAN 1:100



 DENOTES FLAT PLOT



Scale Bar ~ 1:100



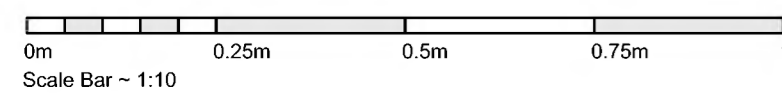
Scale Bar ~ 1:200



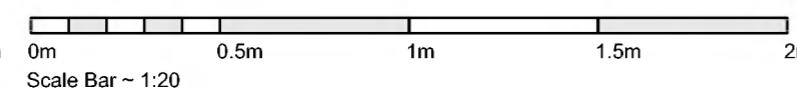
Scale Bar ~ 1:500



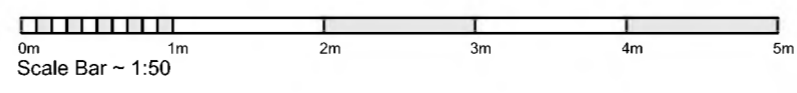
Scale Bar ~ 1:1250



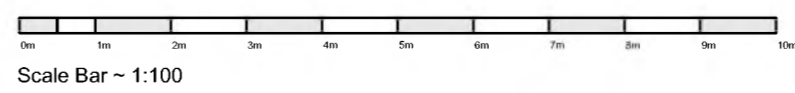
Scale Bar ~ 1:10



Scale Bar ~ 1:20



Scale Bar ~ 1:50



Scale Bar ~ 1:100

ALL DIMENSIONS TO BE CONFIRMED ON SITE PRIOR TO CONSTRUCTION

29.06.22	JM	Block Plan added	A
DATE	INITIAL	REVISION	SUFFIX



CLIENT
SIPS Homes Scotland Ltd

PROJECT
Collinswell Park, Burntisland,
Fife. KY3 0EN

TITLE
(B 2/1) Flat Plot Plan A2

FOR INFORMATION

SCALE @ A2	PRINTED DATE	DRAWN	CHECKED
	JUNE 2019	JM	DJM

No. 314 - FLATS CT 207 A (B 2/1)

REV. A

LEWIS HOUSE, UNIT 213, EAST WAY
HILLEND IND EST, DUNFERMLINE
FIFE, KY11 9JF, SCOTLAND

t - 01383 737101
e - info@acarchitects.biz
w - www.acarchitects.biz

REPRODUCTION OF THESE DRAWINGS BY COPYING OR PRINTING IS CARRIED OUT AT YOUR OWN RISK, PLEASE REFER TO ASSOCIATED SCALE BAR. DO NOT SCALE FROM THESE DRAWINGS FOR CONSTRUCTION PURPOSES. ANY DISCREPANCIES SHOULD BE IMMEDIATELY RAISED WITH AC ARCHITECTS




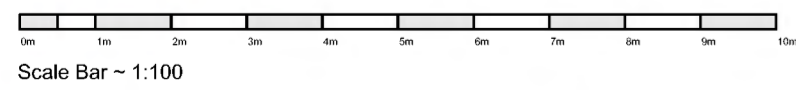
314 Block Plan 1:1250



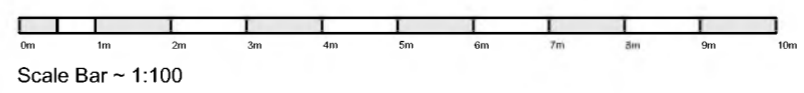
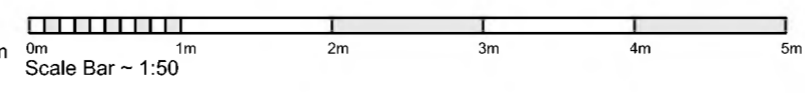
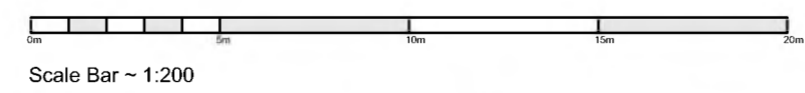
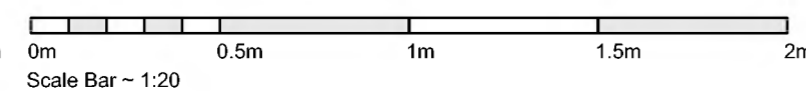
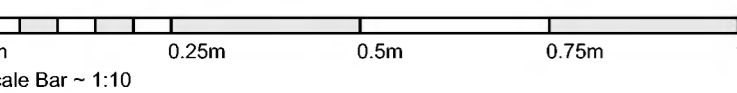
2. Second Floor PLOT PLAN 1:100



 DENOTES FLAT PLOT



REPRODUCTION OF THESE DRAWINGS BY COPYING OR PRINTING IS CARRIED OUT AT YOUR OWN RISK, PLEASE REFER TO ASSOCIATED SCALE BAR. DO NOT SCALE FROM THESE DRAWINGS FOR CONSTRUCTION PURPOSES. ANY DISCREPANCIES SHOULD BE IMMEDIATELY RAISED WITH AC ARCHITECTS



ALL DIMENSIONS TO BE CONFIRMED ON SITE PRIOR TO CONSTRUCTION

29.06.22	JM	Block Plan added	A
DATE	INITIAL	REVISION	SUFFIX



CLIENT
SIPS Homes Scotland Ltd

PROJECT
Collinswell Park, Burntisland,
Fife. KY3 0EN

TITLE
(B 2/2) Flat Plot Plan A2

FOR INFORMATION

SCALE @ A2	PRINTED DATE	DRAWN	CHECKED
	JUNE 2019	JM	DJM

No. 314 - FLATS CT 207 A (B 2/2)

REV. A

LEWIS HOUSE, UNIT 213, EAST WAY
HILLEND IND EST, DUNFERMLINE
FIFE, KY11 9JF, SCOTLAND

t - 01383 737101
e - info@acarchitects.biz
w - www.acarchitects.biz