

The Development registered under Title ABN110974 and Plots 101 to 113 (inclusive) within the unique DPA identifiers: ABN110974, ABN110974 1ST FLOOR and ABN110974 2ND FLOOR have been DPA approved by:  
*I MacLaren - 29th January 2018*  
 Iain MacLaren (DPA Officer)

**DPA unique identifier: ABN110974**

Site Location Plan  
 Scale 1:1000

- LEGEND:**
- Plot Boundaries
  - Service Strip
  - Shared Car Parking at Self-Contained Flats
  - Shared Driveways
  - Shared Ownership of Plots 215, 216, 217, 226 and 227


Rev:	Details:	Date:
E	Plots 101-113 added	23.01.2018
D	Blocks 2 & 4 added	07.08.2017
C	Boundaries amended between plots 1202, 1203, 1405, 1406, 1408, 1409 and 816-817	26.09.2016
B	Blocks 7 & 8 added	14.07.2016
A	Blocks 12 & 14 added	25.01.2016

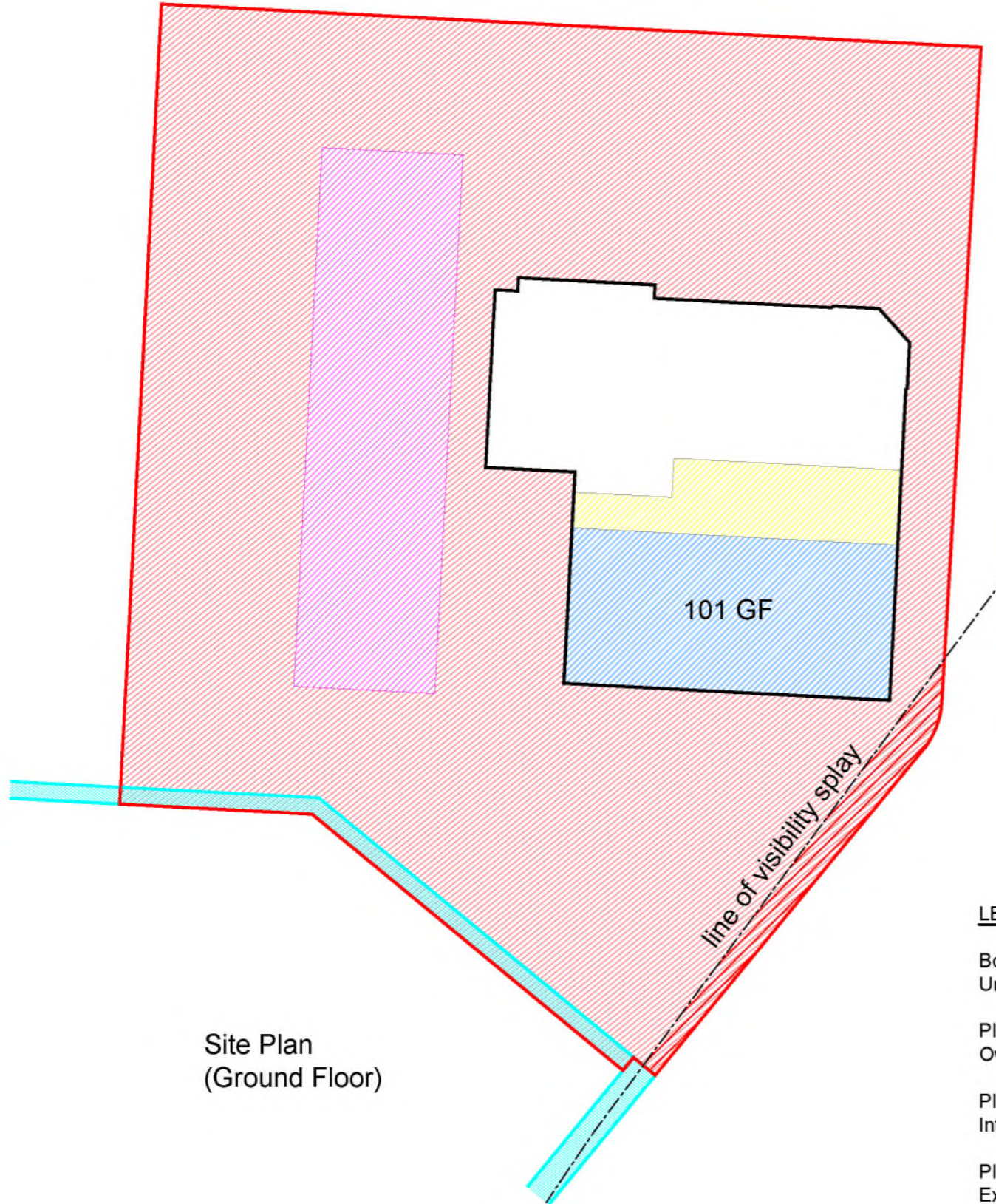
Project Title:	Residential Development at Dubford, Bridge of Don, Aberdeen
Project Number:	1513
Issued For:	LAND REGISTRY
Drawing Title:	Development Plan Approval Site Plan
Drawn By:	J.V.V.
Date:	Feb 2015
Scale:	1:500 + 1:1000
Rev:	E
Drawing No:	DPA_1

**SCOTIA**







Scotia Homes Limited  
 Balmacassie, Ellon,  
 Aberdeenshire,  
 AB41 8QR  
 Tel: 01358 722441  
 Fax: 01358 723499  
 Email: info@scotia-homes.co.uk  
 www.scotia-homes.co.uk

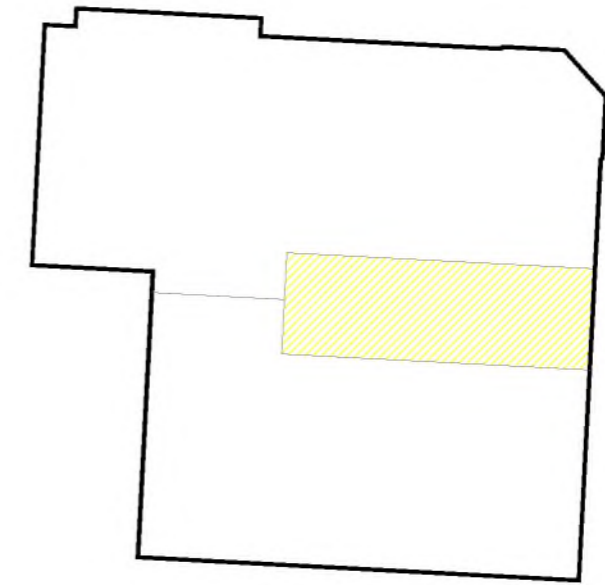
DPA unique identifiers: ABN110974, ABN110974 1ST FLOOR  
and ABN110974 2ND FLOOR

 <b>SCOTIA HOMES</b> Balmacassie, Ellon, AB41 8QR Tel: 01358 722441 Kingsmuir, Forfar, DD8 2NS Tel: 01307 466161 <a href="http://www.scotia-homes.co.uk">www.scotia-homes.co.uk</a>	Project Title	Dubford, Bridge of Don, Aberdeen		
	Drawing Title	Plot Nos 101-106 (Ground Floor) Title Deed Plans		
	Issued For	LAND REGISTRY		
	Project No	Drawing No	Rev	
	1513	101-106_01		
<b>Disclaimer:</b> Do not scale from this drawing. All contractors must work only to figured dimensions shown all of which are to be checked on site. Copyright of this drawing subsists with Scotia Homes (Holdings) Ltd.	Drawn By	J.M.W.	Checked By	
	Date	23.01.2018	Scale	1:200 at A3

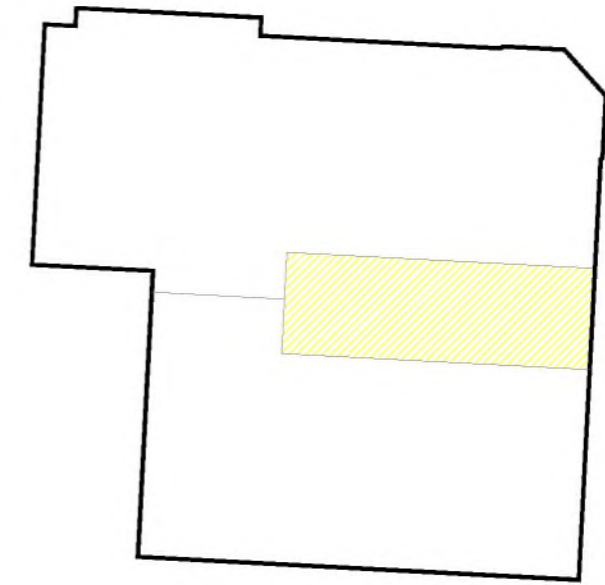


**LEGEND:**

- Boundary of Cadastral Unit of Plots 101-106 
- Plot 101 Internal Ownership 
- Plots 101-106 Shared Internal Ownership 
- Plots 101-106 Shared External Ownership 
- Shared Ownership Car Parking (101-106) 
- Service Strip 




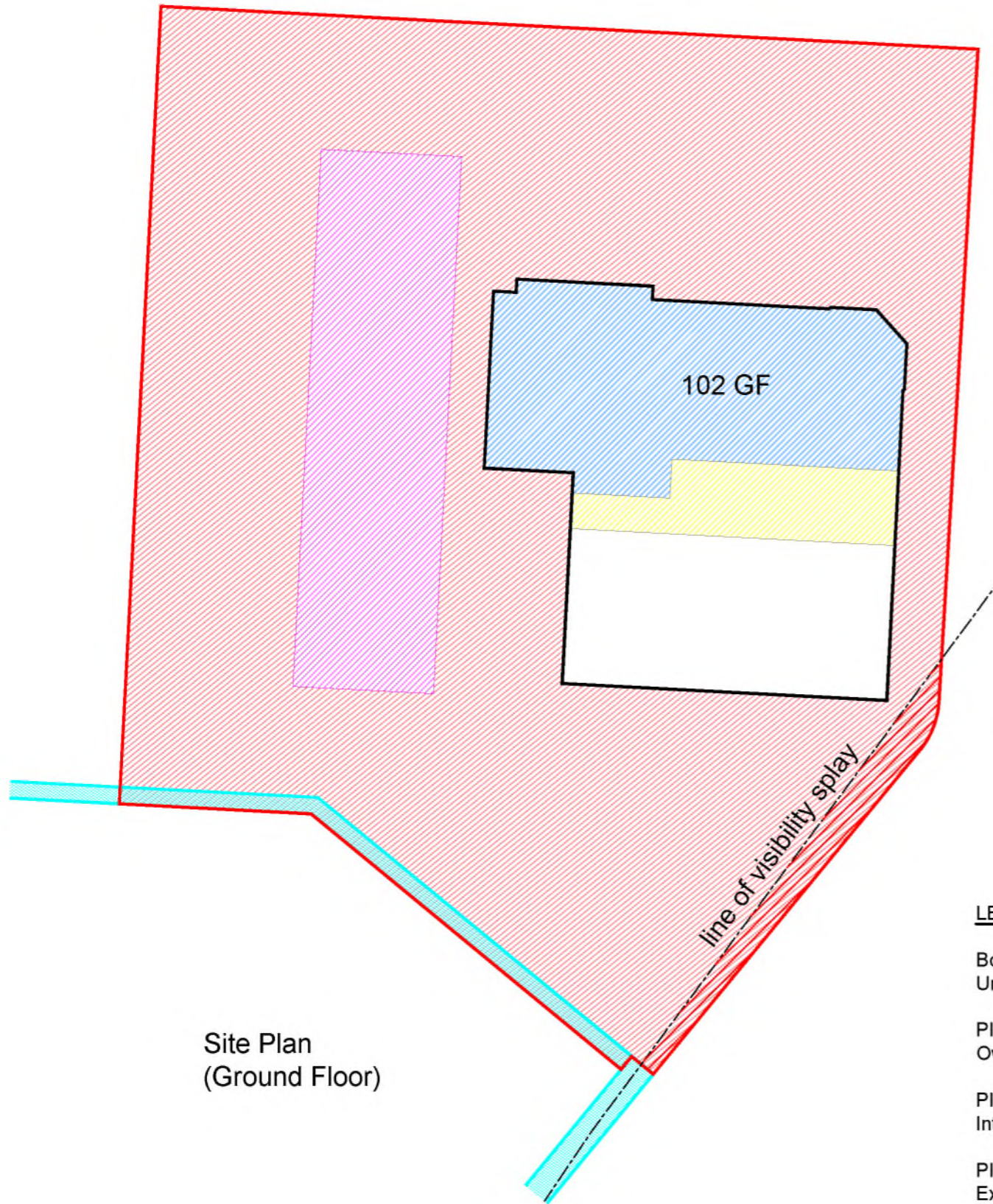
Second Floor



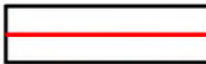





First Floor

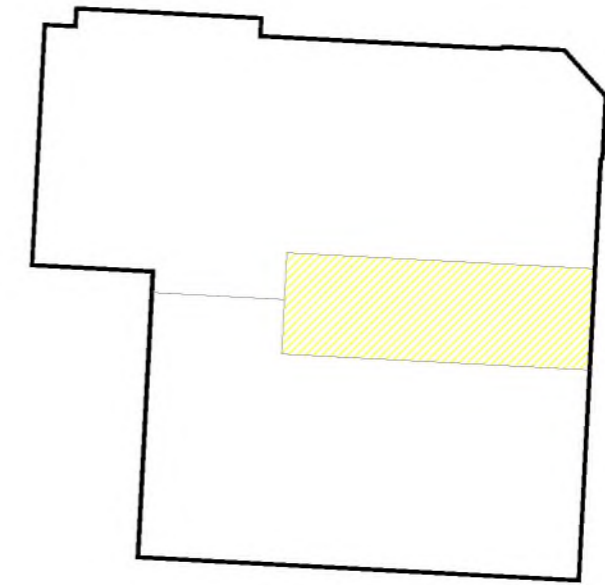
DPA unique identifiers: ABN110974, ABN110974 1ST FLOOR  
and ABN110974 2ND FLOOR

 <b>SCOTIA HOMES</b> Balmacassie, Ellon, AB41 8QR Tel: 01358 722441 Kingsmuir, Forfar, DD8 2NS Tel: 01307 466161 <a href="http://www.scotia-homes.co.uk">www.scotia-homes.co.uk</a>	Project Title	Dubford, Bridge of Don, Aberdeen		
	Drawing Title	Plot Nos 101-106 (Ground Floor) Title Deed Plans		
	Issued For	LAND REGISTRY		
	Project No	Drawing No	Rev	
	1513	101-106_02		
<b>Disclaimer:</b> Do not scale from this drawing. All contractors must work only to figured dimensions shown all of which are to be checked on site. Copyright of this drawing subsists with Scotia Homes (Holdings) Ltd.	Drawn By	J.M.W.	Checked By	
	Date	23.01.2018	Scale	1:200 at A3

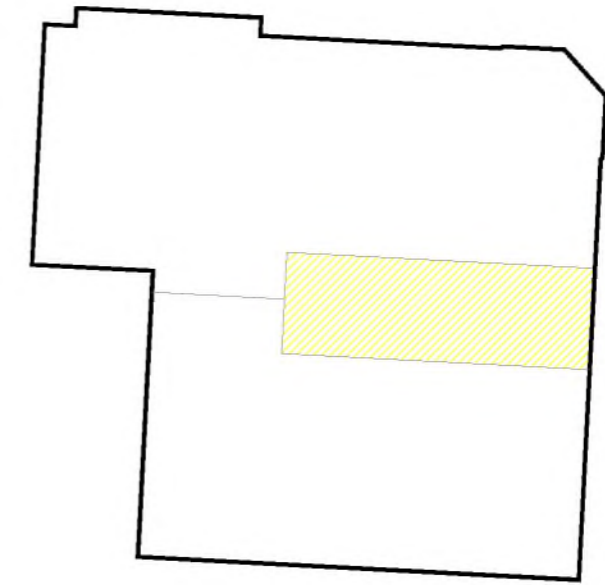


**LEGEND:**

- Boundary of Cadastral Unit of Plots 101-106 
- Plot 102 Internal Ownership 
- Plots 101-106 Shared Internal Ownership 
- Plots 101-106 Shared External Ownership 
- Shared Ownership Car Parking (101-106) 
- Service Strip 




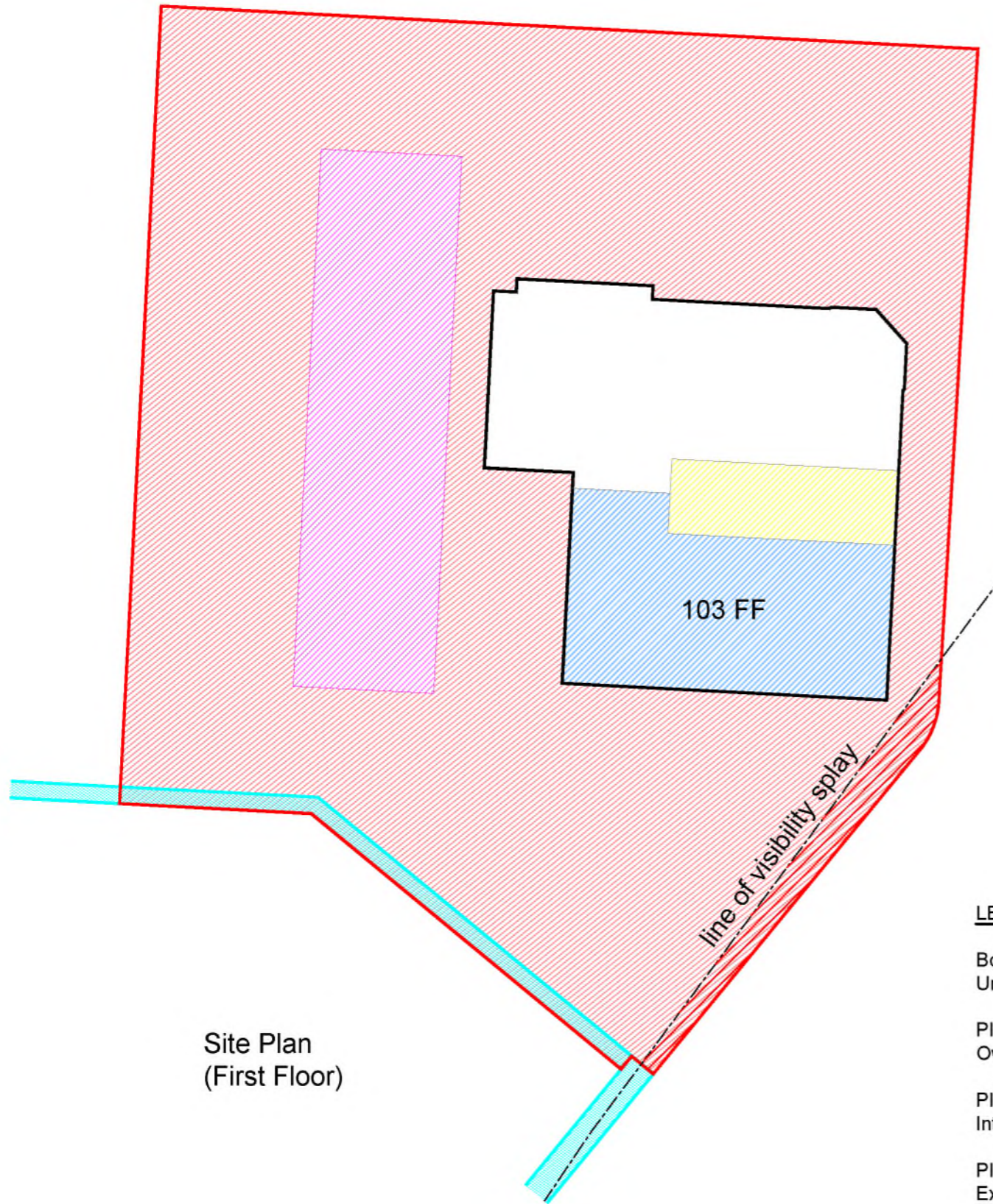
Second Floor



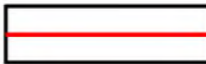





First Floor

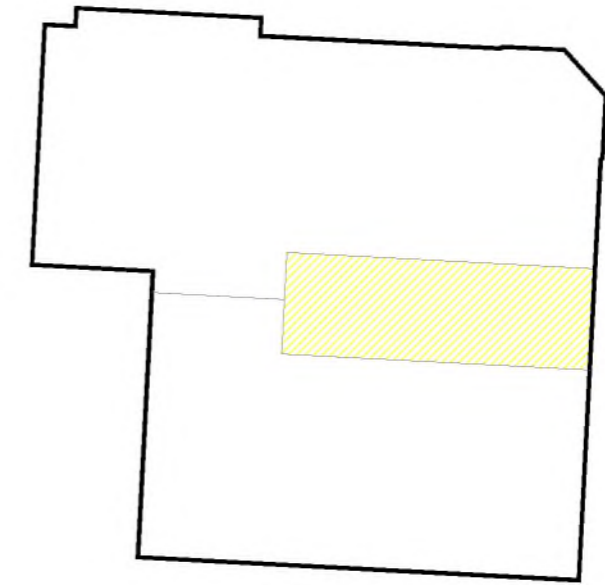
DPA unique identifiers: ABN110974, ABN110974 1ST FLOOR  
and ABN110974 2ND FLOOR.

 <b>SCOTIA HOMES</b> Balmacassie, Ellon, AB41 8QR Tel: 01358 722441 Kingsmuir, Forfar, DD8 2NS Tel: 01307 466161 <a href="http://www.scotia-homes.co.uk">www.scotia-homes.co.uk</a>	Project Title	Dubford, Bridge of Don, Aberdeen		
	Drawing Title	Plot Nos 101-106 (First Floor) Title Deed Plans		
	Issued For	LAND REGISTRY		
	Project No	Drawing No	Rev	
	1513	101-106_03		
<b>Disclaimer:</b> Do not scale from this drawing. All contractors must work only to figured dimensions shown all of which are to be checked on site. Copyright of this drawing subsists with Scotia Homes (Holdings) Ltd.	Drawn By	J.M.W.	Checked By	
	Date	23.01.2018	Scale	1:200 at A3

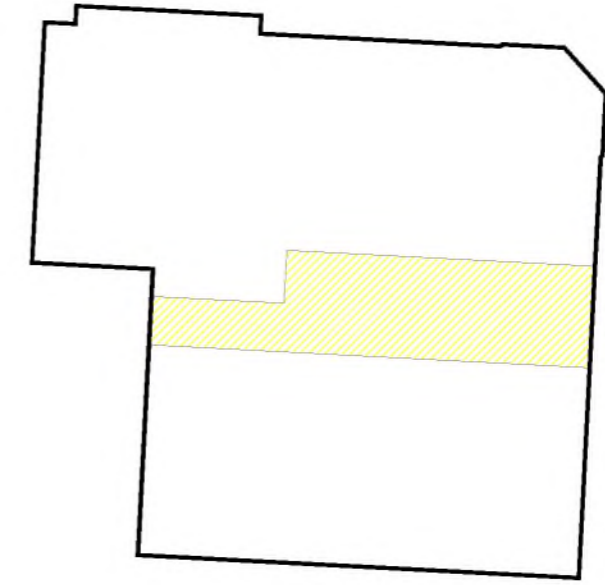


**LEGEND:**

- Boundary of Cadastral Unit of Plots 101-106 
- Plot 103 Internal Ownership 
- Plots 101-106 Shared Internal Ownership 
- Plots 101-106 Shared External Ownership 
- Shared Ownership Car Parking (101-106) 
- Service Strip 




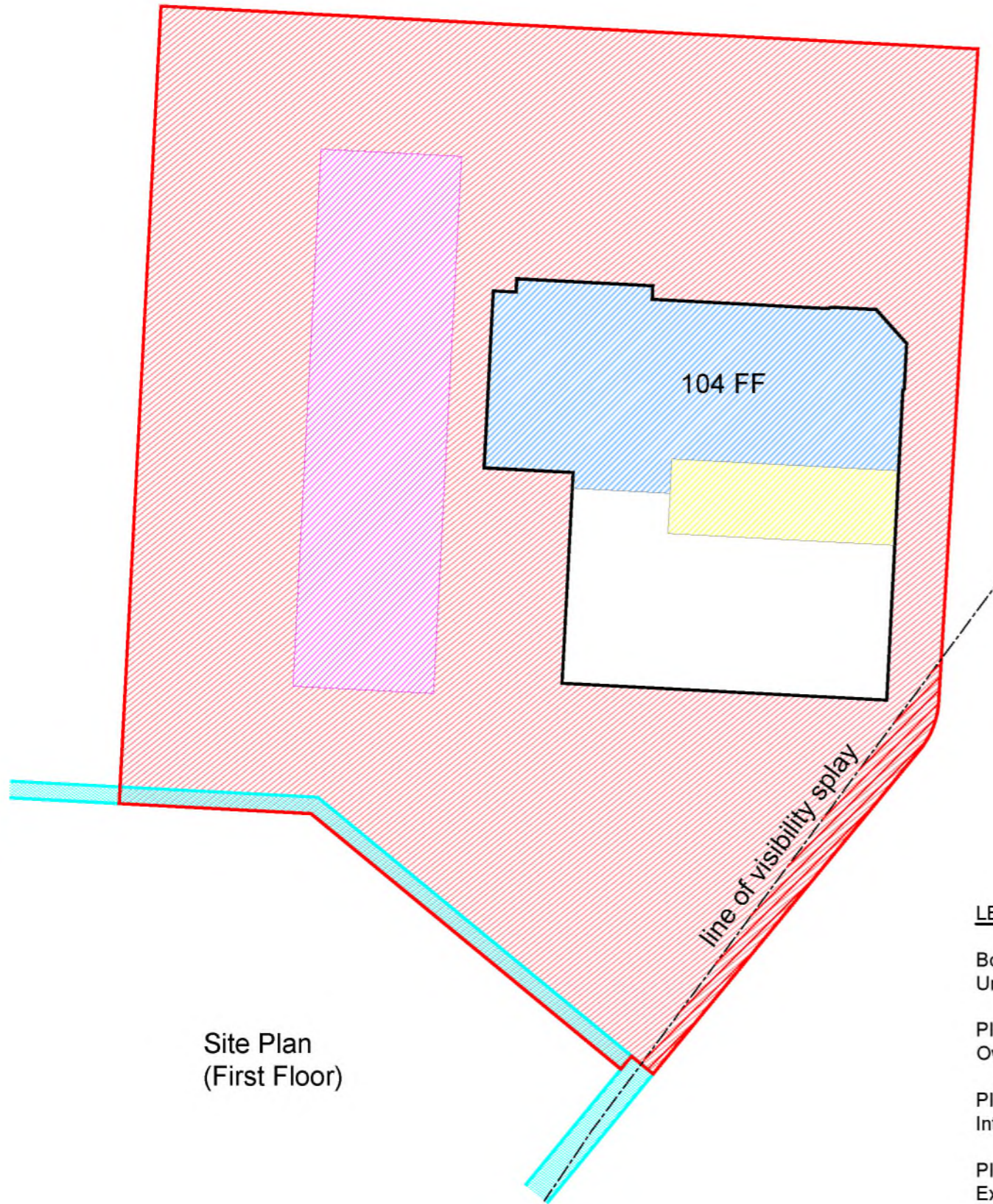
Second Floor



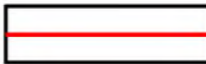





Ground Floor

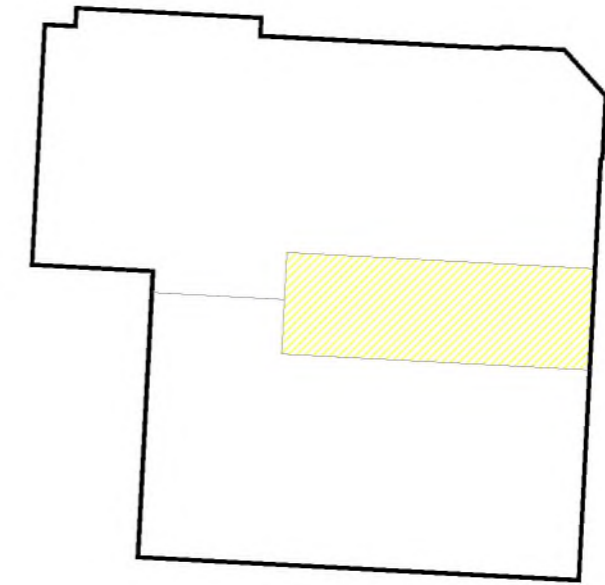
DPA unique identifiers: ABN110974, ABN110974 1ST FLOOR  
and ABN110974 2ND FLOOR

 <b>SCOTIA HOMES</b> Balmacassie, Ellon, AB41 8QR Tel: 01358 722441 Kingsmuir, Forfar, DD8 2NS Tel: 01307 466161 <a href="http://www.scotia-homes.co.uk">www.scotia-homes.co.uk</a>	Project Title	Dubford, Bridge of Don, Aberdeen		
	Drawing Title	Plot Nos 101-106 (First Floor) Title Deed Plans		
	Issued For	LAND REGISTRY		
	Project No	Drawing No	Rev	
	1513	101-106_04		
<b>Disclaimer:</b> Do not scale from this drawing. All contractors must work only to figured dimensions shown all of which are to be checked on site. Copyright of this drawing subsists with Scotia Homes (Holdings) Ltd.	Drawn By	J.M.W.	Checked By	
	Date	23.01.2018	Scale	1:200 at A3

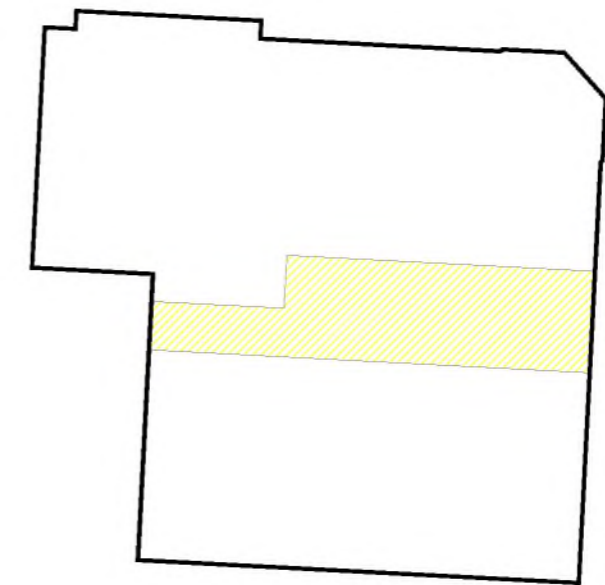


**LEGEND:**

- Boundary of Cadastral Unit of Plots 101-106 
- Plot 104 Internal Ownership 
- Plots 101-106 Shared Internal Ownership 
- Plots 101-106 Shared External Ownership 
- Shared Ownership Car Parking (101-106) 
- Service Strip 




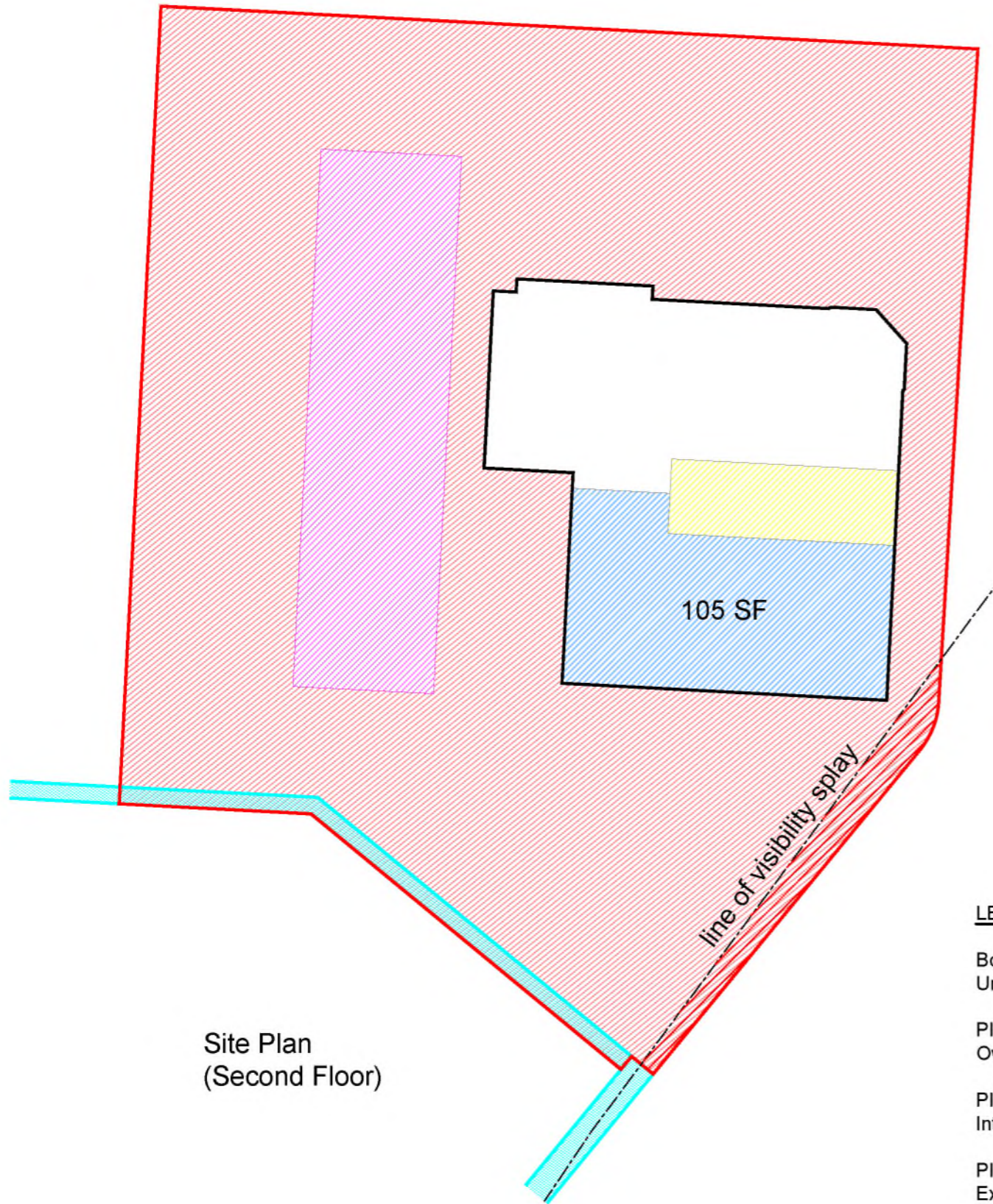
Second Floor



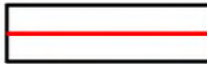





Ground Floor

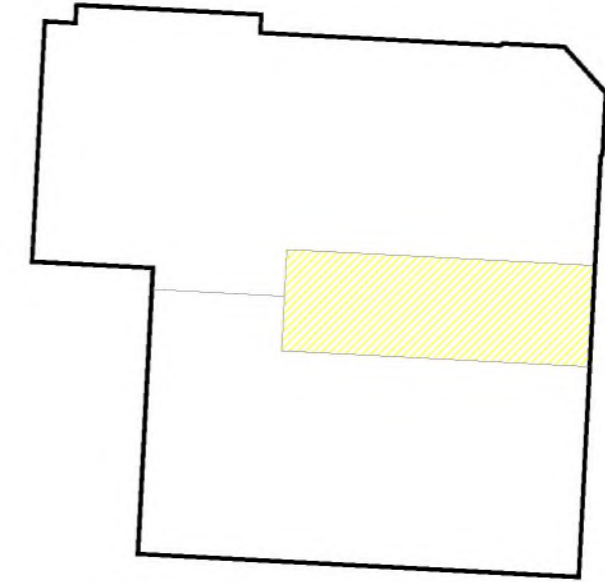
DPA unique identifiers: ABN110974, ABN110974 1ST FLOOR  
and ABN110974 2ND FLOOR

 <b>SCOTIA HOMES</b> Balmacassie, Ellon, AB41 8QR Tel: 01358 722441 Kingsmuir, Forfar, DD8 2NS Tel: 01307 466161 <a href="http://www.scotia-homes.co.uk">www.scotia-homes.co.uk</a>	Project Title	Dubford, Bridge of Don, Aberdeen		
	Drawing Title	Plot Nos 101-106 (Second Floor) Title Deed Plans		
	Issued For	LAND REGISTRY		
	Project No	Drawing No	Rev	
	1513	101-106_05		
<b>Disclaimer:</b> Do not scale from this drawing. All contractors must work only to figured dimensions shown all of which are to be checked on site. Copyright of this drawing subsists with Scotia Homes (Holdings) Ltd.	Drawn By	J.M.W.	Checked By	
	Date	23.01.2018	Scale	1:200 at A3

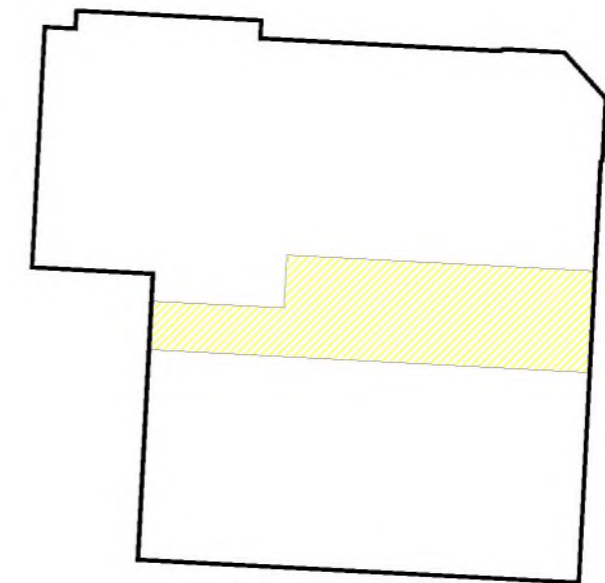


**LEGEND:**

- Boundary of Cadastral Unit of Plots 101-106 
- Plot 105 Internal Ownership 
- Plots 101-106 Shared Internal Ownership 
- Plots 101-106 Shared External Ownership 
- Shared Ownership Car Parking (101-106) 
- Service Strip 




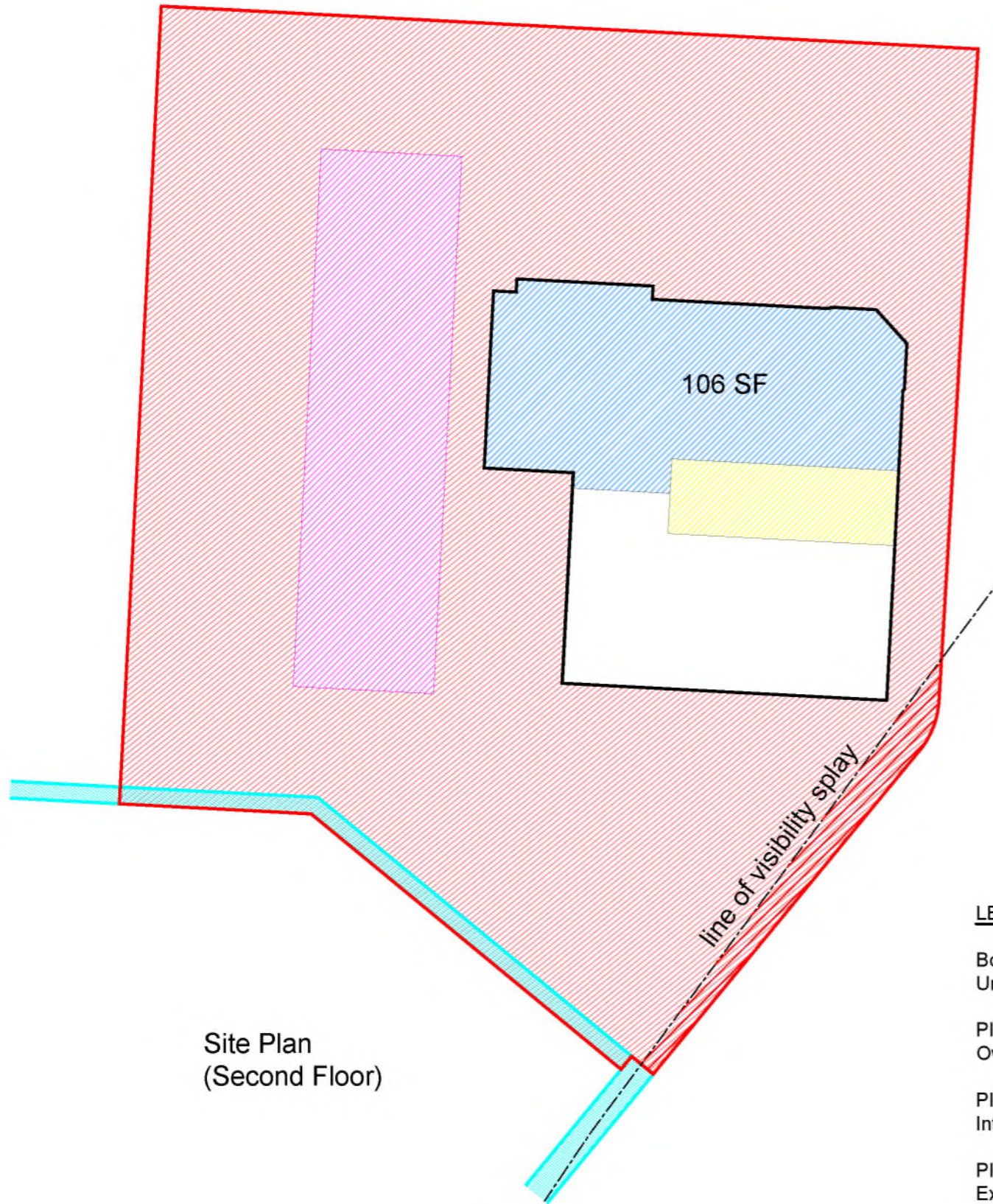
First Floor









Ground Floor

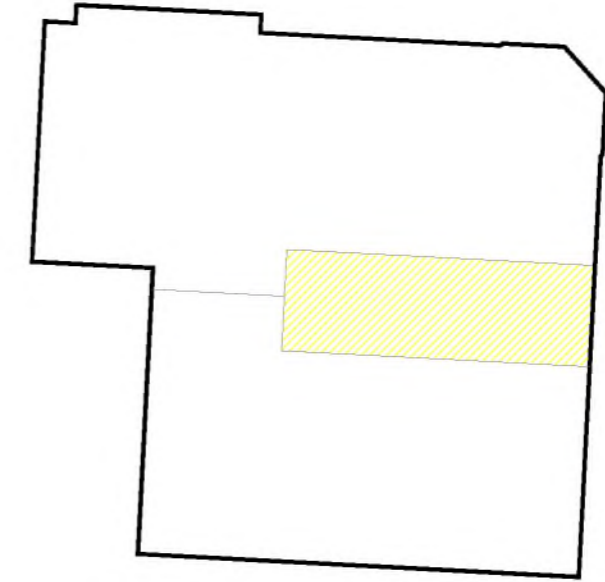
DPA unique identifiers: ABN110974, ABN110974 1ST FLOOR  
and ABN110974 2ND FLOOR

 <b>SCOTIA HOMES</b> Balmacassie, Ellon, AB41 8QR Tel: 01358 722441 Kingsmuir, Forfar, DD8 2NS Tel: 01307 466161 <a href="http://www.scotia-homes.co.uk">www.scotia-homes.co.uk</a>	Project Title	Dubford, Bridge of Don, Aberdeen		
	Drawing Title	Plot Nos 101-106 (Second Floor) Title Deed Plans		
	Issued For	LAND REGISTRY		
	Project No	Drawing No	Rev	
	1513	101-106_06		
<b>Disclaimer:</b> Do not scale from this drawing. All contractors must work only to figured dimensions shown all of which are to be checked on site. Copyright of this drawing subsists with Scotia Homes (Holdings) Ltd.	Drawn By	J.M.W.	Checked By	
	Date	23.01.2018	Scale	1:200 at A3

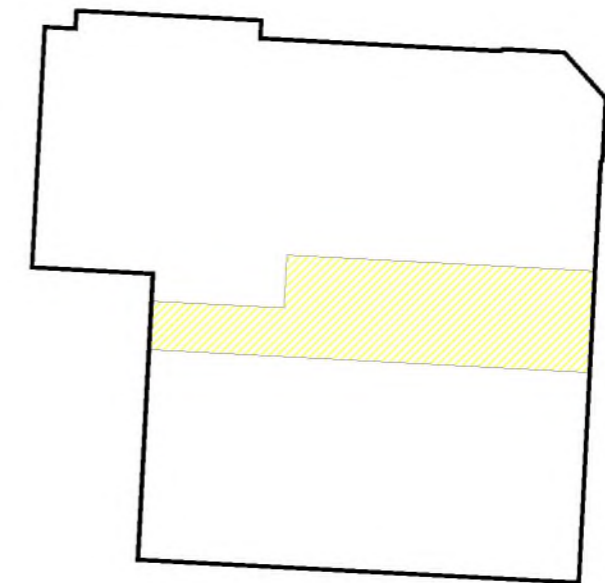


**LEGEND:**

- Boundary of Cadastral Unit of Plots 101-106 
- Plot 106 Internal Ownership 
- Plots 101-106 Shared Internal Ownership 
- Plots 101-106 Shared External Ownership 
- Shared Ownership Car Parking (101-106) 
- Service Strip 



First Floor



Ground Floor